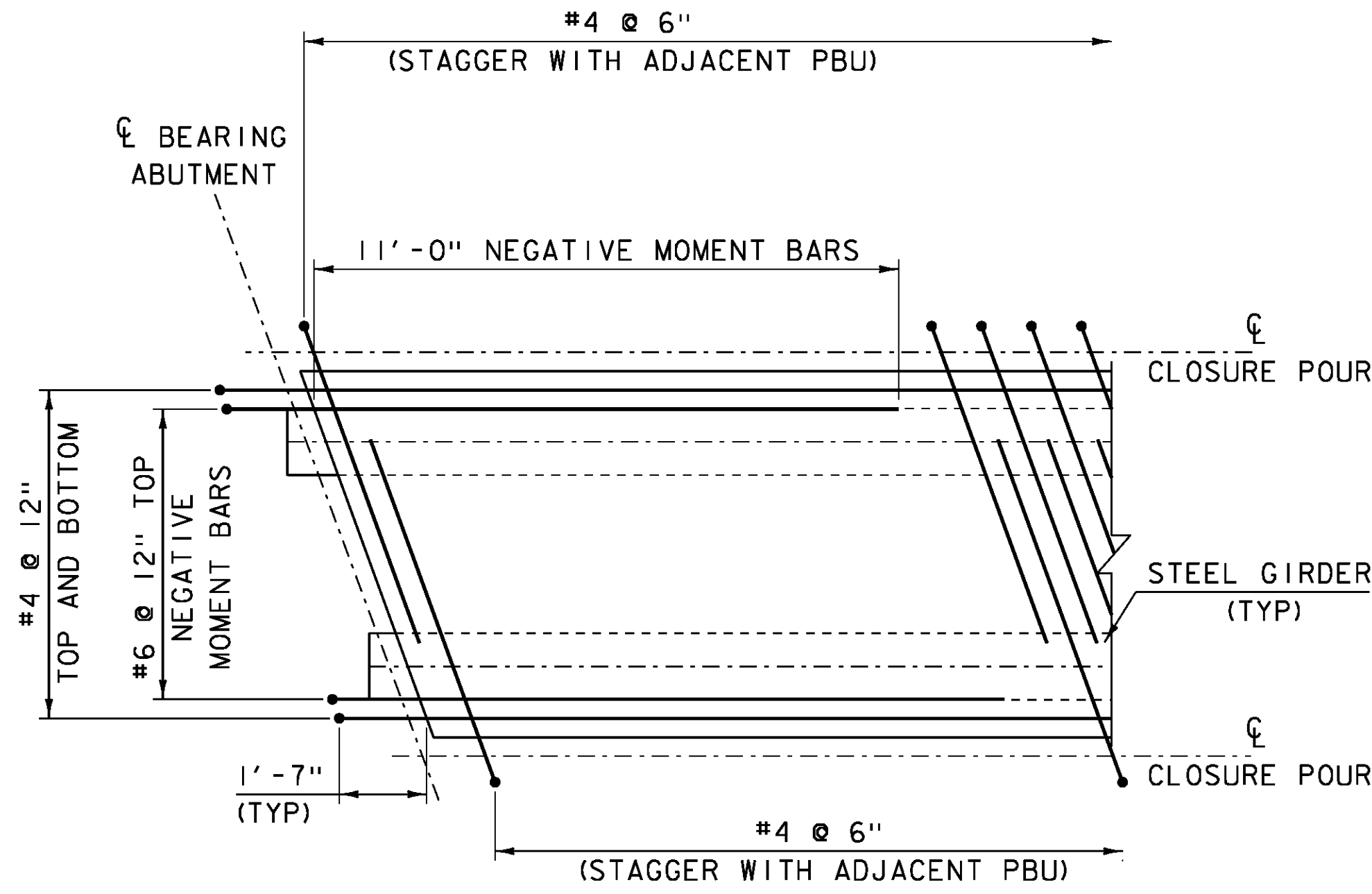


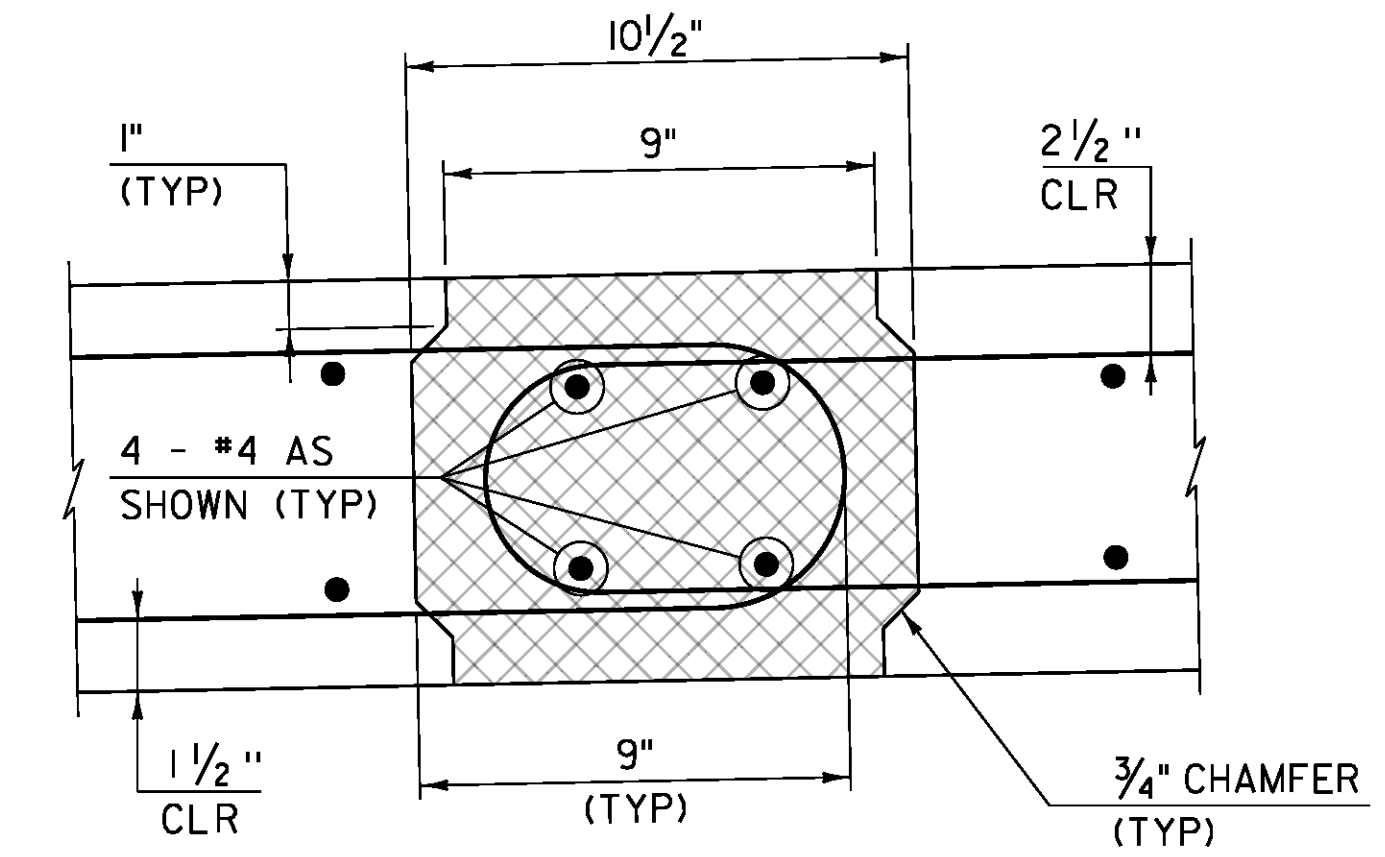
**PBU 1 & 3**

SCALE  $\frac{3}{8}$ " = 1'-0"



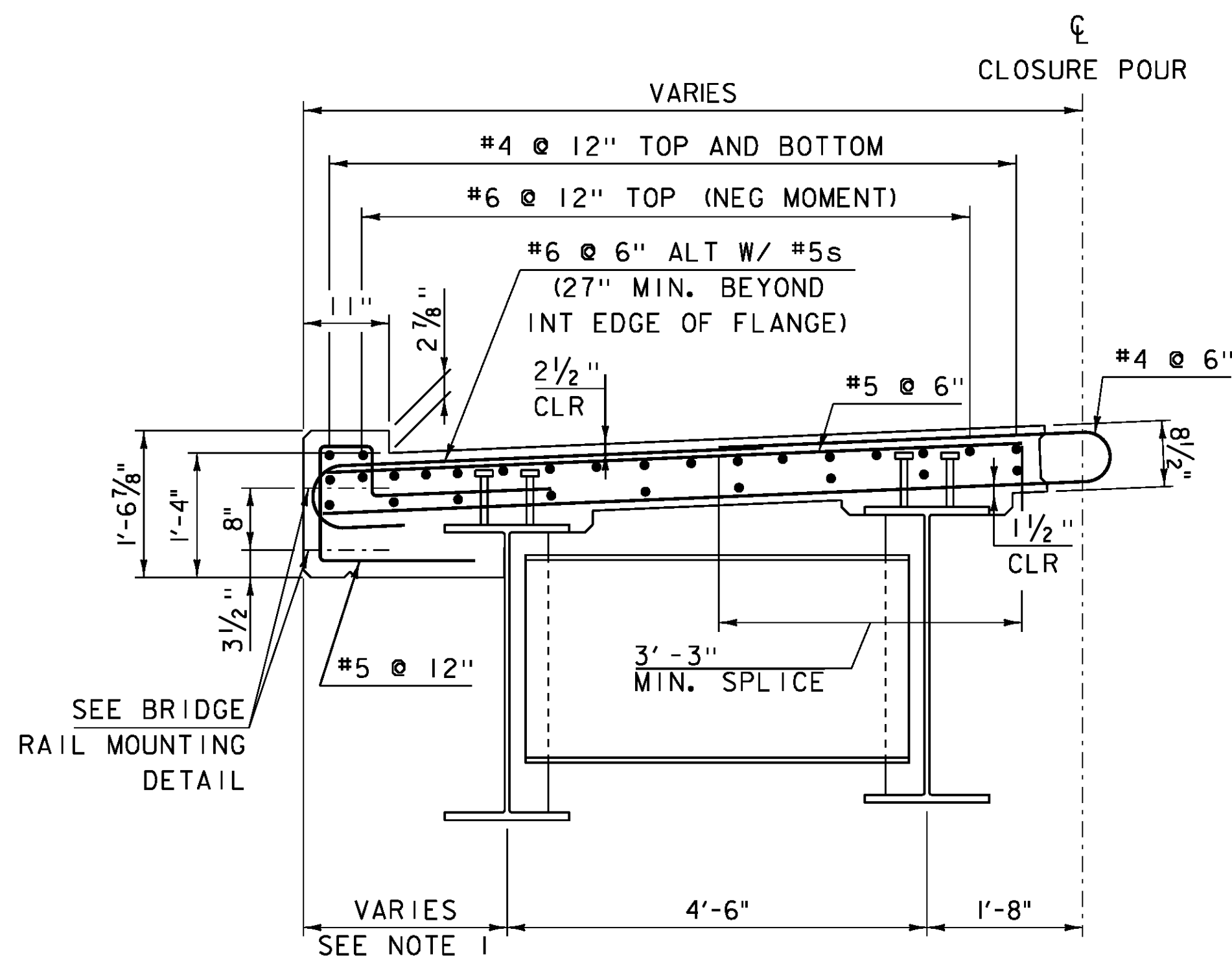
**PBU 2**

SCALE  $\frac{3}{8}$ " = 1'-0"



**CLOSURE POUR DETAIL SECTION**

N.T.S.

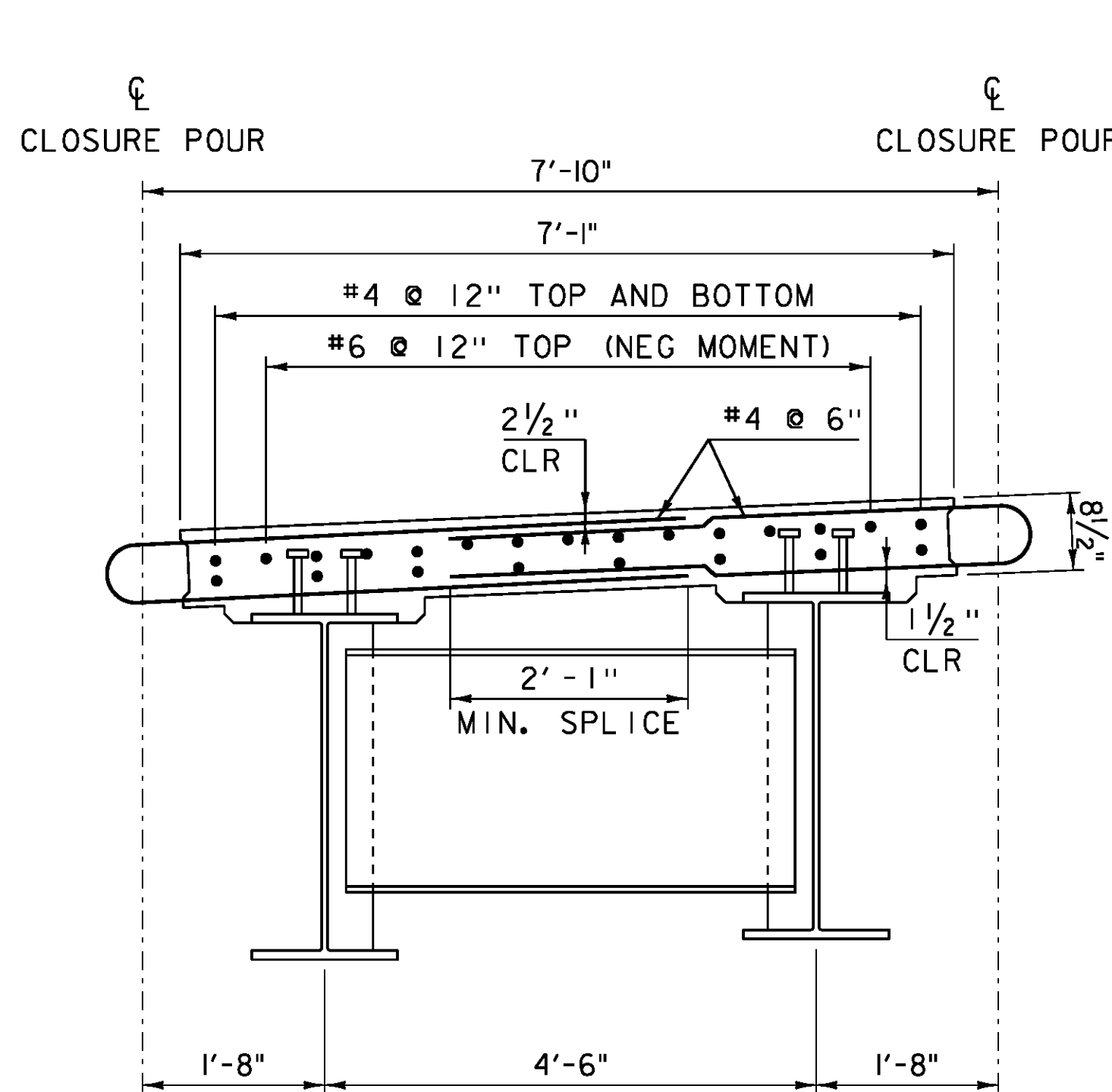


**PBU 1 & 3**

SCALE  $\frac{3}{4}$ " = 1'-0"

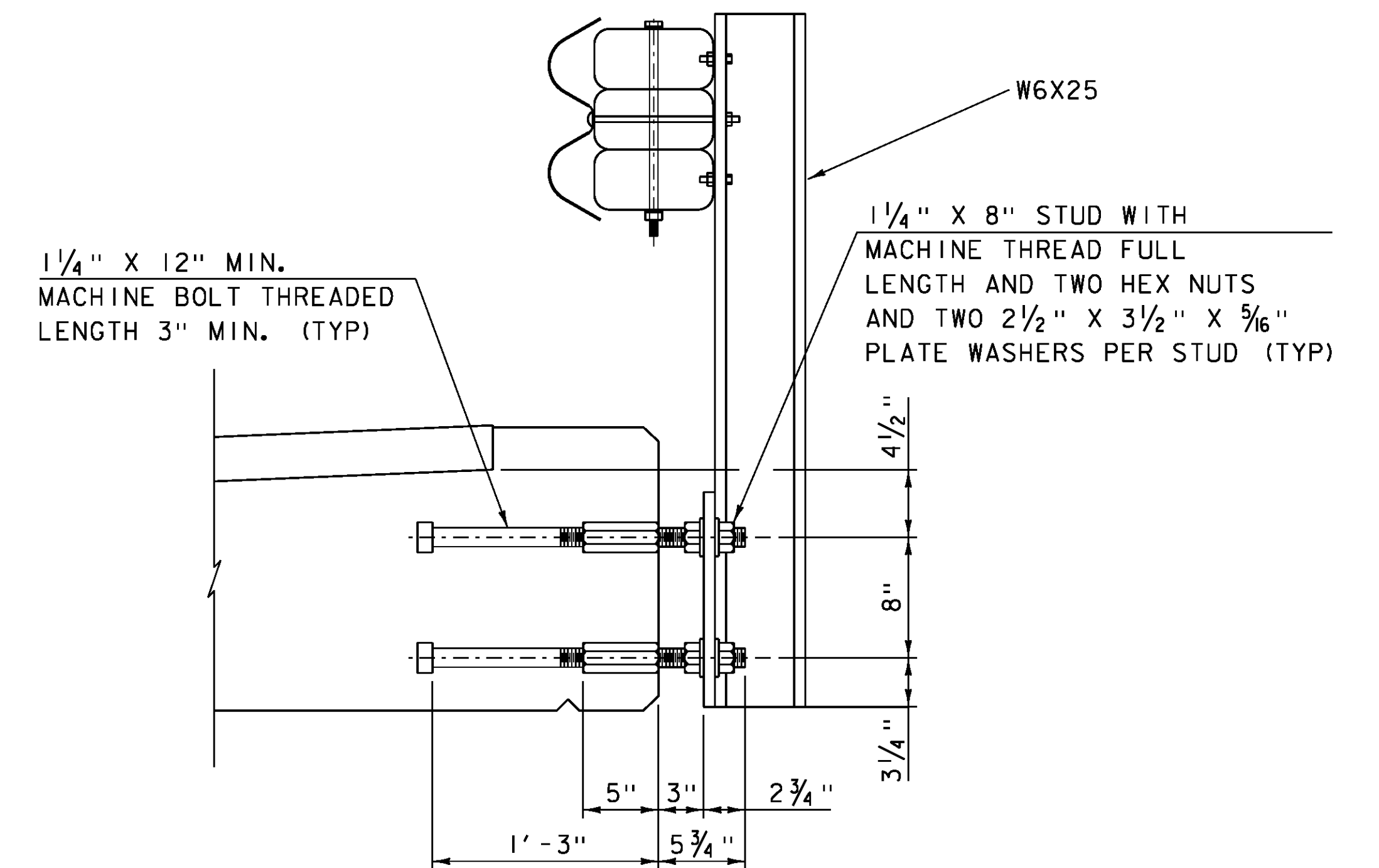
NOTE:

1. PBU 1, 2'-2 $\frac{3}{16}$ " MIN, 3'-4 $\frac{3}{8}$ " MAX  
PBU 3, 1'-8 $\frac{1}{2}$ " MIN, 2'-1 $\frac{1}{16}$ " MAX
2. PBU 1 SHOWN, PBU 3 SIMILAR.



**PBU 2**

SCALE  $\frac{3}{4}$ " = 1'-0"



**BRIDGE RAIL MOUNTING DETAIL**

SCALE  $\frac{1}{2}$ " = 1'-0"

NOTE:

SEE STANDARD S-367A FOR MORE DETAILS

NOTE:

- NF = NEAR FACE
  - FF = FAR FACE
  - EF = EACH FACE
  - ▲ = CUT TO FIT IN FIELD
- 3" CLEAR, UNLESS OTHERWISE SPECIFIED ON THE PLANS.  
2'-2" BAR LAP UNLESS OTHERWISE SPECIFIED ON THE PLANS.

PROJECT NAME: CRAFTSBURY	PLOT DATE: 14-OCT-2015
PROJECT NUMBER: BO 1449(34)	DRAWN BY: S. COLEY
FILE NAME: sl3j100sup.dgn	CHECKED BY: W. LAMMER
PROJECT LEADER: R. YOUNG	SHEET 18 OF 42
DESIGNED BY: W. LAMMER	
PBU TYPICAL SECTIONS	