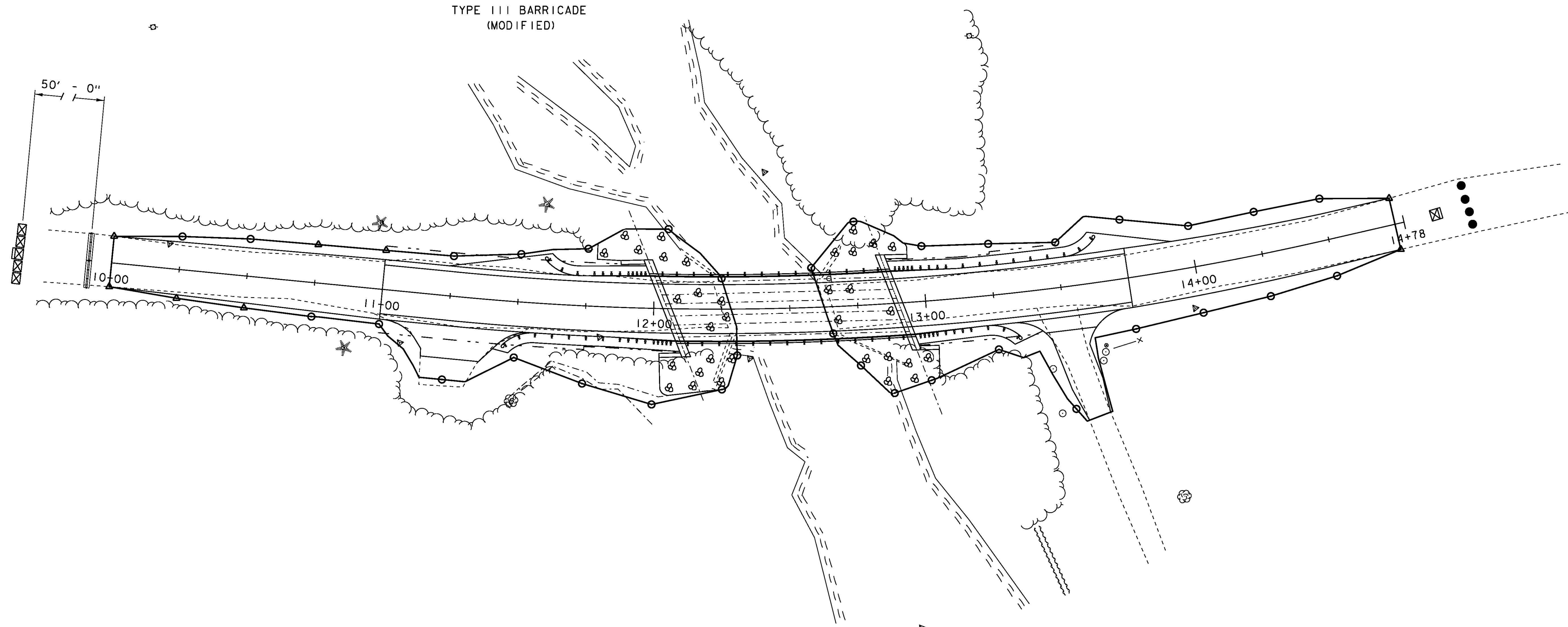
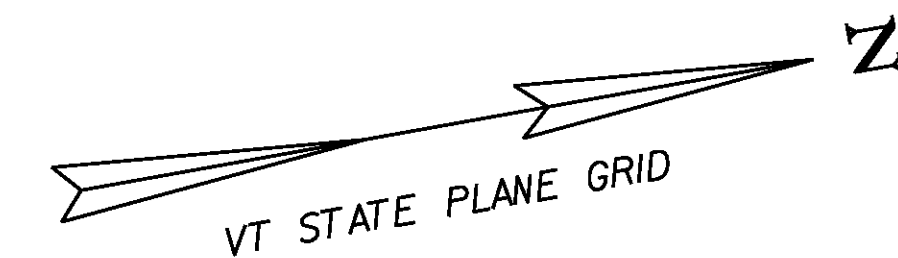
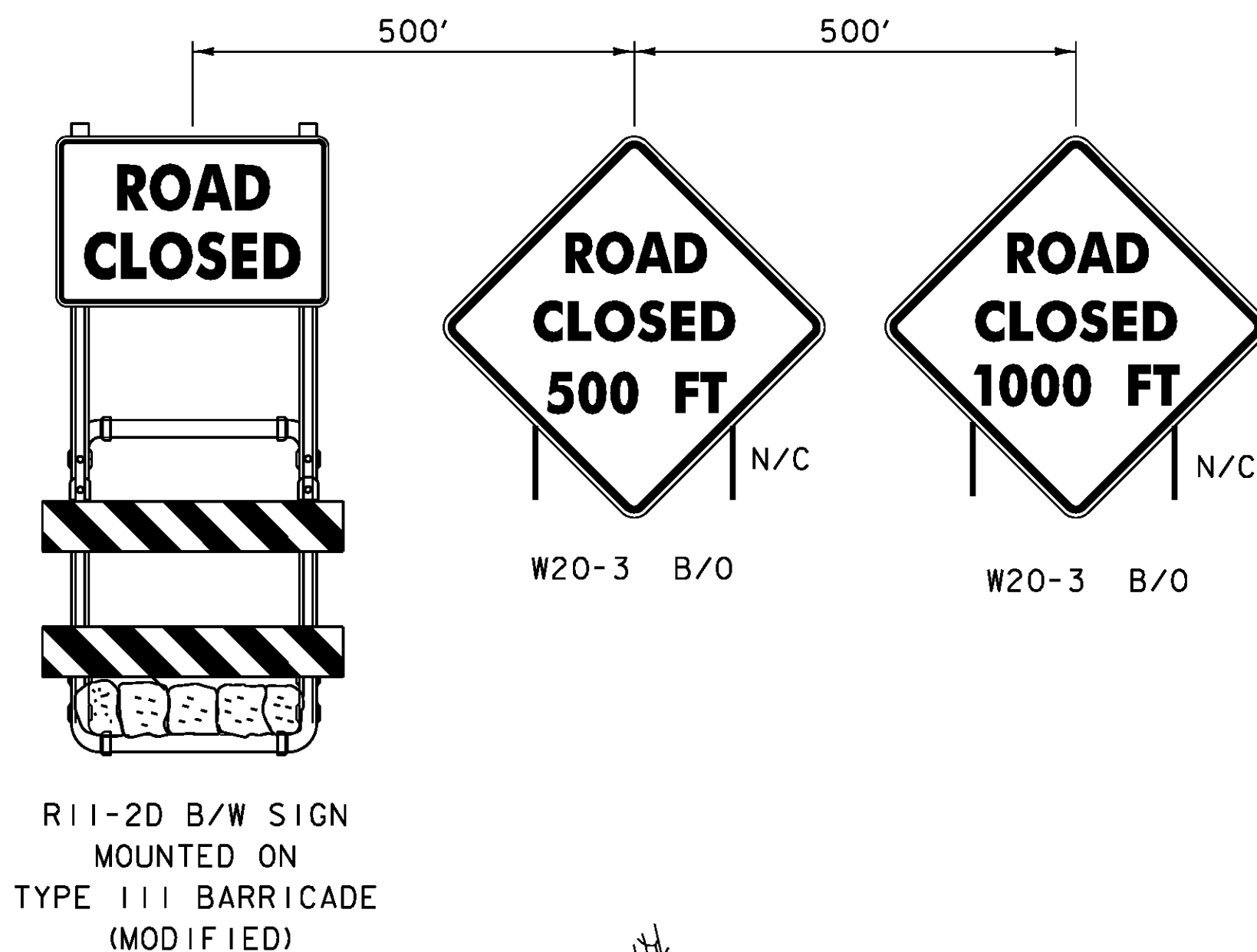


NOTES:

1. THE CONTRACTOR SHALL BE RESPONSIBLE FOR SIGNS AND BARRICADES SHOWN ON THIS SHEET. THEY WILL BE CONSIDERED INCIDENTAL TO ITEM 900.645, "SPECIAL PROVISION (TRAFFIC CONTROL, ALL-INCLUSIVE)".
2. TEMPORARY TRAFFIC BARRIER AT EACH END OF THE PROJECT SHALL BE CONSIDERED INCIDENTAL TO PAY ITEM 900.645, "SPECIAL PROVISION (TRAFFIC CONTROL, ALL-INCLUSIVE)" AND FURNISHED IN ACCORDANCE WITH SECTION 621.
3. SEE STANDARD T-10 FOR TYPICAL APPROACH SIGNING.



LEGEND	
N/C	- NEW/CONSTRUCTION ONLY
B/O	- BLACK/ORANGE
B/W	- BLACK/WHITE
●	- RETROREFLECTIVE PLASTIC DRUM
⊠	- TYPE III BARRICADE
⊠	- TYPE III BARRICADE (MOD.)
▬	- TEMPORARY TRAFFIC BARRIER

TRAFFIC LAYOUT SHEET

SCALE 1" = 20'-0"
20 0 20

PROJECT NAME:	CRAFTSBURY	PLOT DATE:	14-OCT-2015
PROJECT NUMBER:	BO 1449(34)	DRAWN BY:	W. LAMMER
FILE NAME:	s13j100traff.dgn	CHECKED BY:	J. SALVATORI
PROJECT LEADER:	R. YOUNG	TRAFFIC LAYOUT SHEET	SHEET 16 OF 42
DESIGNED BY:	W. LAMMER		