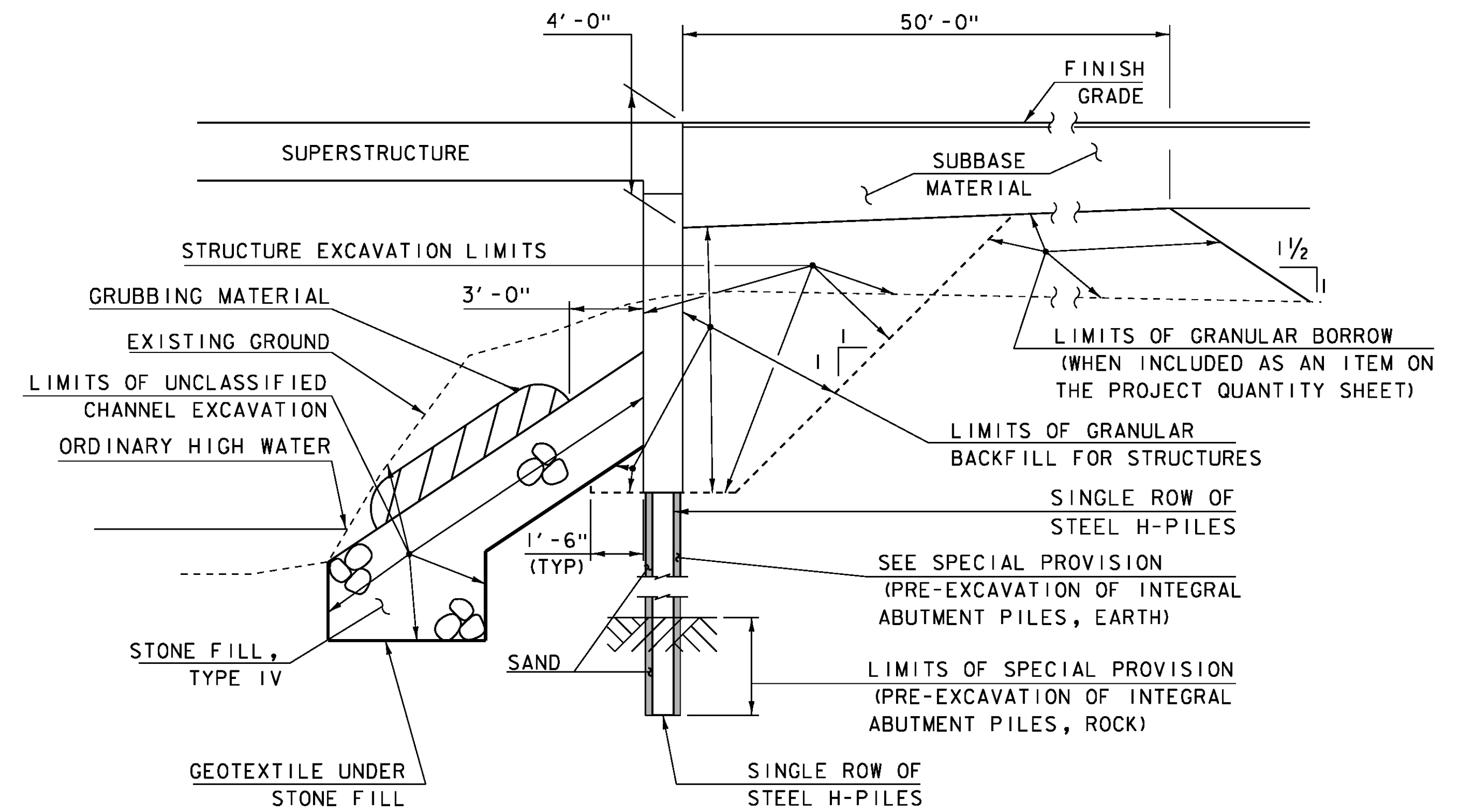


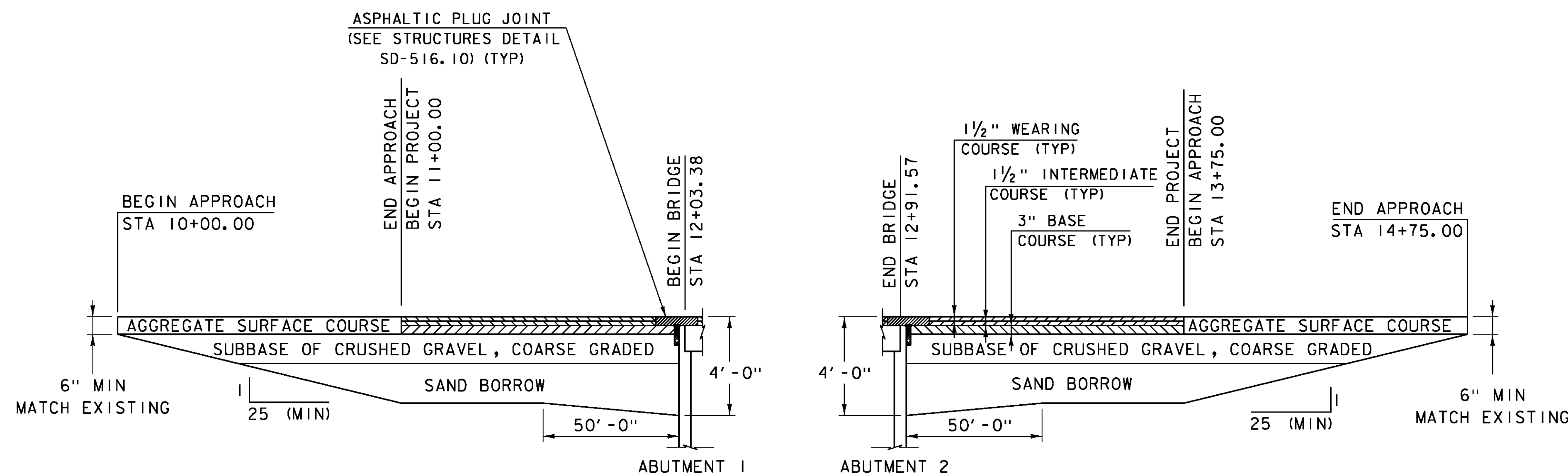
**TYPICAL INTEGRAL ABUTMENT 1 SECTION**  
NOT TO SCALE

NOTE. ACTUAL EXCAVATION SHALL BE DETERMINED BY THE CONTRACTOR. HOWEVER, ONLY THE EXCAVATION BETWEEN THE LIMITS SHOWN WILL BE PAID FOR UNDER ITEM 204.25 "STRUCTURE EXCAVATION".



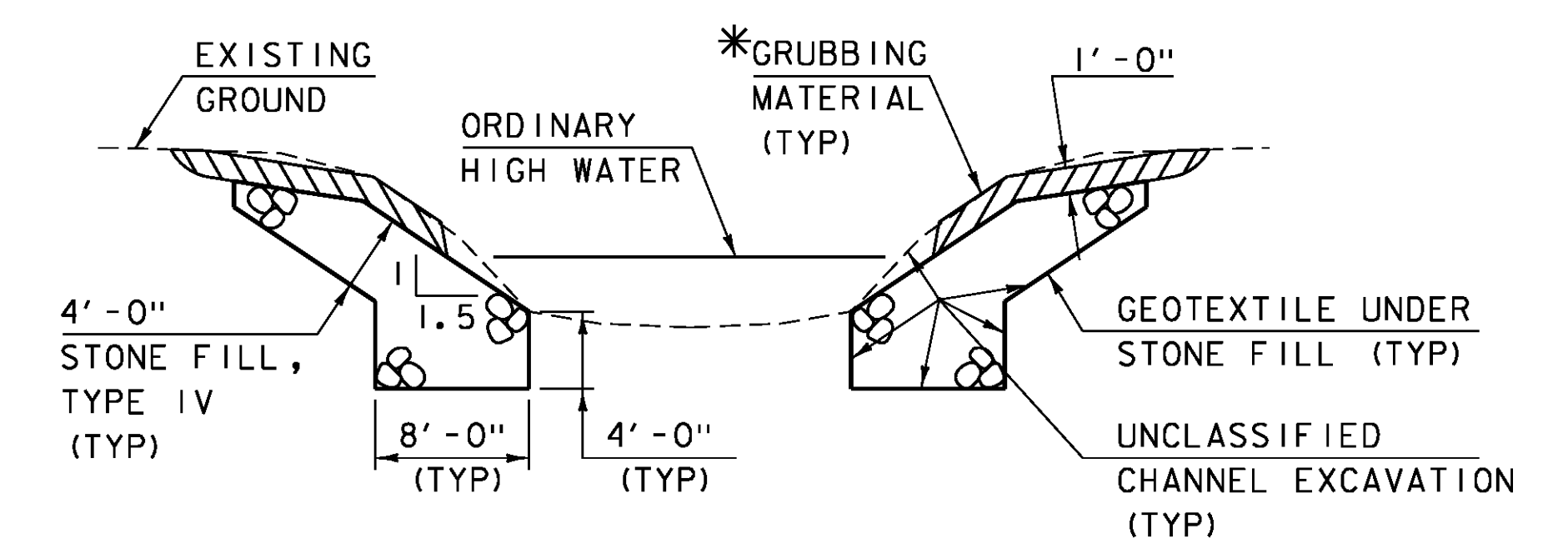
**TYPICAL INTEGRAL ABUTMENT 2 SECTION**  
NOT TO SCALE

ACTUAL LIMITS OF STRUCTURE EXCAVATION SHALL BE DETERMINED BY THE CONTRACTOR. HOWEVER, ONLY EXCAVATION BETWEEN THE LIMITS SHOWN WILL BE PAID FOR UNDER ITEM 204.25 "STRUCTURE EXCAVATION". EXCAVATION BY THE CONTRACTOR OUTSIDE OF THESE LIMITS WILL BE AT THE EXPENSE OF THE CONTRACTOR. PRE-EXCAVATION OF PILES REQUIRED AT ABUTMENT 2 ONLY.



**BEGIN PROJECT MATERIAL TRANSITION**  
NOT TO SCALE

**END PROJECT MATERIAL TRANSITION**  
NOT TO SCALE



**TYPICAL CHANNEL SECTION**  
(NOT TO SCALE)

\*GRUBBING MATERIAL SHALL BE PLACED ON THE STONE FILL IN THE AREA UNDER THE BRIDGE FROM JUST ABOVE OHW TO 3 FT HORIZONTALLY FROM THE FRONT FACE OF THE ABUTMENT. WHENEVER CHANNEL SLOPE INTERSECTS ROADWAY SUBBASE, GRUBBING MATERIAL SHALL BEGIN AT THE BOTTOM OF SUBBASE.

PROJECT NAME:	CRAFTSBURY
PROJECT NUMBER:	BO 1449(34)
FILE NAME:	s13j100+yp1cal.dgn
PROJECT LEADER:	R. YOUNG
DESIGNED BY:	W. LAMMER
TYPICAL SECTIONS 2	
PLOT DATE:	14-OCT-2015
DRAWN BY:	W. LAMMER
CHECKED BY:	S. COLEY
SHEET	4 OF 42