

GPS CONTROL POINTS

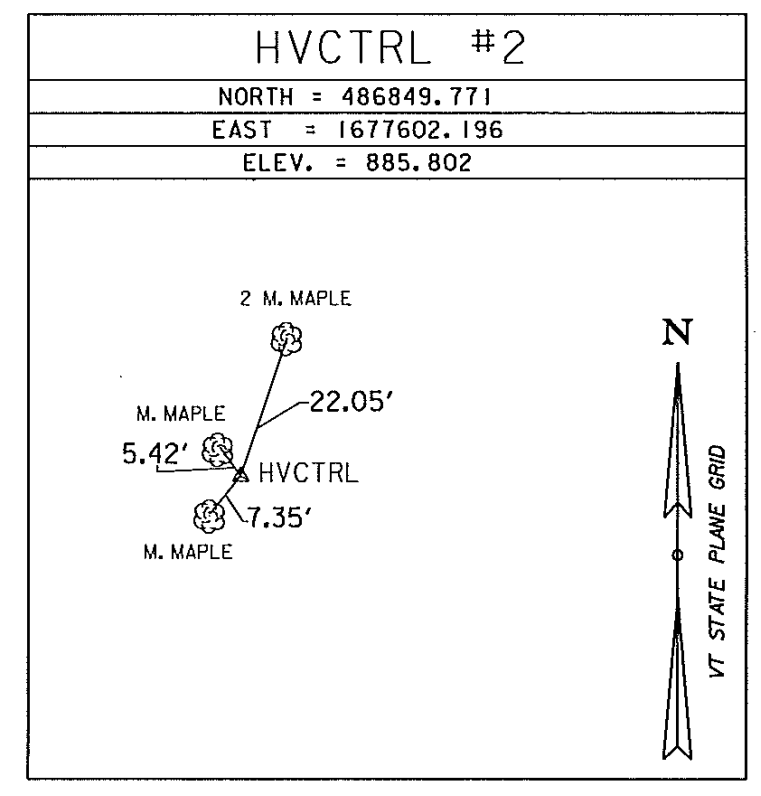
--- HVCTRL #1 ---
 S STRAFFORD BR 25
 NORTH = 486206.940
 EAST = 1677367.840
 ELEV. = 894.930

GENERAL LOCATION SOUTH STRAFFORD, VT.
 THE MARK IS SET IN THE TOP OF THE ABUTMENT AT THE SOUTHWEST CORNER OF A BRIDGE OVER A STREAM FEEDING THE WEST BRANCH OF THE OMPOMPANOOSUC RIVER. IT IS ABOUT 100 M SOUTHWEST OF THE BARRETT MEMORIAL BRIDGE OVER THE WEST BRANCH.
 IT IS 15 CM EAST OF THE WEST EDGE OF THE ABUTMENT, 15 CM WEST OF THE EAST EDGE OF THE ABUTMENT, 0.3 M SOUTH-SOUTHWEST OF THE SOUTH TIP OF THE BRIDGE RAIL, 0.8 M NORTH OF THE ABUTMENT VERTICAL ANGLE POINT AND 5.3 M NORTHWEST OF POLE NO 3.

--- HVCTRL #10 ---
 JB 1
 NORTH = 486660.580
 EAST = 1684339.340
 ELEV. = 829.260

GENERAL LOCATION, SOUTH STRAFFORD, VT.
 1.6 MI (2.6 KM) EAST OF, AT DESERTED VILLAGE OF COPPER FLAT, 25 FT (7.6 M) SOUTHWEST OF CENTER OF ROAD, 250 FT (76.2 M) NORTHWEST JUNCTION OF DISCONTINUED ROAD SOUTHWEST, IN EMBEDDED BOULDER.

TRAVERSE TIES



DATUM	
VERTICAL	NAVD 88
HORIZONTAL	NAD 83(2011)
ADJUSTMENT	COMPASS

PROJECT NAME: STRAFFORD	
PROJECT NUMBER: BF 0177(10)	
FILE NAME: sl3J088+1.dgn	PLOT DATE: 10-SEP-2015
PROJECT LEADER: K. HIGGINS	DRAWN BY: S. DONOVAN
DESIGNED BY: R. KLINEFELTER	CHECKED BY: J. SALVATORI
TIE SHEET	SHEET 8 OF 11