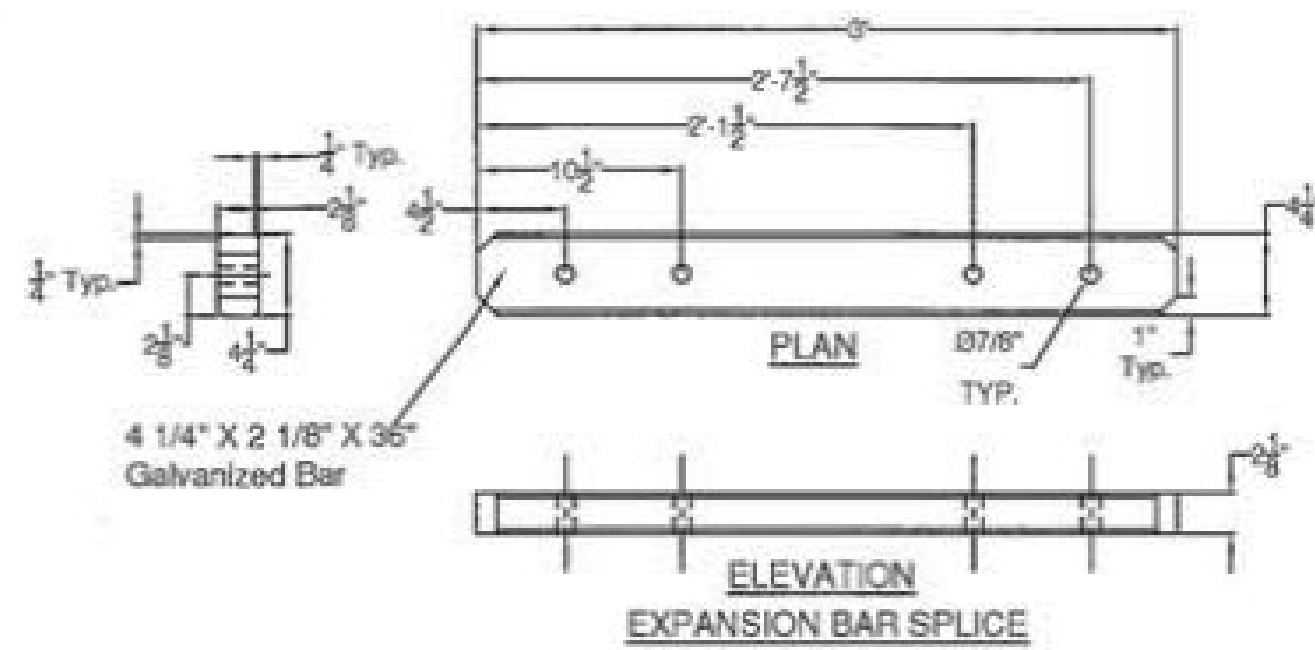
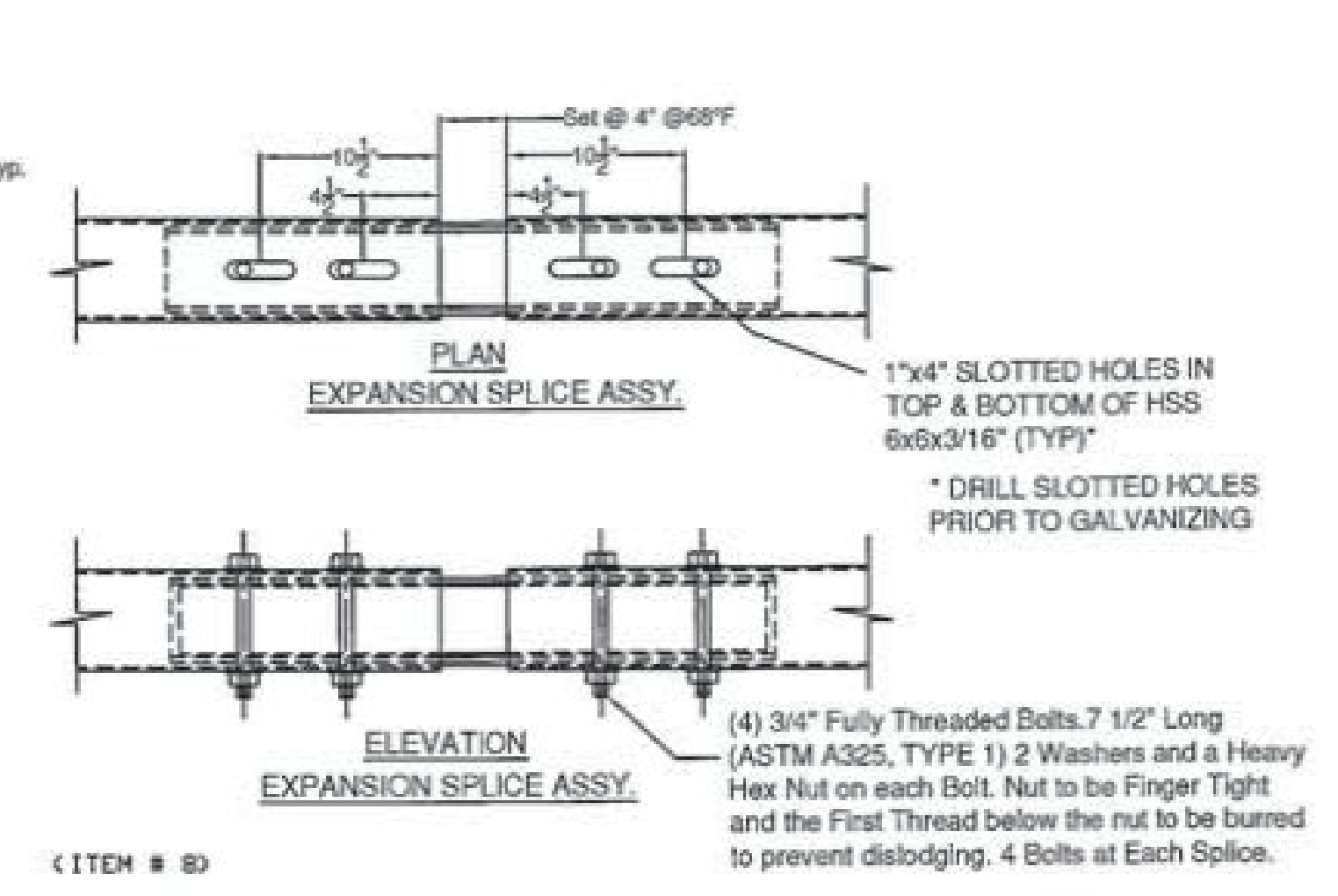
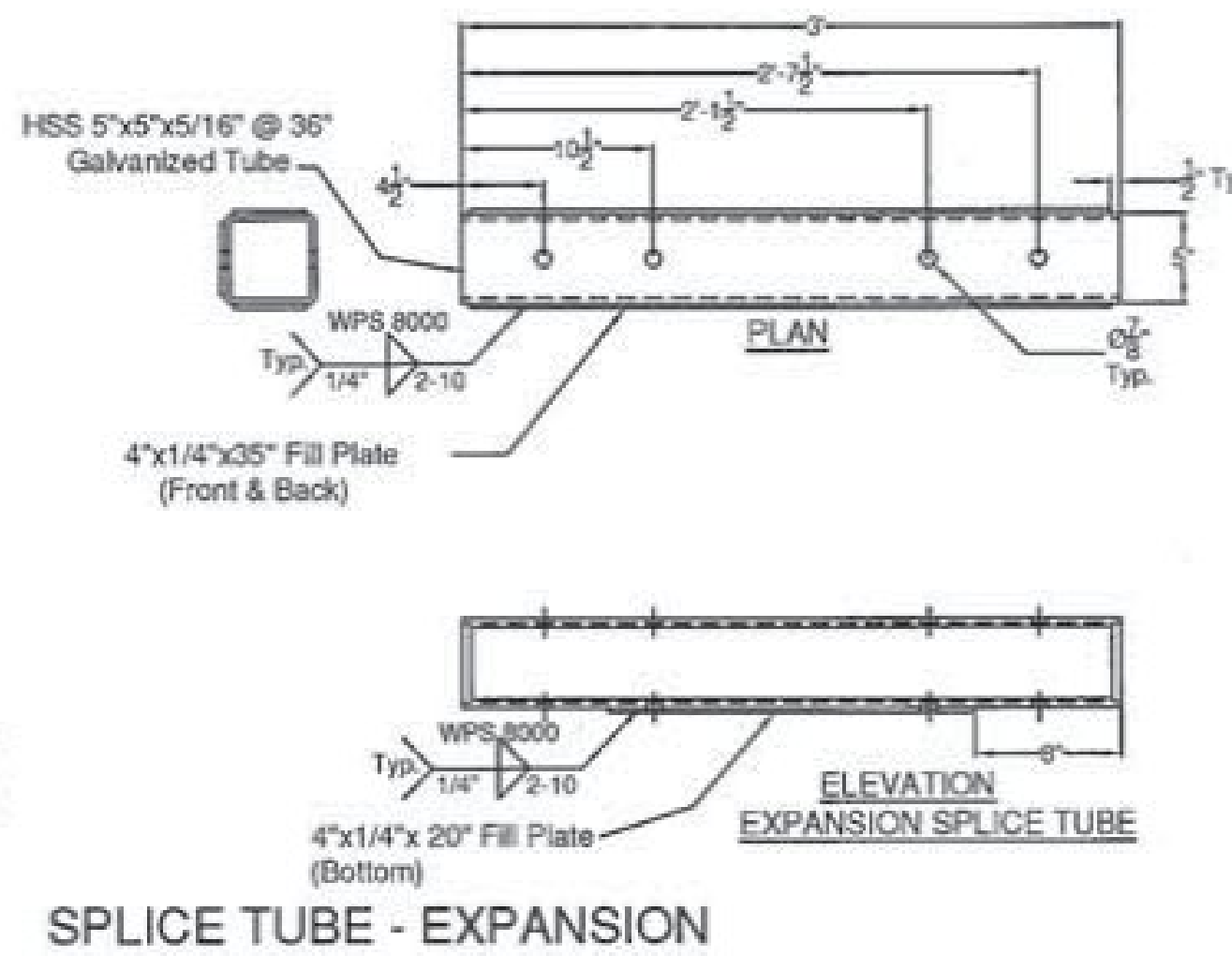
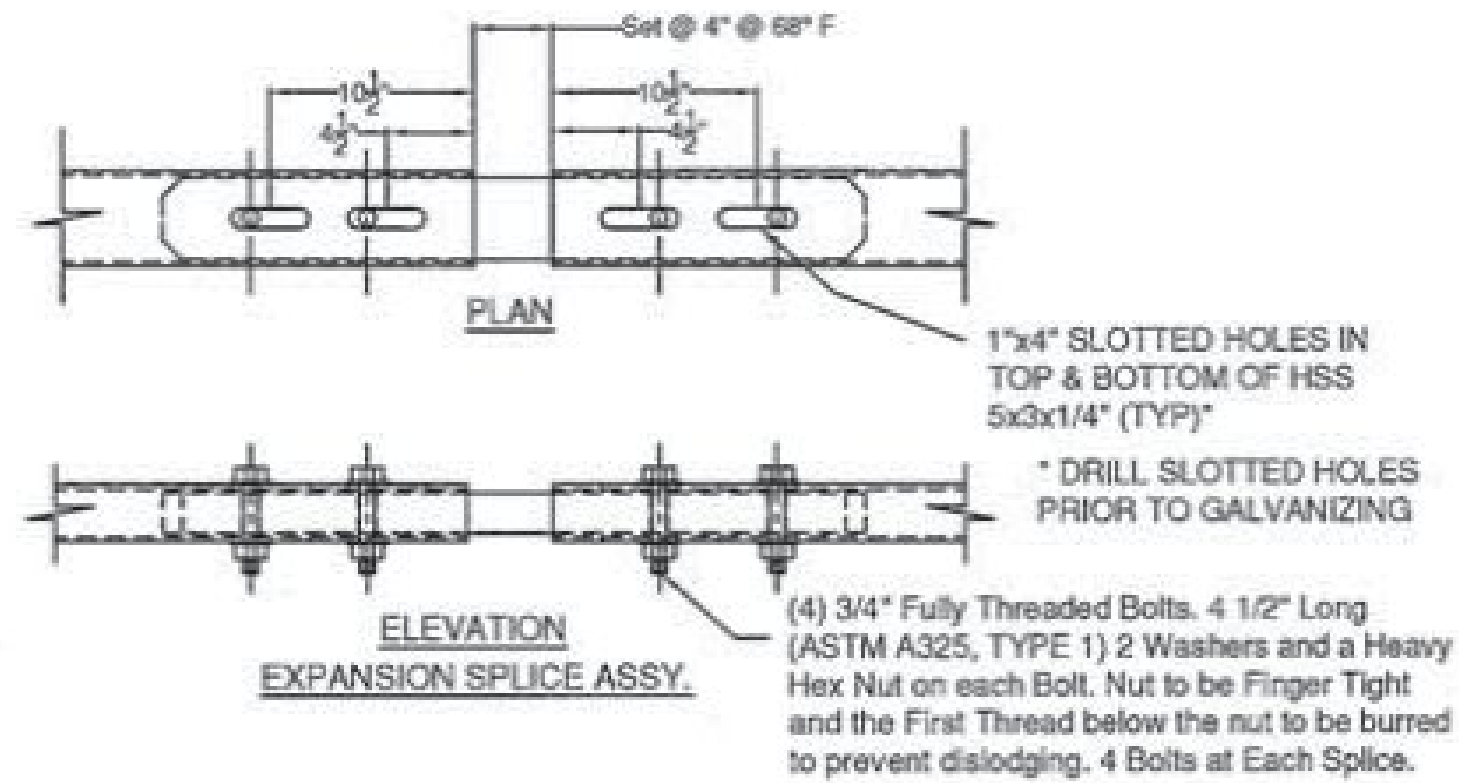


**SPLICE BAR - EXPANSION**

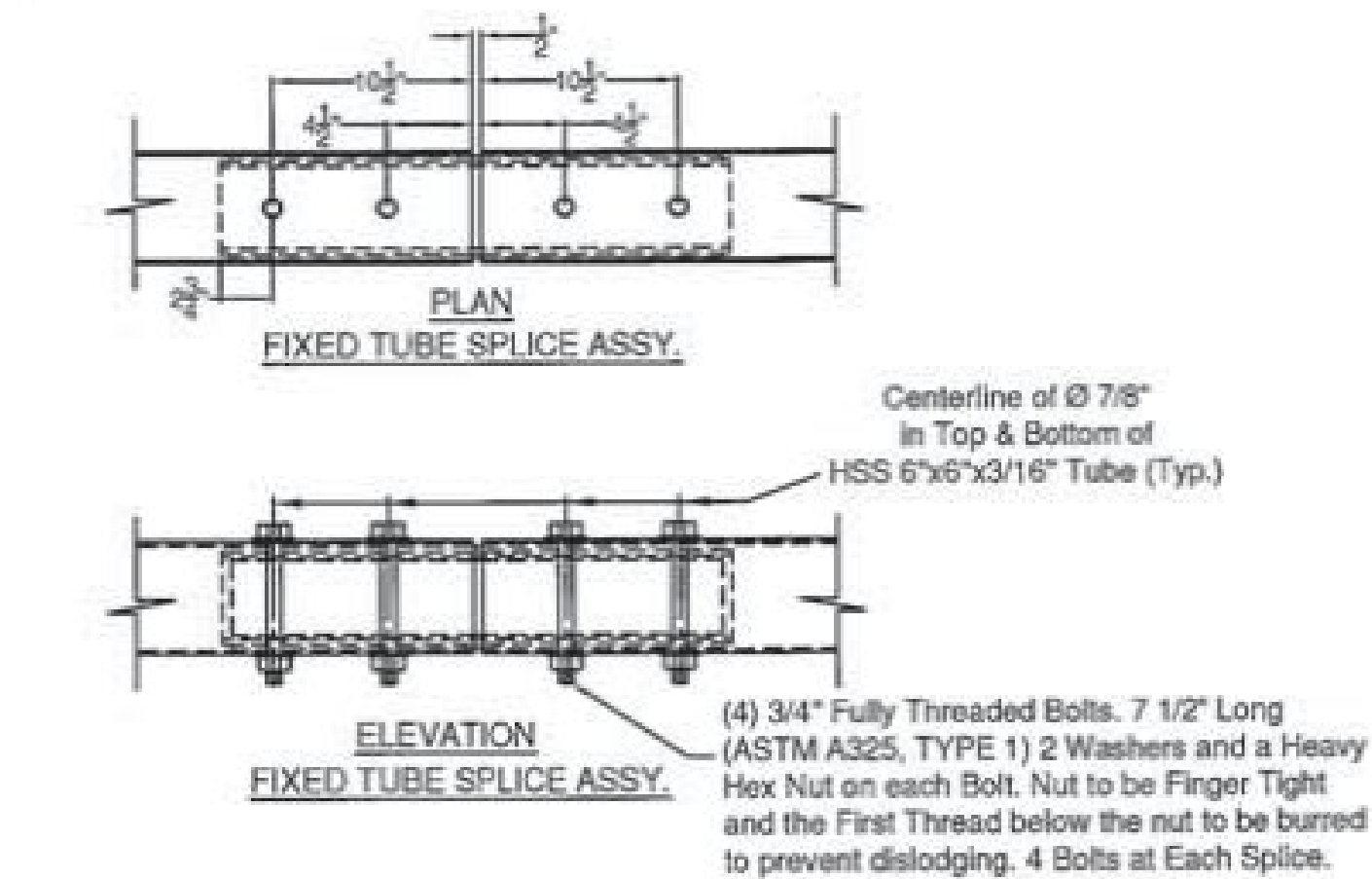
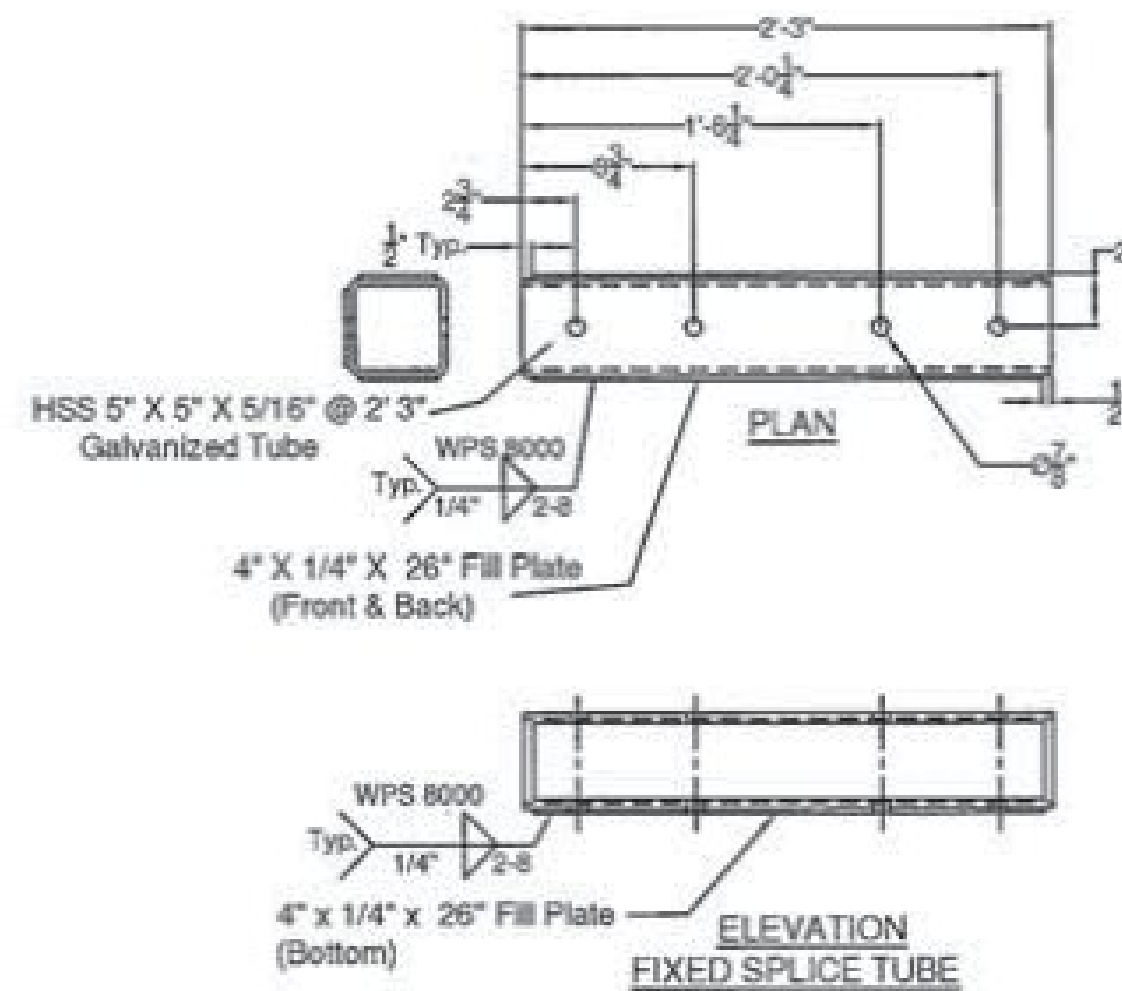


(ITEM # 9)



(ITEM # 8)

**SPLICE TUBE - EXPANSION**



(ITEM # 7)

**SPLICE TUBE - FIXED**

Vermont Agency of Transportation  
**RECEIVED**  
 CK'D BY: \_\_\_\_\_ OK'D BY: Rob Young  
 February 15, 2017  
 RESUBMIT No. \_\_\_\_\_ Approved  
 BY: Rob Young DATE: 02/22/17

ITEM #: 621.725

SHEET 5 OF 5

STRUCTURAL STEEL TO COMPLY W/ ASTM A6

TOLERANCE UNLESS OTHERWISE NOTED:  
 FRACTIONS = ± 1/16"  
 ANGLES = ± 1/2"  
 DIAMETERS = ± 1/32"

**GUARD RAIL TO BRIDGE RAIL TRANSITION DETAILS SHEET**

TH-1, RURAL MAJOR COLLECTOR, FAS ROUTE 0211, BRIDGE # 8  
 TOWN OF HUNTINGTON, COUNTY OF CHITTENDEN, VT.

R NO.	DATE	DESCRIPTION	BY	R	NO.	DATE	DESCRIPTION	BY
E 1	2/8/17	REVISED PER 12/16/16 MARK-UP	EP	E				

<p><b>ELDERLEE, INC.</b>                  OAKS CORNERS, NEW YORK 14518                  email: diong@elderlee.com / epeck@elderlee.com                  Tel: 315-789-6670 Fax: 315-789-6615</p>	<p>                     DRAWN: E.P. 12/14/16                      CHECKED: D.L.                      APPROVED: _____                      SCALE: _____                      SCHEMATIC: _____                      DRAWING NO. F.R.L. HUNTINGTON-02-T                 </p>
---	---