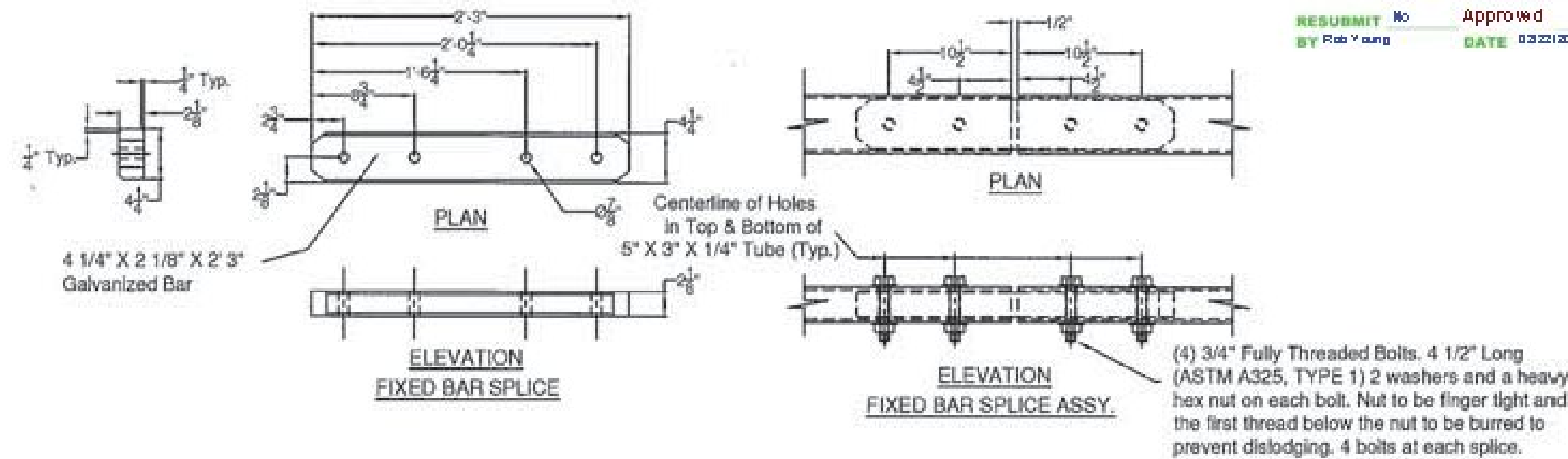
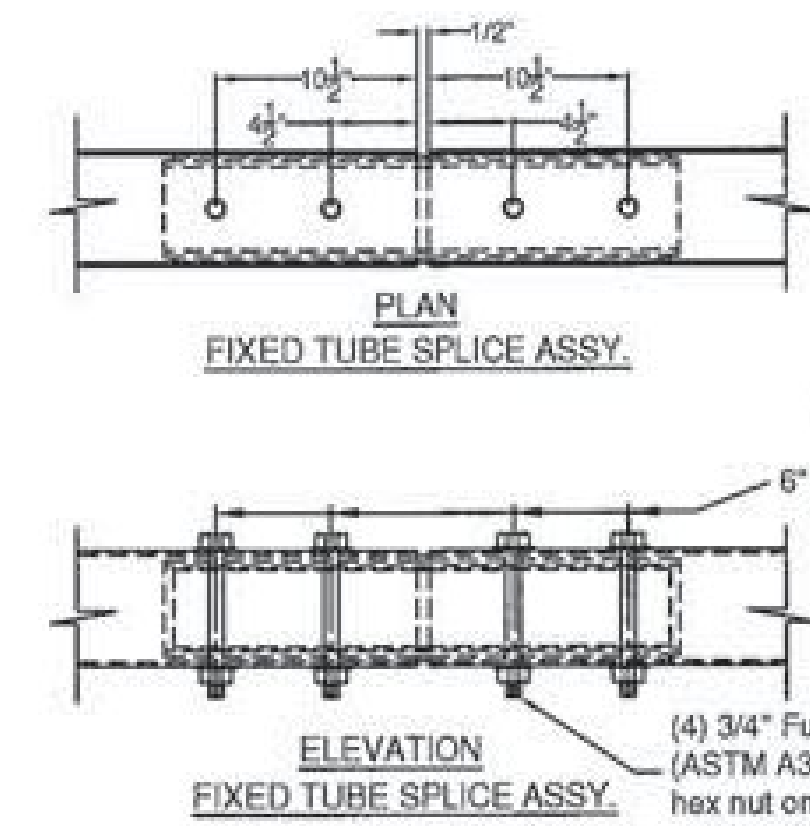
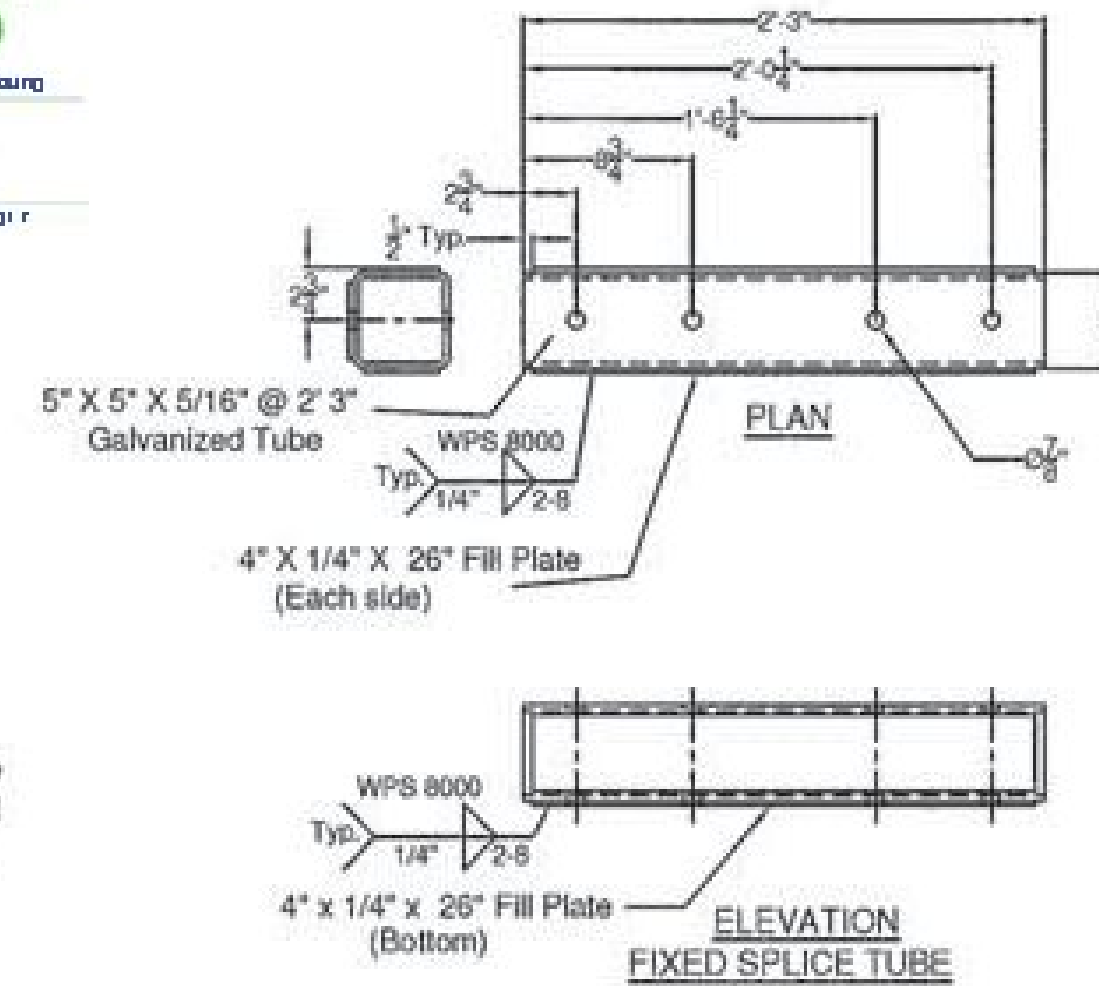


SPLICE BAR - FIXED



Vermont Agency of Transportation
RECEIVED
 CK'D BY: [Signature] OK'D BY: Rob Young
 February 15, 2017
 RESUBMIT No. Approved
 BY: Rob Young DATE: 02/22/17

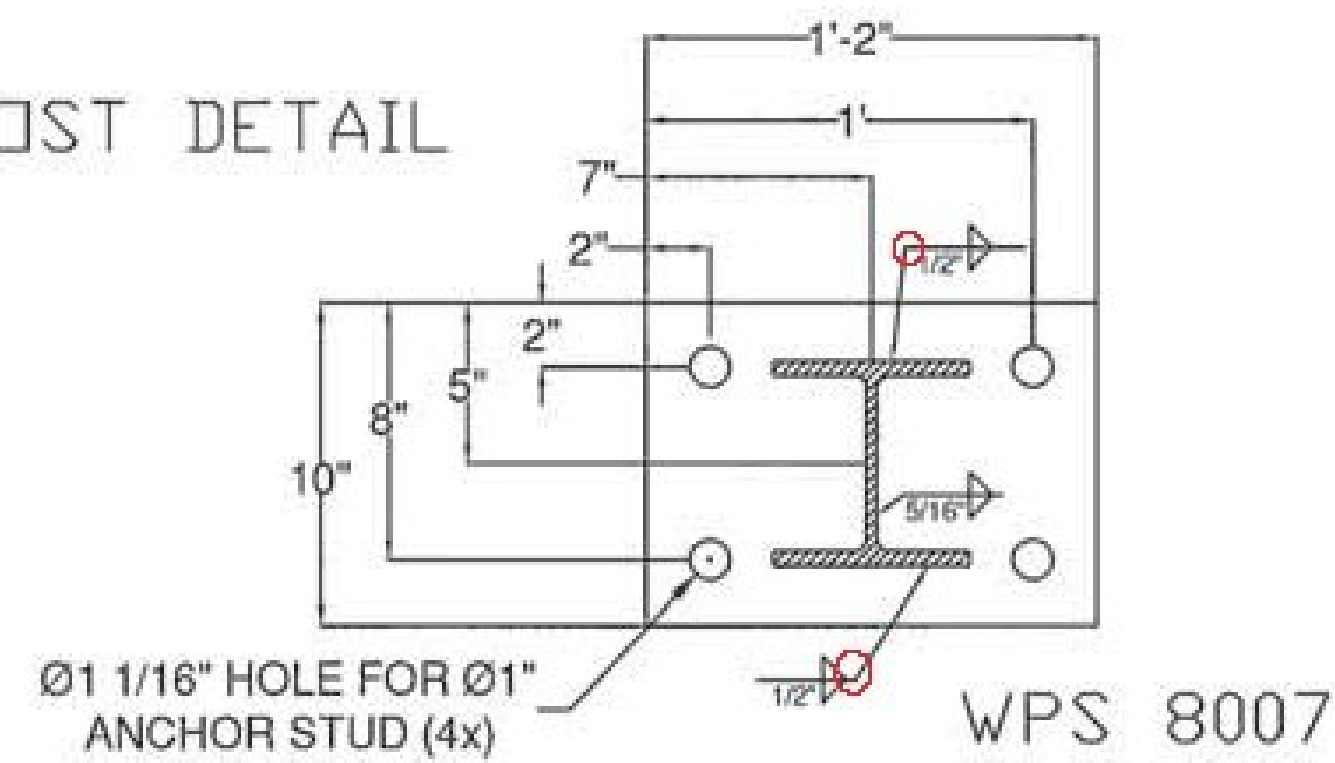


Centerline of Holes
 in Top & Bottom of
 6" X 6" X 3/16" Tube (Typ.)

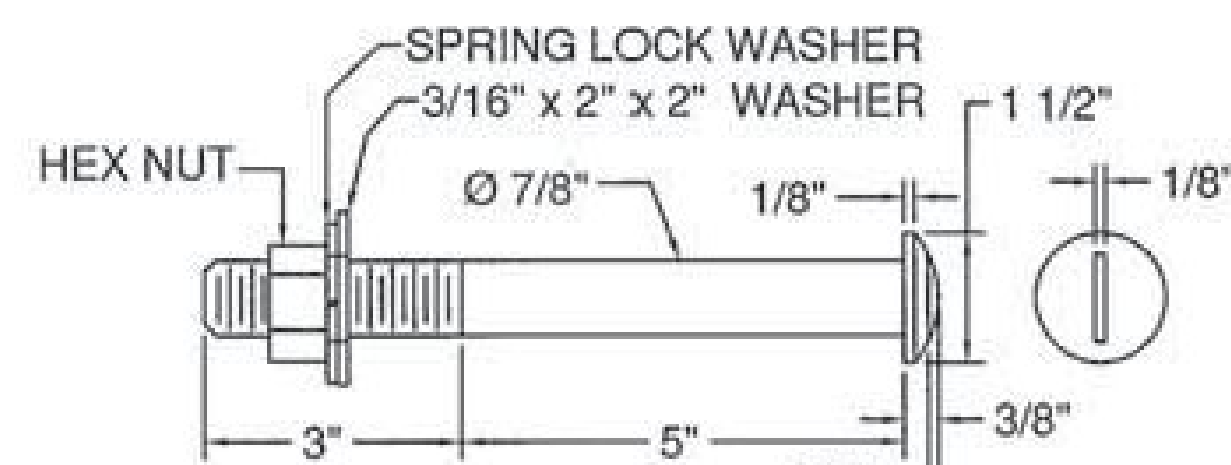
(4) 3/4" Fully Threaded Bolts, 7 1/2" Long
 (ASTM A325, TYPE 1) 2 washers and a heavy
 hex nut on each Bolt. Nut to be finger tight and
 the first thread below the nut to be burred to
 prevent dislodging. 4 bolts at each splice.

SPLICE TUBE - FIXED

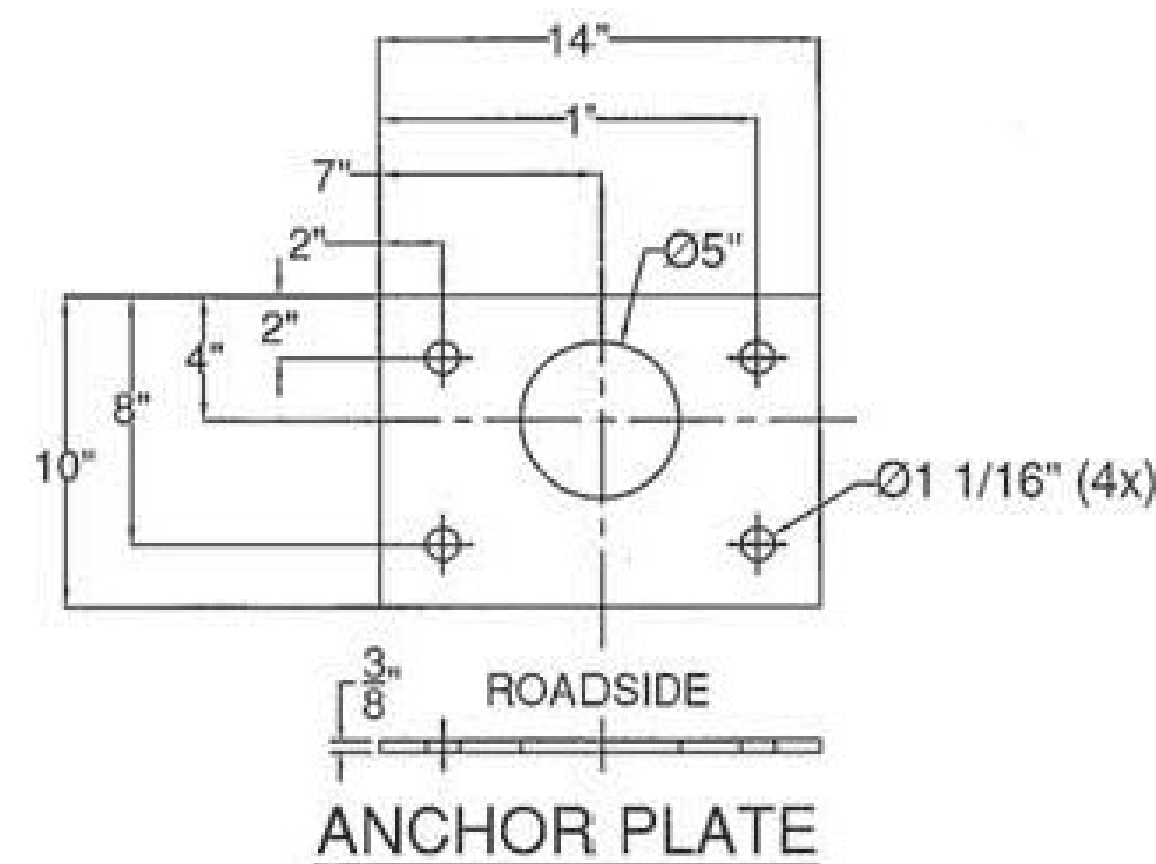
BRIDGE POST DETAIL



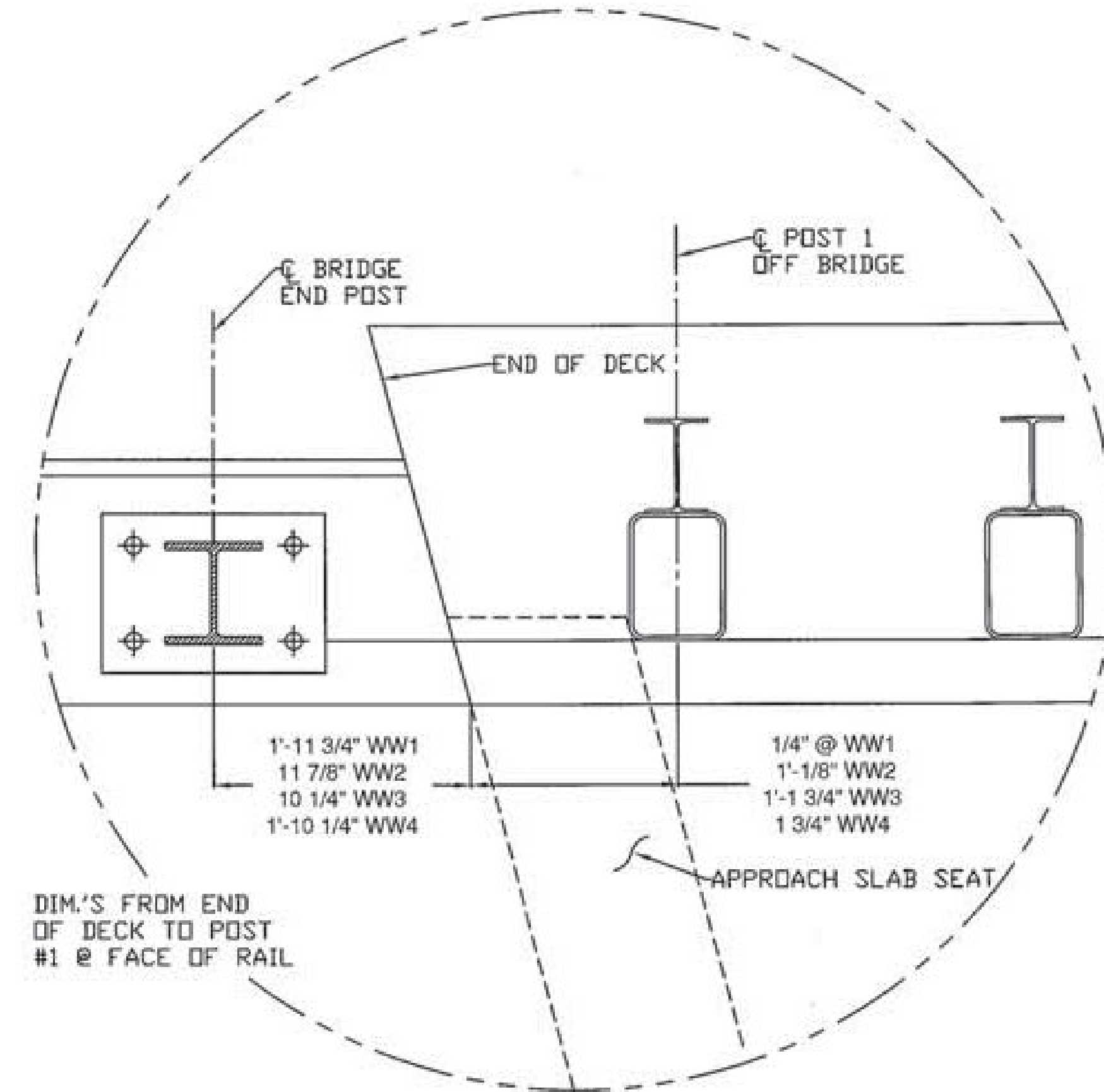
HARDWARE NOTES	
ITEM #	FUNCTION
12	ANCHOR STUDS, (4) PER POST ON BASE (ITEM #1)
13	(2) PER ANCHOR STUD
14	(1) PER ANCHOR STUD
15	(1) PER ANCHOR STUD
16	BOLT TOP & BOTTOM RAIL TO PAST (ITEM #1), (4) PER POST
17	BOLT CENTER RAIL TO SHELF ANGLES (ITEM #21)
18	BOLT RAILING ANGLE (ITEM #21) TO POST (ITEM #1)
19	BOLT THRU RAILING & TUBE SPLICES (ITEM #9)
20	BOLT THRU RAILING & BAR SPLICES (ITEM #8)



SLOTTED ROUND HEAD BOLT



ANCHOR PLATE



SHEET 2 OF 2

ITEM #: 525.335
 STRUCTURAL STEEL TO
 COMPLY W/ ASTM A6

TOLERANCE UNLESS
 OTHERWISE NOTED:
 FRACTIONS = ± 1/16"
 ANGLES = ± 1/2"
 DIAMETERS = ± 1/32"

BRIDGE RAIL DETAILS SHEET											
TH-1, RURAL MAJOR COLLECTOR, FAS ROUTE 0211, BRIDGE # 8											
TOWN OF HUNTINGTON, COUNTY OF CHITTENDEN, VT.											
R	NO.	DATE	DESCRIPTION	BY	R	NO.	DATE	DESCRIPTION	BY		
E	1	2/8/17	REVISED PER 12/16/16 MARK-UP	EP							
V											

ELDERLEE, INC.
 OAKS CORNERS, NEW YORK 14518
 E-Mail: dlong@elderlee.com, epeek@elderlee.com
 Tel: 315-789-6670 Fax: 315-789-6615

DRAWN: [Signature] E.P. 12/14/16
 CHECKED: [Signature] D.L.
 APPROVED: [Signature]
 SCALE: SCHEMATIC
 DRAWING NO. F.R.L.-HUNTINGTON (32)