

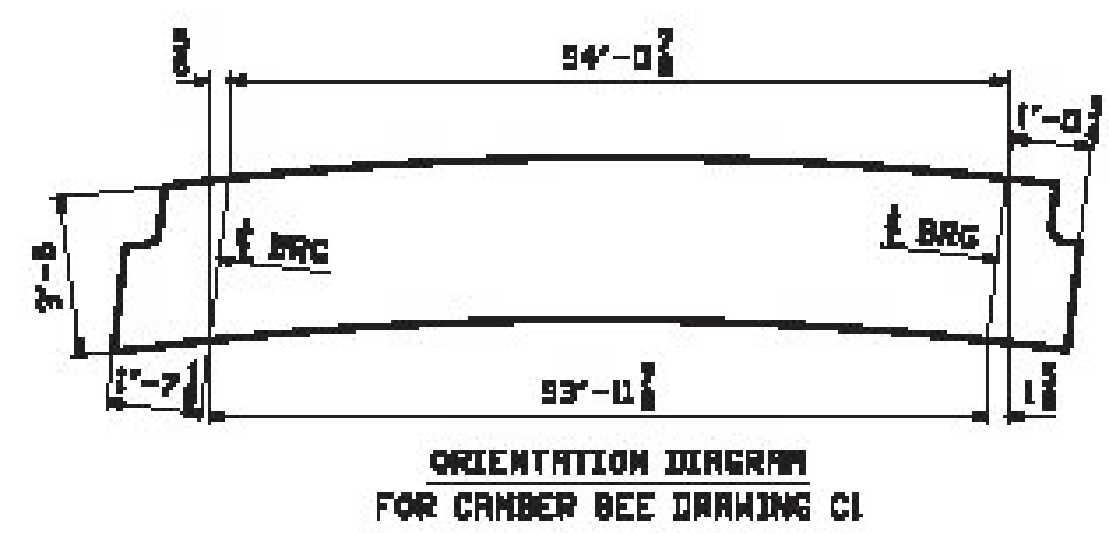
ONE - GIRDER - 3G3

FOR GIRDER STANDARDS DETAILS SEE DRAWING XI.
 FOR CAMBER & FLANGE DIAGRAMS SEE DRAWING CI.
 FOR GENERAL NOTES SEE DRAWING GM.
 TS DENOTES MATERIAL SUBJECT TO CHIPPY V-NOTCH TESTING.

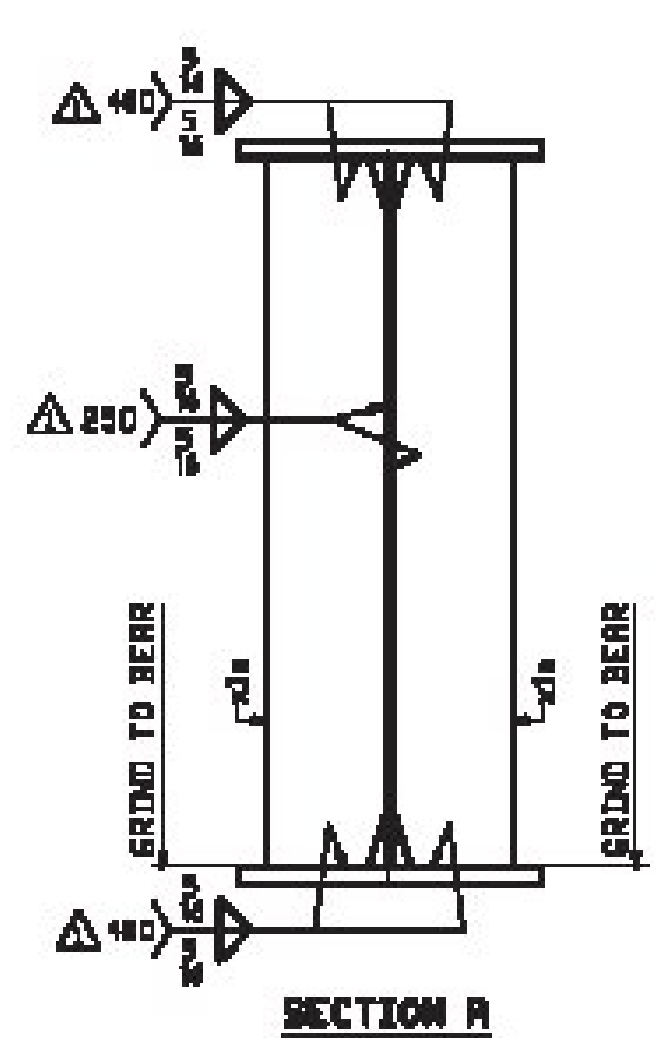
BILL OF MATERIAL						JOB NO.	DRAWING NO.	REV.
ITEM	QTY	UNIT	DESCRIPTION	LENGTH	WEIGHT			
1	1	EA	GIRDER				3	
1	1	EA	PL 3/4x42	84	84	2020-20MT		4809
1	1	EA	PL 3/4x42	38	38	2020-20MT		2307
1	1	EA	PL Lx10	30	10			1324
1	1	EA	PL Lx10	84	2			3930
1	1	EA	PL Lx10	38	1 1/2	2020-20MT		1323
1	1	EA	PL Lx10	84	6	2020-20MT		3831
2	4	EA	PL 1/2x7	3	8	FR1		83
2	6	EA	PL 1/2x5	3	6			30

SECTION BA

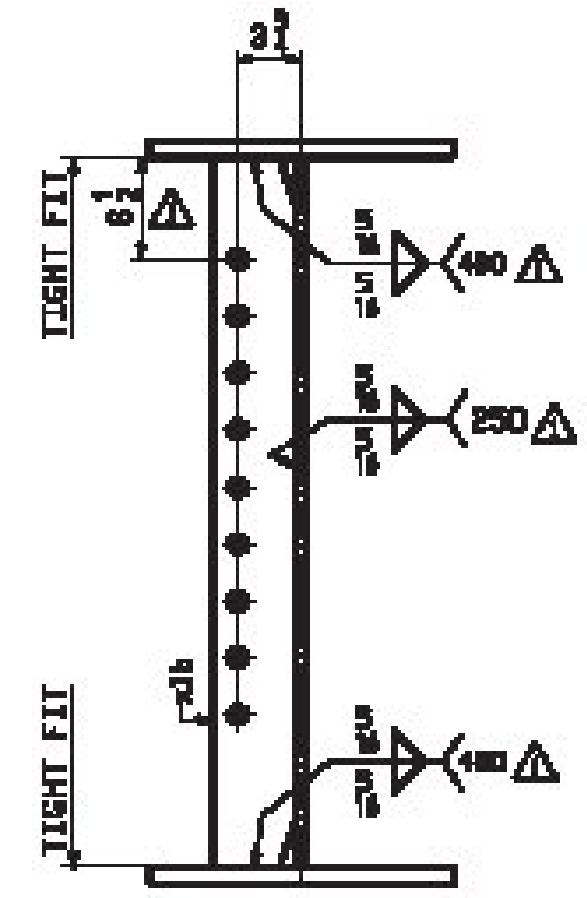
SECTION BB



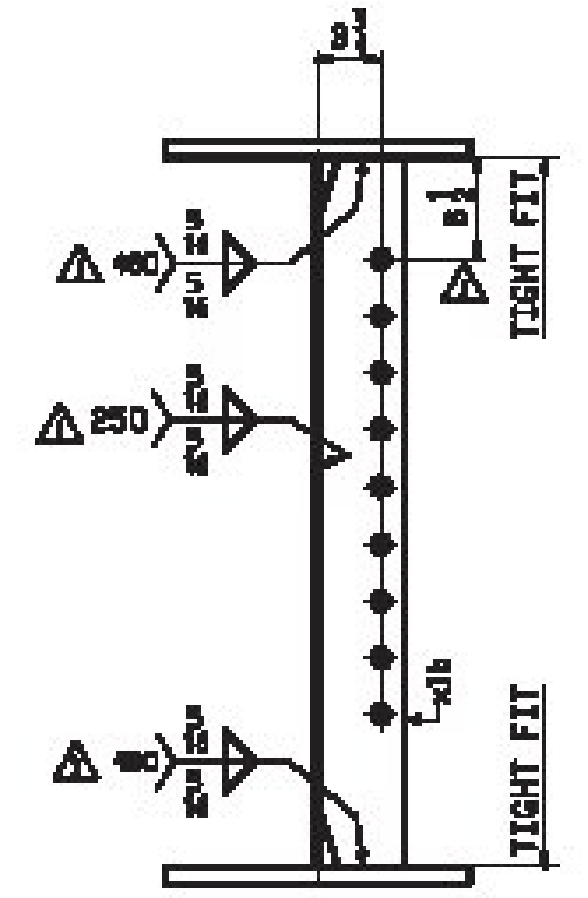
ORIENTATION DIAGRAM FOR CAMBER SEE DRAWING CI



SECTION A



SECTION B



SECTION C

Vermont Agency of Transportation
RECEIVED
 February 16, 2017
 Approved As Noted
 DATE 03/05/2017

REV. DATE	REVISIONS	DESIGNER	CHECKER	APPROVAL	SHOP
MATERIAL: M270-50N (UND)		SURFACE PREP. & PRIME: SEE DWG GNL		HOLE: 1/4 (UND)	
DESCRIPTION: GIRDER 3G3		SHOP BOLTS: NONE			
CASCO BAY STEEL STRUCTURES, INC. 1 MILLAGE HWY. SOUTH PORTLAND, ME 04106 PHONE: (207) 200-5700 FAX: (207) 200-5700					
STRUCTURE: TH-1, FRS RT. 0211 / HUNTINGTON RIVER RURAL MAJOR COLLECTOR BRIDGE 8 COUNTY OF CHITTENDEN			DATE: 01/12		
LOCATION: TOWN OF HUNTINGTON, VERMONT			DATE: 01/18		
JOB NO. 695-1			DWG NO. 3		
CUSTOMER: VERMONT AGENCY OF TRANSPORTATION			REV. 3		