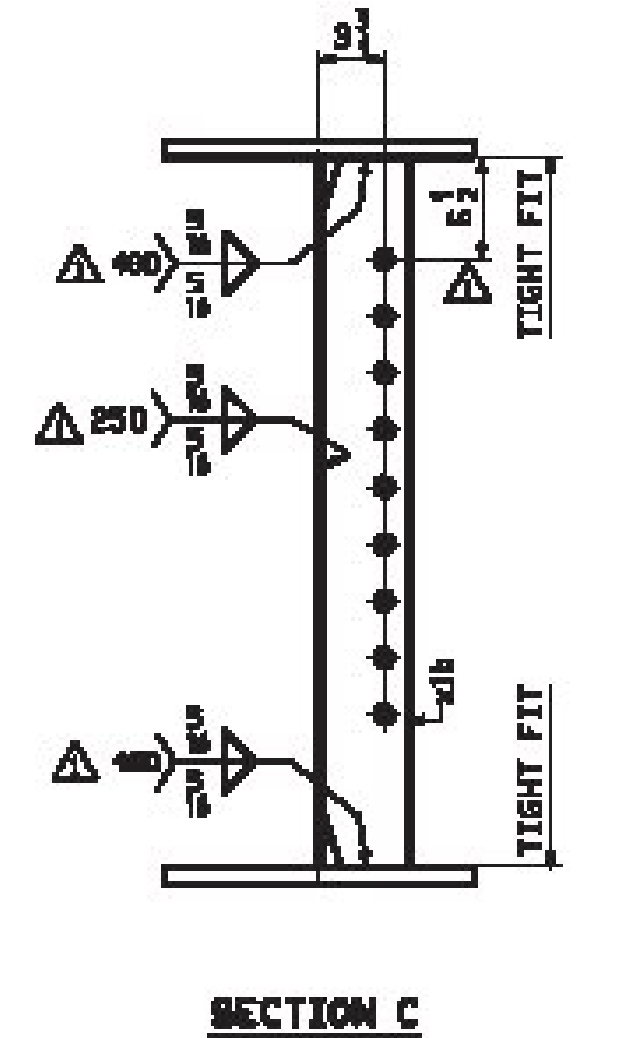
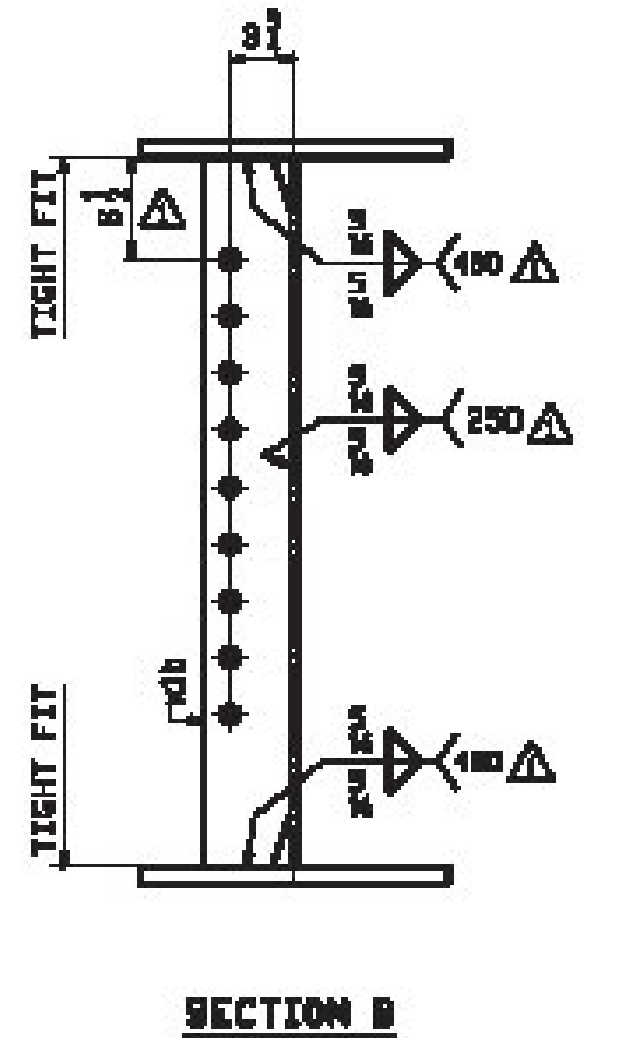
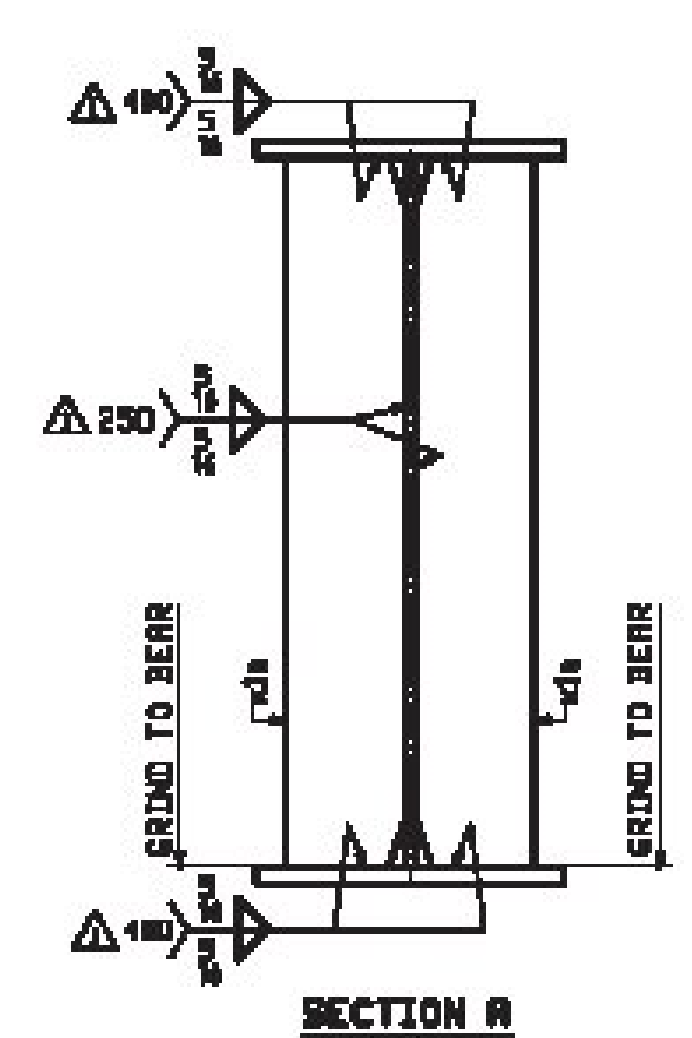
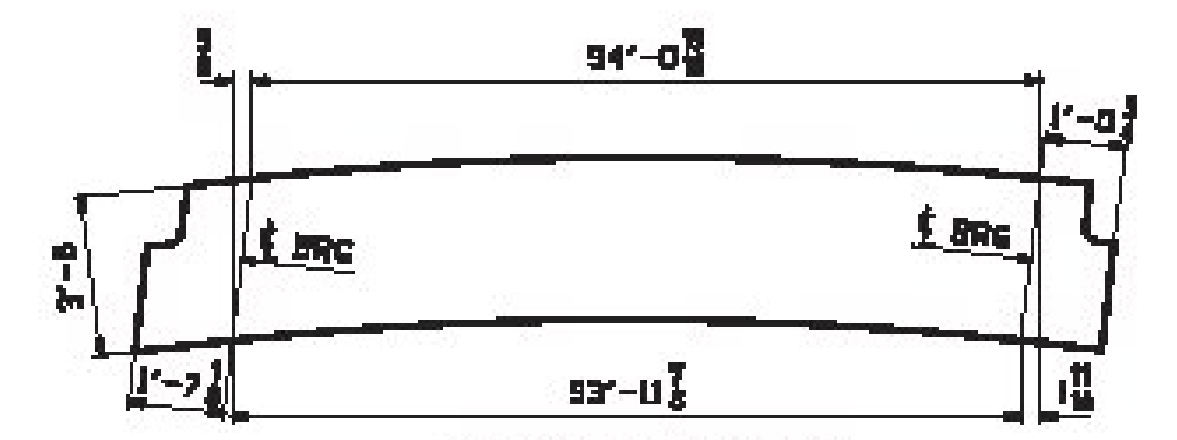
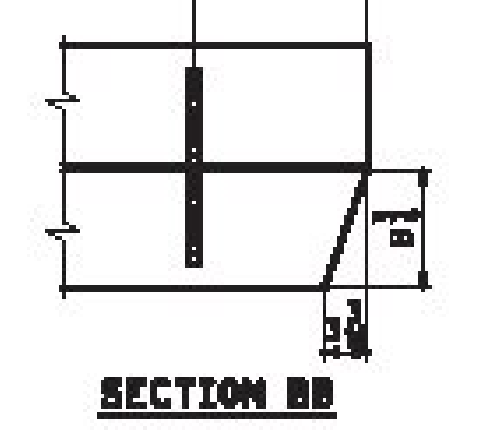
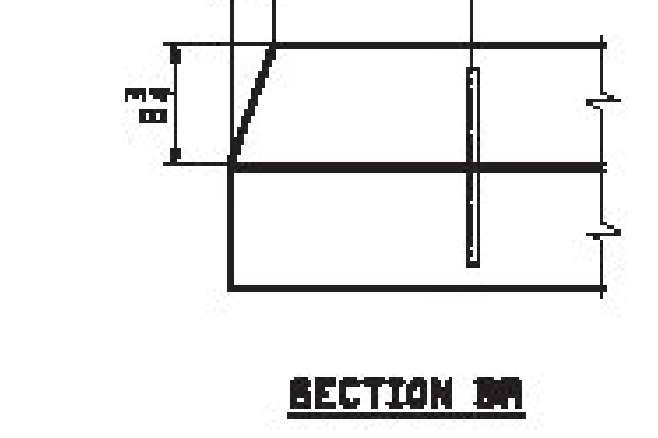


BILL OF MATERIAL						REV. NO.	ISSUE NO.	REV.
ITEM NO.	QTY	DESCRIPTION	LENGTH	WEIGHT	REMARKS	REV. NO.	ISSUE NO.	REV.
2G2	1	GIRDER					10198	
L E	3	PL 1/2 x 42	84	8	A270-50WZ		4829	
L C	3	PL 1/2 x 42	32	3 1/2	A270-50WZ		2308	
L L	3	PL 1/2 x 38	30	10 3/8			1854	
L T	3	PL 1/2 x 38	84	8			3950	
L C	3	PL 1/2 x 38	32	1 1/2	A270-50WZ		1959	
L R	3	PL 1/2 x 38	84	8	A270-50WZ		3951	
B B	4	PL 1/2 x 7	9	8	A270		83	
B C	5	PL 1/2 x 7	3	6			80	

ONE - GIRDER - 2G2

FOR GIRDER STANDARDS DETAILS SEE DRAWING X1.
 FOR CAMBER & FLANGE DIAGRAMS SEE DRAWING C1.
 FOR GENERAL NOTES SEE DRAWING G01.
 T2 DENOTES MATERIAL SUBJECT TO CHARPY V-NOTCH TESTING.



Vermont Agency of Transportation
RECEIVED
 CK'D BY: Rob Young
 OK'D BY: Rob Young
 February 16, 2017
 Approved As Noted
 RESUBMIT BY: Rob Young
 DATE: 03/09/2017

2/15/17	APPROVAL COMMENTS	JTB	DBH		
REV. DATE	REMARKS	DWN	CHK	APPV	SHOP
MATERIAL:	SURFACE PREP. & PAINT:	HOLES:	SHOP BOLTS:		
A270-50W (UN)	SEE DWG G01	6/16 (UN)	NONE		
DESCRIPTION					
GIRDER 2G2					
CASCO BAY STEEL STRUCTURES, INC. 1 MILLING AVE. PHONE 802-780-5782 SOUTH PORTLAND, ME 04861 FAX 802-780-5788					
STRUCTURE:	TH-1, FRS RT. 021 / HUNTINGTON RIVER	DRAWN:	JTB	DATE:	01/18
	RURAL MAJOR COLLECTOR	CHK'D:	DBH	DATE:	01/18
	BRIDGE 8				
	COUNTY OF CHITTENDEN				
LOCATION:	TOWN OF HUNTINGTON, VERMONT	JOB NO.	DWC NO.		
PROJ. NO.	STATE PROJ. BF-021(32)	695-1	2		
CUSTOMER:	VERMONT AGENCY OF TRANSPORTATION				REV. 1