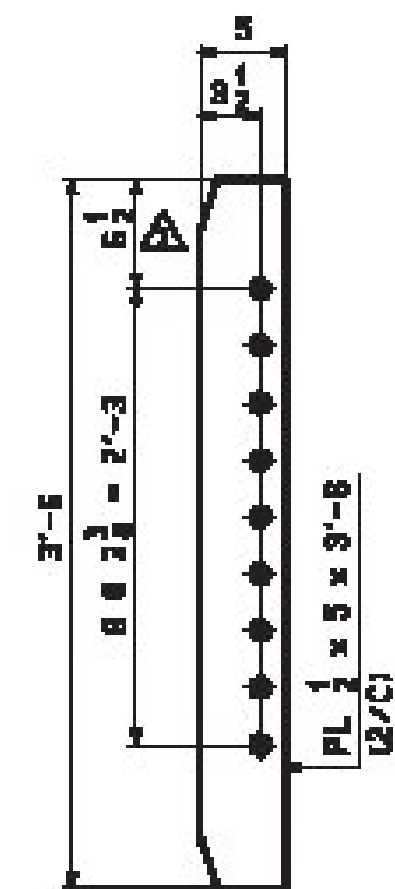
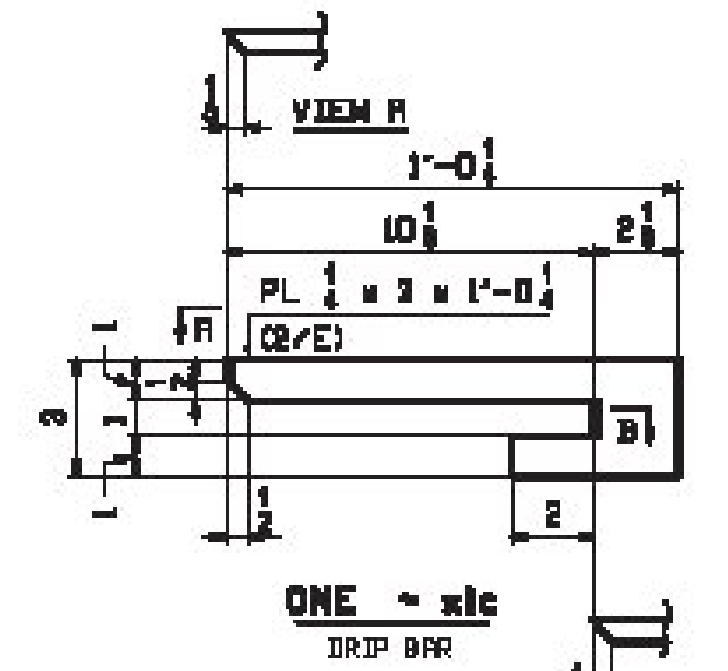


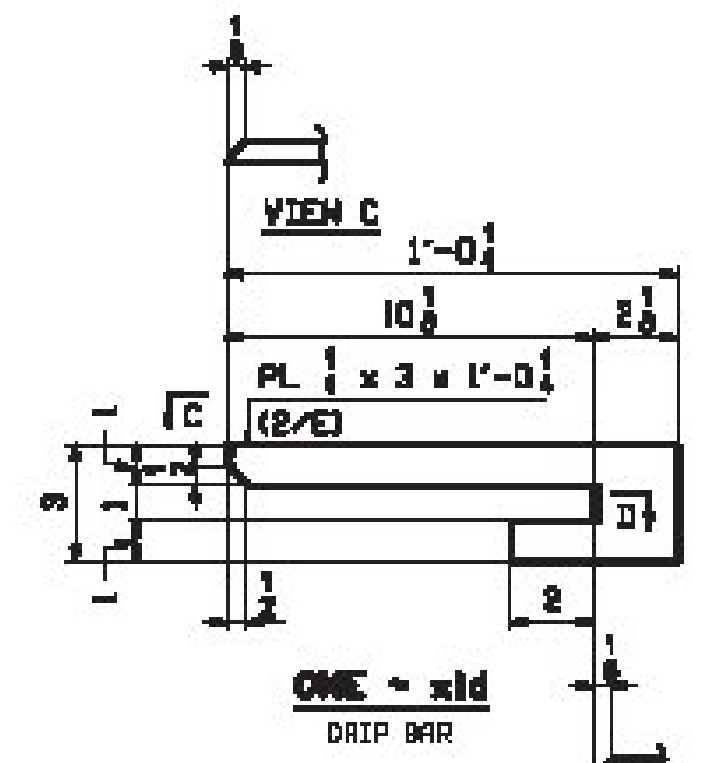
15 ~ x1a
BRG STIFF



16 ~ x1b
DIAPHR CONN PL



SECTION B



SECTION D

Vermont Agency of Transportation
RECEIVED

CK'D BY _____ OK'D BY Rob Young

February 16, 2017

RESUBMIT _____ Approved As Noted
BY Rob Young DATE 03/05/2017

NOTE:
FOR GENERAL NOTES SEE DRAWING GN1.

2/15/17	APPROVAL COMMENTS	JTB	DBH		
REV.	DATE	REMARKS	DWG	CHK	APPV
MATERIAL:	M270-50W	SURFACE PREP. & PAINT:	SEE DWG GN1	HOLES:	15/16" ø
DESCRIPTION:	STANDARD DETAILS				
		CASCO BAY STEEL STRUCTURES, INC. 1 MILLING AVE. PHONE 802-780-8782 SOUTH PORTLAND, ME 04861 FAX 802-780-8788			
STRUCTURE:	TH-1, FRS RT. 0211 / HUNTINGTON RIVER RURAL MAJOR COLLECTOR BRIDGE 8 COUNTY OF CHITTENDEN	DRAWN:	JTB	DATE:	01/18
LOCATION:	TOWN OF HUNTINGTON, VERMONT	CHK'D:	DBH	DATE:	01/18
PROJ. NO.:	STATE PROJ. BF-0211(32)	JOB NO.:	695-1	DMC NO.:	X1
CUSTOMER:	VERMONT AGENCY OF TRANSPORTATION	REV.:			