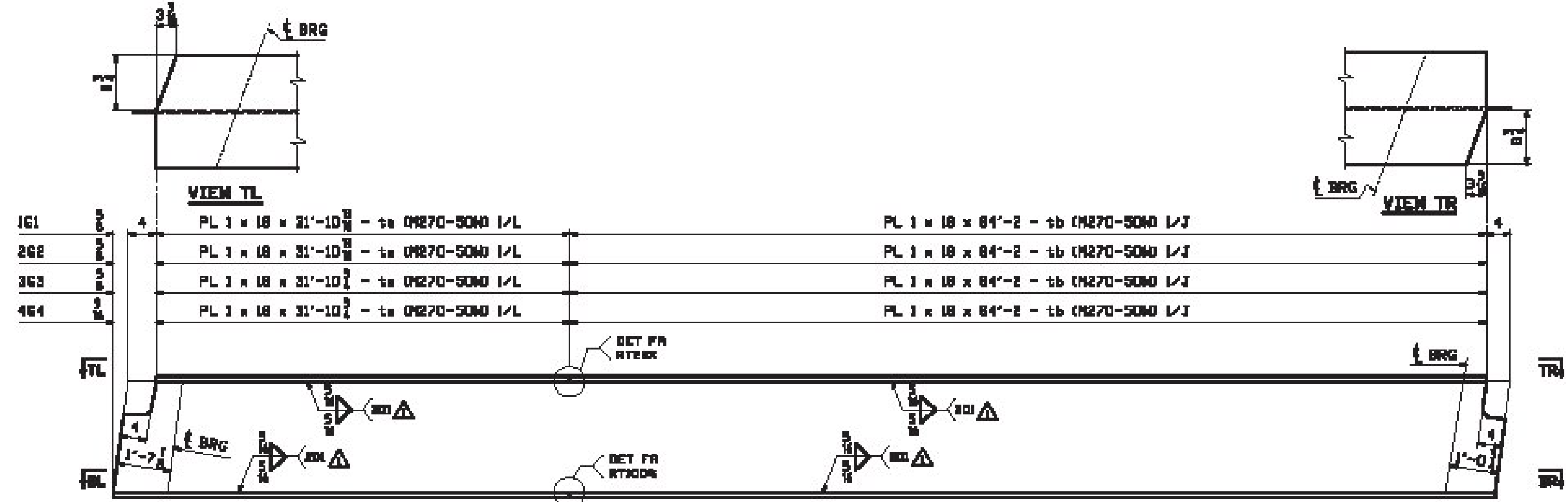


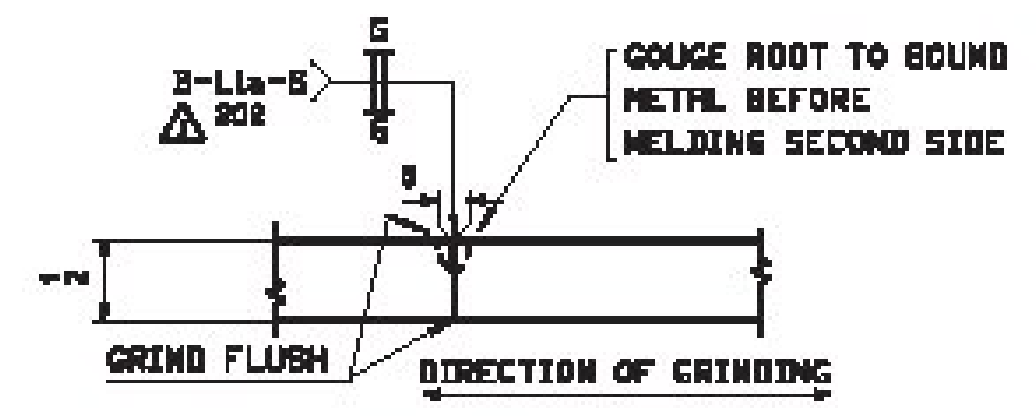
**CAMBER DIAGRAM FOR IGI, 2G2, 3G3, 4G4**

MARK	TL	BL	LE	RE	ML1	ML2	MK1	MK2	SP1	C1	C2	C3	C4	C5	C6	C7	C8	C9
1G1	84'-0 1/2"	88'-11 1/2"	0	1 3/8"	82'-10 1/2"	81'-1 1/8"	84'-8 1/4"	82'-8 3/4"	1 1/8"	3/8"	3/8"	1 1/8"	1 1/8"	1 1/8"	1 1/8"	1 1/8"	3/8"	0
2G2	84'-0 1/2"	93'-11 1/2"	0	1 1/8"	82'-10 1/2"	81'-1 1/8"	84'-8"	82'-3 1/2"	1 1/8"	3/8"	3/8"	1 1/8"	1 1/8"	1 1/8"	1 1/8"	1 1/8"	3/8"	0
3G3	84'-0 1/2"	93'-11 1/2"	0	1 3/8"	82'-10 1/2"	81'-1"	84'-8 1/4"	82'-3 3/8"	1 1/4"	3/8"	3/8"	1 1/8"	1 1/8"	1 1/2"	1 1/8"	1 1/8"	3/8"	0
4G4	84'-0 1/2"	93'-11 1/2"	0	1 1/8"	82'-10 1/2"	81'-0 1/2"	84'-8 1/2"	82'-3 1/4"	1 1/4"	3/8"	3/8"	1 1/8"	1 1/8"	1 1/2"	1 1/8"	1 1/8"	3/8"	0

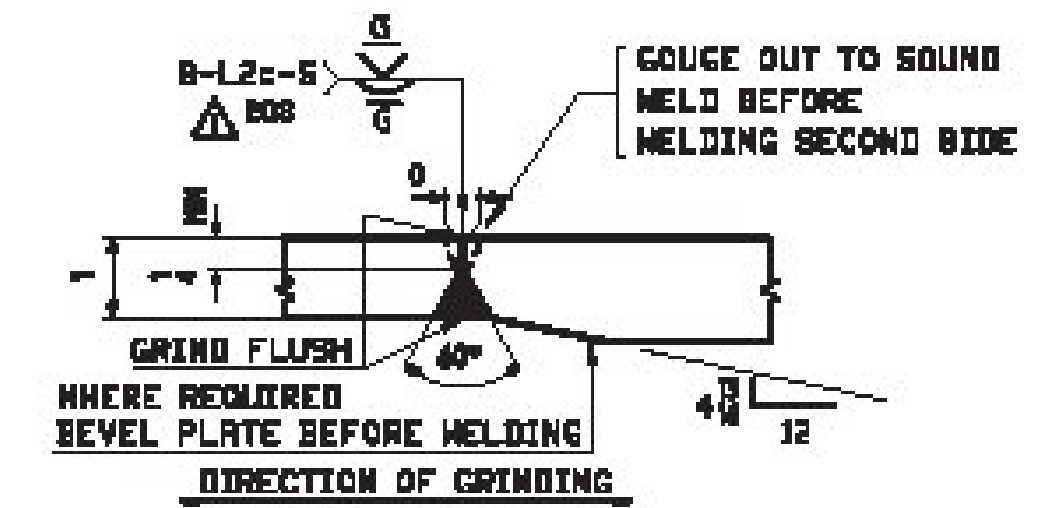


**FLANGE DIAGRAM FOR IGI, 2G2, 3G3, 4G4**

1G1	PL 1 x 18 x 31'-10 1/2" - tb (A270-50M) 1/L	PL 1 x 18 x 84'-2" - tb (A270-50M) 1/J
2G2	PL 1 x 18 x 31'-10 1/2" - tb (A270-50M) 1/L	PL 1 x 18 x 84'-2" - tb (A270-50M) 1/J
3G3	PL 1 x 18 x 31'-10 1/2" - tb (A270-50M) 1/L	PL 1 x 18 x 84'-2" - tb (A270-50M) 1/J
4G4	PL 1 x 18 x 31'-10 1/2" - tb (A270-50M) 1/L	PL 1 x 18 x 84'-2" - tb (A270-50M) 1/J
1G1	PL 1 x 18 x 32'-1 1/2" - bb (A270-50M) 1/C	PL 1 x 18 x 84'-5" - bb (A270-50M) 1/A
2G2	PL 1 x 18 x 32'-1 1/2" - bb (A270-50M) 1/C	PL 1 x 18 x 84'-5" - bb (A270-50M) 1/A
3G3	PL 1 x 18 x 32'-1 1/2" - bb (A270-50M) 1/C	PL 1 x 18 x 84'-5" - bb (A270-50M) 1/A
4G4	PL 1 x 18 x 32'-1 1/2" - bb (A270-50M) 1/C	PL 1 x 18 x 84'-5" - bb (A270-50M) 1/A



**WEB PLATE SPLICE DETAIL "NR"**



**FLANGE PLATE SPLICE DETAIL "FA"**

- NOTES:**  
 1. FOR GENERAL NOTES SEE DRAWING GNL  
 2. T2 DENOTES MATERIAL SUBJECT TO CHAPPY V-NOTCH TEST AT H FREQ. FOR ZONE 2

Vermont Agency of Transportation  
**RECEIVED**  
 CK'D BY: \_\_\_\_\_ OK'D BY: Rob Young  
 February 18, 2017  
 RESUBMIT: \_\_\_\_\_ Approved As Noted  
 BY: Rob Young DATE: 03/05/2017

APPROVAL COMMENTS	JTB	DBH
REV. DATE	REMARKS	DWN CKR
MATERIAL: A270-50M2	SURFACE PREP. & PAINT: SEE DWG GND	SHOP BOLTS:
DESCRIPTION: CAMBER & FLANGE DIAGRAMS		
CASCO BAY STEEL STRUCTURES, INC. 1 MILLING AVE. PHONE 802-780-5782 SOUTH PORTLAND, ME 04881 FAX: 802-780-5788		
STRUCTURE: TH-1, FRS RT. 021 / HUNTINGTON RIVER	DRAWN: JTB	DATE: 01/11
RURAL MAJOR COLLECTOR BRIDGE 8	CHK'D: DBH	DATE: 01/18
COUNTY OF CHITTENDEN		
LOCATION: TOWN OF HUNTINGTON, VERMONT	JOB NO. 695-1	DWG NO. C1
PROJ. NO. STATE PROJ. BF-021(32)		
CUSTOMER: VERMONT AGENCY OF TRANSPORTATION		REV. A