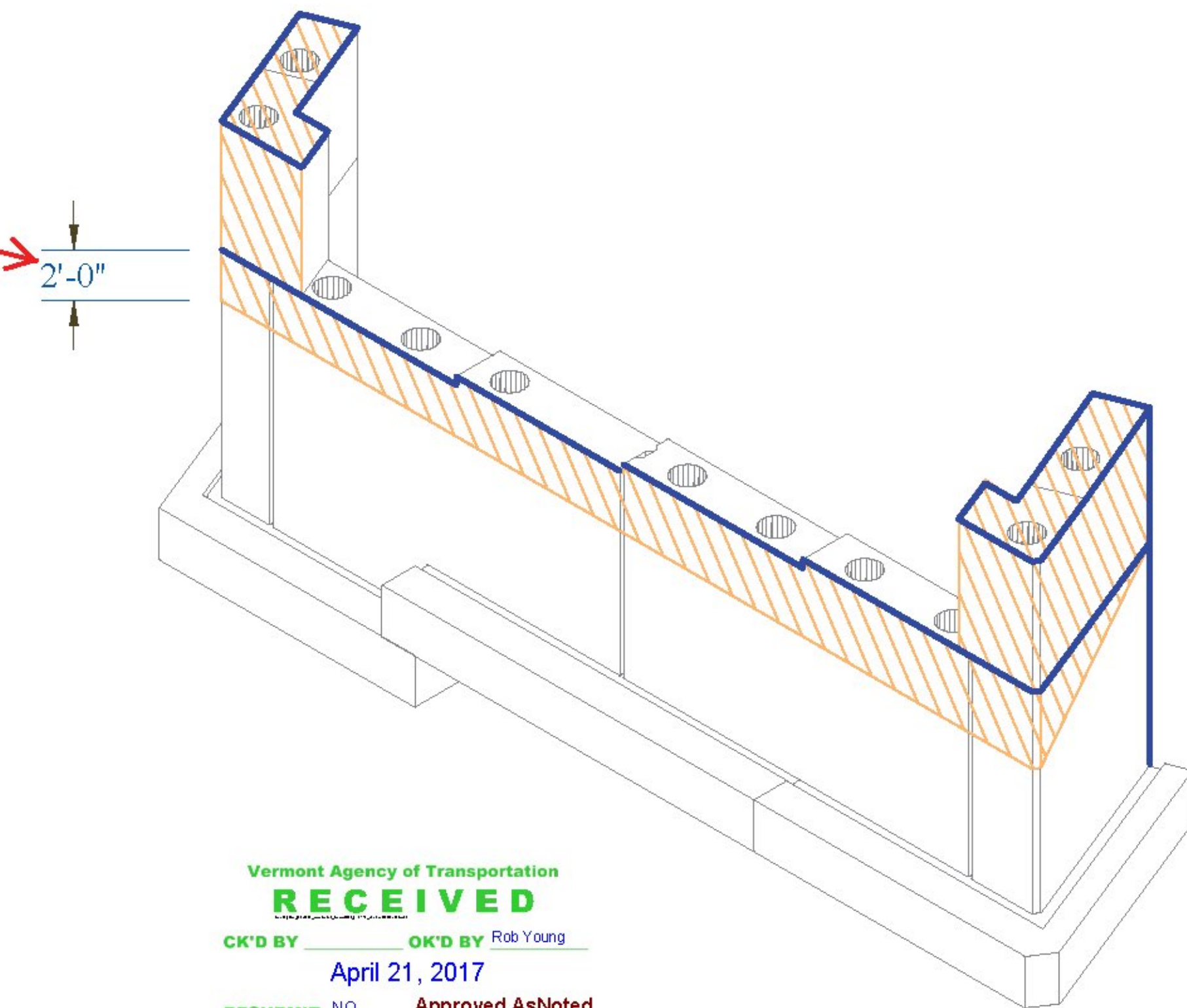
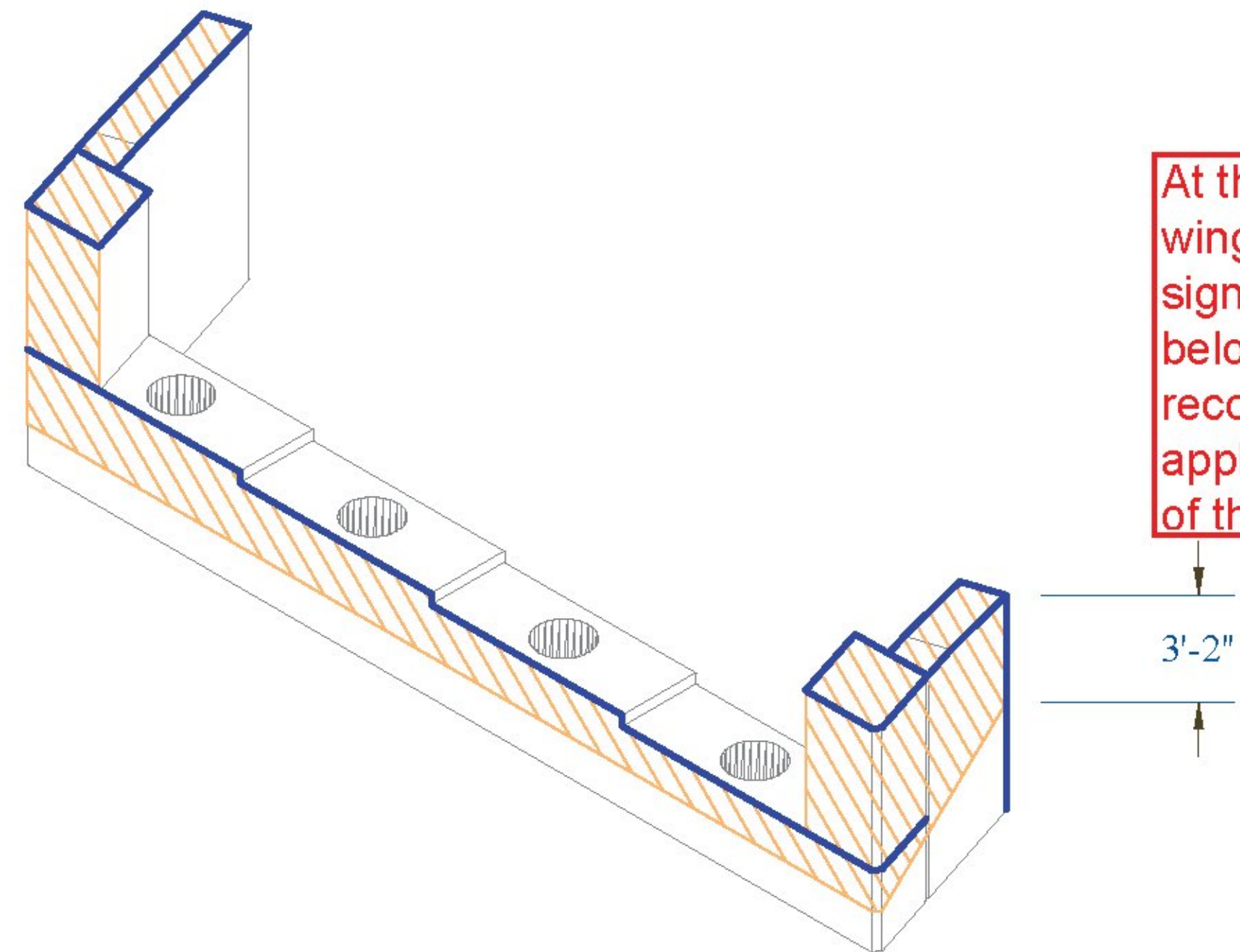
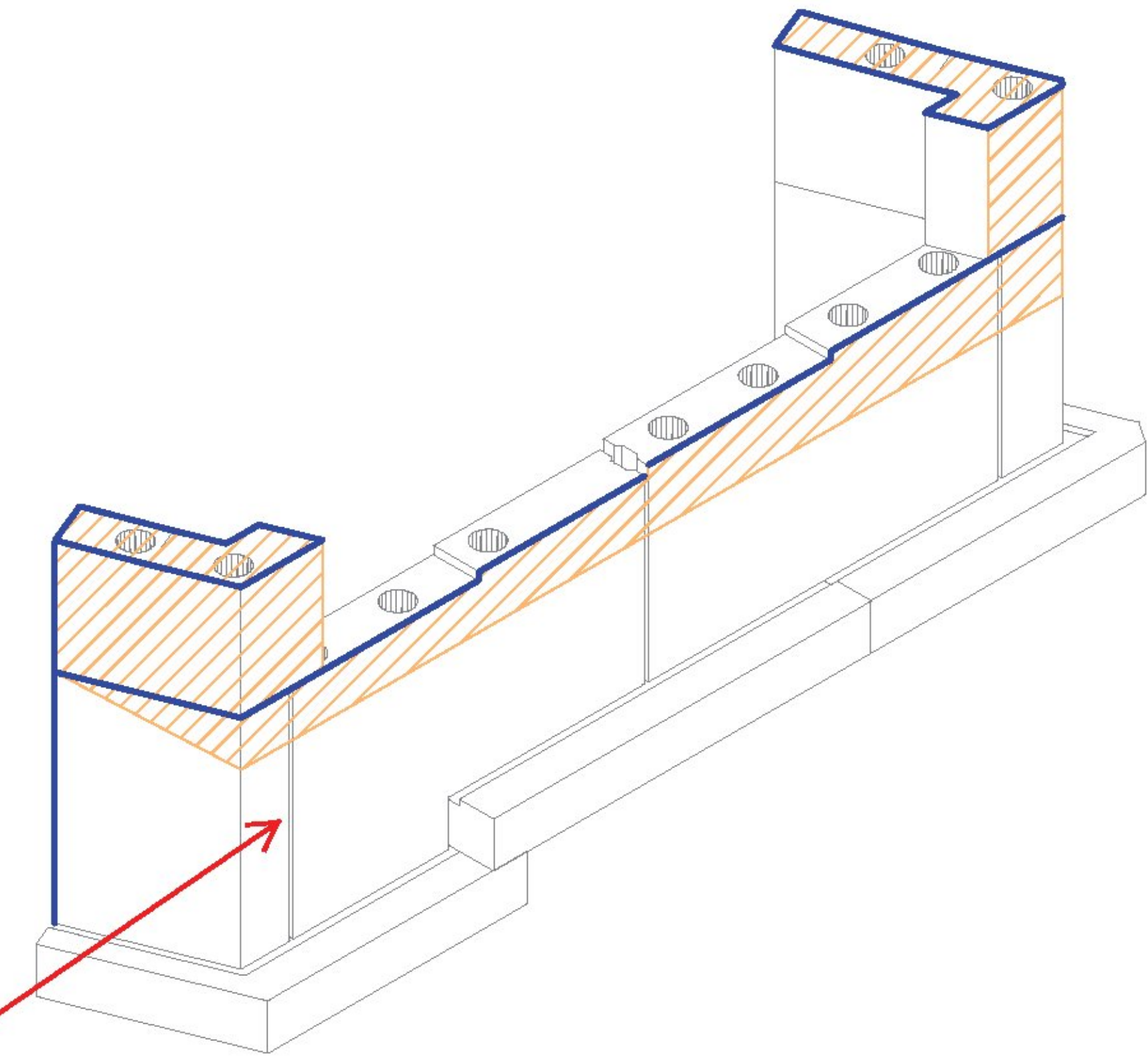
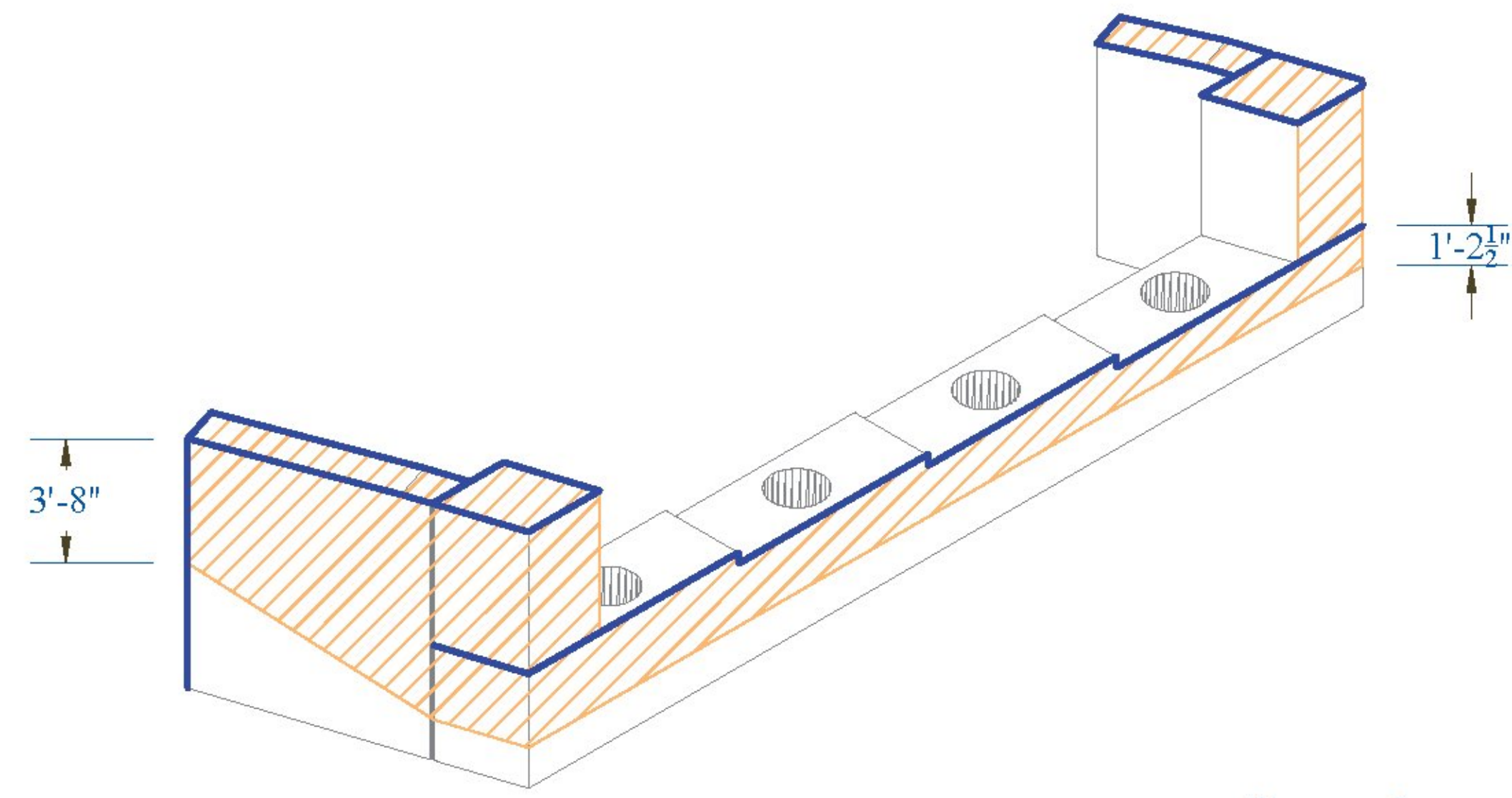


Abutment 1: Sealer & Chamfer Detail

Abutment 2: Sealer & Chamfer Detail



Legend:

- Indicates Areas to be Sealed with Silane Sealer
- Indicates ①

At this end of the abutment and wingwall #3, the grade will be significantly lower than 2'-0" below the bridge seat, recommend increasing this or applying silane on the entire face of the stem.

Vermont Agency of Transportation
RECEIVED
 CK'D BY _____ OK'D BY Rob Young
 April 21, 2017
 RESUBMIT NO Approved AsNoted
 BY Rob Young DATE 04/28/2017

CONTRACTORS VISPE:	LEGEND: A Oxford A750-7 D 3" Pipe G Ø 3" x 24" Plastic Corrugated Sleeve B P52:20T x 10" Lift E Ø 24" Galv. Corrugated Steel Pipe H P53 Lift w/ Tension Bar C 4" Pipe F Ø 15" Galv. Corrugated Steel Pipe I 1" Chamfer	PRECAST CONCRETE ABUTMENT SHOP DRAWINGS (SDI JOB #18544) SUPERVISOR: E. Barendse DETAILER: I. ADAMS CHECKER: E. Barendse ENGINEER: CONCRETE ENG. SOLUTIONS	PROJ. NAME: HUNTINGTON PROJECT #: BF 0211(32) LOCATION: HUNTINGTON, VT	INSTALLER: S.D. IRELAND CONCRETE WILLISTON, VT 05495 Ph: (802) 863-6222 04/20/17	FABRICATOR: 193 INDUSTRIAL AVE. WILLISTON, VT 05495 Ph: (802) 863-6222 SILANE_DETAIL		29/29
---------------------------	--	---	--	--	--	--	-------