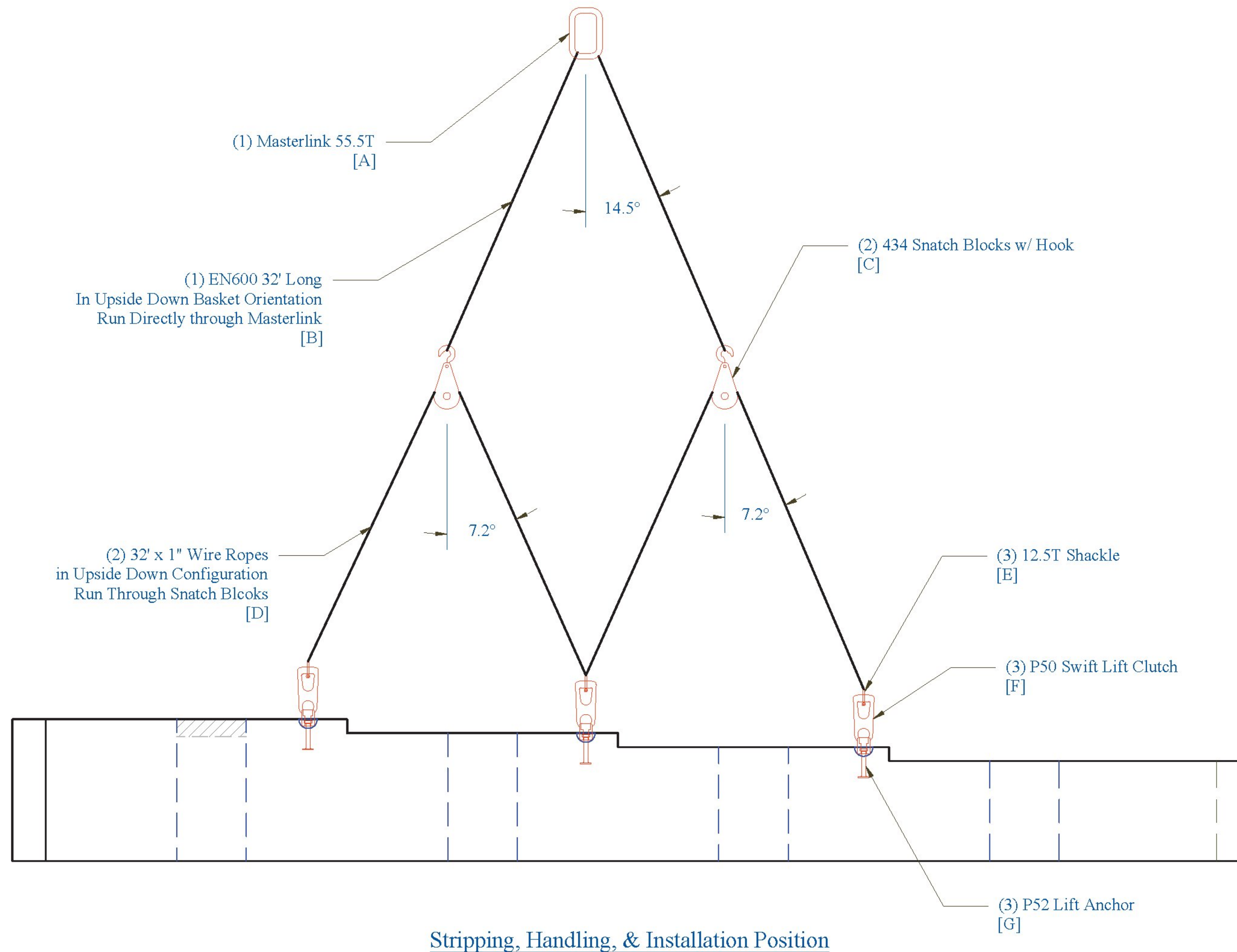


Abutment 1: Lifting & Handling



Abutment 1 Lifting Details		
Mark	Rated Capacity (lbs)	Applied Capacity (lbs)
A	111,000	46,960
B	106,000	46,960
C	60,000	23,480
D	40,000	23,480
E	25,000	15,653
F	40,000	15,653
G	40,000	15,653

Note: Applied capacity based upon piece weight of 46,960 lbs.  
\*See Lifting Calculations

Vermont Agency of Transportation  
**RECEIVED**  
CK'D BY \_\_\_\_\_ OK'D BY Rob Young  
April 21, 2017  
RESUBMIT NO \_\_\_\_\_ Approved AsNoted  
BY Rob Young DATE 04/28/2017

CONTRACTORS VISPE:	<b>LEGEND:</b> A Oxford A750-7      D 3" Pipe      G Ø 3" x 24" Plastic Corrugated Sleeve B P52:20T x 10" Lift      E Ø 24" Galv. Corrugated Steel Pipe      H P53 Lift w/ Tension Bar C 4" Pipe      F Ø 15" Galv. Corrugated Steel Pipe      I 1" Chamfer	PRECAST CONCRETE ABUTMENT SHOP DRAWINGS (SDI JOB #18544)		INSTALLER: S.D. IRELAND CONCRETE WILLISTON, VT 05495 Ph: (802) 863-6222	FABRICATOR: 193 INDUSTRIAL AVE. WILLISTON, VT 05495 Ph: (802) 863-6222
		SUPERVISOR: E. Barendse DETAILER: I. ADAMS CHECKER: E. Barendse ENGINEER: CONCRETE ENG. SOLUTIONS	PROJ. NAME: HUNTINGTON PROJECT #: BF 0211(32) LOCATION: HUNTINGTON, VT	04/20/17	ABUTMENT_1_LIFTING

