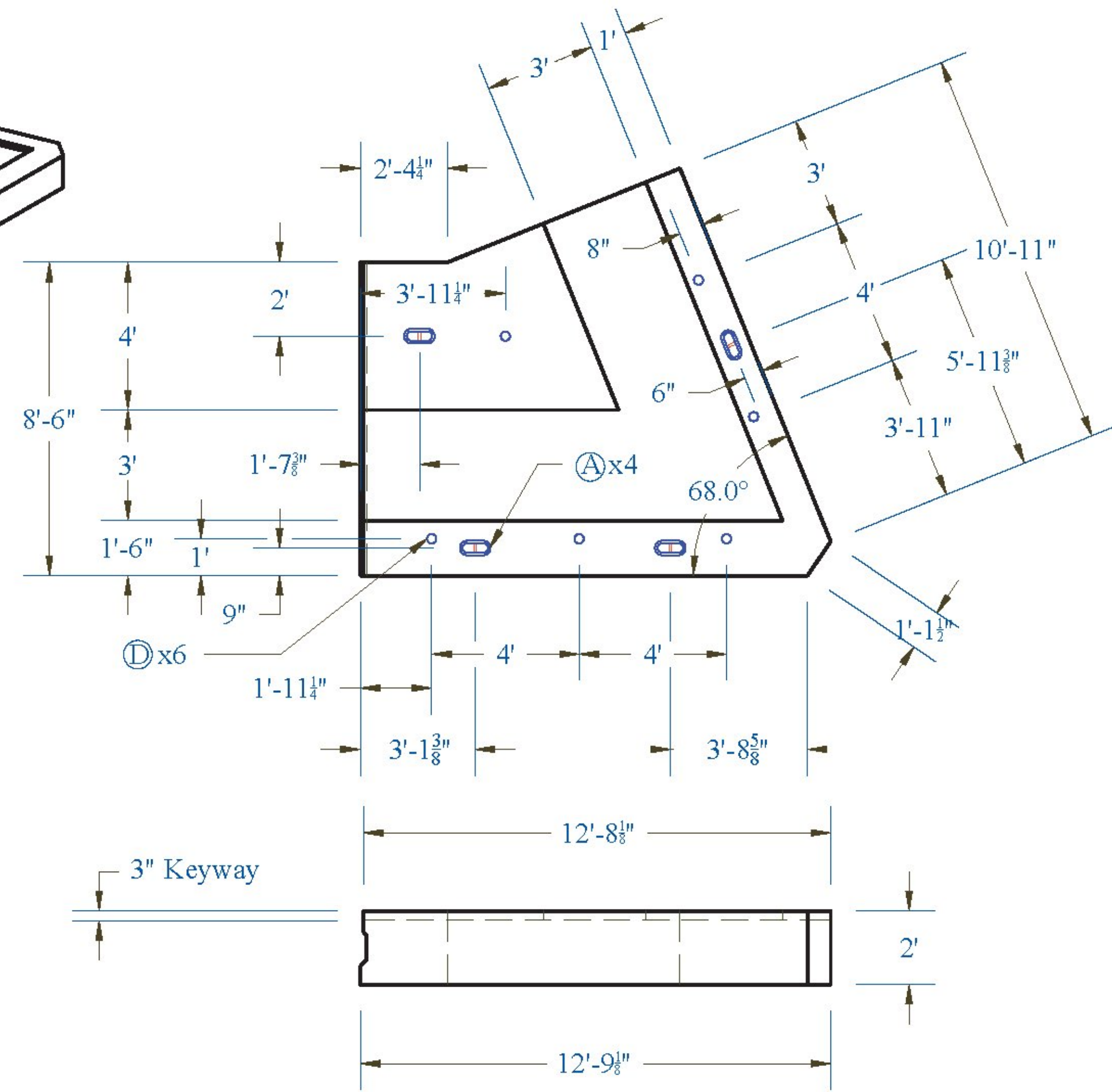
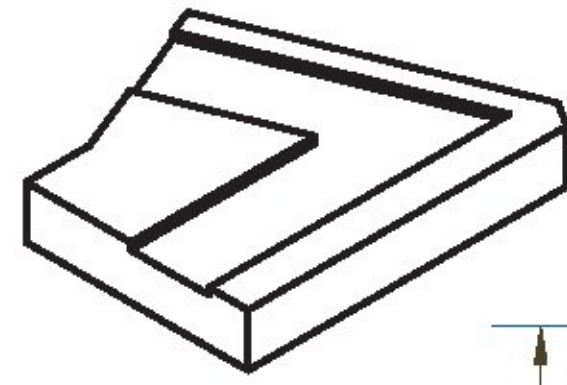
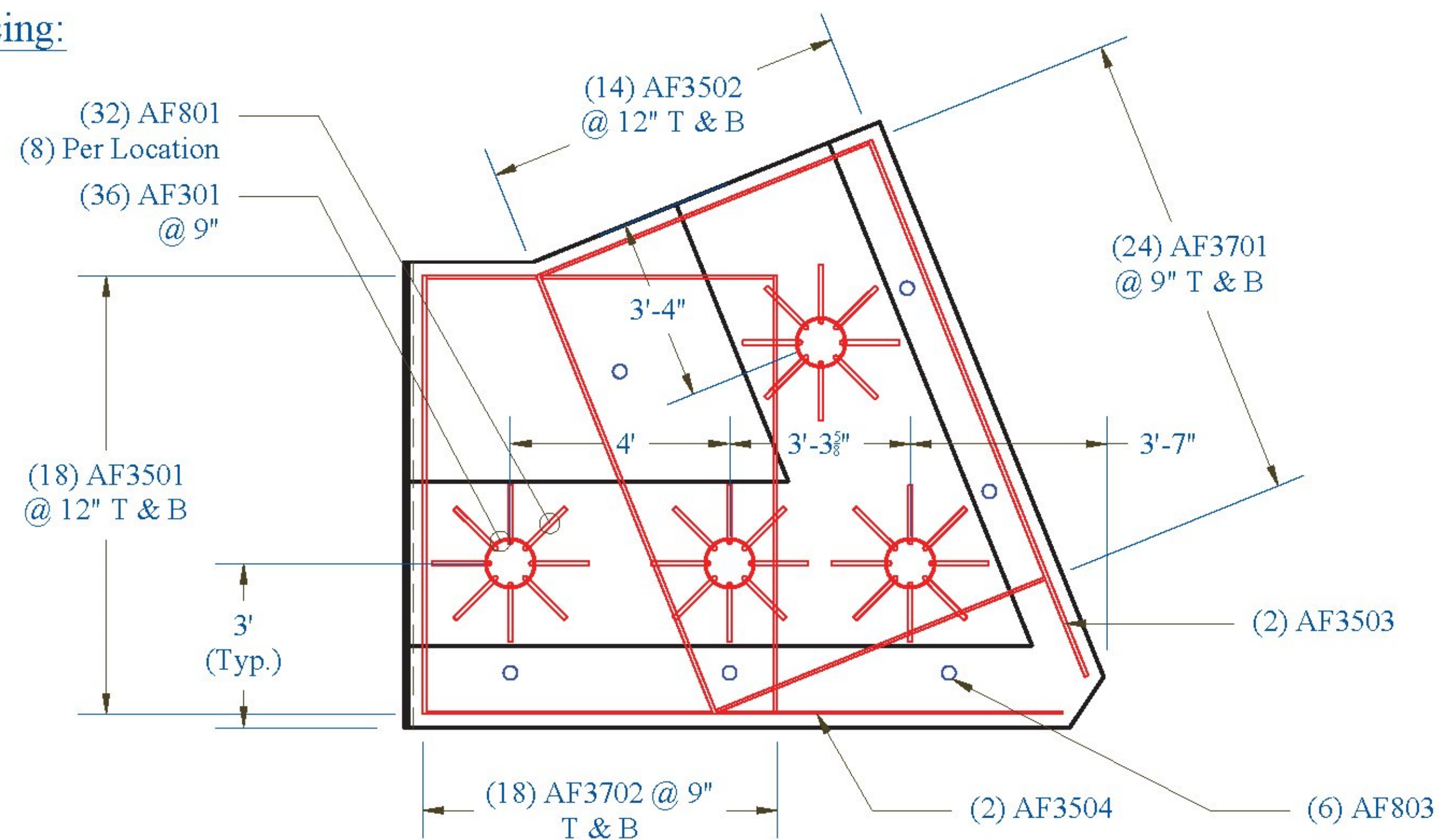


Footing 3:

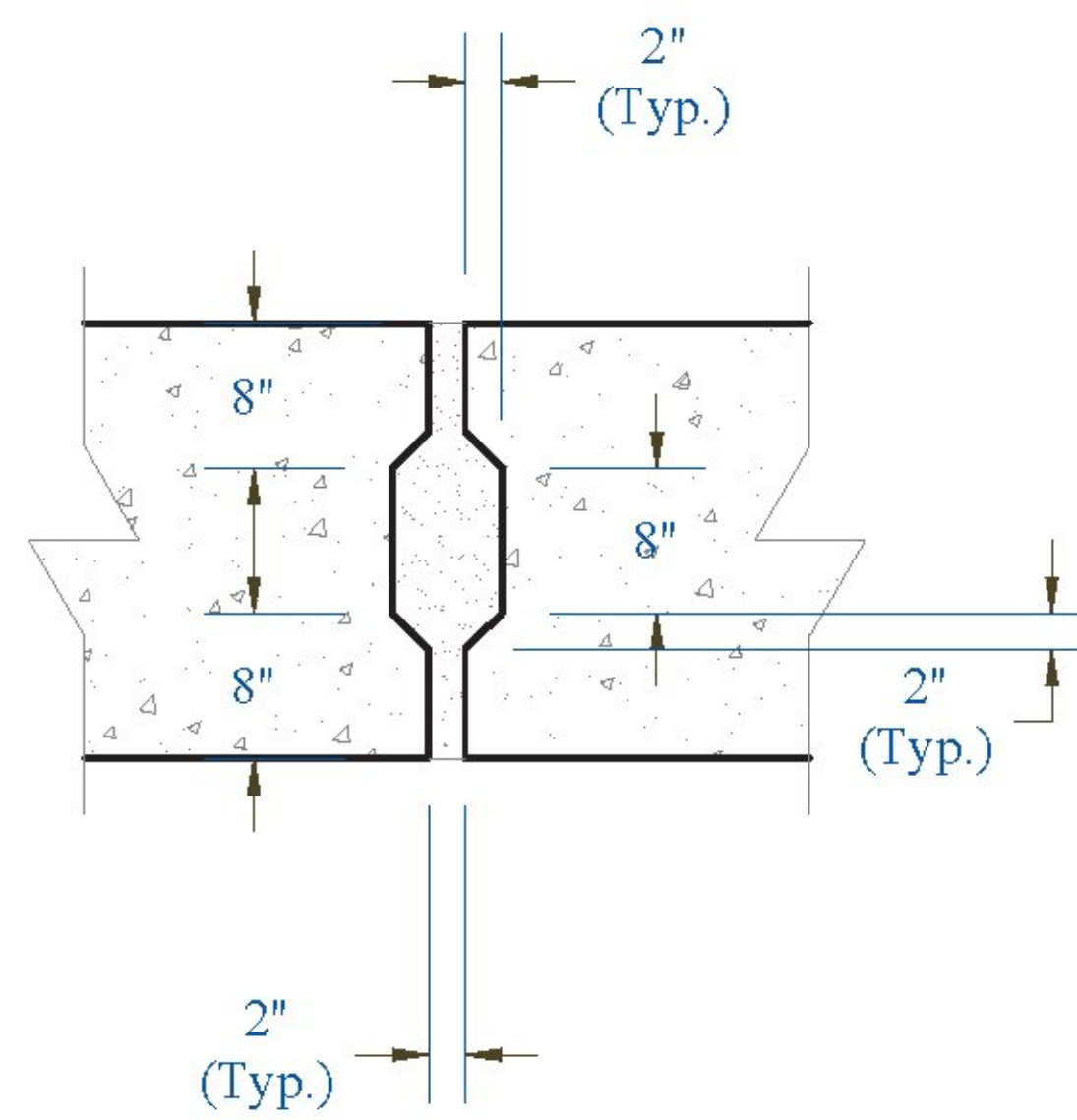
Weight: 29,680 lbs



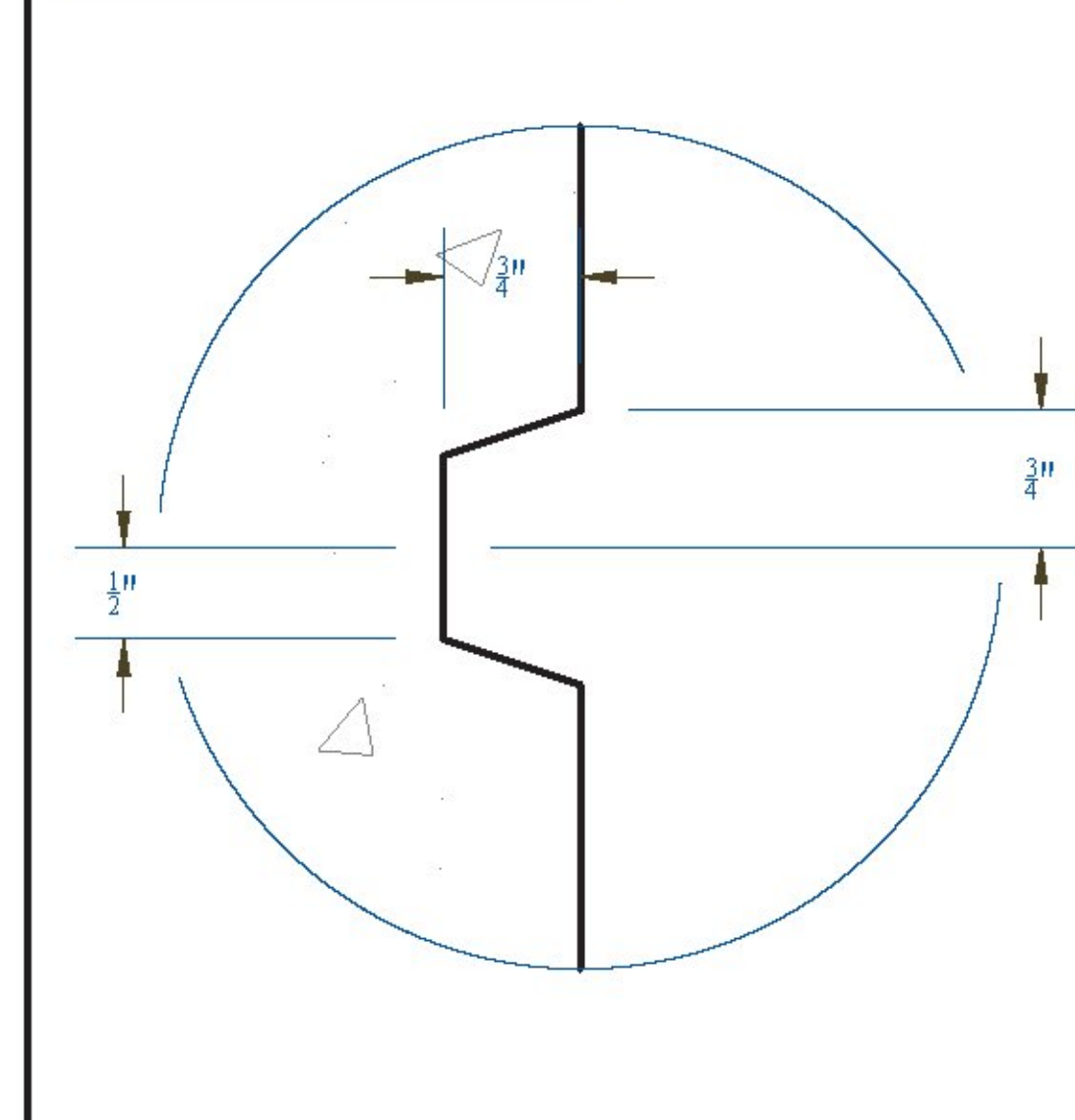
Reinforcing:



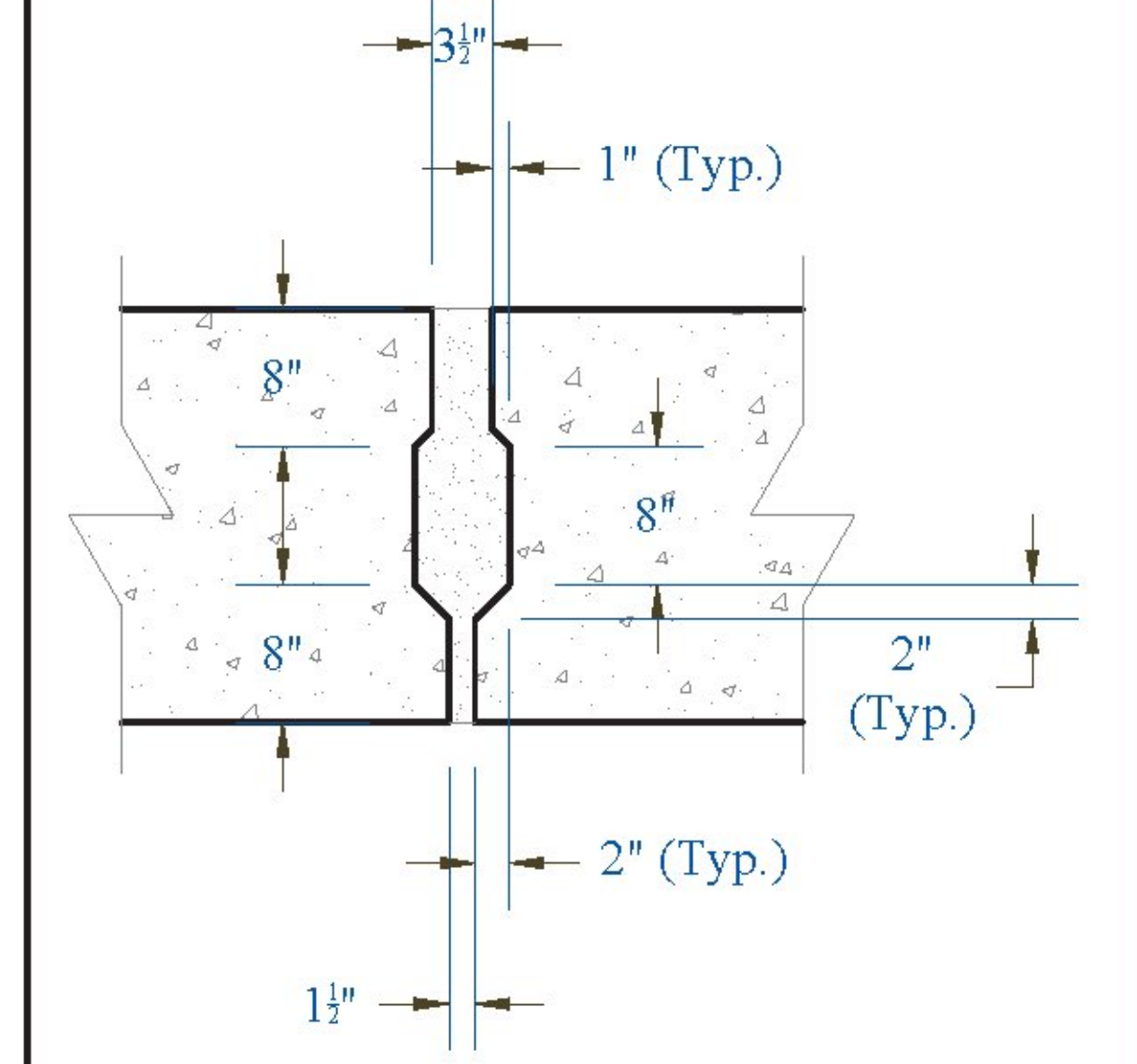
Abutment 2 Shear Key: Plan View



Score Mark Detail:

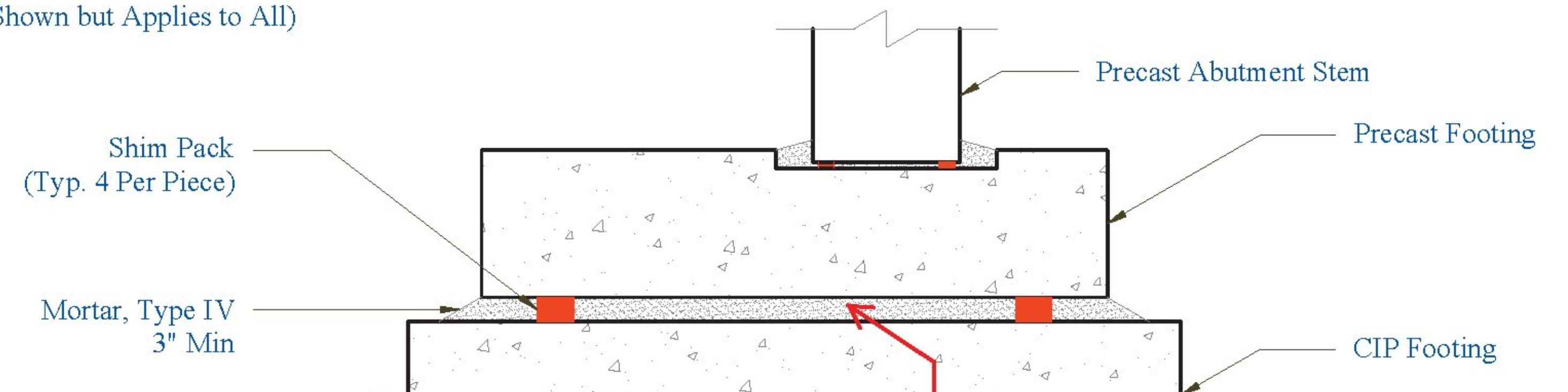


Footing Shear Key: Section View



Footing Shim Detail: Section View

(Footing 2 Shown but Applies to All)

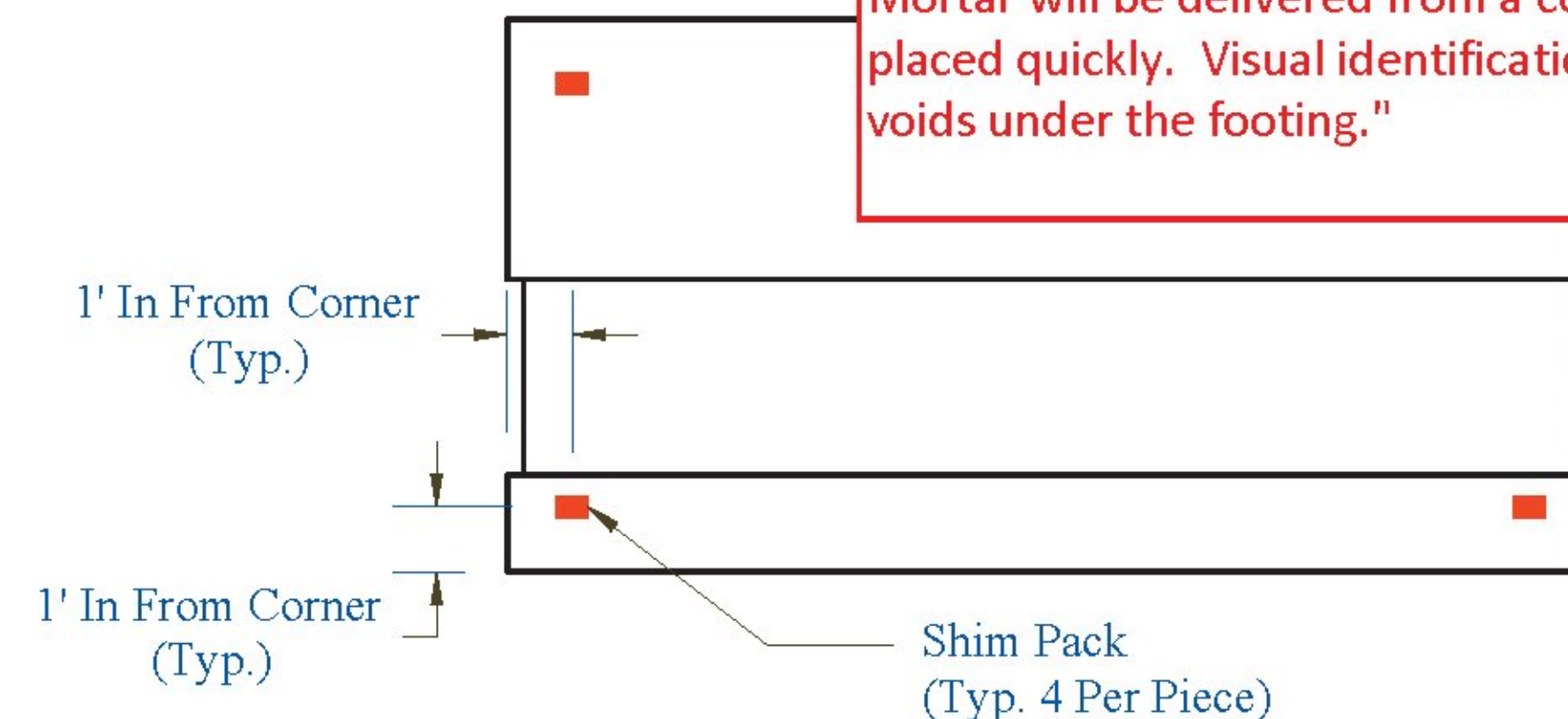


Vermont Agency of Transportation
RECEIVED
CK'D BY: Rob Young OK'D BY: Rob Young
April 21, 2017
RESUBMIT NO Approved AsNoted
BY Rob Young DATE 04/28/2017

Per email from Matt Wheeler on 4/27/2017:
Q: "For the Abutment No. 2 footing, shims are shown instead of leveling bolts. We're interested in the planned method for placement of the grout under the footing so that the intended grout thickness is achieved."
A: "Shims will be placed on the CIP footing and checked to ensure the elevation of the top of the shims are equal for setting the precast footing piece. Type IV Mortar is then placed with an intended "wet" thickness of 1/2" above the shim and cover the entire bed. The precast footing piece is then placed on the uncured mortar. The excess half inch will squeeze out of the edges and ensure that total contact is made. The Mortar will be delivered from a concrete plant via a truck and pumped if necessary to ensure that it is placed quickly. Visual identification of solid contact is made if all of the 3" tubes in the footing indicate no voids under the footing."

Footing Shim Detail: Plan View

(Footing 2 Shown but Applies to All)



∴ Shim Compressive Capacity	240,000 lbs
∴ (4x) Shim Compressive Capacity	960,000 lbs
Heaviest Footing Weight	40,320 lbs
	960,000 lbs > 40,320 lbs ✓

Note: Additional shims to be used as needed for leveling purposes.

CONTRACTORS VISPE:

LEGEND:

(A) Oxford A750-7	(D) 3" Pipe	(G) 3" x 24" Plastic Corrugated Sleeve
(B) P52:20T x 10" Lift	(E) 24" Galv. Corrugated Steel Pipe	(H) P53 Lift w/ Tension Bar
(C) 4" Pipe	(F) 15" Galv. Corrugated Steel Pipe	(I) 1" Chamfer

PRECAST CONCRETE ABUTMENT SHOP DRAWINGS (SDI JOB #18544)

SUPERVISOR: E. Barendse	PROJ. NAME: HUNTINGTON	INSTALLER: S.D. IRELAND CONCRETE	FABRICATOR: 193 INDUSTRIAL AVE.
DETAILER: I. ADAMS	PROJECT #: BF 0211(32)	WILLISTON, VT 05495	WILLISTON, VT 05495
CHECKER: E. Barendse	LOCATION: HUNTINGTON, VT	Ph: (802) 863-6222	Ph: (802) 863-6222
ENGINEER: CONCRETE ENG. SOLUTIONS		04/20/17	ABUTMENT_FOOTING_3_&_MISC_DETAILS

SD Ireland PRECAST