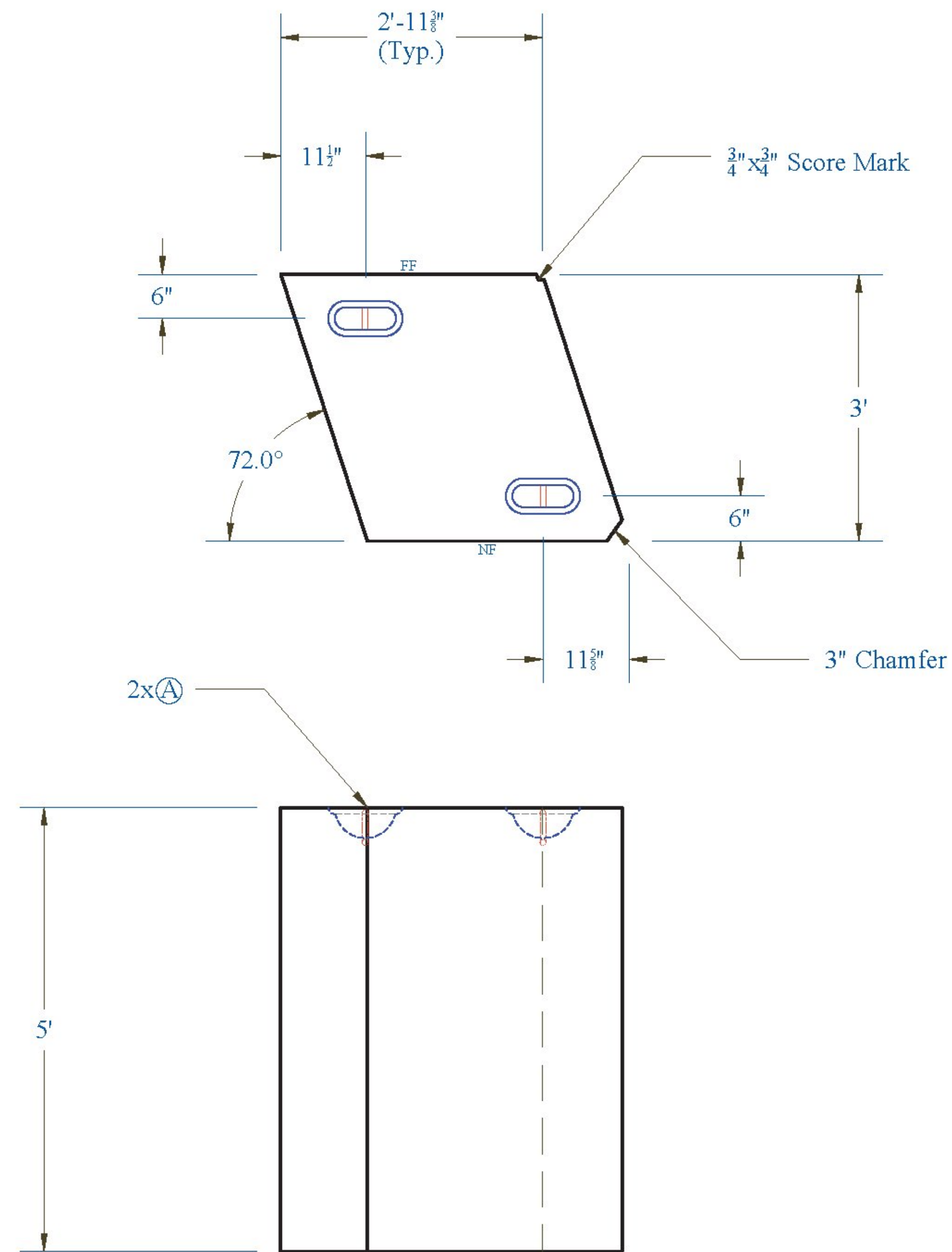
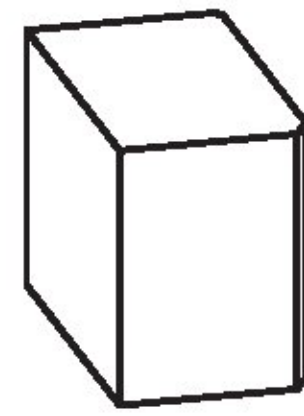
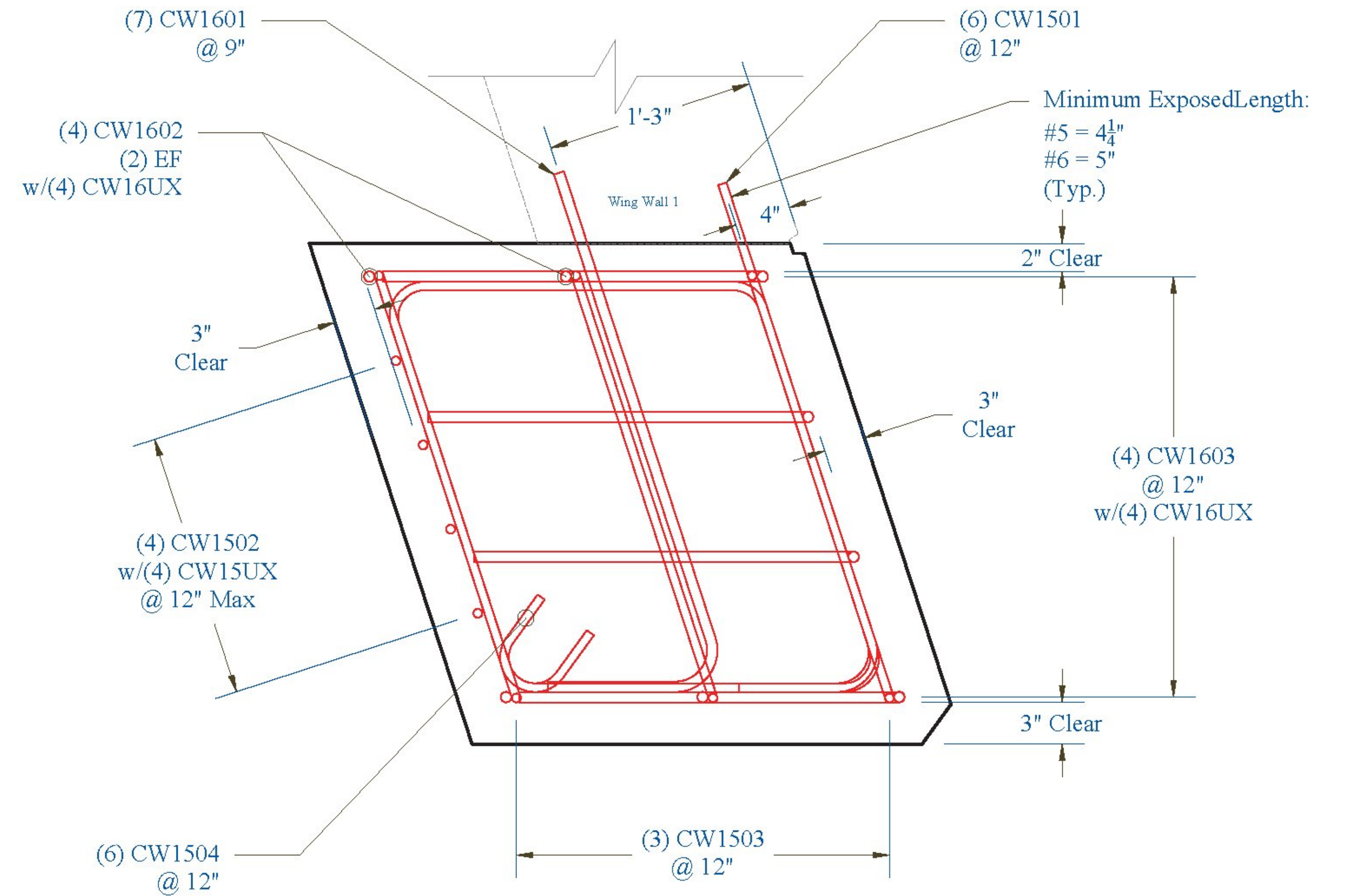


**Cheekwall 1:**

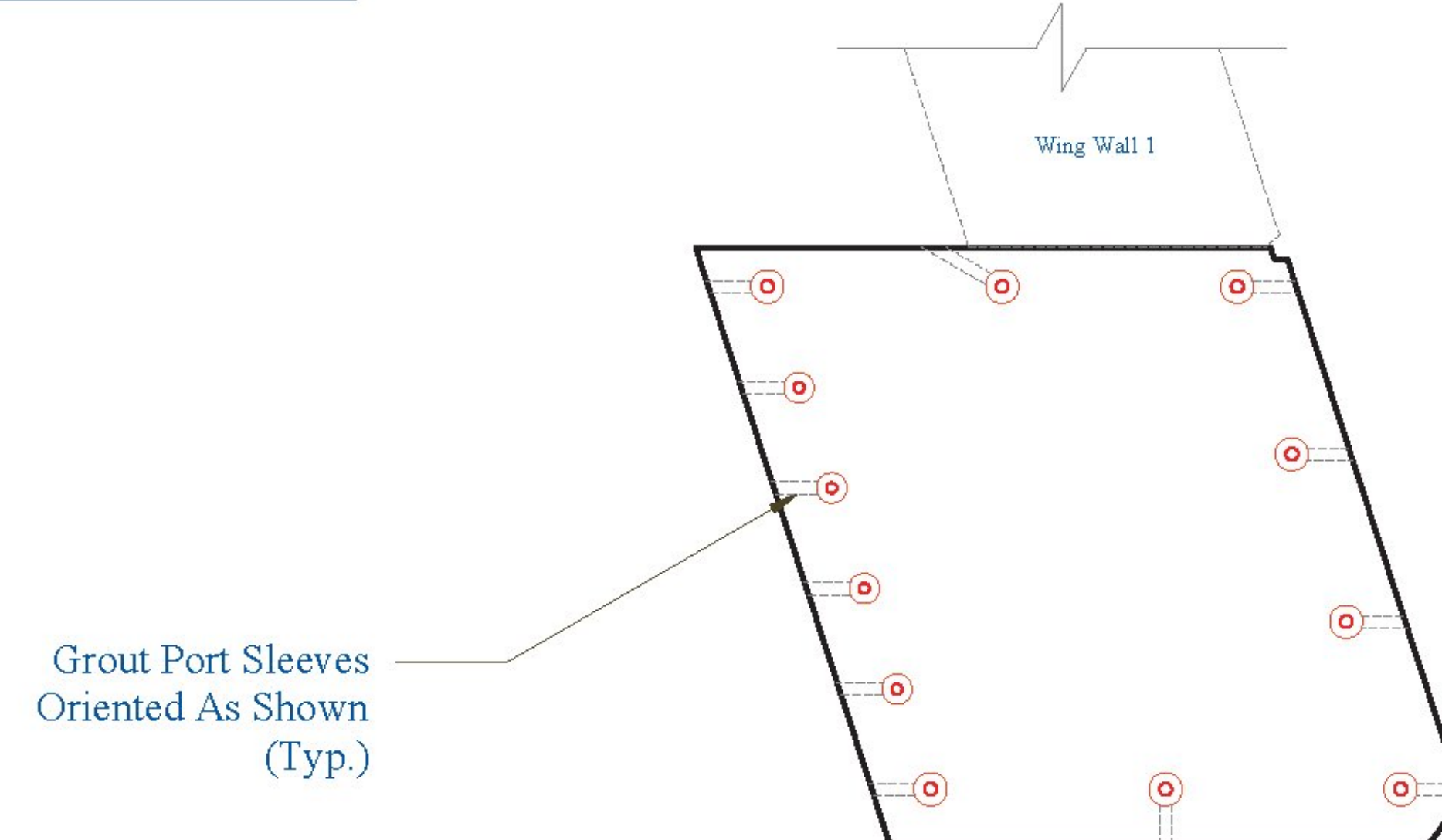
Weight: 6,520 lbs



**Reinforcing:**



**Grout Ports Orientation:**



Vermont Agency of Transportation  
**RECEIVED**  
 CK'D BY \_\_\_\_\_ OK'D BY Rob Young  
 April 21, 2017  
 RESUBMIT NO \_\_\_\_\_ Approved AsNoted  
 BY Rob Young DATE 04/28/2017

**CONTRACTORS VISPE:**

**LEGEND:**

- (A) Oxford A750-7      (D) 3" Pipe      (G) Ø 3" x 24" Plastic Corrugated Sleeve
- (B) P52:20T x 10" Lift      (E) Ø 24" Galv. Corrugated Steel Pipe      (H) P53 Lift w/ Tension Bar
- (C) 4" Pipe      (F) Ø 15" Galv. Corrugated Steel Pipe      (I) 1" Chamfer

**PRECAST CONCRETE ABUTMENT SHOP DRAWINGS (SDI JOB #18544)**

SUPERVISOR: E. Barendse  
 DETAILER: I. ADAMS  
 CHECKER: E. Barendse  
 ENGINEER: CONCRETE ENG. SOLUTIONS

PROJ. NAME: HUNTINGTON  
 PROJECT #: BF 0211(32)  
 LOCATION: HUNTINGTON, VT

INSTALLER:  
 S.D. IRELAND CONCRETE  
 WILLISTON, VT 05495  
 Ph: (802) 863-6222

FABRICATOR:  
 193 INDUSTRIAL AVE.  
 WILLISTON, VT 05495  
 Ph: (802) 863-6222



04/20/17

CHEEKWALL\_1

10/29