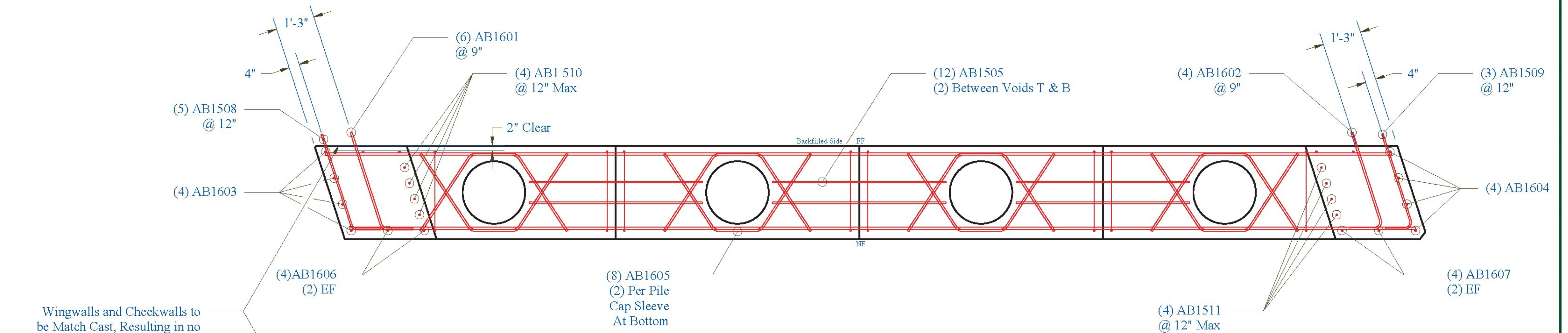
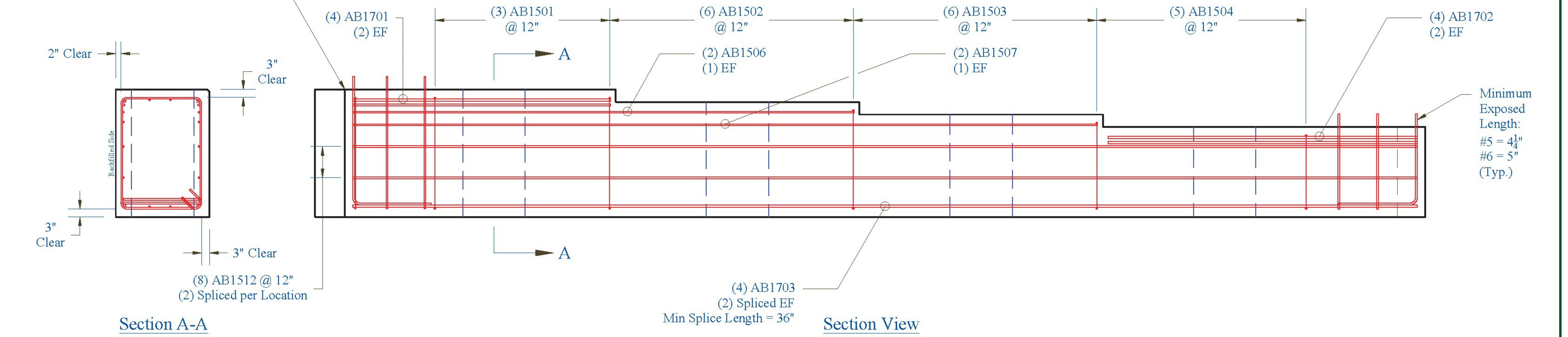


Abutment 1 Stem: Reinforcing



Plan View

Wingwalls and Cheekwalls to be Match Cast, Resulting in no Need to be Grouted. Site Contractor to Apply Vtrans Approved Polyethylene Caulk to Joint. No Backer Rod Needed.



Section View

Section A-A

Vermont Agency of Transportation
RECEIVED
 CK'D BY _____ OK'D BY Rob Young
 April 21, 2017
 RESUBMIT NO _____ Approved AsNoted
 BY Rob Young DATE 04/28/2017

CONTRACTORS VISPE:	LEGEND: (A) Oxford A750-7 (D) 3" Pipe (G) Ø 3" x 24" Plastic Corrugated Sleeve (B) P52:20T x 10" Lift (E) Ø 24" Galv. Corrugated Steel Pipe (H) P53 Lift w/ Tension Bar (C) 4" Pipe (F) Ø 15" Galv. Corrugated Steel Pipe (I) 1" Chamfer	PRECAST CONCRETE ABUTMENT SHOP DRAWINGS (SDI JOB #18544)		INSTALLER: S.D. IRELAND CONCRETE WILLISTON, VT 05495 Ph: (802) 863-6222	FABRICATOR: 193 INDUSTRIAL AVE. WILLISTON, VT 05495 Ph: (802) 863-6222
		SUPERVISOR: E. Barendse DETAILER: I. ADAMS CHECKER: E. Barendse ENGINEER: CONCRETE ENG. SOLUTIONS	PROJ. NAME: HUNTINGTON PROJECT #: BF 0211(32) LOCATION: HUNTINGTON, VT	04/20/17	ABUTMENT_1_STEM_REINFORCING

