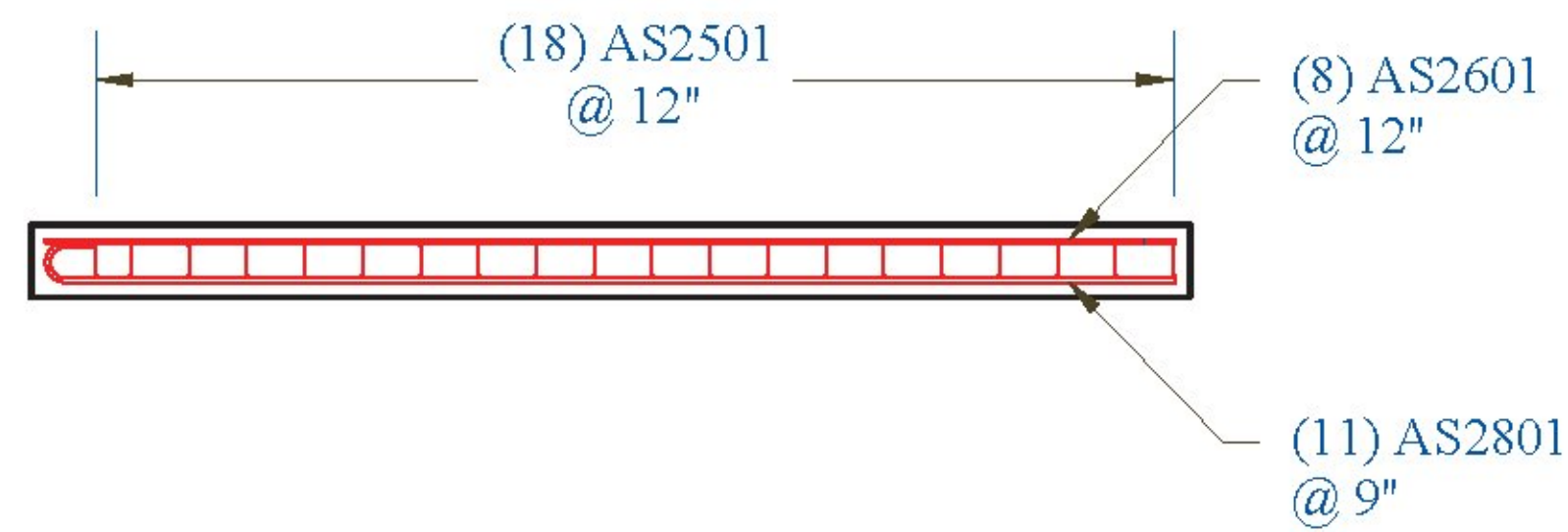
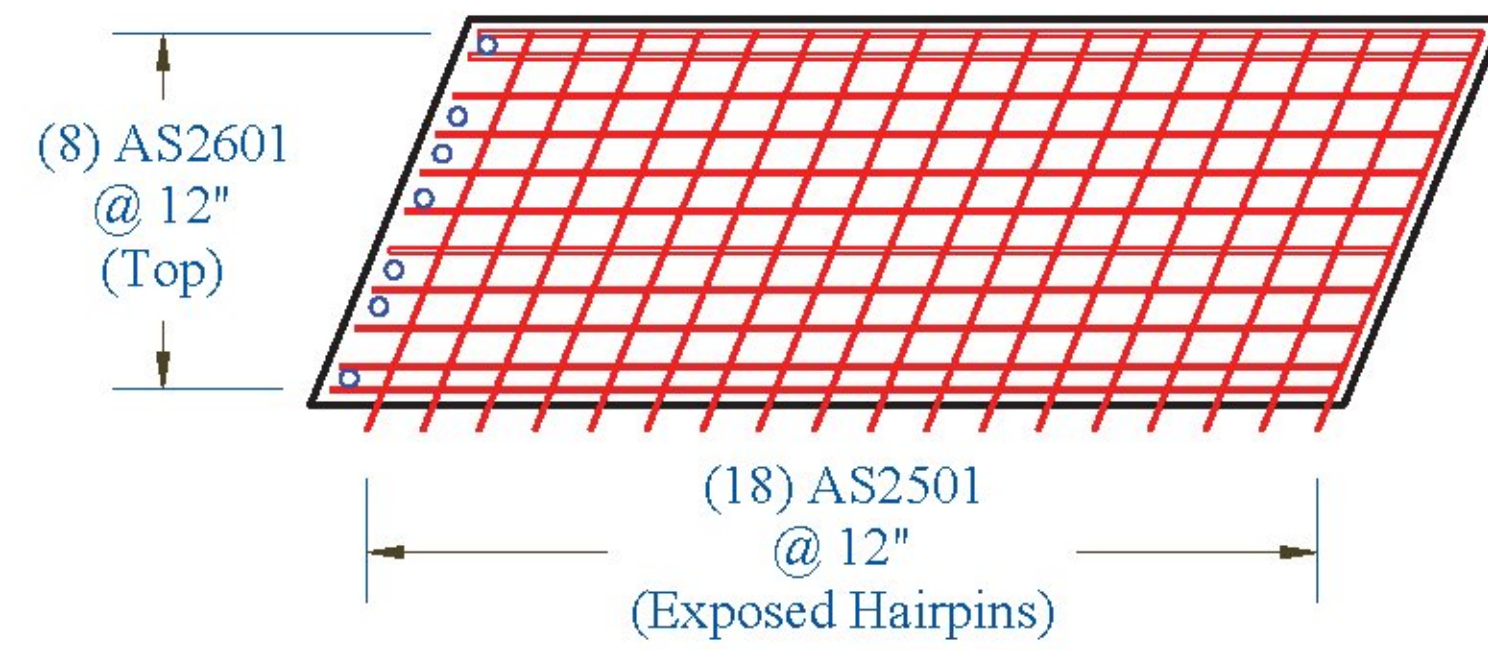


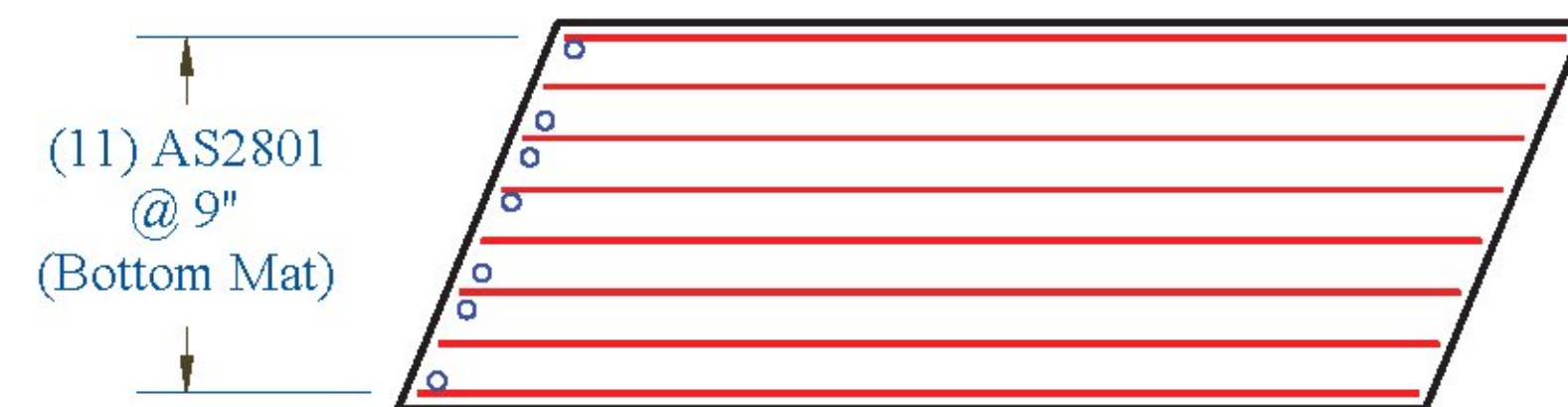
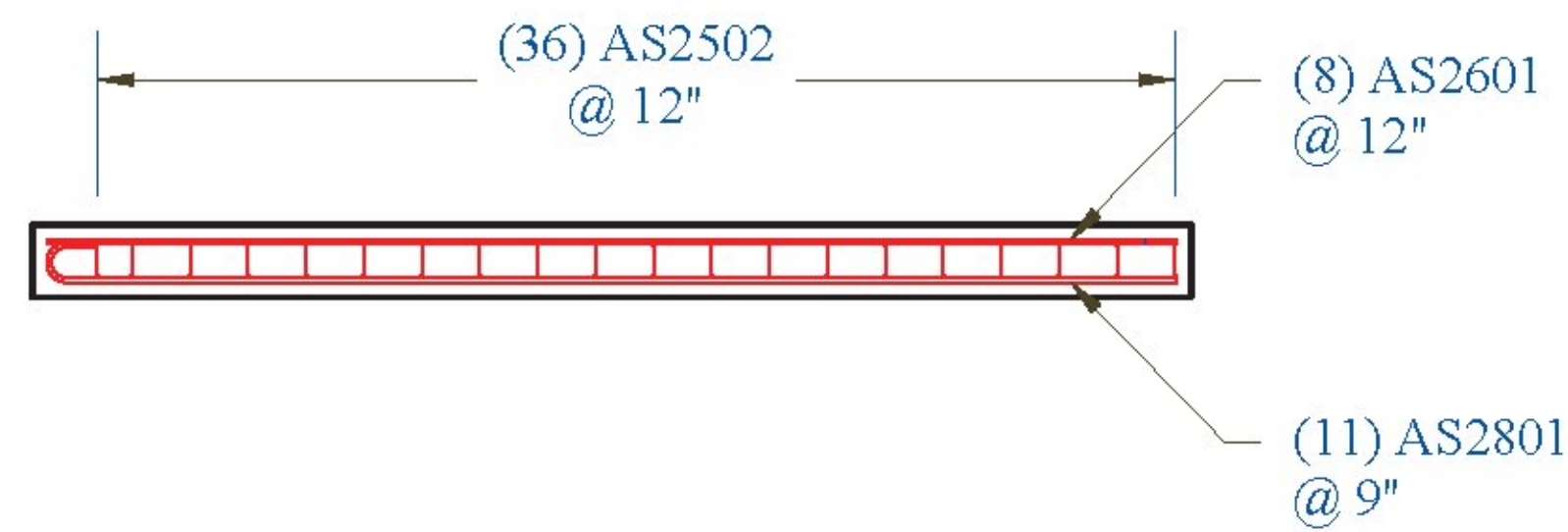
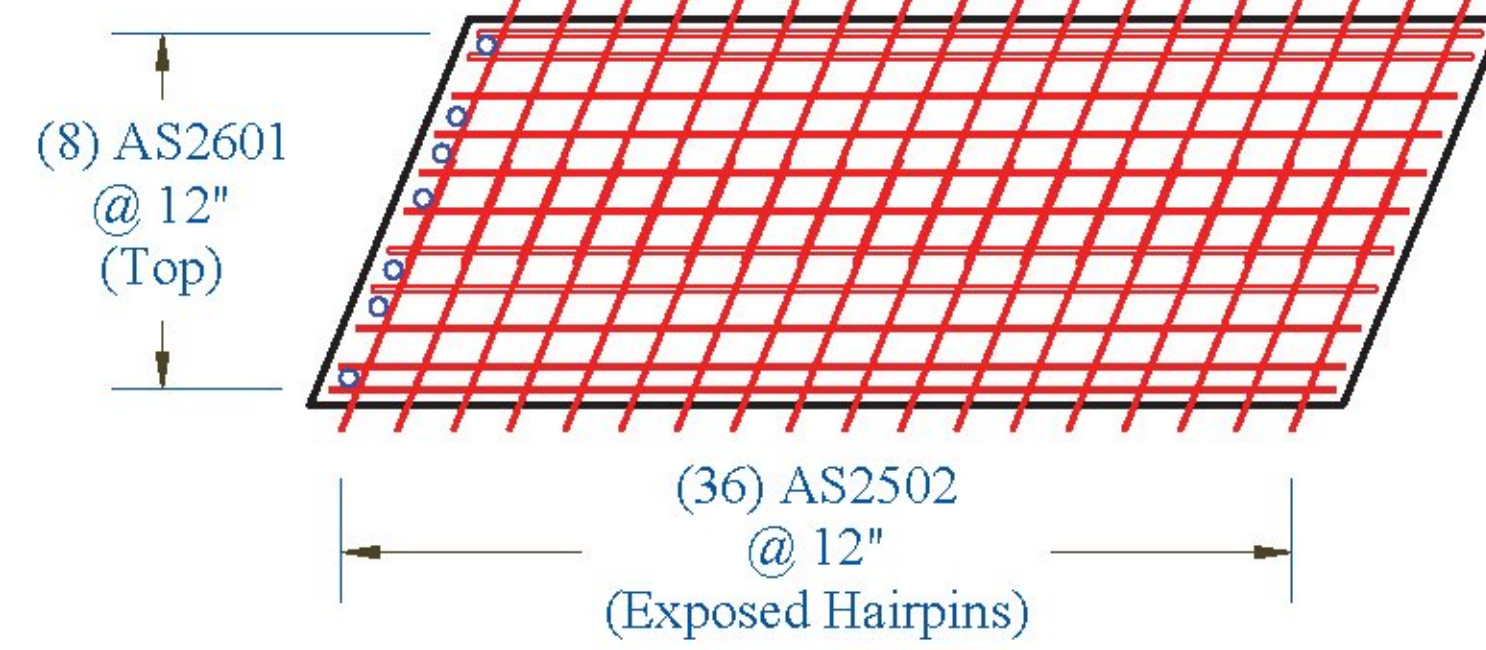
Approach Slab 2A: Reinforcing

Note: • Reinforcing 3" Clear from All Faces
• See Sheet 21 for Closure Pour Detail



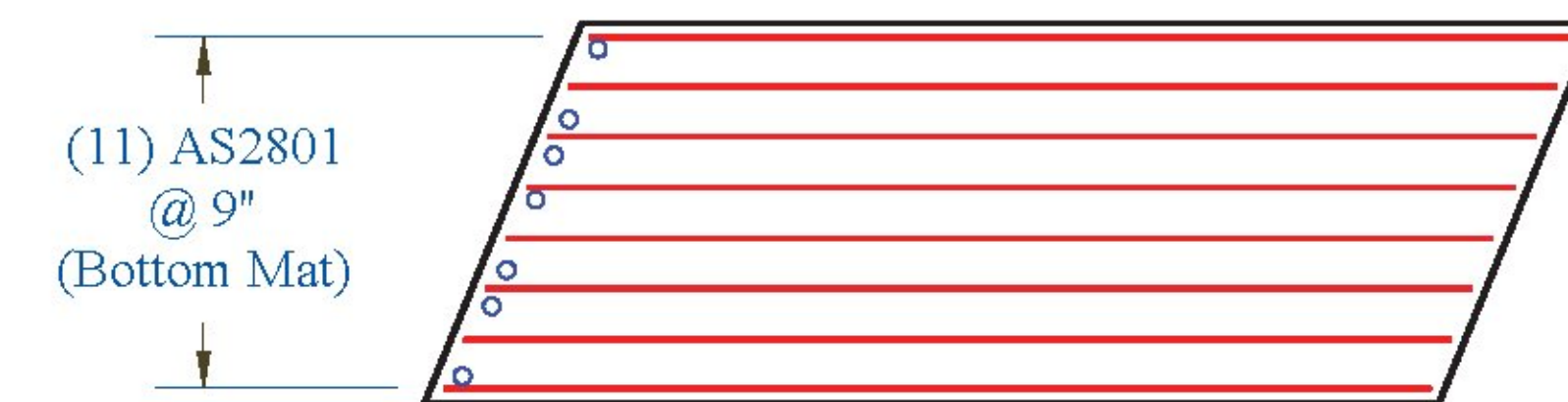
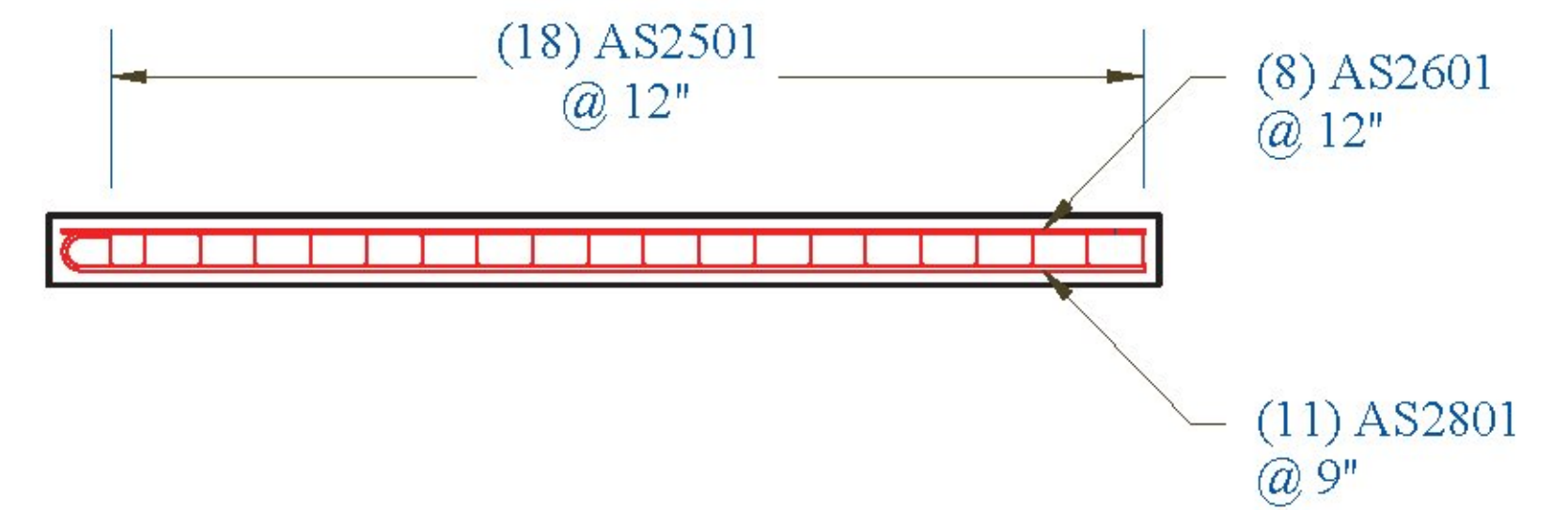
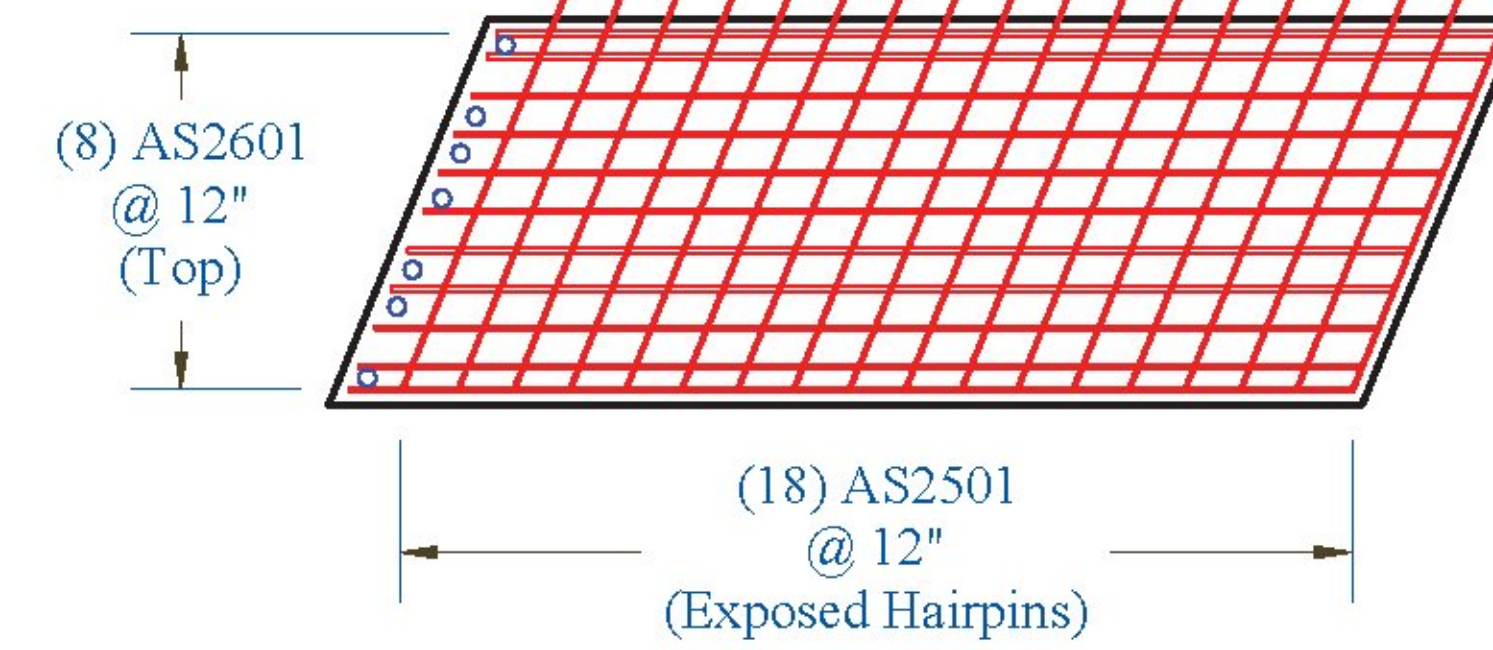
Approach Slab 2B: Reinforcing

Note: • Reinforcing 3" Clear from All Faces
• See Sheet 21 for Closure Pour Detail



Approach Slab 2C: Reinforcing

Note: • Reinforcing 3" Clear from All Faces
• See Sheet 21 for Closure Pour Detail



Vermont Agency of Transportation
RECEIVED
CK'D BY _____ OK'D BY Rob Young
April 21, 2017
RESUBMIT NO _____ Approved AsNoted
BY Rob Young DATE 04/28/2017

CONTRACTORS VISPE:	LEGEND: (A) Oxford A750-7 (D) 3" Pipe (G) Ø 3" x 24" Plastic Corrugated Sleeve (B) P52:20T x 10" Lift (E) Ø 24" Galv. Corrugated Steel Pipe (H) P53 Lift w/ Tension Bar (C) 4" Pipe (F) Ø 15" Galv. Corrugated Steel Pipe (I) 1" Chamfer	PRECAST CONCRETE ABUTMENT SHOP DRAWINGS (SDI JOB #18544)		INSTALLER: S.D. IRELAND CONCRETE WILLISTON, VT 05495 Ph: (802) 863-6222	FABRICATOR: 193 INDUSTRIAL AVE. WILLISTON, VT 05495 Ph: (802) 863-6222
		SUPERVISOR: E. Barendse DETAILER: I. ADAMS CHECKER: E. Barendse ENGINEER: CONCRETE ENG. SOLUTIONS	PROJ. NAME: HUNTINGTON PROJECT #: BF 0211(32) LOCATION: HUNTINGTON, VT	04/20/17	APPROACH_SLAB_2_REINFORCING

