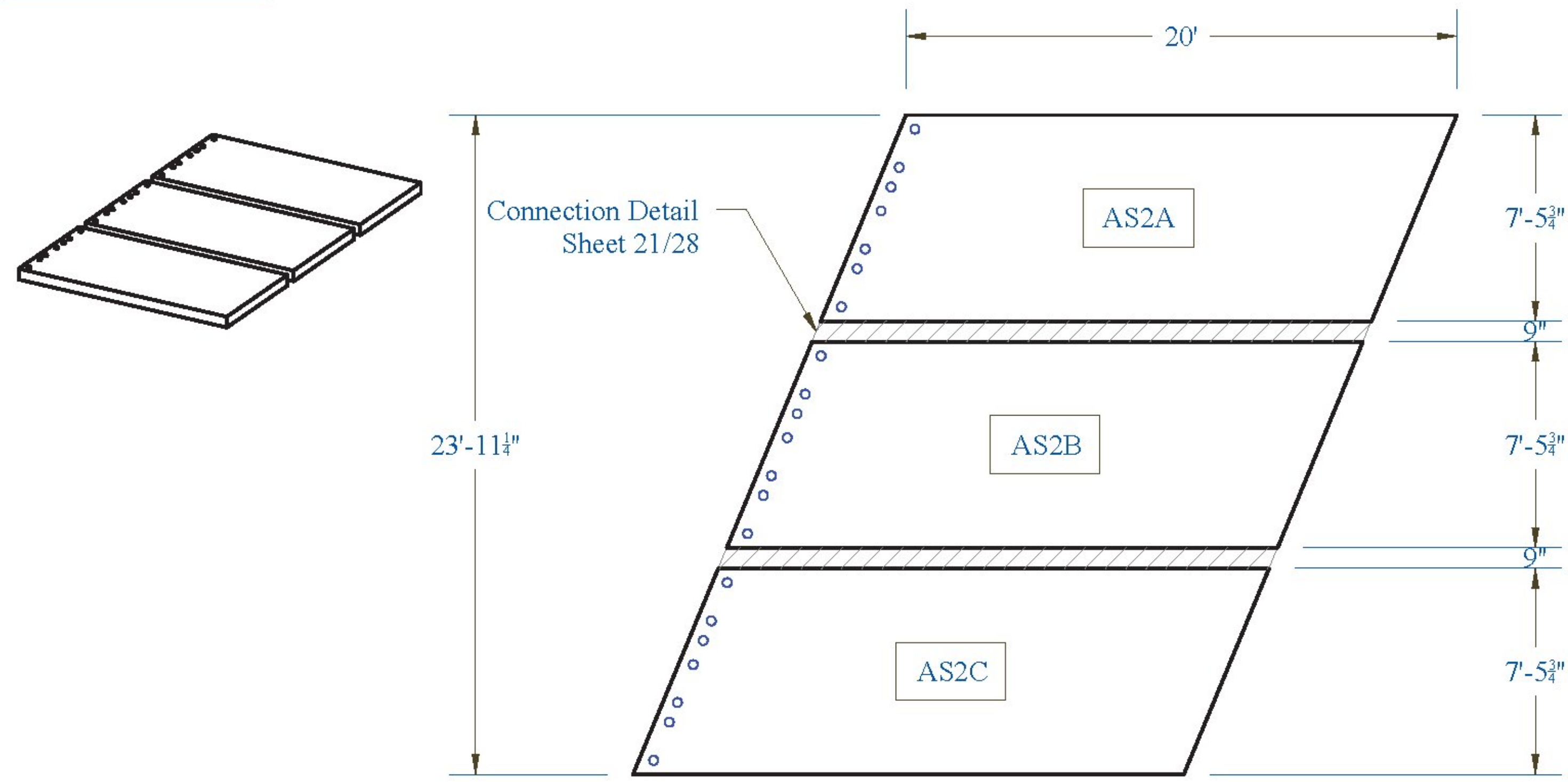
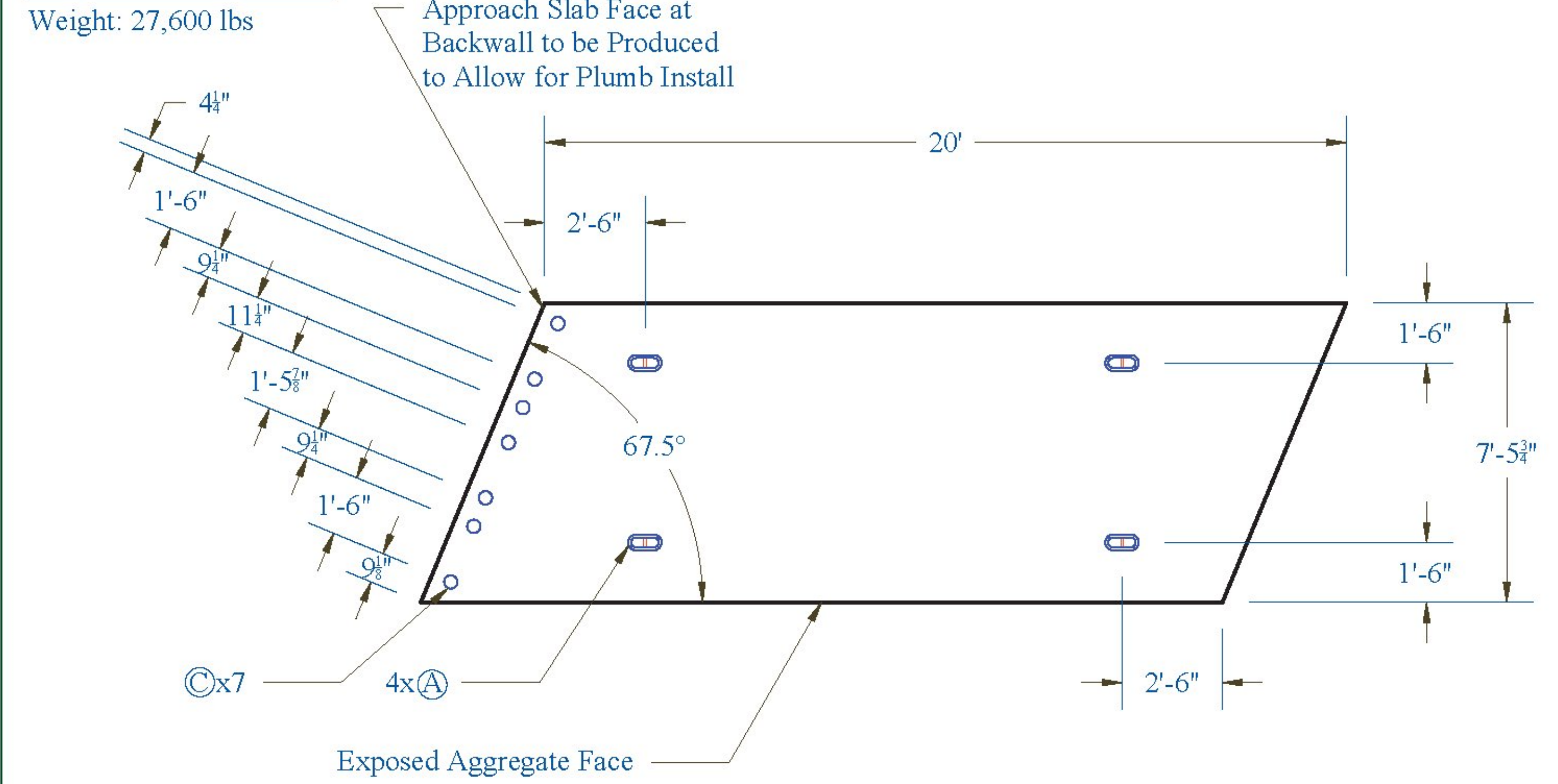


Approach Slab 2:

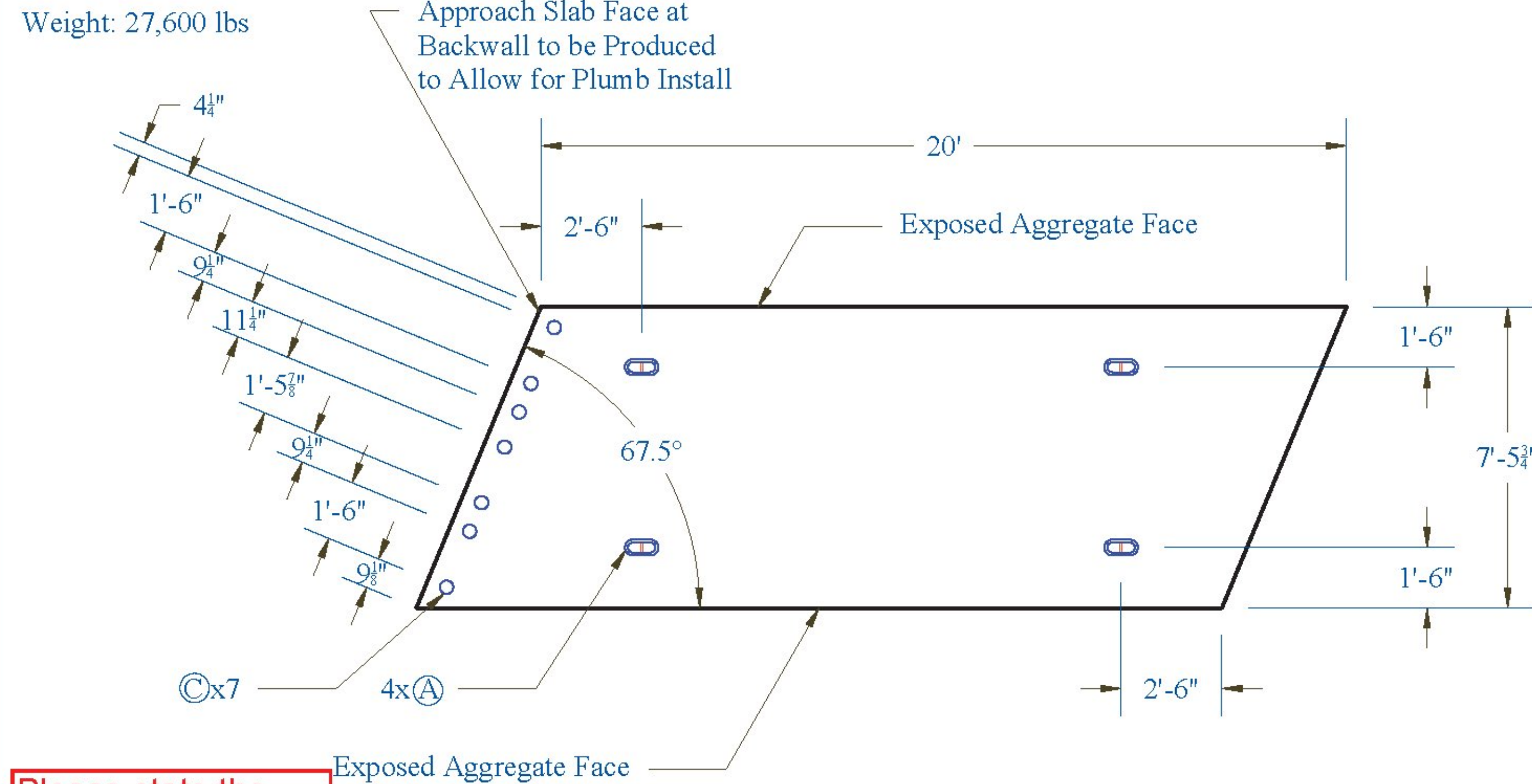


Approach Slab 2A:



Note: 15" Thick Slab

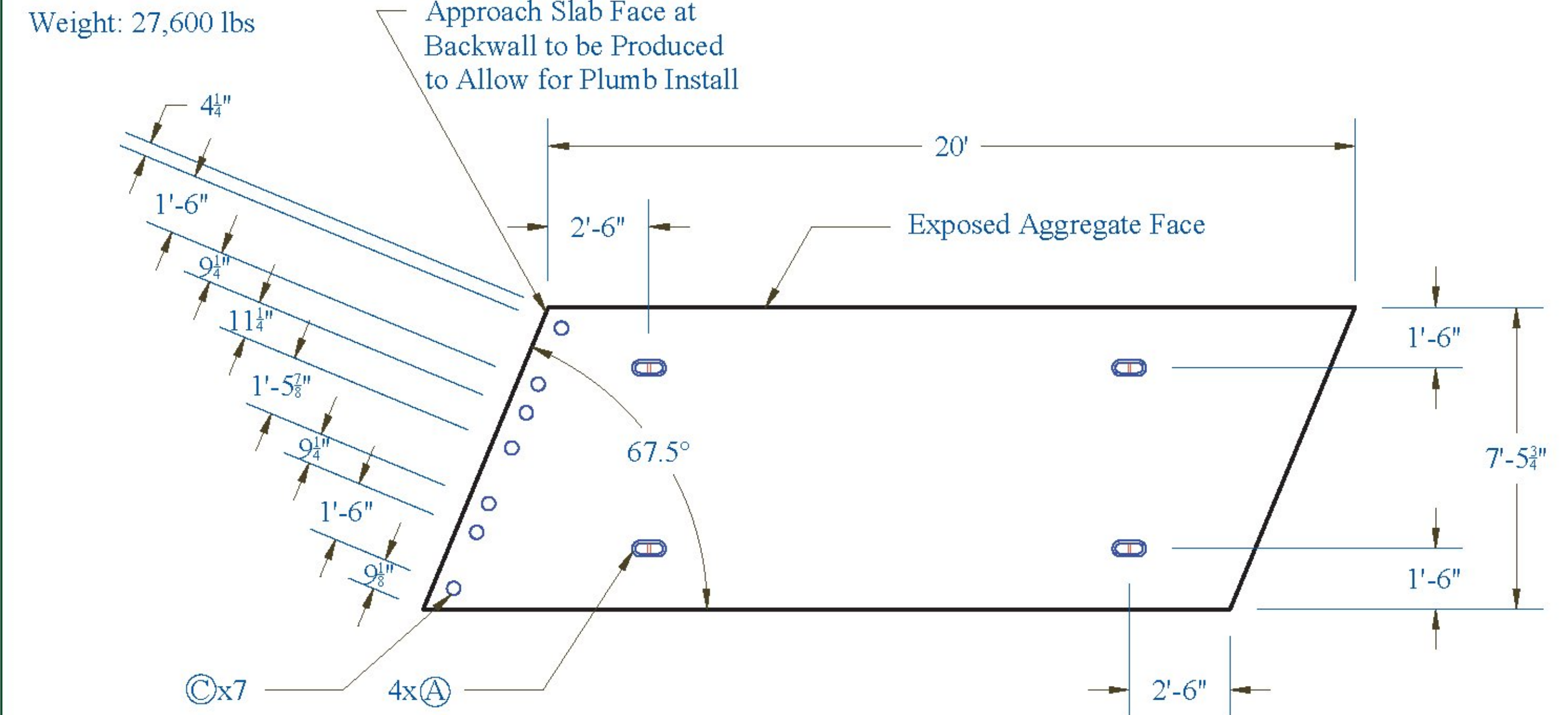
Approach Slab 2B:



Please state the material, so that it's clear from these drawings.

Note: 15" Thick Slab

Approach Slab 2C:



Note: 15" Thick Slab

Vermont Agency of Transportation
RECEIVED
 CK'D BY Rob Young
 OK'D BY Rob Young
 April 21, 2017
 RESUBMIT NO Approved AsNoted
 BY Rob Young DATE 04/28/2017

CONTRACTORS VISPE:	LEGEND:	PRECAST CONCRETE ABUTMENT SHOP DRAWINGS (SDI JOB #18544)		INSTALLER:	FABRICATOR:
		(A) Oxford A750-7 (B) P52:20T x 10" Lift (C) 4" Pipe (D) 3" Pipe (E) Ø 24" Galv. Corrugated Steel Pipe (F) Ø 15" Galv. Corrugated Steel Pipe (G) Ø 3" x 24" Plastic Corrugated Sleeve (H) P53 Lift w/ Tension Bar (I) 1" Chamfer	SUPERVISOR: E. Barendse DETAILER: I. ADAMS CHECKER: E. Barendse ENGINEER: CONCRETE ENG. SOLUTIONS	PROJ. NAME: HUNTINGTON PROJECT #: BF 0211(32) LOCATION: HUNTINGTON, VT	S.D. IRELAND CONCRETE WILLISTON, VT 05495 Ph: (802) 863-6222 04/20/17

