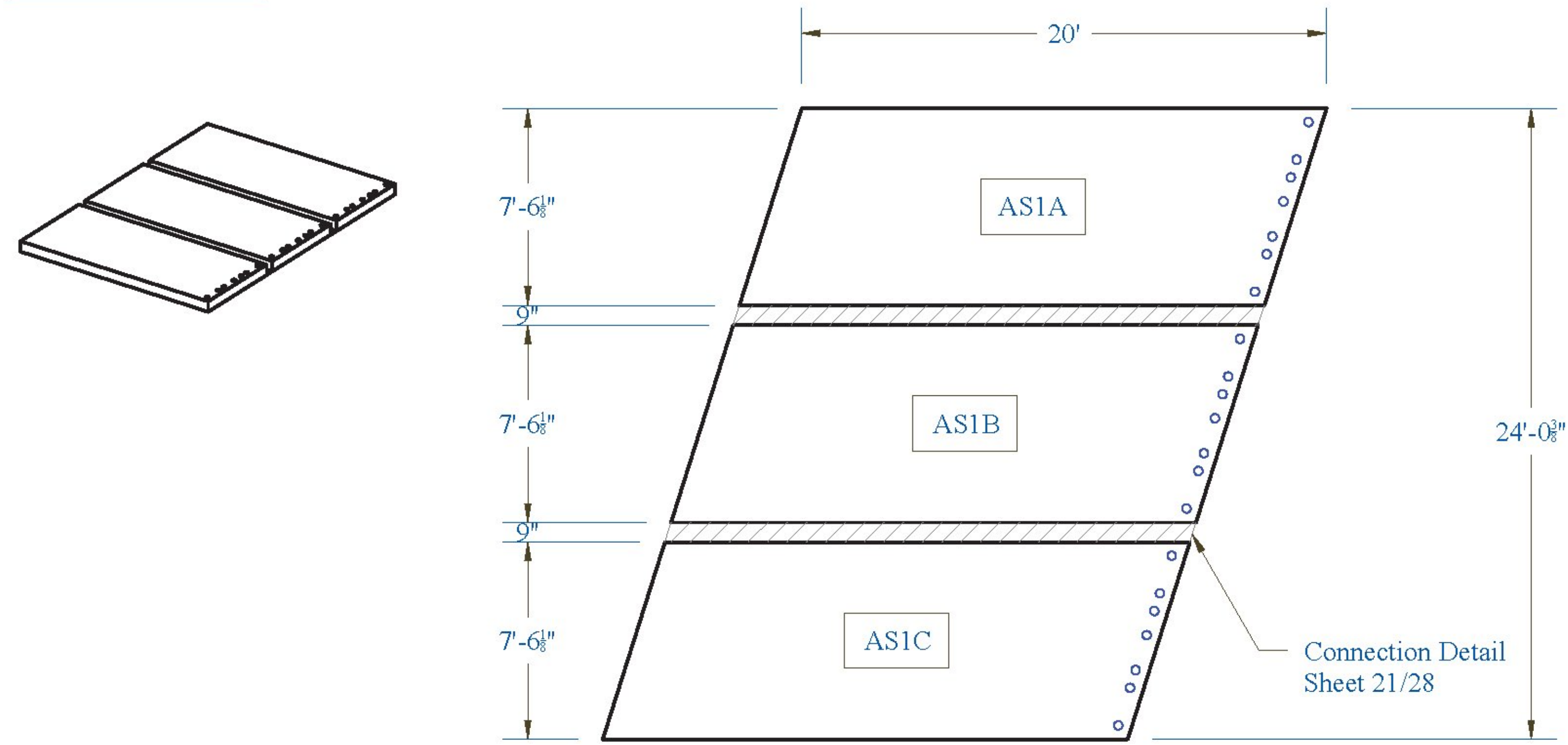
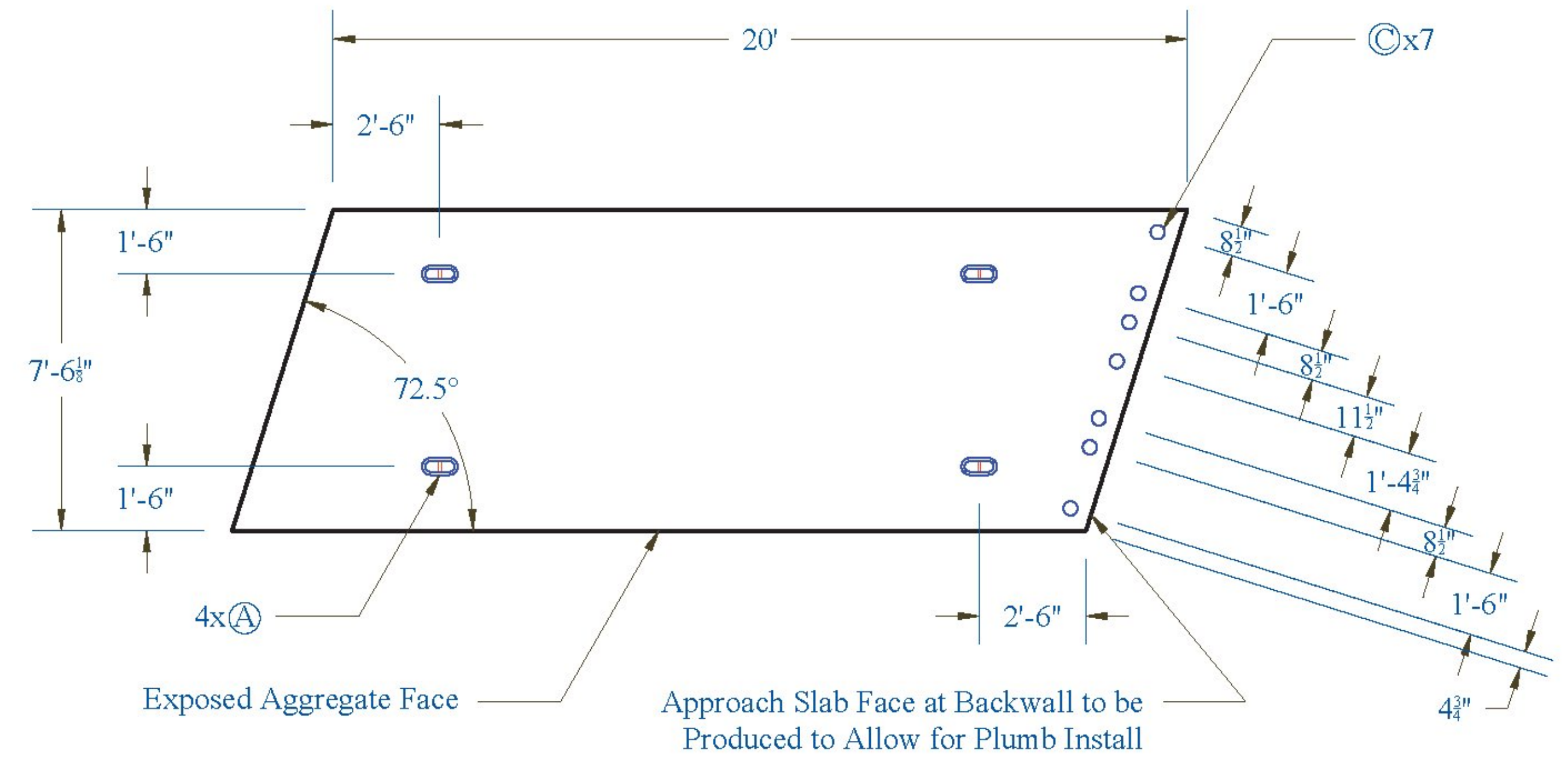


Approach Slab 1:



Approach Slab 1A:

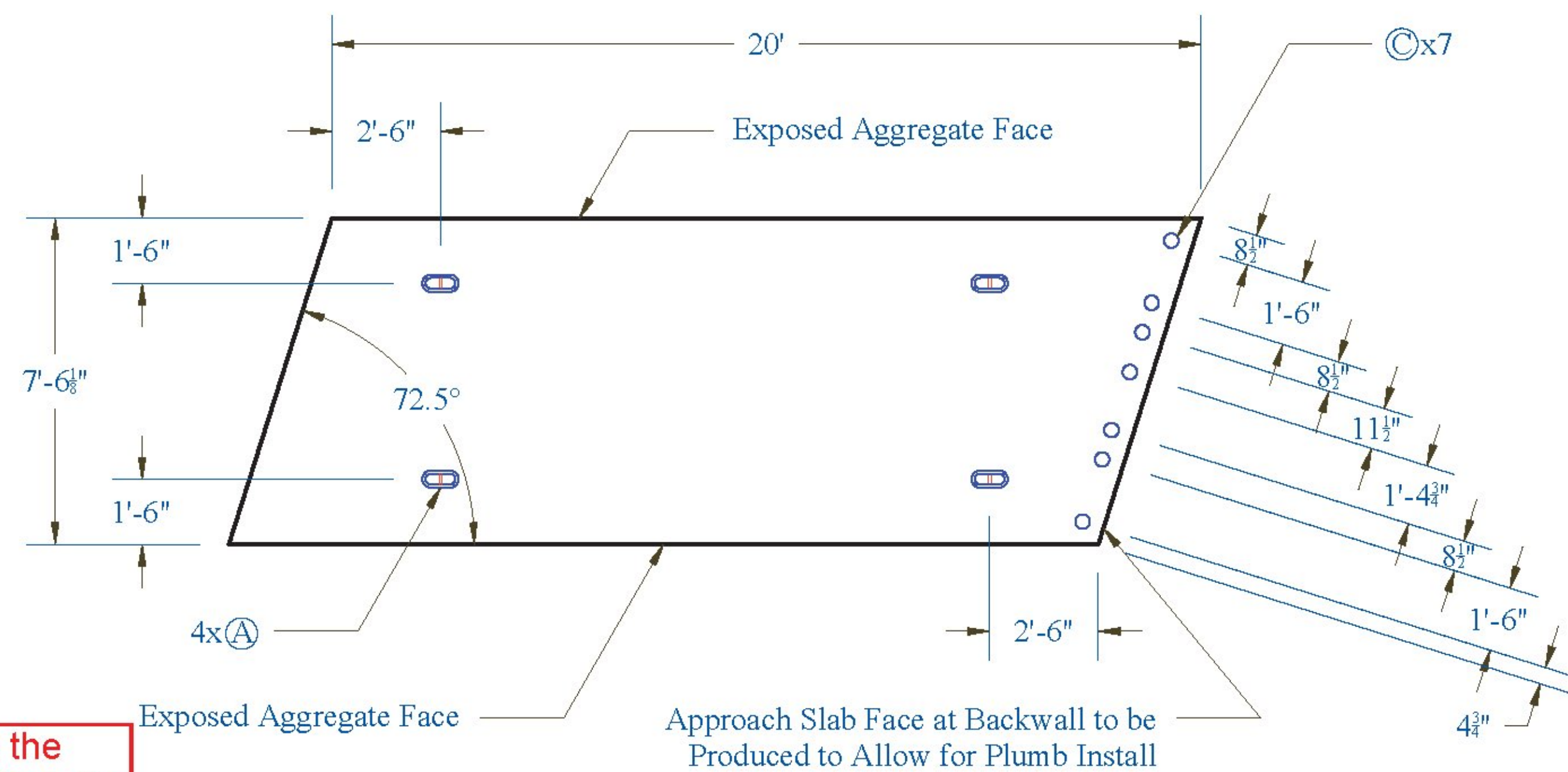
Weight: 27,720 lbs



Note: 15" Thick Slab

Approach Slab 1B:

Weight: 27,720 lbs

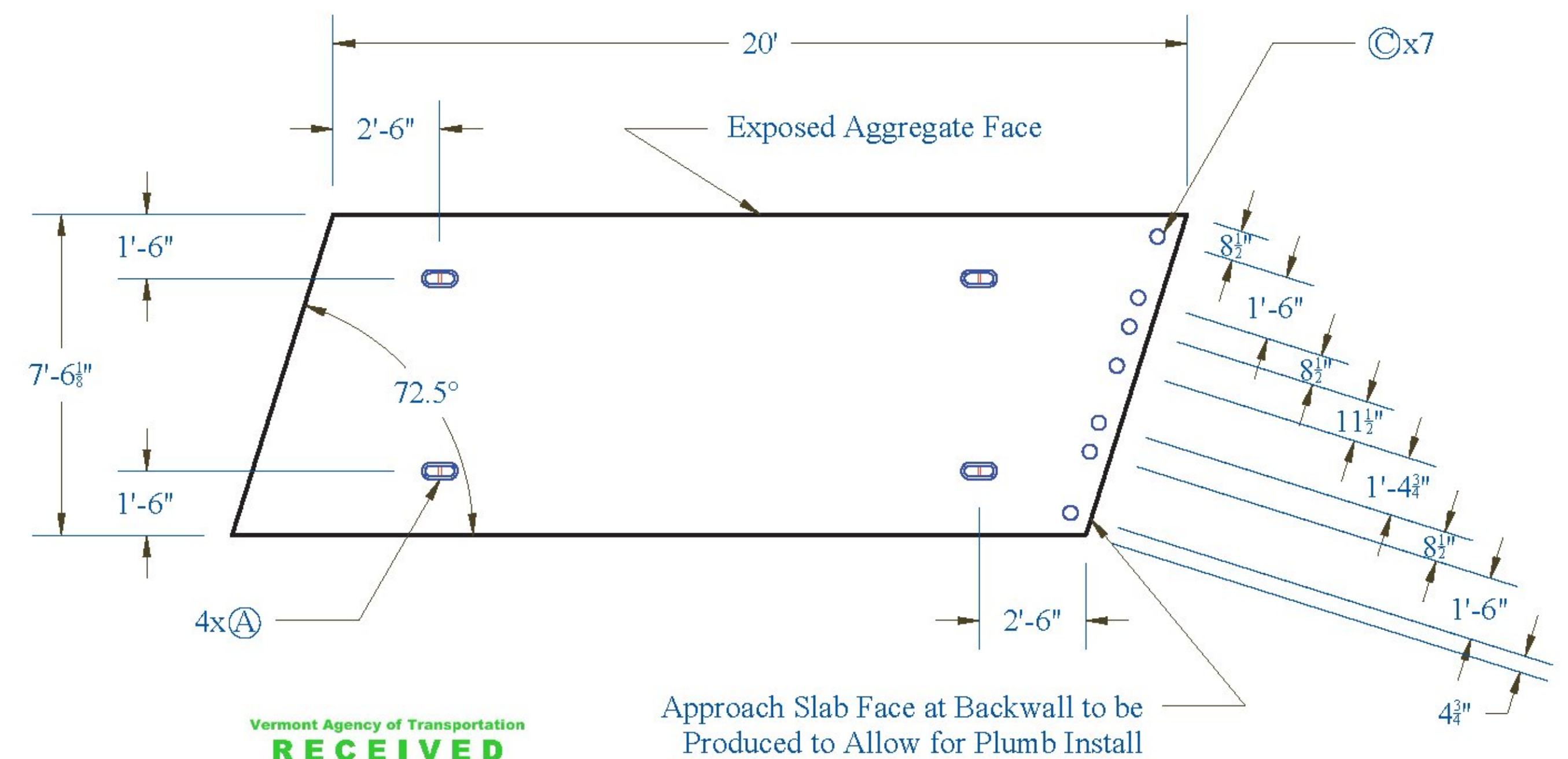


Please state the material, so that it's clear from these drawings.

Note: 15" Thick Slab

Approach Slab 1C:

Weight: 27,720 lbs



Vermont Agency of Transportation
RECEIVED
CK'D BY: Rob Young
OK'D BY: Rob Young
April 21, 2017
RESUBMIT NO: Approved AsNoted
BY: Rob Young DATE: 04/28/2017

Note: 15" Thick Slab

CONTRACTORS VISIT:	LEGEND: (A) Oxford A750-7 (B) P52:20T x 10" Lift (C) 7" Pipe (D) 3" Pipe (E) Ø 24" Galv. Corrugated Steel Pipe (F) Ø 15" Galv. Corrugated Steel Pipe (G) Ø 3" x 24" Plastic Corrugated Sleeve (H) P53 Lift w/ Tension Bar (I) 1" Chamfer	PRECAST CONCRETE ABUTMENT SHOP DRAWINGS (SDI JOB #18544)		INSTALLER:	FABRICATOR:
		SUPERVISOR: E. Barendse	PROJ. NAME: HUNTINGTON	S.D. IRELAND CONCRETE	193 INDUSTRIAL AVE.
	DETAILER: I. ADAMS	PROJECT #: BF 0211(32)	WILLISTON, VT 05495	WILLISTON, VT 05495	
	CHECKER: E. Barendse	LOCATION: HUNTINGTON, VT	Ph: (802) 863-6222	Ph: (802) 863-6222	
	ENGINEER: CONCRETE ENG. SOLUTIONS		04/20/17	APPROACH_SLAB_1	2/29