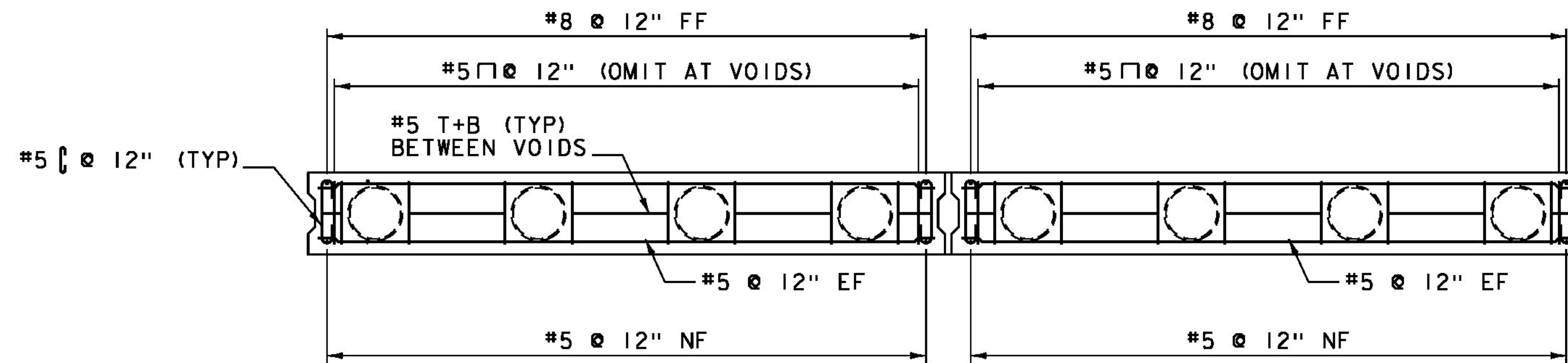
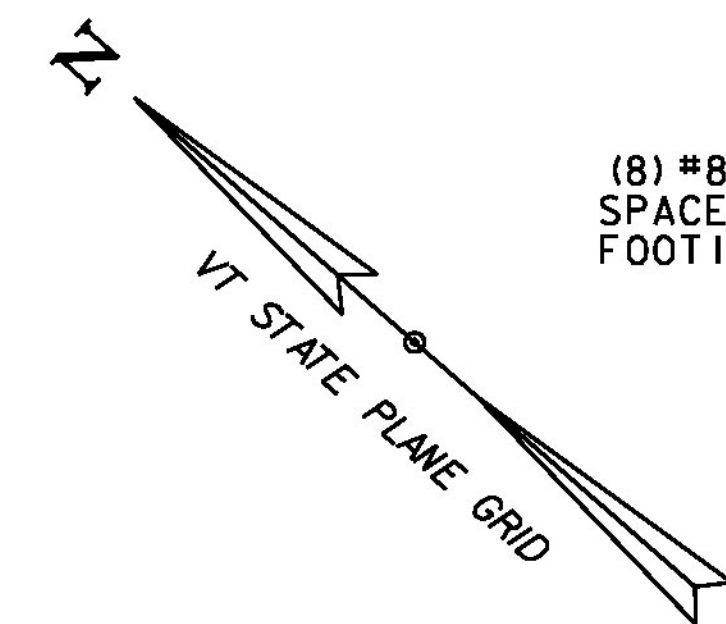
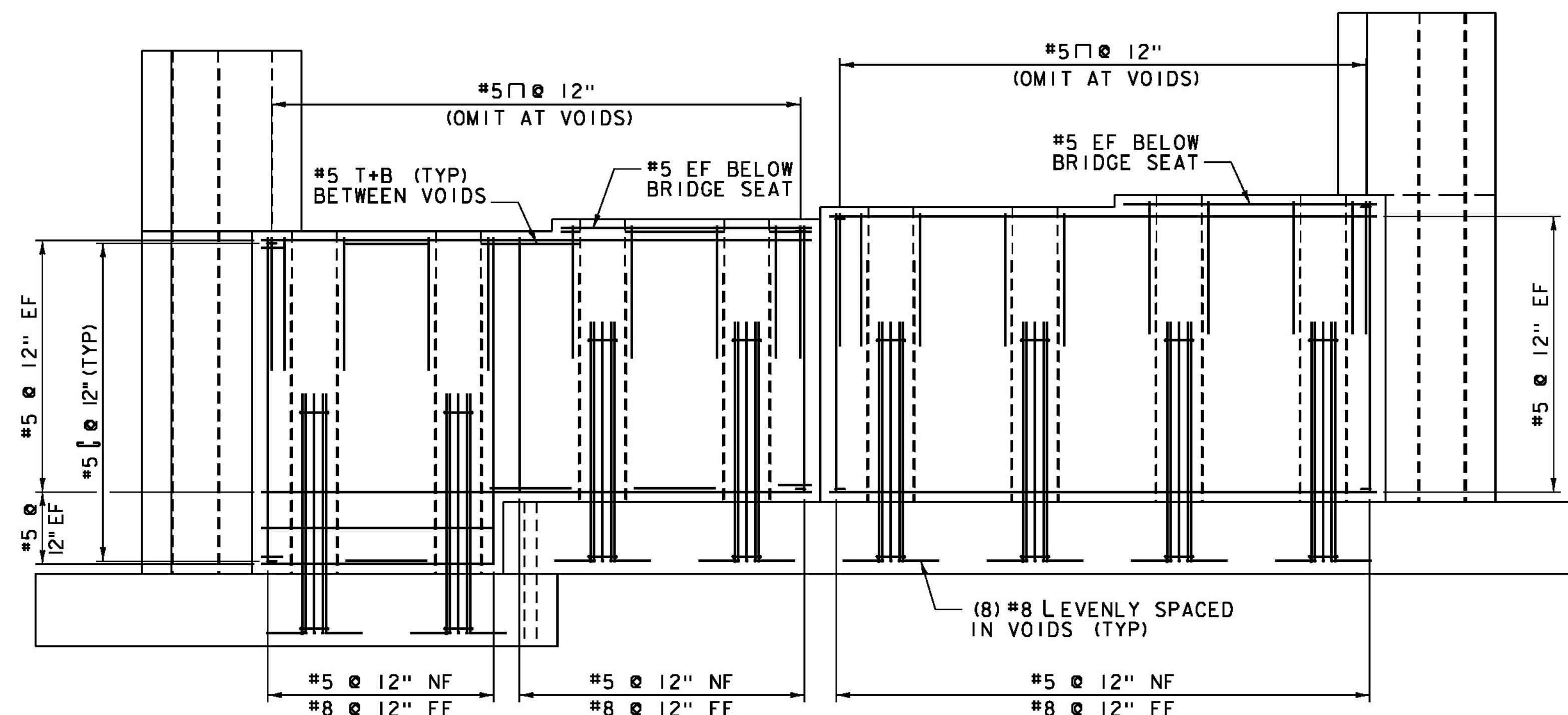


NOTES:

1. PLASTIC SHIMS SHALL BE CAPABLE OF SUPPORTING THE WEIGHT OF THE PRECAST UNITS AND SPACED AS REQUIRED BETWEEN THE CORRUGATED STEEL PIPE VOIDS TO PROVIDE A 1" MINIMUM GAP TO ALLOW FOR THE PLACEMENT OF 1" OF MORTAR, TYPE IV. SHIMS SHALL ALSO ALLOW FOR FINAL GRADE ADJUSTMENTS AS NECESSARY. MORTAR, TYPE IV SHALL HAVE REACHED ITS FINAL SET PRIOR TO FILLING THE CORRUGATED PIPE VOIDS WITH HIGH PERFORMANCE CONCRETE, RAPID SET.
2. MECHANICAL CONNECTORS MAY BE USED BY THE FABRICATOR FOR THE REINFORCING THAT PROJECTS FROM THE FOOTING INTO THE STEM. IF MECHANICAL CONNECTORS ARE USED, THEY SHALL BE KEPT CLEAN OF DIRT AND DEBRIS UNTIL PLACEMENT OF REINFORCING. PAYMENT FOR MECHANICAL CONNECTORS, IF USED, SHALL BE CONSIDERED INCIDENTAL TO THE APPLICABLE PRECAST ITEM.
3. LEVELING BOLTS ALONG THE TOE TO BE LOCATED BETWEEN GROUT PORTS.
4. WINGWALL REINFORCING NOT SHOWN IN ELEVATION FOR CLARITY.

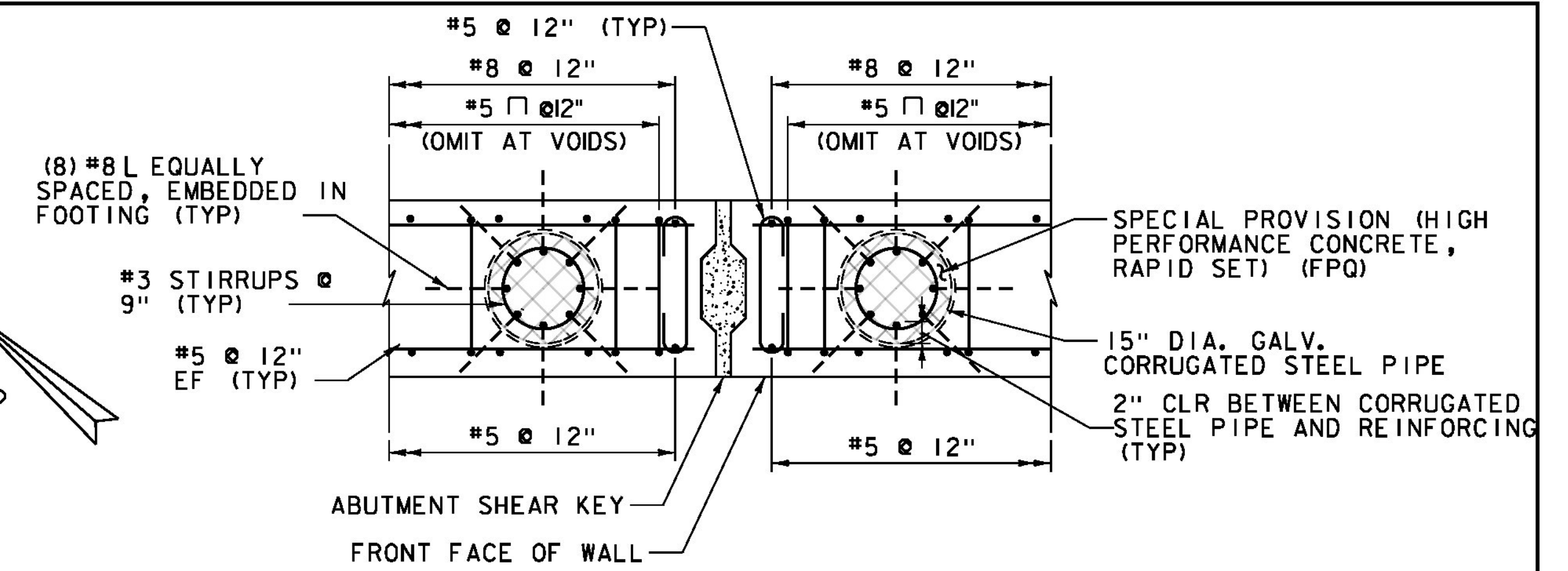


ABUTMENT NO 2 STEM REINFORCING PLAN
SCALE 3/8" = 1'-0"

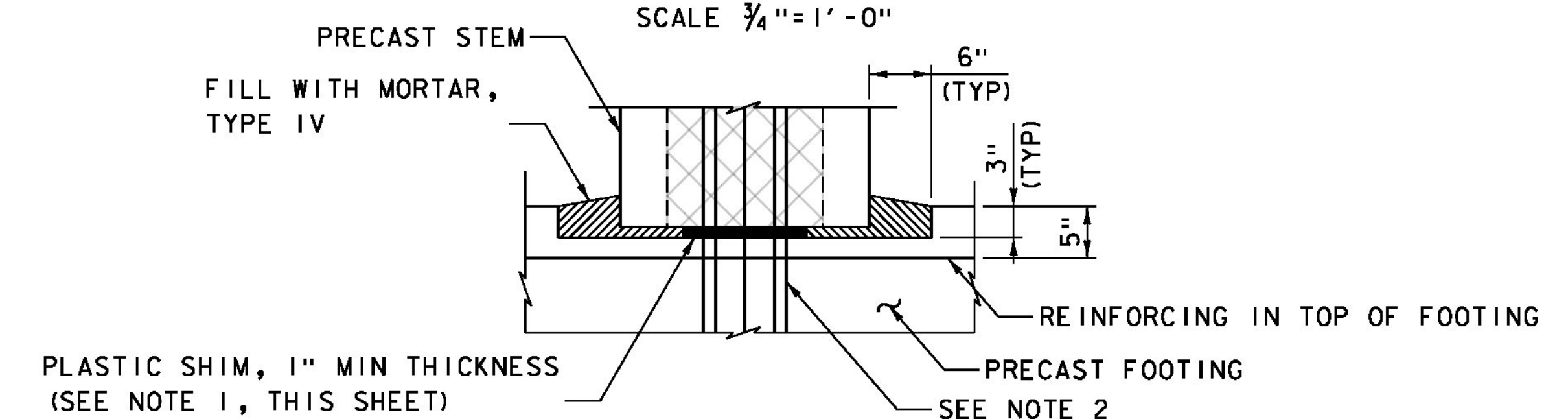


ABUTMENT NO 2 STEM REINFORCING ELEVATION
SCALE 3/8" = 1'-0"

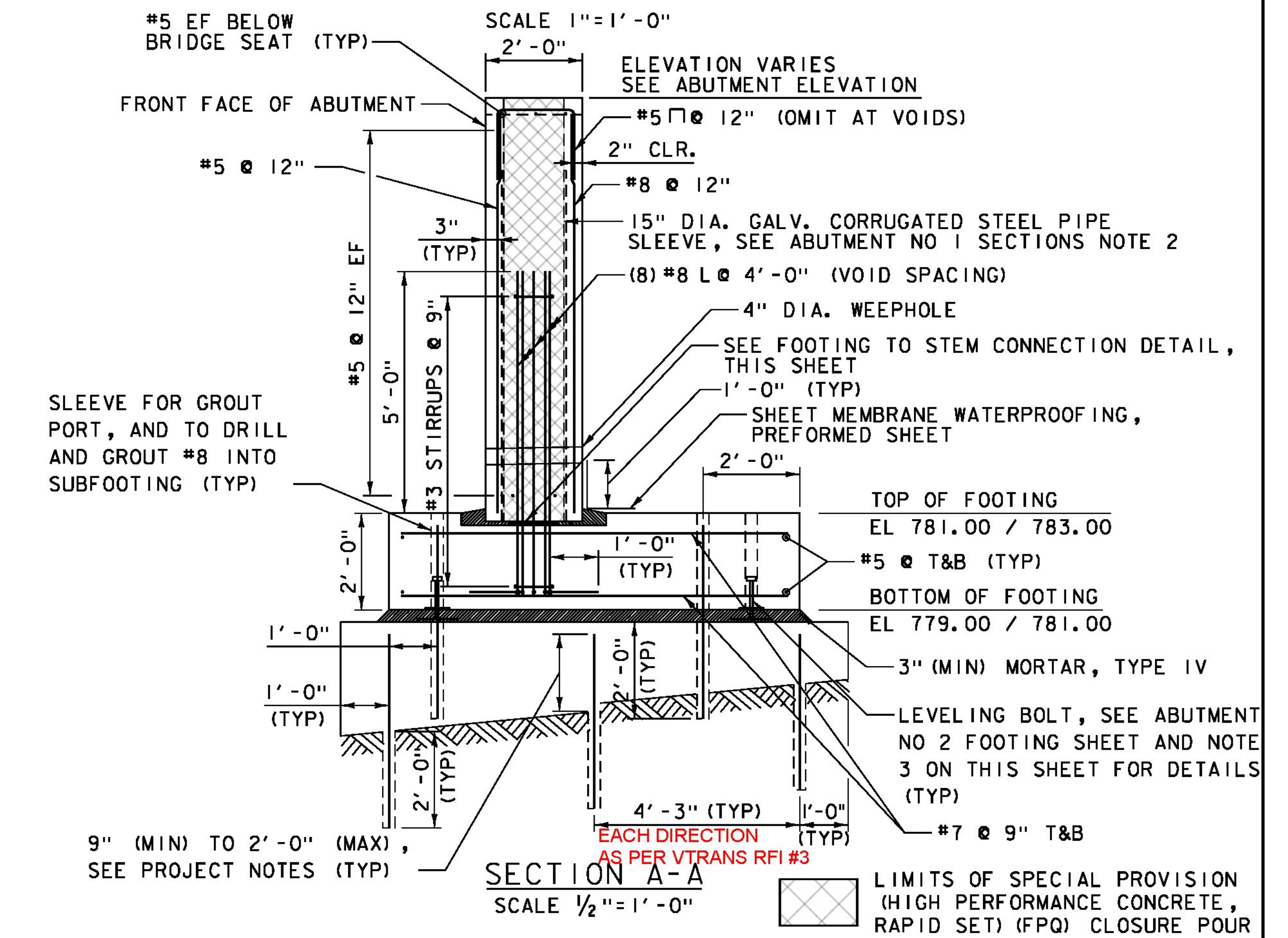
NOTE:
T+B = TOP AND BOTTOM
NF = NEAR FACE
FF = FAR FACE
EF = EACH FACE
▲ = CUT TO FIT IN FIELD
3" CLEAR, UNLESS OTHERWISE SPECIFIED ON THE PLANS.
2'-2" BAR LAP UNLESS OTHERWISE SPECIFIED ON THE PLANS.



ABUTMENT STEM DETAIL
SCALE 3/4" = 1'-0"



FOOTING TO STEM CONNECTION DETAIL
SCALE 1" = 1'-0"



SECTION A-A
SCALE 1/2" = 1'-0"

PROJECT NAME:	HUNTINGTON	PLOT DATE:	8/15/2016
PROJECT NUMBER:	BF 0211(32)	DRAWN BY:	J.D. KEENER
FILE NAME:	z13j080sub2.dgn	CHECKED BY:	R.H. BARNES
PROJECT LEADER:	S.E. BURBANK	DESIGNED BY:	R.H. BARNES
ABUTMENT NO 2 REINFORCING			SHEET 42 OF 62

