

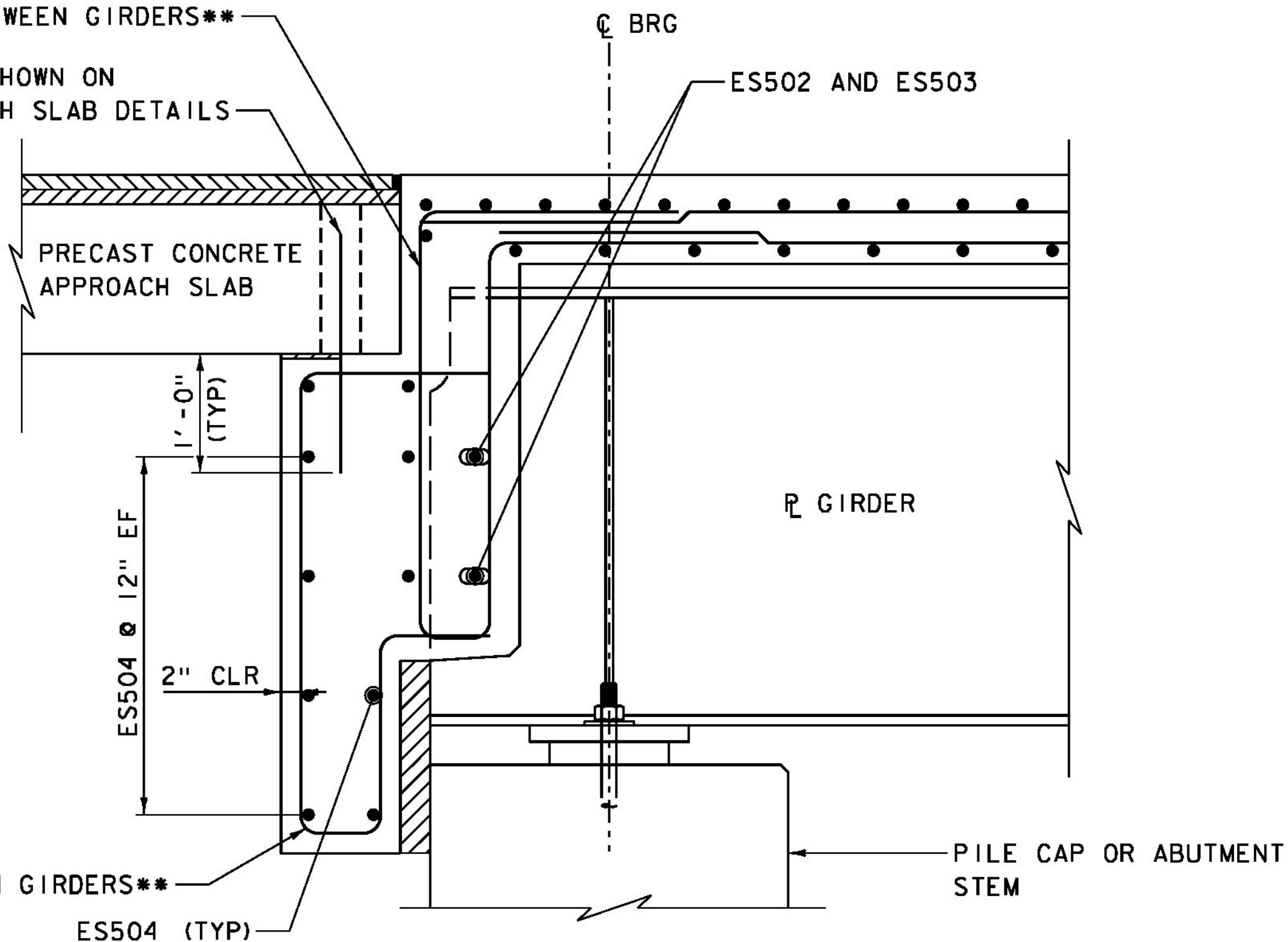
ABUTMENT NO 1 BRIDGE END DETAIL

SCALE 3/4" = 1'-0"

* (2) - 1 1/2" LIFTS OF TYPE IVS

ES505 @ 12" BETWEEN GIRDERS**

#8, SPACED AS SHOWN ON PRECAST APPROACH SLAB DETAILS

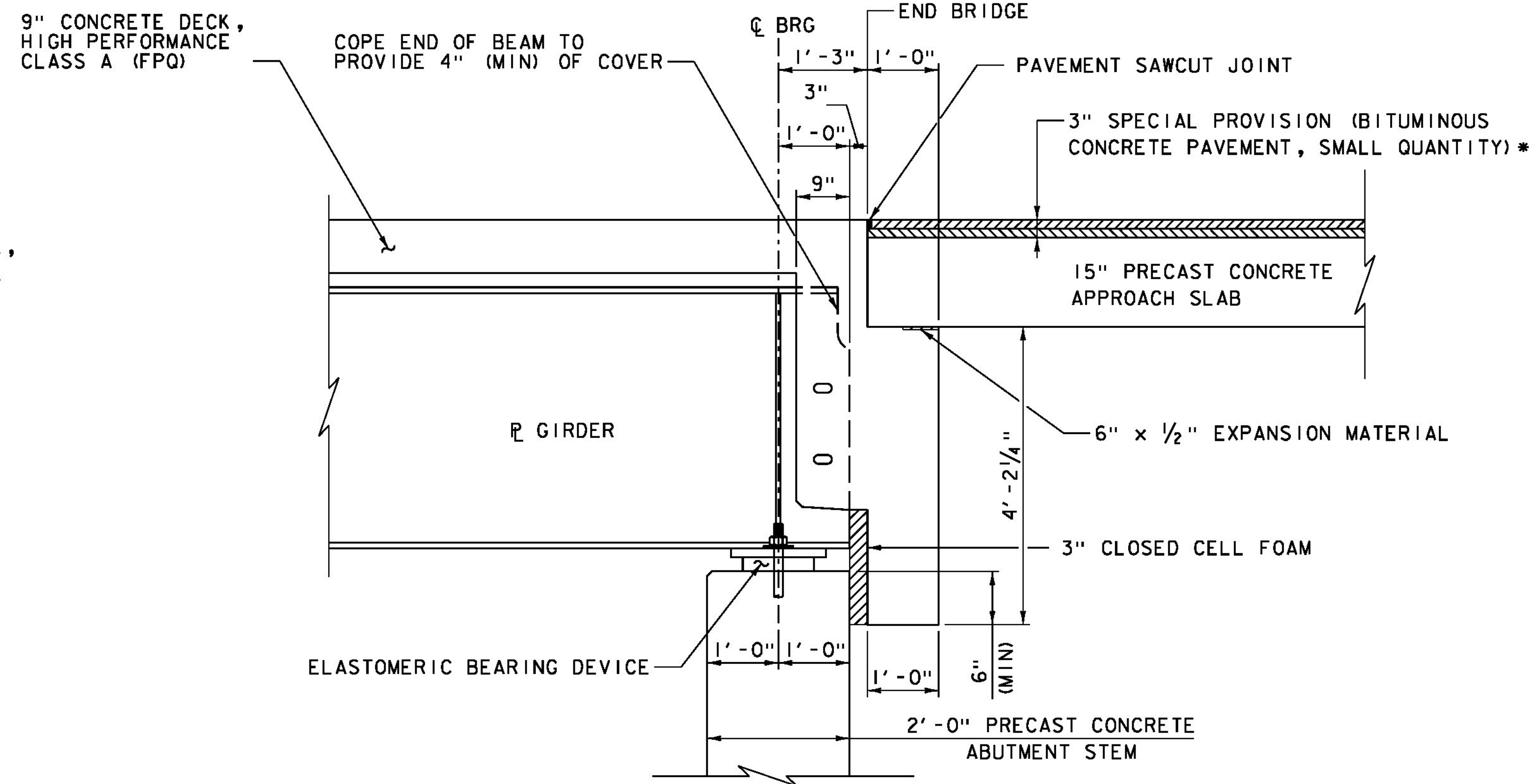


BRIDGE END DETAIL REINFORCING TYPICAL

SCALE 1" = 1'-0"

** REINFORCING TO BE PLACED PARALLEL TO LONGITUDINAL DECK REINFORCING

NOTE: APPROACH SLAB AND ABUTMENT REINFORCING NOT SHOWN FOR CLARITY.

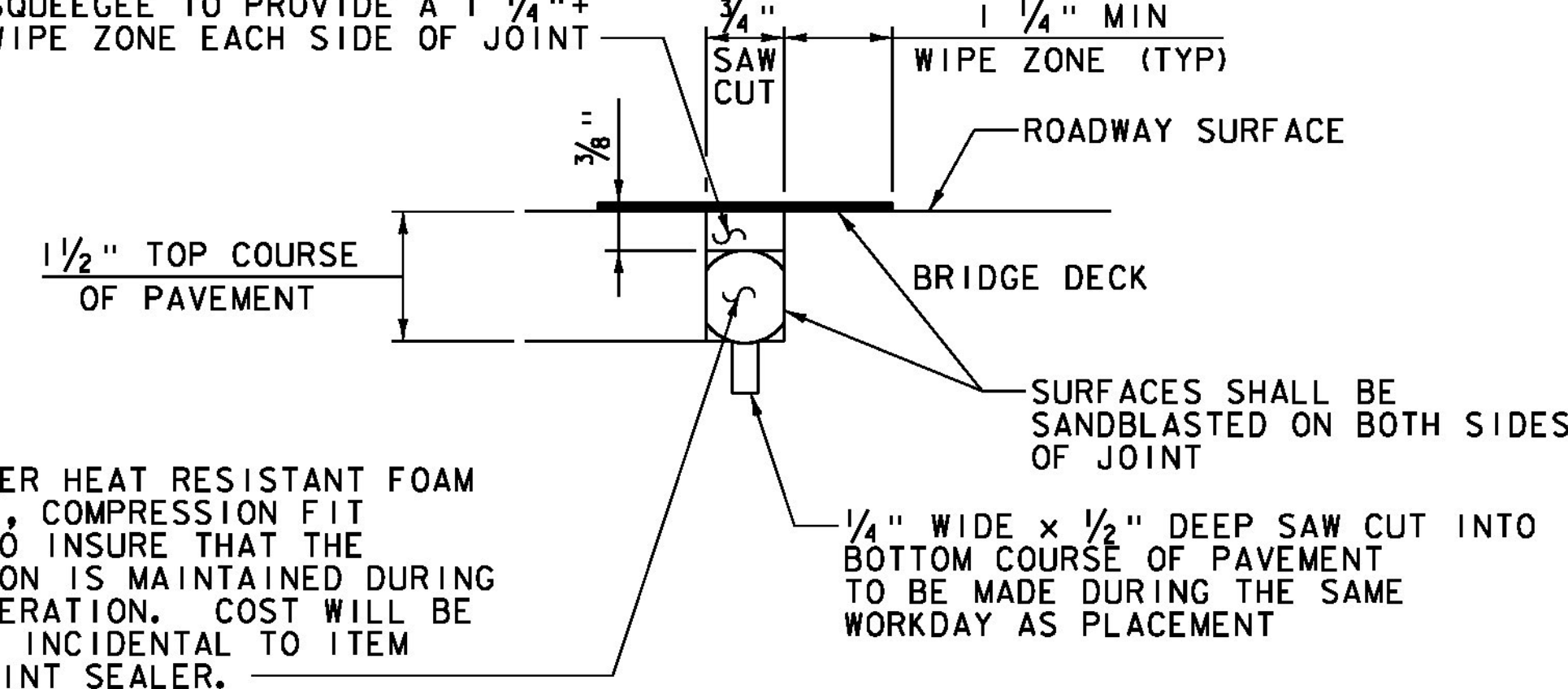


ABUTMENT NO 2 BRIDGE END DETAIL

SCALE 3/4" = 1'-0"

NOTE: HORIZONTAL DIMENSIONS PROVIDED IN BRIDGE END DETAILS ARE PERPENDICULAR TO C BRG UNLESS NOTED OTHERWISE.

JOINT SEALER, HOT Poured SHALL BE SLIGHTLY OVER FILLED THEN WIPED FLUSH WITH A "V" OR "U" SHAPED SQUEEGEE TO PROVIDE A 1/4" WIPE ZONE EACH SIDE OF JOINT



SAW CUT JOINT DETAIL

NOT TO SCALE

3/8" DIAMETER HEAT RESISTANT FOAM BACKER ROD, COMPRESSION FIT REQUIRED TO INSURE THAT THE ROD POSITION IS MAINTAINED DURING FILLING OPERATION. COST WILL BE CONSIDERED INCIDENTAL TO ITEM 524.11, JOINT SEALER.

1. JOINT IS TO BE LOCATED ACCURATELY BY STRING LINING OR OTHER MEANS, PRIOR TO PAVING, SO THAT THE SAW CUTS WILL BE MADE DIRECTLY OVER THE END OF THE CONCRETE DECK. JOINT SHALL BE CUT DRY IN A SINGLE PASS AND BE SEALED WITHIN 24 HOURS OR PRIOR TO EXPOSURE TO TRAFFIC. JOINT SHALL BE CLEANED PRIOR TO APPLYING THE JOINT SEALER.
2. SAW CUT JOINT WILL BE PAID FOR UNDER ITEM 524.11, "JOINT SEALER, HOT Poured".

NOTE:

NF = NEAR FACE
 FF = FAR FACE
 EF = EACH FACE
 ▲ = CUT TO FIT IN FIELD
 3" CLEAR, UNLESS OTHERWISE SPECIFIED ON THE PLANS.
 2'-2" BAR LAP UNLESS OTHERWISE SPECIFIED ON THE PLANS.



PROJECT NAME: HUNTINGTON
 PROJECT NUMBER: BF 0211(32)

FILE NAME: z13j080sup.dgn
 PROJECT LEADER: S.E. BURBANK
 DESIGNED BY: J.D. KEENER
 BRIDGE END DETAILS

PLOT DATE: 9/22/2016
 DRAWN BY: J.D. KEENER
 CHECKED BY: R.H. BARNES
 SHEET 29 OF 62