
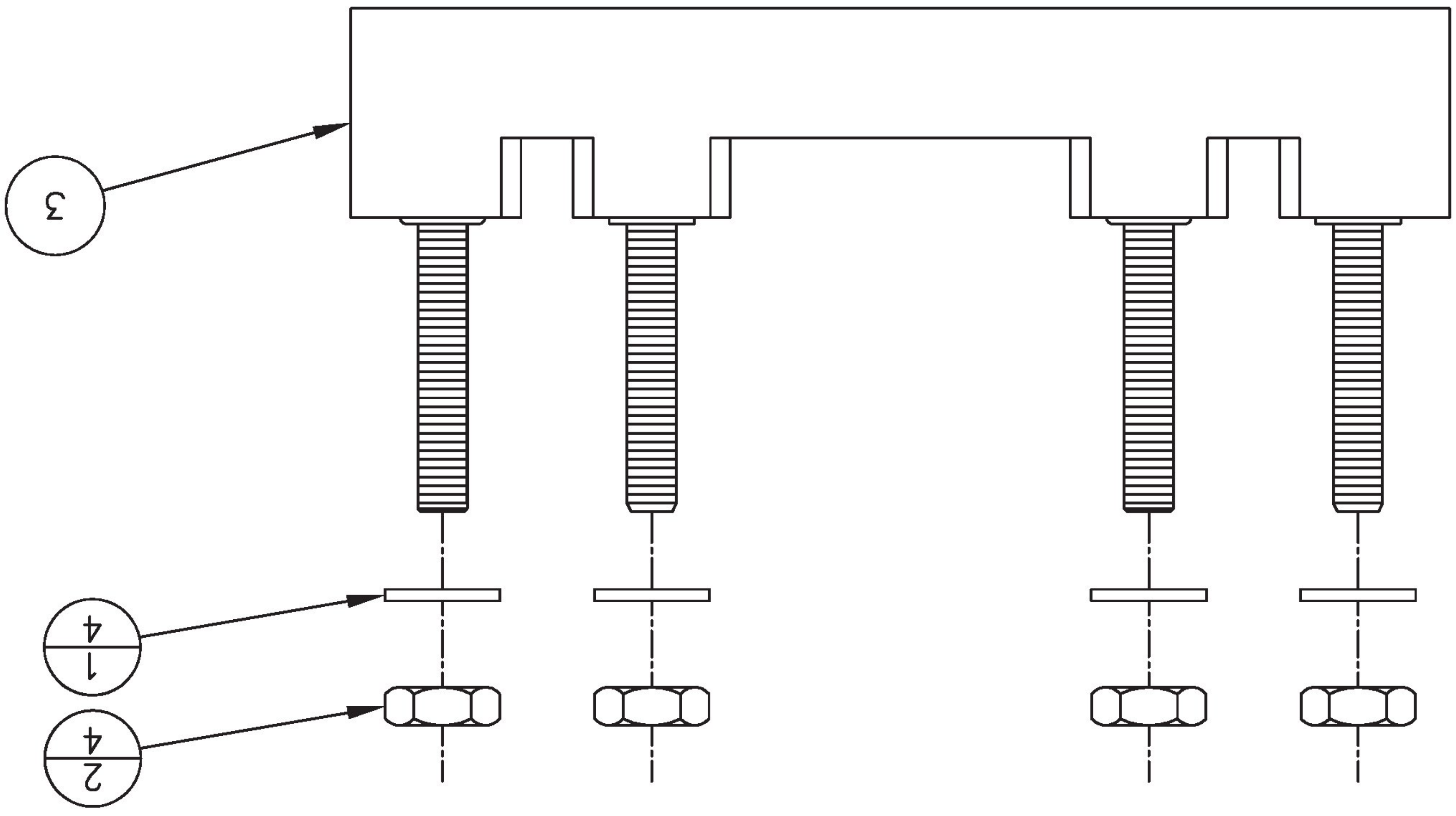


|  |  |             |  |              |  |          |  |                                       |  |                |  |                                    |  |          |  |                |  |              |  |
|--|--|-------------|--|--------------|--|----------|--|---------------------------------------|--|----------------|--|------------------------------------|--|----------|--|----------------|--|--------------|--|
| REV. SHEET   |  | DRAWING NO. |  | SCALE        |  | PRODUCT: |  |                                       |  |                |  |                                    |  |          |  |                |  |              |  |
| 1 OF 1   |  | 203032-000  |  | A NTS        |  |          |  |                                       |  |                |  |                                    |  |          |  |                |  |              |  |
| TITLE  |  |             |  | APPROVED     |  |          |  | REV                                   |  | CHANGE NO.     |  | DATE                               |  | BY       |  | APVD           |  |              |  |
| ASSEMBLY<br>4 POST<br>ARRESTOR BASE  |  |             |  | WAYNE WOMACK |  |          |  | AAO                                   |  | 90102800       |  | 08/05                              |  | SU       |  | WW             |  |              |  |
| ARGO & DILLINGHAM, GRAIN VALLEY, MO 64029 U.S.A.   |  |             |  | DATE         |  |          |  | UNLESS OTHERWISE SPECIFIED DIMENSIONS |  | ARE IN INCHES. |  | DIMENSIONS IN [ ] ARE MILLIMETERS. |  | .XX ± NA |  | FRACTIONS ± NA |  |              |  |
|  <b>GE TRANSPORTATION SYSTEMS</b><br>GLOBAL SIGNALING |  |             |  | DATE         |  |          |  | DRAWN BY                              |  | SUNIL UDDARAJU |  | 08/01/05                           |  | DATE     |  | APPROVED       |  | WAYNE WOMACK |  |
|  |  |             |  | DATE         |  |          |  | 08/05                                 |  | DATE           |  | 08/05                              |  | DATE     |  | 08/05          |  | DATE         |  |

NOTES:  
1. TORQUE NUTS (DIN 2) TO 60 IN LBS.



PROPRIETARY & CONFIDENTIAL DATA  
 INFORMATION CONTAINED IN THIS DRAWING IS PROPRIETARY & CONFIDENTIAL DATA BY GE TRANSPORTATION SYSTEMS - GLOBAL SIGNALING AND IS SUBMITTED FOR THE SOLE PURPOSE OF MAINTAINING GE TRANSPORTATION SYSTEMS - GLOBAL SIGNALING EQUIPMENT. ANY UNAUTHORIZED USE OR DISTRIBUTION OF THIS DRAWING IS STRICTLY PROHIBITED.  
 © 2001 GE TRANSPORTATION SYSTEMS - GLOBAL SIGNALING