

682 GENERAL RAILWAY SIGNAL Co. ROCHESTER, N.Y.

GROUND POST ASSEMBLY NO. 58277

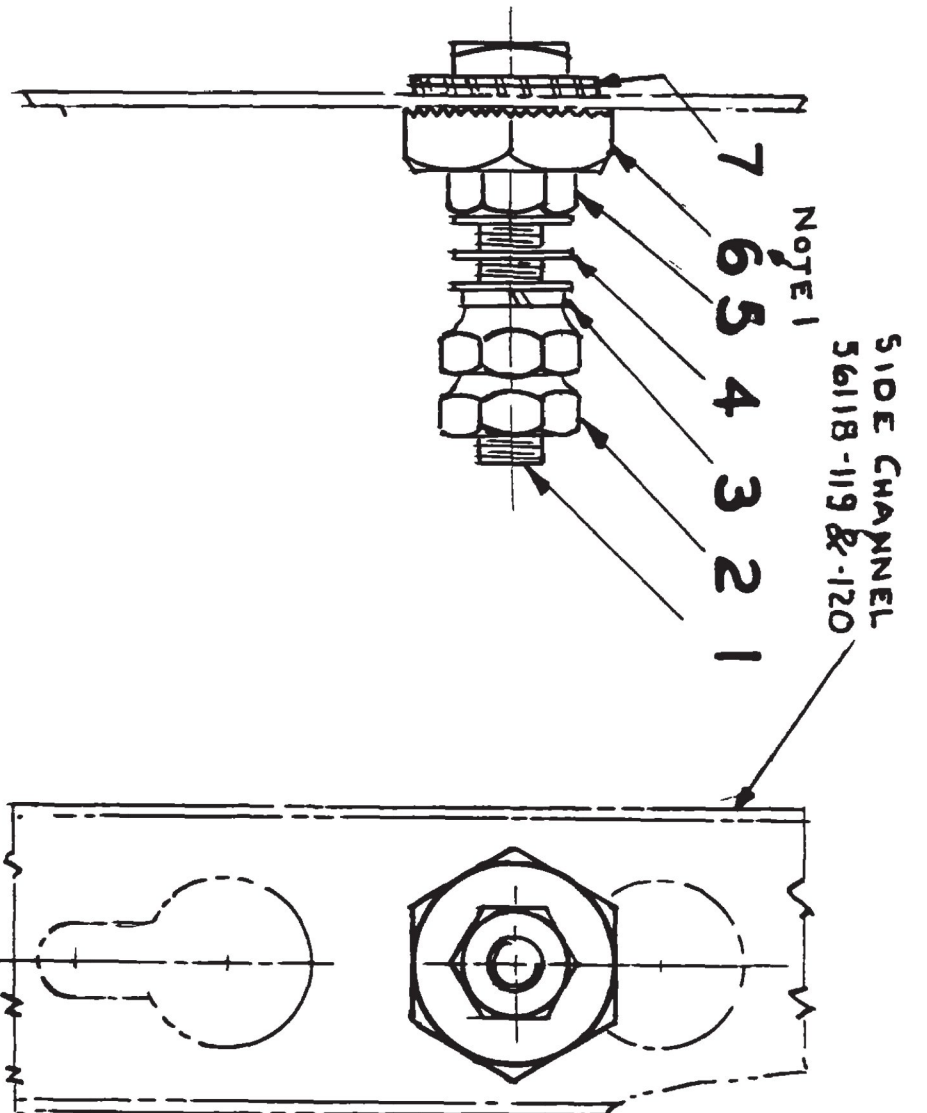
TYPE: 5/16-18 GROUND POST ASSEMBLY WITH SELF SCRAPING BASE. NUTS

NOTE 1: Hex Nut Ref 6 To Be Tightened Enough To Remove Paint From Outer Surface Of Channel Thus Providing A Good Electrical Ground

NOTE 2: Place Ground Post Parts In Large Coin Envelope (Tag And Seal By Stapling (Parts Not To Be Assembled))

USE 46989-7 UNTIL STOCK IS EXHAUSTED

GR. 2	GR. 1	REF	NAME	AMOUNT	REMARKS
1	3.53	1	SCREW 1/8-18x1 1/2 SQ HD BRZ	6	REPLACED REF WAS 42843-4 REF 5 WAS 46989-7 R-A2098 12-7-56
2	42843-9	2	NUT 1/8-18 X 1/2 TH	6	
1	0623-4	3	WASHER 1/8-18 X 1/2 TH	6	
3	1225-21	4	WASHER 1/8-18 X 1/2 TH	6	
1	46989-11	5	NUT 1/8-18 X 1/2 TH	6	
1	18466	6	NUT 1/8-18 X 1/2 TH	6	
2	53029-50	7	WASHER 1/8-18 X 1/2 TH	6	
1	55085-193		TAG (ENVELOPE)	2	



NOTE 1

SIDE CHANNEL 56118-113 & 120

10 X 14

NOTICE OF CONFIDENTIAL INFORMATION: Information contained herein is confidential and is the property of the General Railway Signal Company. Where furnished with a proposal the recipient shall use it solely to evaluate the proposal. Where furnished under a contract the recipient shall use it solely in the performance of the contract. The information shall not be used or disclosed by the recipient for any other purpose whatsoever.

DATE	BY	CHKD	DATE	BY	CHKD
11/11/54	W. J. L.		11/11/54	W. J. L.	
12/7/56	W. J. L.		12/7/56	W. J. L.	