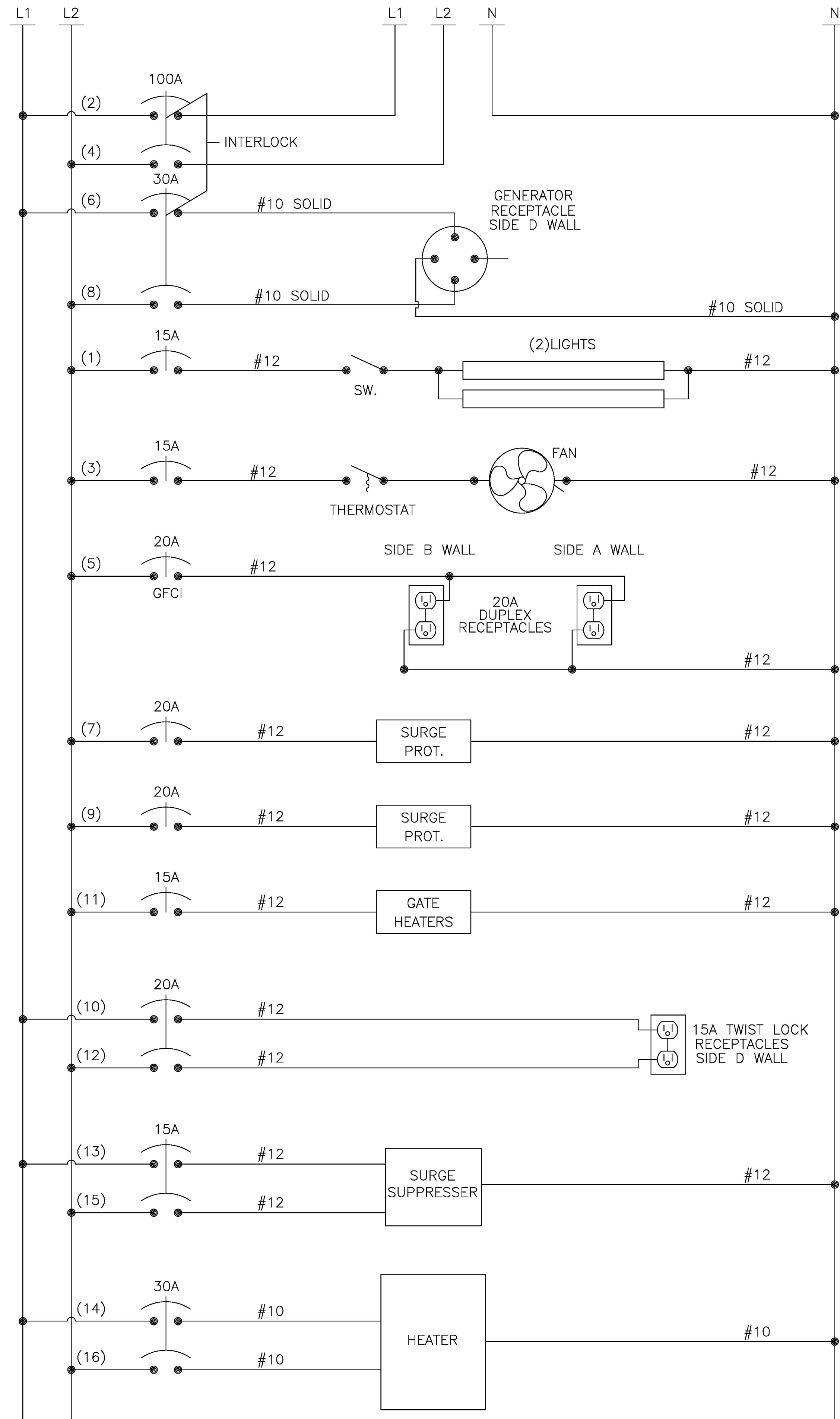
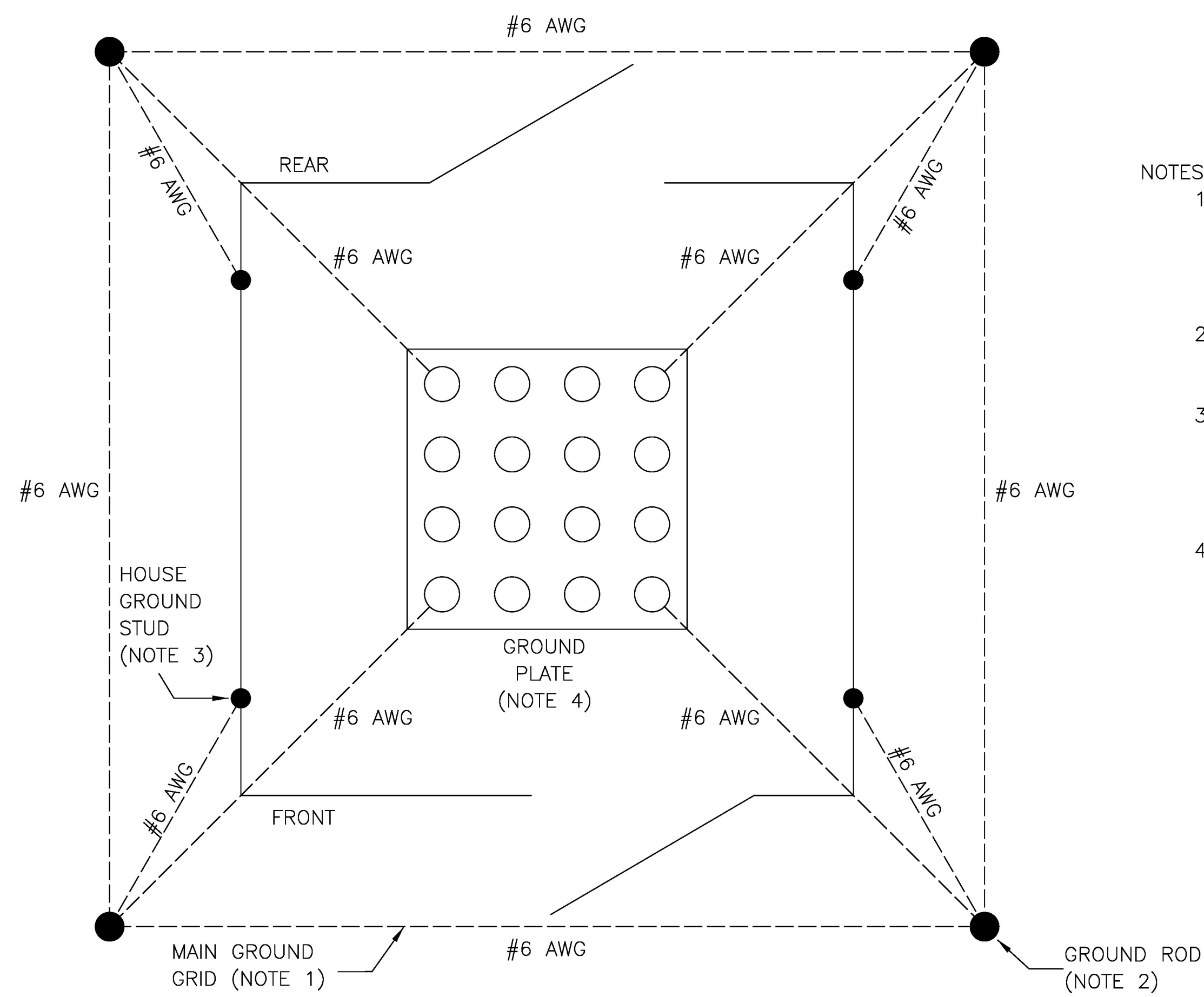


120/240V SERVICE (SINGLE PHASE)



BREAKER BOX DISTRIBUTION
SCHNEIDER Q0124M100 LOAD CENTER

1	15A LIGHTS	100A MAIN	2
3	15A FAN		4
5	20A GFI RECEPTACLES	30A GENERATOR RECEPTACLE	6
7	20A B14 BATT. CHGR.		8
9	20A B12 BATT. CHGR.	20A TWIST LOCK RECEPTACLE	10
11	15A GATE HEATERS		12
13	15A SURGE SUPPRESSER	30A HEATER	14
15			16
17	SPARE	SPARE	18
19	SPARE	SPARE	20
21	SPARE	SPARE	22
23	SPARE	SPARE	24



- NOTES:
1. MAIN GROUND GRID SHALL BE COMPRISED OF #6AWG BARE SOLID COPPER WIRE, BURIED A MINIMUM OF 30" BELOW TOP OF FINISHED GRADE.
 2. GROUND RODS (QTY. OF 4) SHALL BE 5/8" DIAMETER x 10' LONG COPPER.
 3. HOUSE GROUND STUDS (QTY. OF 4) TO BE PROVIDED. #6AWG BARE COPPER SOLID WIRE SHALL BE USED TO CONNECT THE STUDS TO THEIR RESPECTIVE GROUND RODS.
 4. HOUSE GROUND PLATE (QTY. OF 1) TO BE CONNECTED TO EACH GROUND ROD WITH #6AWG BARE COPPER SOLID WIRE.

PROJECT NAME: NEW HAVEN
 PROJECT NUMBER: STP. 2035 (19)
 FILE NAME: AC POWER DISTRIBUTION.dgn PLOT DATE: 02/15/17
 PROJECT LEADER: DRAWN BY: J.L.S.
 DESIGNED BY: D.W.S. CHECKED BY: K.N.
 SIGNAL PLANS-AC POWER DISTRIBUTION SHEET 38 OF 42