

**NOTE:**

1. ALL SIGNS TO BE REMOVED ARE TO BE RETAINED UNTIL THE COMPLETION OF THE INSTALLATION OF THE RAIL-HIGHWAY ACTIVE WARNING SYSTEM.

TRAFFIC SIGN, TYPE A, ITEM 675.20

- STA 1+96 RT (2)
- STA 3+24 RT (2)
- STA 3+38 LT
- STA 3+58 LT (2)
- STA 4+85 LT (2)

REMOVE SIGNS, ITEM 675.50

- STA 2+93 RT
- STA 3+21 RT
- STA 3+57 LT
- STA 3+58 LT

DURABLE 4" YELLOW LINE (DOUBLE, CENTERLINE), ITEM 646.410

STA 1+00 - 7+00 (600 LF)

DURABLE RAILROAD SYMBOL, ITEM 646.510

RAILROAD CROSSING SYMBOL

- STA 1+96 RT
- STA 4+85 LT

RAILROAD CROSSING BAR

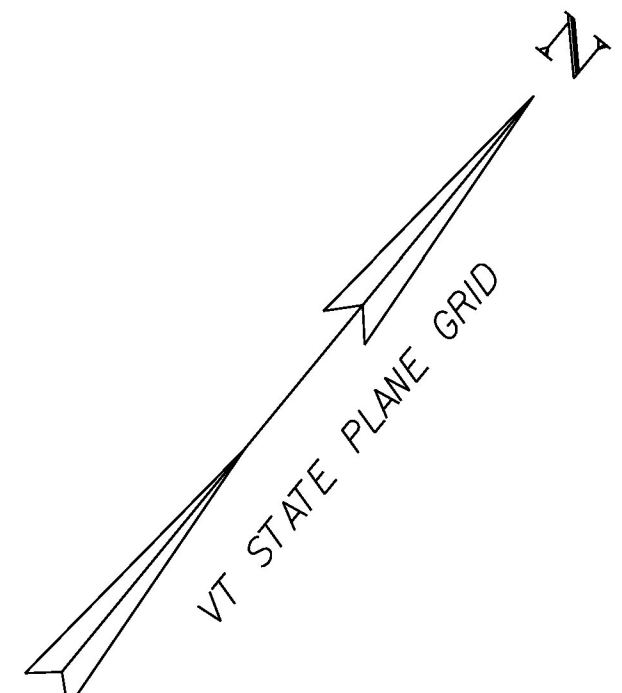
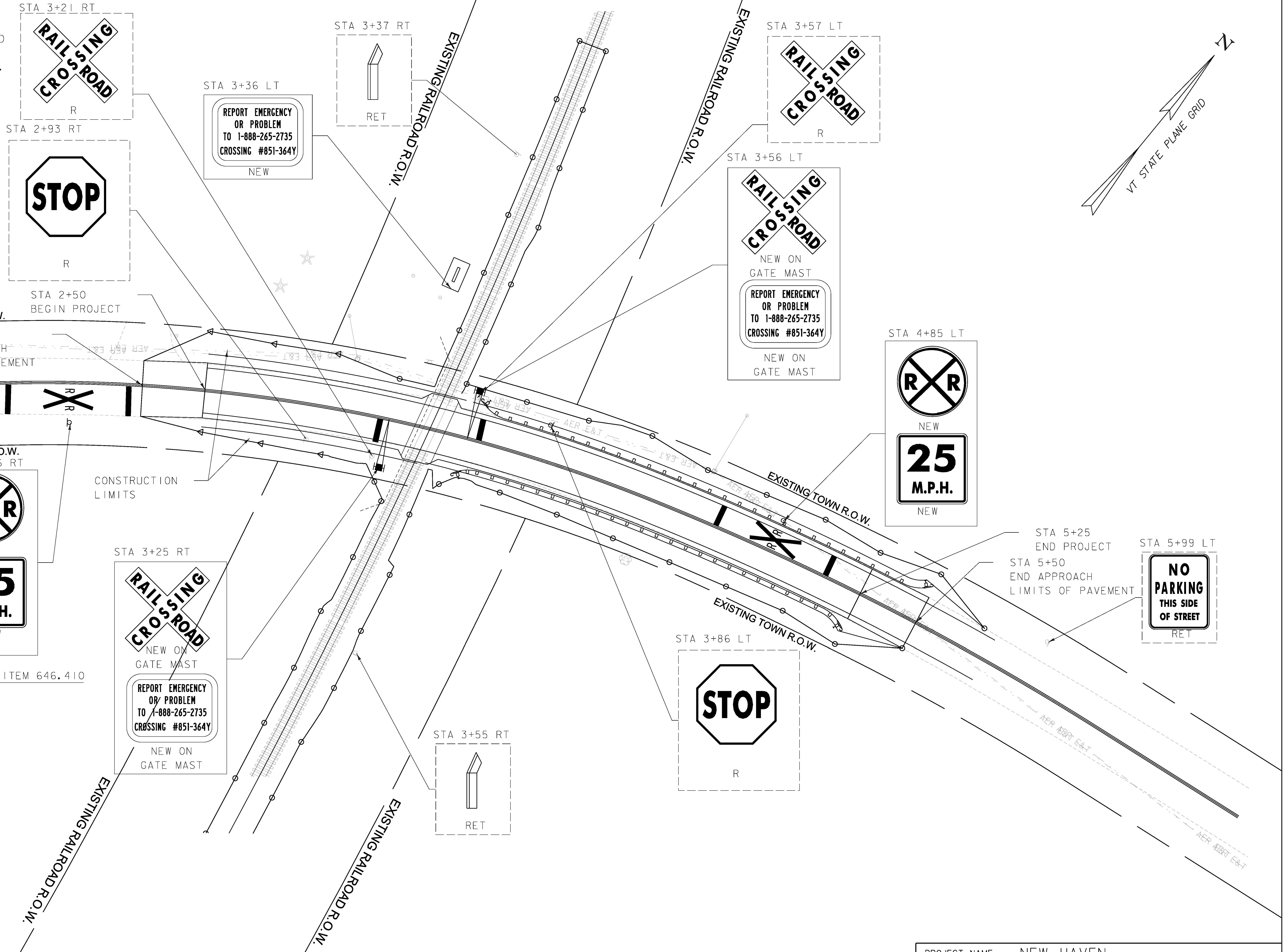
- STA 1+71 RT
- STA 2+20 RT
- STA 4+62 LT
- STA 5+09 LT

24" STOP BAR

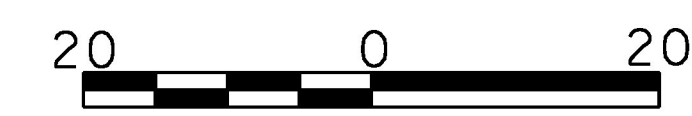
- STA 3+21 RT (9 LF)
- STA 3+61 LT (9 LF)

**NOTE:**

1. REMOVE EXISTING W10-1(2) OUTSIDE OF PROJECT LIMIT ON CAMPGROUND RD.
2. FOR TRAFFIC SIGN INFORMATION, SEE TRAFFIC SIGN SUMMARY SHEETS.



**LEGEND:**  
 - REMOVE  
 - NEW  
 - RETAIN



PROJECT NAME: NEW HAVEN	
PROJECT NUMBER: STP 2035 (19)	
FILE NAME: z13g606bdr_ts.dgn	PLOT DATE: 2/15/2017
PROJECT LEADER: R. O'BLENIS	DRAWN BY: W. TSE
DESIGNED BY: W. TSE	CHECKED BY: C. GREGORY
TRAFFIC SIGN/PAVEMENT MARKING SHEET 1	SHEET 21 OF 42