

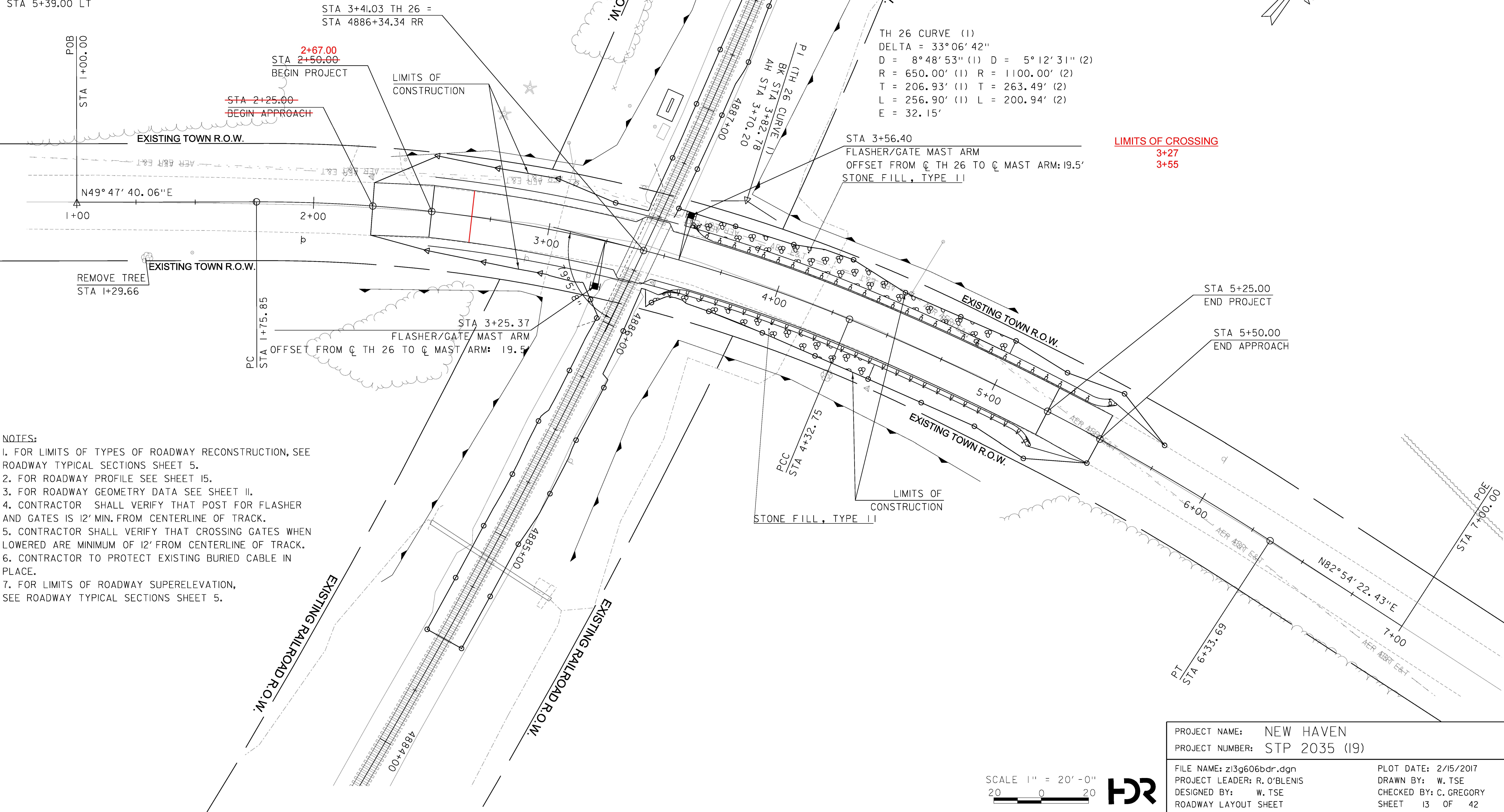
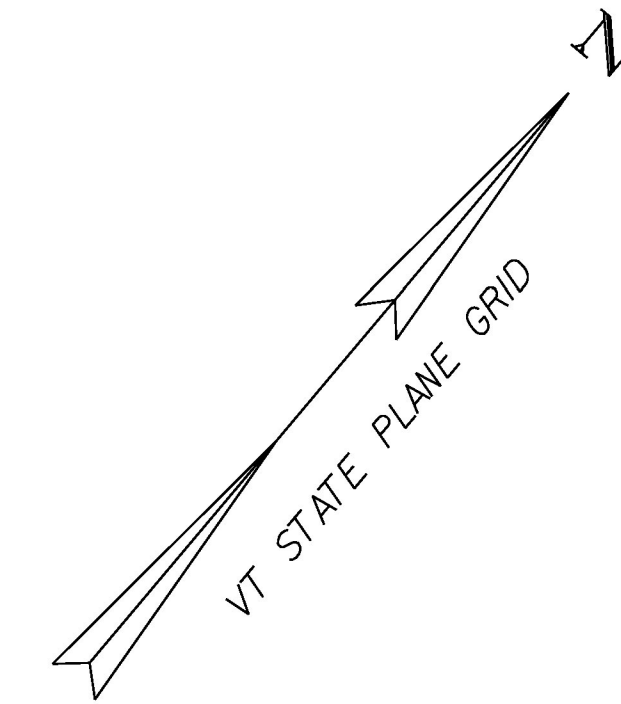
STEEL BEAM GUARDRAIL, GALVANIZED, ITEM 621.20
 STA 3+58.00 - STA 5+50.00 LT

STEEL BEAM GUARDRAIL, GALVANIZED/NESTED W/ 8 FEET POSTS, ITEM 621.207
 STA 3+53.50 - STA 5+25.00 RT

STONE FILL TYPE II, ITEM 613.11
 STA 3+55.00 - 5+00.00 LT
 STA 3+46.00 - 4+50.00 RT

ANCHOR FOR STEEL BEAM RAIL, ITEM 621.60
 STA 3+65.00 RT
 STA 3+70.00 LT
 STA 5+15.00 RT
 STA 5+39.00 LT

CAMPGROUND ROAD DOT CROSSING NUMBER 851364Y



- NOTES:
1. FOR LIMITS OF TYPES OF ROADWAY RECONSTRUCTION, SEE ROADWAY TYPICAL SECTIONS SHEET 5.
 2. FOR ROADWAY PROFILE SEE SHEET 15.
 3. FOR ROADWAY GEOMETRY DATA SEE SHEET 11.
 4. CONTRACTOR SHALL VERIFY THAT POST FOR FLASHER AND GATES IS 12' MIN. FROM CENTERLINE OF TRACK.
 5. CONTRACTOR SHALL VERIFY THAT CROSSING GATES WHEN LOWERED ARE MINIMUM OF 12' FROM CENTERLINE OF TRACK.
 6. CONTRACTOR TO PROTECT EXISTING BURIED CABLE IN PLACE.
 7. FOR LIMITS OF ROADWAY SUPERELEVATION, SEE ROADWAY TYPICAL SECTIONS SHEET 5.

LIMITS OF CROSSING
 3+27
 3+55

PROJECT NAME:	NEW HAVEN	FILE NAME:	z13g606bdr.dgn	PLOT DATE:	2/15/2017
PROJECT NUMBER:	STP 2035 (19)	PROJECT LEADER:	R. O'BLENIS	DRAWN BY:	W. TSE
		DESIGNED BY:	W. TSE	CHECKED BY:	C. GREGORY
		ROADWAY LAYOUT SHEET		SHEET	13 OF 42

SCALE 1" = 20' - 0"
 20 0 20

