

INDEX OF SHEETS

- 1 TITLE SHEET
- 2 QUANTITY SHEET
- 3-22 CLASS 2 TOWN HIGHWAY QUANTITY SHEETS
- 23 MISCELLANEOUS DETAILS
- 24 TRAFFIC CONTROL PLAN
- 25-29 TOWN HIGHWAY COUNTY MAP SHEETS

STANDARDS

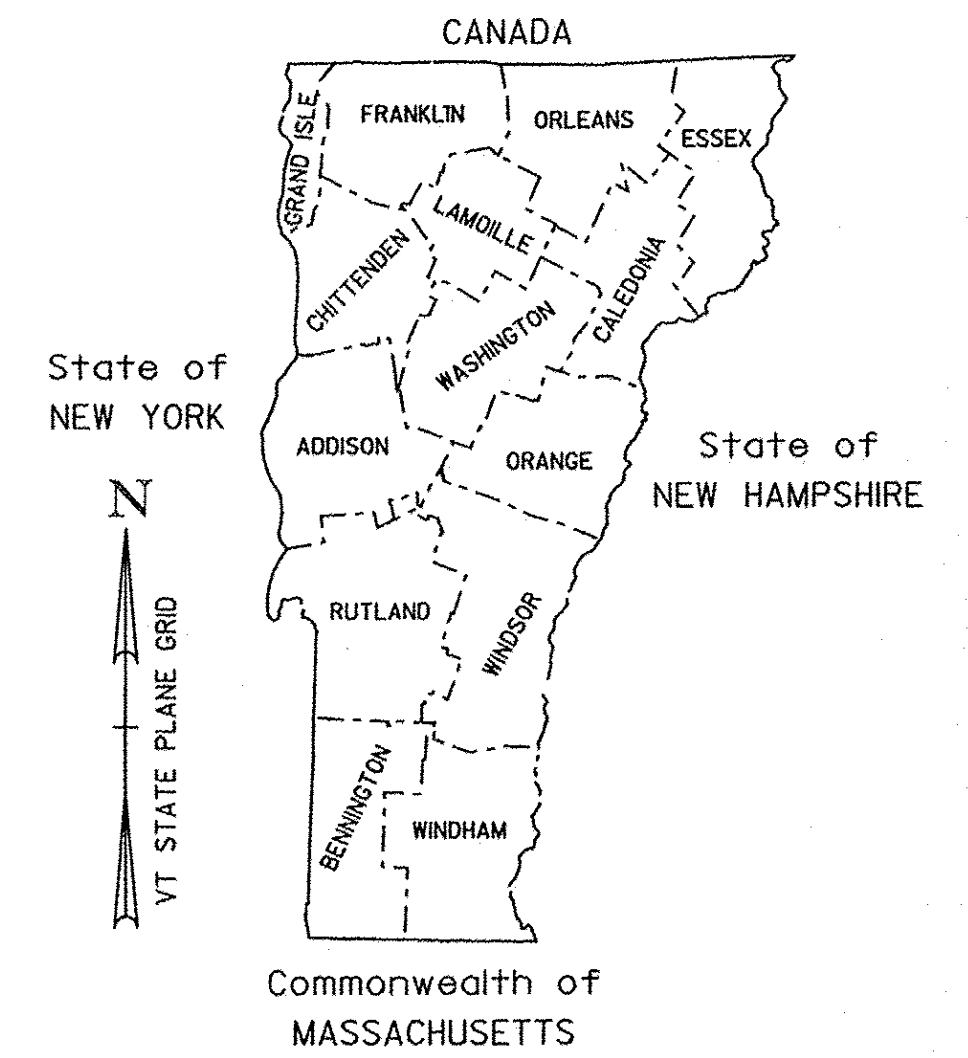
- T-1 8-6-12
- T-24 8-6-12
- T-29 8-6-12

STATE OF VERMONT AGENCY OF TRANSPORTATION



PROPOSED IMPROVEMENT

STATEWIDE CLASS 2 TOWN HIGHWAY SYSTEM MARKING



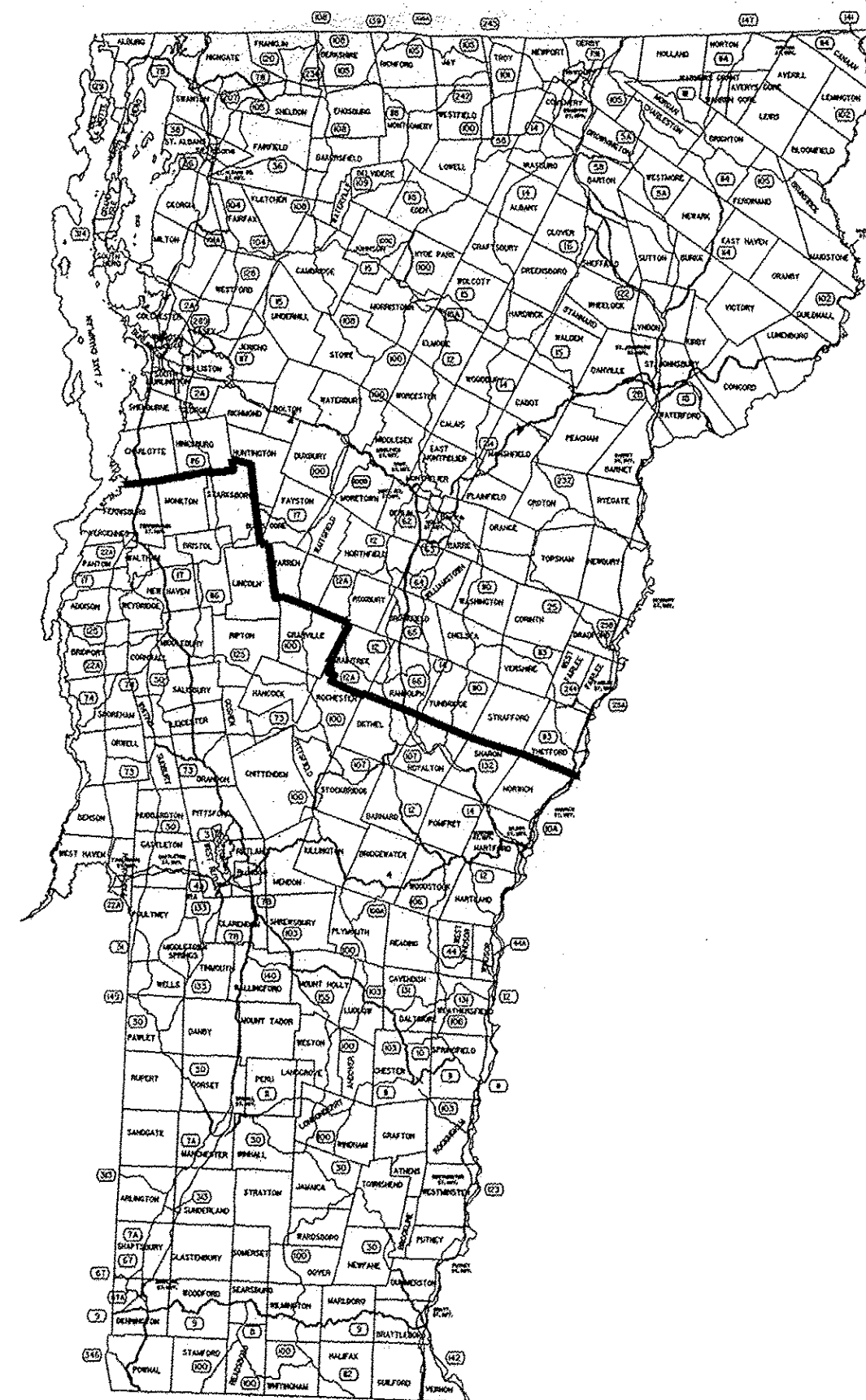
WORK TO BE PERFORMED UNDER THIS PROJECT CONSISTS OF PAINTING 4" DOUBLE YELLOW CENTERLINE MARKINGS ON CLASS 2 TOWN HIGHWAYS

LENGTH OF PROJECT 1,022.24 MILES

PROJECT DESCRIPTION

4" DOUBLE YELLOW CENTERLINE MARKINGS ON ALL PAVED CLASS 2 TOWN HIGHWAYS IN THE COUNTIES OF ADDISON, RUTLAND, BENNINGTON, WINDHAM AND WINDSOR.

RECORD PLANS	
CONTRACTOR:	HI-WAY SAFETY SYSTEMS, INC. - ROCKLAND, MA
RESIDENT ENGINEER:	MARK HAUGHWOUT
CONSTRUCTION BEGAN:	AUGUST 5, 2014
CONSTRUCTION COMPLETE:	NOVEMBER 5, 2014
RECORD PLANS BY:	MARK HAUGHWOUT & JENNA HYDE
I HEREBY CERTIFY THAT ALL THE CONSTRUCTION REQUIRED BY THIS SET OF DRAWINGS HAS BEEN ACCOMPLISHED AS INDICATED HEREIN.	
BY	<i>Mark W. Haughwout</i> RESIDENT ENGINEER
DATE	11/9/16
NOTE: Any further information concerning final quantities, amounts or other details relative to this project may be found at Central Files in the electronic archives.	



THESE PLANS ARE SUBJECT TO SUCH ENGINEERING CHANGES AS MAY BE REQUIRED BY THE FEDERAL HIGHWAY ADMINISTRATION OR THE DIRECTOR OF PROGRAM DEVELOPMENT.

CONSTRUCTION IS TO BE CARRIED ON IN ACCORDANCE WITH THESE PLANS AND THE STANDARD SPECIFICATIONS FOR CONSTRUCTION DATED 2011, AS APPROVED BY THE FEDERAL HIGHWAY ADMINISTRATION ON JULY 20, 2011 FOR USE ON THIS PROJECT, INCLUDING ALL SUBSEQUENT REVISIONS AND SUCH REVISED SPECIFICATIONS AND SPECIAL PROVISIONS AS ARE INCORPORATED IN THESE PLANS.

QUALITY ASSURANCE PROGRAM : LEVEL 3	
SURVEYED BY :	N/A
SURVEYED DATE :	N/A
DATUM	
VERTICAL	N/A
HORIZONTAL	N/A

DIRECTOR OF PROGRAM DEVELOPMENT	
APPROVED	<i>Kevin A. Marsha</i> DATE 3/12/14
PROJECT MANAGER : Patricia Coburn P.E.	
PROJECT NAME :	STATEWIDE SOUTH
PROJECT NUMBER :	HES MARK (403)
SHEET 1 OF 29 SHEETS	

SUMMARY BY COUNTY OF CLASS 2 TOWN HIGHWAYS

COUNTY	TOWN	TH NUMBER	TH NAME	TH MILEAGE	4" DOUBLE YELLOW (LINEAR FEET)
ADDISON COUNTY	ADDISON	TH-1	LAKE ST.	3.75 MILES	39,600
ADDISON COUNTY	ADDISON	TH-2	JERSEY ST. SOUTH	3.40 MILES	35,904
ADDISON COUNTY	ADDISON *NEW ROAD ADDED	TH-3	GOODRICH CORNER RD.	2.03 MILES	26,661
ADDISON COUNTY	BRIDPORT	TH-1	CROWN POINT RD.	5.45 MILES	57,552
ADDISON COUNTY	BRIDPORT	TH-2	BASIN HARBOR RD.	1.40 MILES	14,784
ADDISON COUNTY	BRIDPORT	TH-3	LAKE ST.	5.88 MILES	62,093
ADDISON COUNTY	BRISTOL	TH-1	HARDSCRABBLE RD.	2.41 MILES	25,450
ADDISON COUNTY	BRISTOL	TH-2	RIVER RD.	0.43 MILES	4,541
ADDISON COUNTY	BRISTOL	TH-3	LINCOLN RD.	1.10 MILES	11,616
ADDISON COUNTY	BRISTOL	TH-4	MONKTON RD.	2.68 MILES	28,301
ADDISON COUNTY	BRISTOL	TH-4	NORTH ST.	1.00 MILES	10,560
ADDISON COUNTY	BRISTOL	TH-5	HEWITT RD.	1.00 MILES	10,560
ADDISON COUNTY	BRISTOL	TH-5	SOUTH ST.	0.59 MILES	6,230
ADDISON COUNTY	BRISTOL	TH-6	BURPEE RD.	1.88 MILES	19,853
ADDISON COUNTY	CORNWALL	TH-1	PARKHILL RD.	0.95 MILES	10,032
ADDISON COUNTY	CORNWALL	TH-1	SOUTH BINGHAM ST.	1.25 MILES	13,200
ADDISON COUNTY	CORNWALL	TH-2	CIDER MILL RD.	1.80 MILES	19,008
ADDISON COUNTY	CORNWALL	TH-2	JAMES RD.	0.69 MILES	7,286
ADDISON COUNTY	CORNWALL	TH-3	SWAMP RD.	1.90 MILES	20,064
ADDISON COUNTY	FERRISBURGH	TH-1	GREENBUSH RD.	0.04 MILES	422
ADDISON COUNTY	FERRISBURGH	TH-1	LONG POINT RD.	1.49 MLIES	15,734
ADDISON COUNTY	FERRISBURGH	TH-1	OLD HOLLOW RD.	1.72 MILES	18,163
ADDISON COUNTY	FERRISBURGH	TH-1	STAGE RD.	1.02 MILES	10,771
ADDISON COUNTY	FERRISBURGH	TH-2	MONKTON RD.	3.46 MILES	36,538
ADDISON COUNTY	FERRISBURGH	TH-3	BASIN HARBOR RD.	4.68 MILES	49,421
ADDISON COUNTY	FERRISBURGH	TH-4	BUTTON BAY RD.	2.67 MILES	28,195
ADDISON COUNTY	FERRISBURGH	TH-5	LITTLE CHICAGO RD.	0.90 MILES	9,504
ADDISON COUNTY	FERRISBURGH	TH-6	GREENBUSH RD.	1.96 MILES	20,698
ADDISON COUNTY	FERRISBURGH	TH-7	MT PHILO RD.	0.45 MILES	4,752
ADDISON COUNTY	GOSHEN	TH-1	CAPEN HILL RD.	0.83 MILES	8,765
ADDISON COUNTY	GOSHEN	TH-1	HATHAWAY RD.	0.31 MILES	3,274
ADDISON COUNTY	GOSHEN	TH-1	MT PHILO RD.	0.65 MILES	6,864
ADDISON COUNTY	LEICESTER	TH-1	LEICESTER-WHITING RD.	3.16 MILES	33,370
ADDISON COUNTY	LEICESTER	TH-2	FERN LAKE RD.	2.35 MILES	24,816
ADDISON COUNTY	LEICESTER	TH-3	SWINGTON RD.	1.00 MILES	10,560
ADDISON COUNTY	LEICESTER	TH-4	LAKE DUNMORE RD.	3.83 MILES	40,445
ADDISON COUNTY	LEICESTER	TH-5	MAPLE ST.	0.76 MILES	8,026
SHEET TOTALS				71.36 MILES	753,586 LINEAR FEET

* SEE SHEET 6

PROJECT NAME:	STATEWIDE SOUTH
PROJECT NUMBER:	HES MARK(403)
FILE NAME:	t13e680.dgn
PROJECT LEADER:	P. COBURN
DESIGNED BY:	K. SWEET
CLASS 2 TOWN HIGHWAY QUANTITIES I	
PLOT DATE:	10-MAR-2014
DRAWN BY:	K. SWEET
CHECKED BY:	P. PELOQUIN
SHEET	3 OF 29

SUMMARY BY COUNTY OF CLASS 2 TOWN HIGHWAYS

COUNTY	TOWN	TH NUMBER	TH NAME	TH MILEAGE	4" DOUBLE YELLOW (LINEAR FEET)
ADDISON COUNTY	LINCOLN	TH-1	RIPTON RD.	0.03 MILES	317
ADDISON COUNTY	LINCOLN	TH-1	SOUTH LINCOLN RD.	1.07 MILES	11,299
ADDISON COUNTY	LINCOLN	TH-1	WEST RIVER RD.	2.29 MILES	24,182
ADDISON COUNTY	LINCOLN	TH-1	EAST RIVER RD.	1.09 MILES	11,510
ADDISON COUNTY	LINCOLN	TH-2	LINCOLN GAP RD.	2.35 MILES	24,816
ADDISON COUNTY	LINCOLN	TH-3	DOWNINGSVILLE RD.	1.45 MILES	15,312
ADDISON COUNTY	LINCOLN	TH-3	QUAKER ST.	0.90 MILES	9,504
ADDISON COUNTY	MIDDLEBURY	TH-4	WEYBRIDGE ST.	0.77 MILES	8,131
ADDISON COUNTY	MIDDLEBURY	TH-5	SEYMOUR ST.	0.96 MILES	10,138
ADDISON COUNTY	MIDDLEBURY	TH-6	WASHINGTON ST EXT.	1.06 MILES	11,194
ADDISON COUNTY	MIDDLEBURY	TH-6	WASHINGTON ST	0.30 MILES	3,168
ADDISON COUNTY	MIDDLEBURY	TH-6	PAINTER RD.	1.64 MILES	17,318
ADDISON COUNTY	MIDDLEBURY	TH-6	MUNGER RD.	1.28 MILES	13,517
ADDISON COUNTY	MIDDLEBURY	TH-7	QUARRY RD.	2.16 MILES	22,810 TOWN HAS DURABLES
ADDISON COUNTY	MIDDLEBURY	TH-7	SEMINARY ST.	0.35 MILES	3,696
ADDISON COUNTY	MIDDLEBURY	TH-7	SEMINARY ST. EXT.	0.99 MILES	10,454 TOWN HAS DURABLES
ADDISON COUNTY	MIDDLEBURY	TH-8	MERCHANTS ROW	0.10 MILES	1,056
ADDISON COUNTY	MIDDLEBURY	TH-9	HALLADAY RD.	2.00 MILES	21,120
ADDISON COUNTY	MIDDLEBURY	TH-10	SHARD VILLA RD.	0.95 MILES	10,032
ADDISON COUNTY	MIDDLEBURY	TH-10	THREE MILE BRIDGE RD.	1.17 MILES	12,355
ADDISON COUNTY	MIDDLEBURY	TH-12	CADY RD.	1.26 MILES	13,306
ADDISON COUNTY	MIDDLEBURY	TH-13	PULP MILL RD.	0.03 MILES	317
ADDISON COUNTY	MONKTON	TH-1	SILVER ST.	1.66 MILES	17,530
ADDISON COUNTY	MONKTON	TH-1	MONKTON RD.	5.92 MILES	62,515
ADDISON COUNTY	MONKTON	TH-1	MONKTON RD. RDG	0.34 MILES	3,590
ADDISON COUNTY	MONKTON	TH-2	HAND RD.	0.05 MILES	528
ADDISON COUNTY	MONKTON	TH-2	HOLLOW RD.	2.93 MILES	30,941
ADDISON COUNTY	MONKTON	TH-3	BRISTOL RD.	5.09 MILES	53,750
ADDISON COUNTY	MONKTON	TH-4	STATES PRISON HOLLOW RD.	1.50 MILES	15,840
ADDISON COUNTY	MONKTON	TH-5	HARDSCRABBLE RD.	0.67 MILES	7,075
ADDISON COUNTY	MONKTON	TH-6	TYLER BRIDGE RD.	2.17 MILES	22,915
ADDISON COUNTY	MONKTON	TH-7	PARKS-HURLBURT RD.	0.61 MILES	6,442
ADDISON COUNTY	MIDDLEBURY	TH-II	UPPER PLAINS RD		ADDED SINCE IT IS PARTIALLY PAVED
ADDISON COUNTY	SALISBURY	TH-5	UPPER PLAINS RD		ADDED SINCE IT IS PARTIALLY PAVED
SHEET TOTALS				45.14 MILES	476,678 LINEAR FEET

PROJECT NAME: STATWIDE SOUTH	PLOT DATE: 10-MAR-2014
PROJECT NUMBER: HES MARK(403)	DRAWN BY: K. SWEET
FILE NAME: t13e680.dgn	CHECKED BY: P. PELOQUIN
PROJECT LEADER: P. COBURN	SHEET 4 OF 29
DESIGNED BY: K. SWEET	
CLASS 2 TOWN HIGHWAY QUANTITIES 2	

SUMMARY BY COUNTY OF CLASS 2 TOWN HIGHWAYS

COUNTY	TOWN	TH NUMBER	TH NAME	TH MILEAGE	4" DOUBLE YELLOW (LINEAR FEET)
ADDISON COUNTY	NEW HAVEN	TH-1	HALLOCK RD.	1.75 MILES	18,480
ADDISON COUNTY	NEW HAVEN	TH-1	QUACKER VILLAGE RD.	0.75 MILES	7,920
ADDISON COUNTY	NEW HAVEN	TH-2	RIVER RD.	4.72 MILES	49,843
ADDISON COUNTY	NEW HAVEN	TH-3	TOWN HILL RD.	1.81 MILES	19,114
ADDISON COUNTY	NEW HAVEN	TH-4	MUNGER ST.	3.06 MILES	32,314
ADDISON COUNTY	NEW HAVEN	TH-5	DOG TEAM RD.	1.86 MILES	19,642
ADDISON COUNTY	NEW HAVEN	TH-6	NORTH ST.	3.72 MILES	39,283
ADDISON COUNTY	ORWELL	TH-1	NORTH ORWELL RD.	3.55 MILES	37,488
ADDISON COUNTY	ORWELL	TH-2	ROUTE 73	0.35 MILES	3,696
ADDISON COUNTY	ORWELL	TH-2	CHIPMANS POINT RD.	0.75 MILES	7,920
ADDISON COUNTY	ORWELL	TH-2	MOUNT INDEPENDENCE RD.	3.00 MILES	31,680
ADDISON COUNTY	ORWELL	TH-3	ROUTE 73	4.60 MILES	48,576
ADDISON COUNTY	ORWELL	TH-4	MOUNT INDEPENDENCE RD.	1.54 MILES	16,262
ADDISON COUNTY	PANTON	TH-1	PEASE RD.	0.91 MILES	9,610
ADDISON COUNTY	PANTON	TH-1	PANTON RD.	3.71 MILES	39,178
ADDISON COUNTY	PANTON	TH-1	JERSEY ST.	0.59 MILES	6,230
ADDISON COUNTY	PANTON	TH-1	LAKE RD.	2.25 MILES	23,760
ADDISON COUNTY	PANTON	TH-2	BUTTON BAY RD.	0.30 MILES	3,168
ADDISON COUNTY	PANTON	TH-2	JERSEY ST.	0.46 MILES	4,858
ADDISON COUNTY	PANTON	TH-3	BASIN HARBOR RD.	0.53 MILES	5,597
ADDISON COUNTY	PANTON	TH-4	JERSEY ST.	2.03 MILES	21,437
ADDISON COUNTY	RIPTON	TH-1	LINCOLN RD.	1.89 MILES	19,958
ADDISON COUNTY	SALISBURY	TH-1	CREEK RD.	0.69 MILES	7,286
ADDISON COUNTY	SALISBURY	TH-1	MAPLE ST.	0.65 MILES	6,864
ADDISON COUNTY	SALISBURY	TH-1	WEST SALISBURY RD.	3.67 MILES	38,755
ADDISON COUNTY	SALISBURY	TH-2	SHARD VILLA RD.	2.25 MILES	23,760
ADDISON COUNTY	SALISBURY	TH-3	LAKE DUNMORE RD.	4.25 MILES	44,880
ADDISON COUNTY	SALISBURY	TH-4	WEST SHORE RD.	2.09 MILES	22,570
ADDISON COUNTY	SALISBURY	TH-5	UPPER PLAINS RD.	1.67 MILES	17,635
ADDISON COUNTY	SHOREHAM	TH-1	RICHVILLE RD.	4.80 MILES	50,688
ADDISON COUNTY	SHOREHAM	TH-2	ROUTE 73	0.90 MILES	9,504
ADDISON COUNTY	SHOREHAM	TH-3	NORTH ORWELL RD.	1.65 MILES	17,424
ADDISON COUNTY	SHOREHAM	TH-4	LAPHAM BAY RD.	1.58 MILES	16,685
SHEET TOTALS				68.33 MILES	721,566 LINEAR FEET

PROJECT NAME: STATEWIDE SOUTH
PROJECT NUMBER: HES MARK(403)
FILE NAME: t13e680.dgn
PROJECT LEADER: P. COBURN
DESIGNED BY: K. SWEET
CLASS 2 TOWN HIGHWAY QUANTITIES 3
PLOT DATE: 10-MAR-2014
DRAWN BY: K. SWEET
CHECKED BY: P. PELOQUIN
SHEET 5 OF 29

SUMMARY BY COUNTY OF CLASS 2 TOWN HIGHWAYS

COUNTY	TOWN	TH NUMBER	TH NAME	TH MILEAGE	4" DOUBLE YELLOW (LINEAR FEET)
RUTLAND COUNTY	BENSON	TH-1	HULETT HILL RD.	0.70 MILES	7,392
RUTLAND COUNTY	BENSON	TH-1	STAGE RD.	2.57 MILES	27,139
RUTLAND COUNTY	BENSON	TH-2	ROUTE 144	4.24 MILES	44,774
RUTLAND COUNTY	BENSON	TH-3	LAKE RD.	3.84 MILES	40,550
RUTLAND COUNTY	BENSON	TH-4	SUNSET LAKE RD.	0.63 MILES	6,653
RUTLAND COUNTY	BRANDON	TH-4	PEARL ST.	1.73 MILES	18,269
RUTLAND COUNTY	BRANDON	TH-5	CARVER ST.	0.04 MILES	422
RUTLAND COUNTY	BRANDON	TH-5	FLORENCE RD.	0.69 MILES	7,286
RUTLAND COUNTY	BRANDON	TH-5	UNION ST.	2.89 MILES	30,518
RUTLAND COUNTY	BRANDON	TH-6	NORTH ST.	1.33 MILES	14,045
RUTLAND COUNTY	BRANDON	TH-7	ARNOLD DISTRICT RD.	2.47 MILES	26,083
RUTLAND COUNTY	BRANDON	TH-8	MCCONNELL RD.	3.30 MILES	34,848
RUTLAND COUNTY	BRANDON	TH-9	HIGH POND RD.	2.42 MILES	25,555
RUTLAND COUNTY	CASTLETON	TH-2	CREEK RD.	2.48 MILES	26,189
RUTLAND COUNTY	CASTLETON	TH-2	WEST CASTLETON RD.	2.34 MILES	24,710
RUTLAND COUNTY	CASTLETON	TH-3	EAST HUBBARDTON RD.	4.97 MILES	52,483
RUTLAND COUNTY	CASTLETON	TH-4	SOUTH RD.	2.65 MILES	27,984
RUTLAND COUNTY	CASTLETON	TH-5	NORTH RD.	4.12 MILES	43,507
RUTLAND COUNTY	CASTLETON	TH-6	BLISSVILLE RD.	1.30 MILES	13,728
RUTLAND COUNTY	CHITTENDEN	TH-1	CHITTENDEN RD.	2.23 MILES	23,549
RUTLAND COUNTY	CHITTENDEN	TH-1	DAM RD.	2.16 MILES	22,810
RUTLAND COUNTY	CHITTENDEN	TH-2	POWERHOUSE RD.	1.43 MILES	15,101
RUTLAND COUNTY	CHITTENDEN	TH-2	FURNACE BROOK RD.	0.74 MILES	7,814
RUTLAND COUNTY	CHITTENDEN	TH-2	HOLDEN RD.	2.38 MILES	25,133
RUTLAND COUNTY	CHITTENDEN	TH-3	MEADOW LAKE DR.	0.04 MILES	422
RUTLAND COUNTY	CHITTENDEN	TH-4	MOUNTAIN TOP RD.	1.80 MILES	19,008
RUTLAND COUNTY	CLARENDON	TH-1	MIDDLE RD.	4.11 MILES	43,402
RUTLAND COUNTY	CLARENDON	TH-2	CREEK RD.	4.67 MILES	49,315
RUTLAND COUNTY	CLARENDON	TH-3	WALKER MOUNTAIN RD.	6.21 MILES	65,578
RUTLAND COUNTY	CLARENDON	TH-4	COLD RIVER RD.	0.95 MILES	10,032
RUTLAND COUNTY	CLARENDON	TH-4	NORTH SHREWSBURY RD.	0.99 MILES	10,454
RUTLAND COUNTY	CLARENDON	TH-6	COLD RIVER RD.	0.54 MILES	5,702
RUTLAND COUNTY	CLARENDON	TH-7	AIRPORT RD.	1.76 MILES	18,586
RUTLAND COUNTY	CLARENDON	TH-8	EAST CLARENDON RD.	3.26 MILES	34,426
SHEET TOTALS				77.98 MILES	823,467 LINEAR FEET

PROJECT NAME:	STATEWIDE SOUTH
PROJECT NUMBER:	HES MARK(403)
FILE NAME:	t13e680.dgn
PROJECT LEADER:	P. COBURN
DESIGNED BY:	K. SWEET
CLASS 2 TOWN HIGHWAY QUANTITIES	8
PLOT DATE:	10-MAR-2014
DRAWN BY:	K. SWEET
CHECKED BY:	P. PELOQUIN
SHEET	10 OF 29

SUMMARY BY COUNTY OF CLASS 2 TOWN HIGHWAYS

COUNTY	TOWN	TH NUMBER	TH NAME	TH MILEAGE	4" DOUBLE YELLOW (LINEAR FEET)
RUTLAND COUNTY	DANBY	TH-1	BROOK RD.	4.14 MILES	43,718
RUTLAND COUNTY	DANBY	TH-1	SOUTH MAIN ST.	0.02 MILES	211
RUTLAND COUNTY	DANBY	TH-1	DANBY-PAWLET RD.	4.23 MILES	44,669
RUTLAND COUNTY	DANBY	TH-1	MT TABOR AVE	0.10 MILES	1,056
RUTLAND COUNTY	DANBY	TH-2	TINMOUTH RD.	3.23 MILES	34,109
RUTLAND COUNTY	DANBY	TH-3	SCOTTSVILLE RD.	0.75 MILES	7,920
RUTLAND COUNTY	FAIR HAVEN	TH-4	AIRPORT RD.	0.02 MILES	211
RUTLAND COUNTY	FAIR HAVEN	TH-4	FOURTH ST.	0.62 MILES	6,547
RUTLAND COUNTY	FAIR HAVEN	TH-5	SCOTCH HILL RD.	3.41 MILES	36,010
RUTLAND COUNTY	FAIR HAVEN	TH-6	WEST ST.	1.27 MILES	13,411
RUTLAND COUNTY	FAIR HAVEN	TH-7	BOLGER RD.	1.27 MILES	13,411
RUTLAND COUNTY	FAIR HAVEN	TH-9	SWAMP RD.	0.15 MILES	16,364 1,584 PAVED MORE
RUTLAND COUNTY	HUBBARDTON	TH-1	HORTONIA RD.	4.00 MILES	42,240
RUTLAND COUNTY	HUBBARDTON	TH-1	ROUTE 144	0.40 MILES	4,224
RUTLAND COUNTY	HUBBARDTON	TH-2	MONUMENT HILL RD.	5.15 MILES	72,826 54,384 PAVED MORE
RUTLAND COUNTY	HUBBARDTON	TH-3	ROUTE 144	0.52 MILES	5,491
RUTLAND COUNTY	HUBBARDTON	TH-4	HIGH POND RD.	0.20 MILES	2,112
RUTLAND COUNTY	MENDON	TH-1	MEADOW LAKE DR.	1.13 MILES	11,933
RUTLAND COUNTY	MENDON	TH-2	TOWNLINE RD.	0.88 MILES	9,293
RUTLAND COUNTY	MENDON	TH-2	NOTCH RD.	1.51 MILES	15,946
RUTLAND COUNTY	MENDON	TH-3	PARK LANE	0.47 MILES	4,962
RUTLAND COUNTY	MIDDLETOWN SPRINGS	TH-1	WEST ST.	3.20 MILES	33,792
RUTLAND COUNTY	MOUNT HOLLY	TH-1	BELMONT RD.	2.41 MILES	25,450
RUTLAND COUNTY	MOUNT HOLLY	TH-1	HORTONVILLE RD.	3.28 MILES	34,637
RUTLAND COUNTY	MOUNT HOLLY	TH-1	TARBELLVILLE RD.	1.09 MILES	11,510
RUTLAND COUNTY	MOUNT HOLLY	TH-2	CHURCH ST.	0.17 MILES	1,795
RUTLAND COUNTY	MOUNT HOLLY	TH-2	HEALDVILLE RD.	3.66 MILES	38,650
RUTLAND COUNTY	MOUNT TABOR	TH-1	BROOKLYN RD.	0.79 MILES	8,342
RUTLAND COUNTY	MOUNT TABOR	TH-1	MOUNT TABOR AVE	0.06 MILES	634
RUTLAND COUNTY	MOUNT TABOR	TH-2	SOUTH END RD.	1.17 MILES	12,355
RUTLAND COUNTY	PAWLET	TH-1	ROUTE 153	6.06 MILES	63,994
RUTLAND COUNTY	PAWLET	TH-2	BUTTONS FALLS RD.	1.72 MILES	18,163
RUTLAND COUNTY	PAWLET	TH-3	RIVER RD.	1.61 MILES	17,002
RUTLAND COUNTY	PAWLET	TH-4	DANBY-PAWLET RD	1.66 MILES	17,530
RUTLAND COUNTY	PAWLET	TH-5	NORTH PAWLET RD.	1.76 MILES	18,586
SHEET TOTALS				62.11 MILES	655,882 LINEAR FEET

PROJECT NAME: STATEWIDE SOUTH	
PROJECT NUMBER: HES MARK(403)	
FILE NAME: t13e680.dgn	PLOT DATE: 10-MAR-2014
PROJECT LEADER: P. COBURN	DRAWN BY: K. SWEET
DESIGNED BY: K. SWEET	CHECKED BY: P. PELOQUIN
CLASS 2 TOWN HIGHWAY QUANTITIES 9	SHEET 11 OF 29

SUMMARY BY COUNTY OF CLASS 2 TOWN HIGHWAYS

COUNTY	TOWN	TH NUMBER	TH NAME	TH MILEAGE	4" DOUBLE YELLOW (LINEAR FEET)
RUTLAND COUNTY	PITTSFORD	TH-1	WEST CREEK RD.	5.49 MILES	57,974
RUTLAND COUNTY	PITTSFORD	TH-2	KENDALL HILL RD.	0.98 MILES	10,349
RUTLAND COUNTY	PITTSFORD	TH-3	FURNACE RD.	2.80 MILES	29,568
RUTLAND COUNTY	PITTSFORD	TH-4	CHITTENDEN RD.	0.60 MILES	6,336
RUTLAND COUNTY	PITTSFORD	TH-5	ARCH ST.	0.90 MILES	9,504
RUTLAND COUNTY	PITTSFORD	TH-6	CORN HILL RD.	2.10 MILES	22,176
RUTLAND COUNTY	PITTSFORD	TH-7	MEADOW LAKE DR	0.18 MILES	1,901
RUTLAND COUNTY	PITTSFORD	TH-8	WHIPPLE HOLLOW RD.	4.02 MILES	42,451
RUTLAND COUNTY	POULTNEY	TH-2	EAST MAIN ST.	1.14 MILES	12,030
RUTLAND COUNTY	POULTNEY	TH-2	ROUTE 140	3.38 MILES	35,093
RUTLAND COUNTY	POULTNEY	TH-3	COLLEGE STREET NORTH	0.41 MILES	4,330
RUTLAND COUNTY	POULTNEY	TH-3	EAST MAIN ST.	0.45 MILES	4,752
RUTLAND COUNTY	POULTNEY	TH-3	MAIN ST.	0.35 MILES	3,696
RUTLAND COUNTY	POULTNEY	TH-3	YORK ST.	0.36 MILES	3,802
RUTLAND COUNTY	POULTNEY	TH-4	BENTLEY AVE	0.04 MILES	422
RUTLAND COUNTY	POULTNEY	TH-4	COLLEGE STREET SOUTH	0.12 MILES	1,267
RUTLAND COUNTY	POULTNEY	TH-4	GRANVILLE ST.	0.67 MILES	7,075
RUTLAND COUNTY	POULTNEY	TH-5	YORK ST.	0.37 MILES	3,907
RUTLAND COUNTY	POULTNEY	TH-5	YORK ST. EXTENTION	3.16 MILES	33,370
RUTLAND COUNTY	POULTNEY	TH-6	THRALL RD.	1.38 MILES	14,573
RUTLAND COUNTY	POULTNEY	TH-6	DEPOT ST.	0.11 MILES	1,162
RUTLAND COUNTY	POULTNEY	TH-6	ON THE GREEN	0.19 MILES	2,006
RUTLAND COUNTY	POULTNEY	TH-7	BENTLEY AVE	0.39 MILES	4,118
RUTLAND COUNTY	POULTNEY	TH-7	SALTIS RD.	0.91 MILES	9,610
RUTLAND COUNTY	POULTNEY	TH-8	BLISSVILLE RD.	1.75 MILES	18,480
RUTLAND COUNTY	POULTNEY	TH-8	CHURCH ST.	0.35 MILES	3,696
RUTLAND COUNTY	PROCTOR	TH-2	CROSS ST.	0.14 MILES	1,478
RUTLAND COUNTY	PROCTOR	TH-2	FLORENCE RD.	2.52 MILES	26,611
RUTLAND COUNTY	PROCTOR	TH-2	NORTH ST.	0.30 MILES	3,168
RUTLAND COUNTY	PROCTOR	TH-2	SCHOOL ST.+SCHOOL ST.FORK	0.14 MILES	1,478
RUTLAND COUNTY	PROCTOR	TH-2	WEST ST.	3.50 MILES	36,960
RUTLAND COUNTY	PROCTOR	TH-3	MAIN ST.+MAIN ST.FORK	0.47 MILES	4,963
SHEET TOTALS				39.67 MILES	418,906 LINEAR FEET

PROJECT NAME:	STATEWIDE SOUTH
PROJECT NUMBER:	HES MARK(403)
FILE NAME:	t13e680.dgn
PROJECT LEADER:	P. COBURN
DESIGNED BY:	K. SWEET
CLASS 2 TOWN HIGHWAY QUANTITIES	10
PLOT DATE:	10-MAR-2014
DRAWN BY:	K. SWEET
CHECKED BY:	P. PELOQUIN
SHEET	12 OF 29

SUMMARY BY COUNTY OF CLASS 2 TOWN HIGHWAYS

COUNTY	TOWN	TH NUMBER	TH NAME	TH MILEAGE	4" DOUBLE YELLOW (LINEAR FEET)
RUTLAND COUNTY	RUTLAND CITY	TH-3	STRONGS AVE	0.61 MILES	6,441
RUTLAND COUNTY	RUTLAND CITY	TH-3	MERCHANTS ROW	0.17 MILES	1,795
RUTLAND COUNTY	RUTLAND CITY	TH-4	WEST ST.	0.76 MILES	8,026
RUTLAND COUNTY	RUTLAND CITY	TH-5	FIELD AVE	0.53 MILES	5,597
RUTLAND COUNTY	RUTLAND CITY	TH-6	GROVE ST.	1.47 MILES	15,523
RUTLAND COUNTY	RUTLAND CITY	TH-7	PIERPOINT AVE	0.25 MILES	2,640
RUTLAND COUNTY	RUTLAND CITY	TH-7	CRESCENT ST.	0.91 MILES	9,610
RUTLAND COUNTY	RUTLAND CITY	TH-7	FAIRVIEW AVE	0.15 MILES	1,584
RUTLAND COUNTY	RUTLAND CITY	TH-8	MADISON ST.	0.23 MILES	2,429
RUTLAND COUNTY	RUTLAND CITY	TH-8	RIVER ST.	0.86 MILES	9,082
RUTLAND COUNTY	RUTLAND CITY	TH-9	ALLEN ST.	0.77 MILES	8,131
RUTLAND COUNTY	RUTLAND CITY	TH-9	STRATTON RD.	1.33 MILES	14,045
RUTLAND COUNTY	RUTLAND CITY	TH-10	DORR DRIVE	1.54 MILES	16,262
RUTLAND COUNTY	RUTLAND CITY	TH-10	RIPLEY RD.	0.20 MILES	2,112
RUTLAND COUNTY	RUTLAND CITY	TH-11	KILLINGTON AVE	1.37 MILES	14,467
RUTLAND COUNTY	RUTLAND CITY	TH-12	PARK ST.	0.75 MILES	7,920
RUTLAND COUNTY	RUTLAND CITY	TH-13	PINE ST.	0.14 MILES	1,478
RUTLAND COUNTY	RUTLAND CITY	TH-13	FOREST ST.	0.93 MILES	9,821
RUTLAND COUNTY	RUTLAND CITY	TH-14	EAST ST.	0.61 MILES	6,442
RUTLAND COUNTY	RUTLAND CITY	TH-14	JACKSON AVE	0.20 MILES	2,112
RUTLAND COUNTY	RUTLAND TOWN	TH-1	EAST PITTSFORD RD.	3.20 MILES	33,792
RUTLAND COUNTY	RUTLAND TOWN	TH-2	CREEK RD.	1.04 MILES	10,982
RUTLAND COUNTY	RUTLAND TOWN	TH-3	MIDDLE RD.	0.32 MILES	3,379
RUTLAND COUNTY	RUTLAND TOWN	TH-4	NORTH GROVE ST.	2.75 MILES	29,040
RUTLAND COUNTY	RUTLAND TOWN	TH-5	COLD RIVER RD.	1.78 MILES	18,797
RUTLAND COUNTY	RUTLAND TOWN	TH-6	WEST PROCTOR RD.	0.88 MILES	9,293
RUTLAND COUNTY	RUTLAND TOWN	TH-7	MEADOW LAKE DRIVE	0.43 MILES	4,541
RUTLAND COUNTY	RUTLAND TOWN	TH-8	TOWN LINE RD.	0.92 MILES	9,715
RUTLAND COUNTY	RUTLAND TOWN	TH-9	POST RD.	1.38 MILES	14,573
RUTLAND COUNTY	RUTLAND TOWN	TH-9	POST RD. EXTENSION	0.30 MILES	3,168
RUTLAND COUNTY	RUTLAND TOWN	TH-9	PARK LANE	0.48 MILES	5,069
RUTLAND COUNTY	RUTLAND TOWN	TH-10	KILLINGTON AVE	0.47 MILES	4,963
RUTLAND COUNTY	RUTLAND TOWN	TH-11	MCKINLEY AVE	1.10 MILES	11,616
SHEET TOTALS				28.83 MILES	304,445 LINEAR FEET

PROJECT NAME: STATEWIDE SOUTH	
PROJECT NUMBER: HES MARK(403)	
FILE NAME: t13e680.dgn	PLOT DATE: 10-MAR-2014
PROJECT LEADER: P. COBURN	DRAWN BY: K. SWEET
DESIGNED BY: K. SWEET	CHECKED BY: P. PELOQUIN
CLASS 2 TOWN HIGHWAY QUANTITIES II	SHEET 13 OF 29

SUMMARY BY COUNTY OF CLASS 2 TOWN HIGHWAYS

COUNTY	TOWN	TH NUMBER	TH NAME	TH MILEAGE	4" DOUBLE YELLOW (LINEAR FEET)
RUTLAND COUNTY	KILLINGTON	TH-1	RIVER RD.	1.32 MILES	13,939
RUTLAND COUNTY	KILLINGTON	TH-1	RIVER RD. FORK	0.04 MILES	422
RUTLAND COUNTY	KILLINGTON	TH-2	KILLINGTON RD.	2.97 MILES	31,363
RUTLAND COUNTY	KILLINGTON	TH-3	WEST HILL RD.	0.72 MILES	7,603
RUTLAND COUNTY	SHREWSBURY	TH-1	COLD RIVER RD.	6.69 MILES	70,646
RUTLAND COUNTY	SHREWSBURY	TH-2	LINCOLN HILL RD.	0.34 MILES	3,590
RUTLAND COUNTY	SHREWSBURY	TH-2	TOWN HILL RD.	1.74 MILES	18,374
RUTLAND COUNTY	SHREWSBURY	TH-2	NORTHAM RD.	2.64 MILES	27,878
RUTLAND COUNTY	SHREWSBURY	TH-3	EASTHAM RD.	1.29 MILES	13,622
RUTLAND COUNTY	SHREWSBURY	TH-3	MOUNT HOLLY RD.	0.80 MILES	8,448
RUTLAND COUNTY	SHREWSBURY	TH-4	LINCOLN HILL RD.	2.23 MILES	23,549
RUTLAND COUNTY	SUDBURY	TH-1	BURR POND RD.	3.46 MILES	36,538
RUTLAND COUNTY	SUDBURY	TH-2	LAKE HORTONIA RD.	1.75 MILES	18,480
RUTLAND COUNTY	SUDBURY	TH-4	SAWYER-NEEDHAM RD.	1.30 MILES	13,728
RUTLAND COUNTY	TINMOUTH	TH-1	ROUTE 140	5.91 MILES	62,410
RUTLAND COUNTY	TINMOUTH	TH-2	MOUNTAIN VIEW RD.	3.55 MILES	37,488
RUTLAND COUNTY	TINMOUTH	TH-3	EAST RD.	3.46 MILES	36,538
RUTLAND COUNTY	TINMOUTH	TH-5	EAST WELLS RD.	0.06 MILES	634
RUTLAND COUNTY	WALLINGFORD	TH-1	DEPOT ST.	0.16 MILES	1,690
RUTLAND COUNTY	WALLINGFORD	TH-1	ROUTE 140 WEST	2.26 MILES	23,866
RUTLAND COUNTY	WALLINGFORD	TH-2	CREEK RD.	1.34 MILES	14,150
RUTLAND COUNTY	WALLINGFORD	TH-2	MAPLE ST.	0.13 MILES	1,373
RUTLAND COUNTY	WELLS	TH-1	EAST WELLS RD.	4.59 MILES	48,470
RUTLAND COUNTY	WELLS	TH-2	NORTH ST.	1.94 MILES	20,486
RUTLAND COUNTY	WELLS	TH-2	WEST LAKE RD.	1.38 MILES	14,573
RUTLAND COUNTY	WELLS	TH-2	SOUTH ST.	0.75 MILES	7,920
RUTLAND COUNTY	WELLS	TH-2	BULL FROG HOLLOW RD.	0.35 MILES	3,696 DIRT/GRAVEL
RUTLAND COUNTY	WELLS	TH-3	WEST LAKE RD.	0.26 MILES	2,746
RUTLAND COUNTY	WEST HAVEN	TH-1	MAIN RD.	2.03 MILES	21,437
RUTLAND COUNTY	WEST HAVEN	TH-1	STAGE RD.	0.17 MILES	1,795
RUTLAND COUNTY	WEST HAVEN	TH-2	MAIN RD.	3.91 MILES	41,290
RUTLAND COUNTY	WEST HAVEN	TH-3	BOOK RD.	2.18 MILES	23,021
RUTLAND COUNTY	WEST RUTLAND	TH-3	WHIPPLE HOLLOW RD.	2.42 MILES	25,555
RUTLAND COUNTY	WEST RUTLAND	TH-3	MARBLE ST.	2.70 MILES	28,512
RUTLAND COUNTY	WEST RUTLAND	TH-3	PLEASANT ST.	0.41 MILES	4,330 DIRT/GRAVEL
RUTLAND COUNTY	WEST RUTLAND	TH-4	WHIPPLE HOLLOW RD.	1.41 MILES	14,890
SHEET TOTALS				68.66 MILES	725,050 LINEAR FEET
RUTLAND COUNTY TOTALS				277.25 MILES	2,927,750 LINEAR FEET

PROJECT NAME: STATEWIDE SOUTH
PROJECT NUMBER: HES MARK(403)

FILE NAME: t13e680.dgn
PROJECT LEADER: P. COBURN
DESIGNED BY: K. SWEET
CLASS 2 TOWN HIGHWAY QUANTITIES I2

PLOT DATE: 26-MAR-2014
DRAWN BY: K. SWEET
CHECKED BY: P. PELOQUIN
SHEET 14 OF 29

SUMMARY BY COUNTY OF CLASS 2 TOWN HIGHWAYS

COUNTY	TOWN	TH NUMBER	TH NAME	TH MILEAGE	4" DOUBLE YELLOW (LINEAR FEET)
WINDHAM COUNTY	ATHENS	TH-1	ROUTE 35	4.13 MILES	43,613
WINDHAM COUNTY	ATHENS	TH-2	BROOKLINE RD.	1.43 MILES	15,101
WINDHAM COUNTY	BRATTLEBORO	TH-5	UPPER DUMMERSTON RD.	2.85 MILES	30,096
WINDHAM COUNTY	BRATTLEBORO	TH-6	GREENLEAF ST.	0.75 MILES	7,920
WINDHAM COUNTY	BRATTLEBORO	TH-6	HINESBURG RD.	3.05 MILES	32,208
WINDHAM COUNTY	BRATTLEBORO	TH-7	BRIDGE ST.	0.08 MILES	845 PAINTED BY TOWN
WINDHAM COUNTY	BRATTLEBORO	TH-9	OLD GUILFORD RD.	0.89 MILES	9,398
WINDHAM COUNTY	BRATTLEBORO	TH-9	SOUTH MAIN ST.	1.17 MILES	12,355
WINDHAM COUNTY	BRATTLEBORO	TH-10	GUILFORD ST.	0.47 MILES	4,963
WINDHAM COUNTY	BRATTLEBORO	TH-10	MAPLE ST.	0.70 MILES	7,392
WINDHAM COUNTY	BRATTLEBORO	TH-10	FAIRVIEW ST.	0.50 MILES	5,280
WINDHAM COUNTY	BRATTLEBORO	TH-11	ELM ST.	0.23 MILES	2,429 PAINTED BY TOWN
WINDHAM COUNTY	BRATTLEBORO	TH-11	ELLIOT ST.	0.17 MILES	1,795 PAINTED BY TOWN
WINDHAM COUNTY	BROOKLINE	TH-1	GRASSY BROOK RD.	4.95 MILES	52,272
WINDHAM COUNTY	DOVER	TH-1	DOVER HILL RD.	4.25 MILES	44,880
WINDHAM COUNTY	DOVER	TH-1	EAST DOVER RD.	0.12 MILES	1,267
WINDHAM COUNTY	DOVER	TH-2	HANDLE RD.	2.00 MILES	21,120
WINDHAM COUNTY	DOVER	TH-3	HANDLE RD.	0.79 MILES	8,342
WINDHAM COUNTY	DOVER	TH-3	SOUTH ACCESS RD.	0.23 MILES	2,429
WINDHAM COUNTY	DOVER	TH-3	TANNERY RD.	0.52 MILES	5,491
WINDHAM COUNTY	DOVER	TH-4	DORR FITCH RD.	1.38 MILES	14,573
WINDHAM COUNTY	DOVER	TH-5	NORTH ACCESS RD.	0.07 MILES	739
WINDHAM COUNTY	DOVER	TH-5	UPPER HANDLE RD.	0.34 MILES	3,590
WINDHAM COUNTY	DOVER	TH-5	HANDLE RD.	0.52 MILES	5,491
WINDHAM COUNTY	DUMMERSTON	TH-1	EAST-WEST RD.	4.43 MILES	46,781
WINDHAM COUNTY	DUMMERSTON	TH-1	BRIDGE	0.06 MILES	634 ONE LANE
WINDHAM COUNTY	DUMMERSTON	TH-2	BUNKER RD.	0.37 MILES	3,907
WINDHAM COUNTY	DUMMERSTON	TH-2	MIDDLE RD.	3.20 MILES	33,792
WINDHAM COUNTY	DUMMERSTON	TH-3	SCHOOL HOUSE RD.	0.88 MILES	9,293
WINDHAM COUNTY	DUMMERSTON	TH-4	UPPER DUMMERSTON RD.	0.80 MILES	8,448
WINDHAM COUNTY	DUMMERSTON	TH-5	WILLIAMSVILLE RD.	0.06 MILES	634
WINDHAM COUNTY	DUMMERSTON	TH-6	HOUGHTON BROOK RD.	0.39 MILES	4,118
WINDHAM COUNTY	DUMMERSTON	TH-6	JOHNSONS CURVE RD.	0.27 MILES	2,851
SHEET TOTALS				42.05 MILES	444,047 LINEAR FEET

PROJECT NAME: STATEWIDE SOUTH	PLOT DATE: 10-MAR-2014
PROJECT NUMBER: HES MARK(403)	DRAWN BY: K. SWEET
FILE NAME: t13e680.dgn	CHECKED BY: P. PELOQUIN
PROJECT LEADER: P. COBURN	SHEET 15 OF 29
DESIGNED BY: K. SWEET	
CLASS 2 TOWN HIGHWAY 13	

SUMMARY BY COUNTY OF CLASS 2 TOWN HIGHWAYS

COUNTY	TOWN	TH NUMBER	TH NAME	TH MILEAGE	4" DOUBLE YELLOW (LINEAR FEET)
WINDHAM COUNTY	GRAFTON	TH-1	MAIN ST.	0.21 MILES	2,218
WINDHAM COUNTY	GRAFTON	TH-1	ROUTE 121 EAST	4.07 MILES	42,979
WINDHAM COUNTY	GRAFTON	TH-1	HOUGHTONVILLE RD.	1.92 MILES	20,275
WINDHAM COUNTY	GRAFTON	TH-2	TOWNSHEND RD.	3.73 MILES	39,389
WINDHAM COUNTY	GRAFTON	TH-3	CHESTER RD.	4.54 MILES	47,942
WINDHAM COUNTY	GRAFTON	TH-4	ATHENS RD.	0.26 MILES	2,746
WINDHAM COUNTY	GUILFORD	TH-1	GUILFORD CENTER RD.	4.72 MILES	49,843
WINDHAM COUNTY	GUILFORD	TH-2	HINESBURG RD.	2.37 MILES	25,027
WINDHAM COUNTY	GUILFORD	TH-3	TYLER HILL RD.	0.21 MILES	2,218
WINDHAM COUNTY	GUILFORD	TH-4	WEATHERHEAD HOLLOW RD.	4.74 MILES	50,054
WINDHAM COUNTY	HALIFAX	TH-1	BROOK RD.	2.51 MILES	26,506
WINDHAM COUNTY	HALIFAX	TH-1	GREEN RIVER RD.	0.17 MILES	1,795
WINDHAM COUNTY	HALIFAX	TH-1	BRANCH RD.	2.22 MILES	23,443
WINDHAM COUNTY	HALIFAX	TH-2	JACKSONVILLE STAGE RD.	0.55 MILES	5,808
WINDHAM COUNTY	JAMAICA	TH-1	PIKES FALLS RD.	4.34 MILES	45,830
WINDHAM COUNTY	JAMAICA	TH-2	WINDHAM HILL RD.	0.44 MILES	4,646
WINDHAM COUNTY	LONDONDERRY	TH-1	LANDGROVE RD.	2.55 MILES	26,928
WINDHAM COUNTY	LONDONDERRY	TH-2	MAIN ST.	0.67 MILES	7,075
WINDHAM COUNTY	LONDONDERRY	TH-2	THOMPSONBURG RD.	2.53 MILES	26,717
WINDHAM COUNTY	LONDONDERRY	TH-3	ROUTE 121	0.34 MILES	3,590
WINDHAM COUNTY	LONDONDERRY	TH-4	MAGIC MOUNTAIN ACCESS RD.	0.47 MILES	4,963
WINDHAM COUNTY	LONDONDERRY	TH-5	MIDDLETOWN RD.	2.59 MILES	27,350
WINDHAM COUNTY	LONDONDERRY	TH-6	WINHALL HOLLOW RD.	3.02 MILES	31,891
WINDHAM COUNTY	MARLBORO	TH-1	AUGER HOLE RD.	1.68 MILES	17,741
WINDHAM COUNTY	MARLBORO	TH-2	HIGLEY HILL RD.	1.48 MILES	15,629
WINDHAM COUNTY	MARLBORO	TH-3	SOUTH RD.	2.71 MILES	28,618
WINDHAM COUNTY	NEWFANE	TH-1	COURT ST.	0.07 MILES	739
WINDHAM COUNTY	NEWFANE	TH-1	SOUTH WARDSBORO RD.	2.05 MILES	21,648
WINDHAM COUNTY	NEWFANE	TH-1	WEST ST.	0.25 MILES	2,640
WINDHAM COUNTY	NEWFANE	TH-2	DEPOT RD.	1.91 MILES	20,170
WINDHAM COUNTY	NEWFANE	TH-2	DOVER RD.	5.55 MILES	58,608
WINDHAM COUNTY	NEWFANE	TH-3	AUGER HOLE RD.	0.98 MILES	10,348
WINDHAM COUNTY	NEWFANE	TH-4	RADWAY HILL RD.	0.53 MILES	5,597
WINDHAM COUNTY	NEWFANE	TH-5	GRIMES HILL RD.	1.66 MILES	17,530
	GUILFORD	TH-16	SCHOOL RD		3,356 ADDED TO LIST
SHEET TOTALS				68.04 MILES	718,501 LINEAR FEET

PROJECT NAME:	STATEWIDE SOUTH
PROJECT NUMBER:	HES MARK(403)
FILE NAME:	t13e680.dgn
PROJECT LEADER:	P. COBURN
DESIGNED BY:	K. SWEET
CLASS 2 TOWN HIGHWAY QUANTITIES 14	
PLOT DATE:	10-MAR-2014
DRAWN BY:	K. SWEET
CHECKED BY:	P. PELOQUIN
SHEET	16 OF 29

SUMMARY BY COUNTY OF CLASS 2 TOWN HIGHWAYS

COUNTY	TOWN	TH NUMBER	TH NAME	TH MILEAGE	4" DOUBLE YELLOW (LINEAR FEET)
WINDSOR COUNTY	ANDOVER	TH-1	WESTON-ANDOVER RD.	4.83 MILES	51,005
WINDSOR COUNTY	ANDOVER	TH-2	EAST HILL RD.	2.04 MILES	21,542
WINDSOR COUNTY	BARNARD	TH-1	STAGE RD.	1.20 MILES	12,672
WINDSOR COUNTY	BARNARD	TH-2	ROYALTON TURNPIKE	0.19 MILES	2,006
WINDSOR COUNTY	BARNARD	TH-3	NORTH RD.	3.95 MILES	41,712 PAINTED FOR RTE. 12 DETOUR
WINDSOR COUNTY	BETHEL	TH-2	CAMP BROOK RD.	6.16 MILES	65,050
WINDSOR COUNTY	BETHEL	TH-3	FACTORY HILL RD.	0.12 MILES	1,267
WINDSOR COUNTY	BETHEL	TH-3	RANDOLPH CENTER RD.	0.44 MILES	4,646
WINDSOR COUNTY	BETHEL	TH-4	NORTH RD.	0.89 MILES	9,398 PAINTED FOR RTE. 12 DETOUR
WINDSOR COUNTY	BETHEL	TH-5	PEAVINE BLVD.	1.66 MILES	17,530 DO NOT PAINT PER TOWN
WINDSOR COUNTY	BETHEL	TH-6	CHRISTIAN HILL RD.	0.79 MILES	8,342
WINDSOR COUNTY	BRIDGEWATER	TH-1	BRIDGEWATER CENTER RD.	2.44 MILES	25,766
WINDSOR COUNTY	BRIDGEWATER	TH-1	CHATEAUGUAY RD.	0.48 MILES	5,069
WINDSOR COUNTY	BRIDGEWATER	TH-2	NORTH BRIDGEWATER RD.	0.81 MILES	8,554
WINDSOR COUNTY	CAVENDISH	TH-1	DEPOT ST.	0.60 MILES	6,336
WINDSOR COUNTY	CAVENDISH	TH-2	TARBELL HILL RD.	3.12 MILES	32,947
WINDSOR COUNTY	CAVENDISH	TH-3	TWENTY MILE STREAM RD.	3.80 MILES	40,128
WINDSOR COUNTY	CAVENDISH	TH-4	MILL ST	0.22 MILES	2,323
WINDSOR COUNTY	CHESTER	TH-3	GRAFTON RD.	2.61 MILES	27,562
WINDSOR COUNTY	CHESTER	TH-4	DEPOT ST.	0.19 MILES	2,006
WINDSOR COUNTY	CHESTER	TH-5	CHURCH ST.	0.95 MILES	10,032
WINDSOR COUNTY	CHESTER	TH-6	GREEN MTN TURNPIKE	0.19 MILES	2,006
WINDSOR COUNTY	CHESTER	TH-6	PECK RD.	0.26 MILES	2,746
WINDSOR COUNTY	CHESTER	TH-7	ANDOVER RD.	1.48 MILES	15,629
WINDSOR COUNTY	CHESTER	TH-9	FLAMSTEAD RD.	2.68 MILES	28,301
WINDSOR COUNTY	HARTFORD	TH-2	BRIDGE ST.	0.20 MILES	2,112 PAINTED BY TOWN
WINDSOR COUNTY	HARTFORD	TH-2	NORTH MAIN ST.	0.25 MILES	2,640 PAINTED BY TOWN
WINDSOR COUNTY	HARTFORD	TH-3	QUECHEE MAIN ST.	5.30 MILES	55,968
WINDSOR COUNTY	HARTFORD	TH-4	DEWEYS MILLS RD.	0.87 MILES	9,187 PAINTED BY TOWN
WINDSOR COUNTY	HARTFORD	TH-4	QUECHEE-WEST HARTFORD RD.	5.22 MILES	55,123
WINDSOR COUNTY	HARTFORD	TH-5	POMFRET RD.	0.83 MILES	8,765
WINDSOR COUNTY	HARTFORD	TH-6	VA CUTOFF RD.	1.36 MILES	14,362
WINDSOR COUNTY	HARTFORD	TH-7	MILL RD.	0.57 MILES	6,019
WINDSOR COUNTY	HARTFORD	TH-8	WATERMAN HILL RD.	0.19 MILES	2,006 PAINTED BY TOWN
WINDSOR COUNTY	HARTFORD	TH-8	QUECHEE-HARTLAND RD.	1.60 MILES	16,896
WINDSOR COUNTY	HARTFORD	TH-9	CHRISTIAN ST.	2.27 MILES	23,971
WINDSOR COUNTY	HARTFORD	TH-10	SYKES MOUNTAIN AVE	0.97 MILES	10,243 PAINTED BY TOWN
SHEET TOTALS				61.73 MILES	651,858 LINEAR FEET

PROJECT NAME: STATEWIDE SOUTH
PROJECT NUMBER: HES MARK(403)

FILE NAME: t13e680.dgn
PROJECT LEADER: P.COBBURN
DESIGNED BY: K. SWEET
CLASS 2 TOWN HIGHWAY QUANTITIES 17

PLOT DATE: 10-MAR-2014
DRAWN BY: K. SWEET
CHECKED BY: P. PELOQUIN
SHEET 19 OF 29

SUMMARY BY COUNTY OF CLASS 2 TOWN HIGHWAYS

COUNTY	TOWN	TH NUMBER	TH NAME	TH MILEAGE	4" DOUBLE YELLOW (LINEAR FEET)
WINDSOR COUNTY	HARTLAND	TH-1	BROWNSVILLE RD.	2.52 MILES	26,611
WINDSOR COUNTY	HARTLAND	TH-2	QUECHEE RD.	5.26 MILES	55,546
WINDSOR COUNTY	HARTLAND	TH-3	COUNTY RD.	1.12 MILES	11,827
WINDSOR COUNTY	HARTLAND	TH-4	CLAY HILL RD.	2.85 MILES	30,096
WINDSOR COUNTY	LUDLOW	TH-2	MOUNTAIN RD.	0.41 MILES	4,330
WINDSOR COUNTY	LUDLOW	TH-3	DUG RD.	0.22 MILES	2,323
WINDSOR COUNTY	LUDLOW	TH-3	MOUNTAIN RD.	0.13 MILES	1,373
WINDSOR COUNTY	LUDLOW	TH-4	DUG RD.	0.22 MILES	2,323
WINDSOR COUNTY	LUDLOW	TH-4	MAIN ST.	0.08 MILES	845
WINDSOR COUNTY	LUDLOW	TH-4	HIGH ST.	0.53 MILES	5,597
WINDSOR COUNTY	NORWICH	TH-1	MAIN ST.	0.68 MILES	7,181
WINDSOR COUNTY	NORWICH	TH-1	UNION VILLAGE RD.	5.01 MILES	52,906
WINDSOR COUNTY	NORWICH	TH-2	BEAVER MEADOW RD.	5.63 MILES	59,453
WINDSOR COUNTY	NORWICH	TH-3	ROUTE 132	2.83 MILES	29,885
WINDSOR COUNTY	NORWICH	TH-4	ACADEMY RD.	0.40 MILES	4,224
WINDSOR COUNTY	PLYMOUTH	TH-1	COOLIDGE MEMORIAL RD.	0.41 MILES	4,330
WINDSOR COUNTY	PLYMOUTH	TH-2	KINGDOM RD.	2.70 MILES	28,512
WINDSOR COUNTY	POMFRET	TH-1	POMFRET RD.	10.15 MILES	107,184
WINDSOR COUNTY	POMFRET	TH-2	STAGE RD.	2.73 MILES	28,829
WINDSOR COUNTY	POMFRET	TH-3	HOWE HILL RD.	1.77 MILES	18,691
WINDSOR COUNTY	READING	TH-1	TYSON RD.	7.25 MILES	76,560
WINDSOR COUNTY	ROCHESTER	TH-1	BETHEL MOUNTAIN RD.	4.10 MILES	43,296
WINDSOR COUNTY	ROCHESTER	TH-2	MIDDLE HOLLOW RD.	1.47 MILES	15,523
WINDSOR COUNTY	ROCHESTER	TH-3	QUARRY HILL RD.	1.79 MILES	18,902
WINDSOR COUNTY	ROYALTON	TH-1	CHELSEA ST.	0.22 MILES	2,323
WINDSOR COUNTY	ROYALTON	TH-1	SOUTH WINDSOR ST.	2.37 MILES	25,027 DO NOT PAINT PER TOWN
WINDSOR COUNTY	ROYALTON	TH-2	BROAD BROOK RD.	0.55 MILES	5,808 ROAD CLOSED BRIDGE OUT
WINDSOR COUNTY	ROYALTON	TH-3	DIARY HILL RD.	1.84 MILES	19,430
WINDSOR COUNTY	ROYALTON	TH-4	NORTH RD.	2.22 MILES	23,443 PAINTED FOR RTE I2 DETOUR
WINDSOR COUNTY	ROYALTON	TH-5	NORTH WINDSOR ST.	1.16 MILES	12,250
WINDSOR COUNTY	ROYALTON	TH-5	BRIDGE ST.	0.20 MILES	2,112
WINDSOR COUNTY	ROYALTON	TH-6	ROYALTON HILL RD.	1.16 MILES	12,250
WINDSOR COUNTY	ROYALTON	TH-7	CHRISTIAN HILL RD.	0.04 MILES	422
	LUDLOW	TH-1	ANDOVER RD.		4,340 ROAD IS PAVED
	PLYMOUTH	TH-3	BUSHNELL POND RD		6,900 ROAD IS PAVED
SHEET TOTALS				70.02 MILES	739,451 LINEAR FEET

PROJECT NAME: STATEWIDE SOUTH	
PROJECT NUMBER: HES MARK(403)	
FILE NAME: t13e680.dgn	PLOT DATE: 10-MAR-2014
PROJECT LEADER: P. COBURN	DRAWN BY: K. SWEET
DESIGNED BY: K. SWEET	CHECKED BY: P. PELOQUIN
CLASS 2 TOWN HIGHWAY QUANTITIES 18	SHEET 20 OF 29

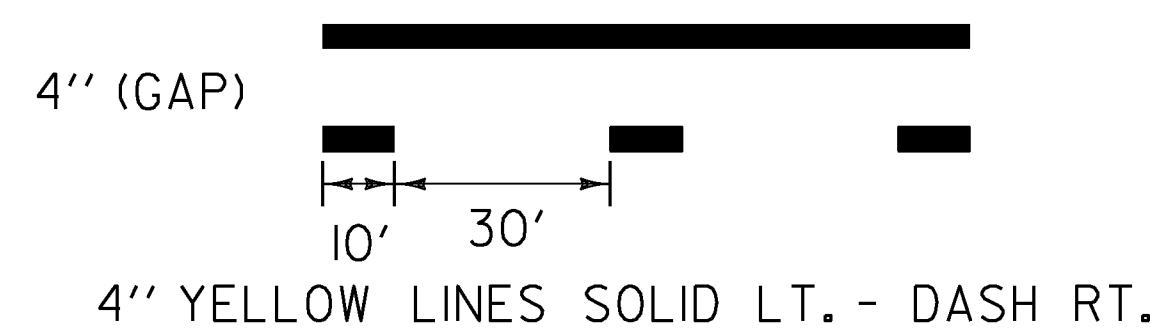
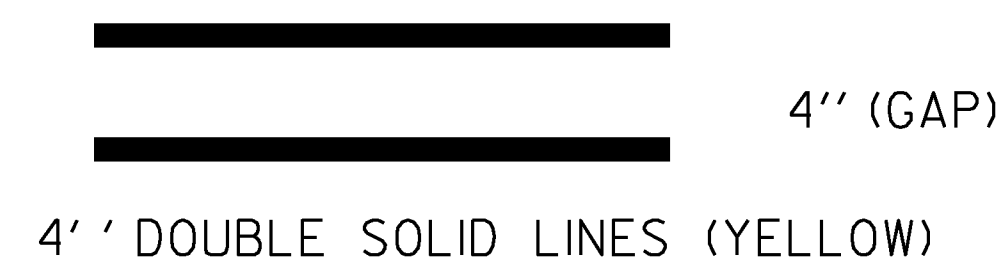
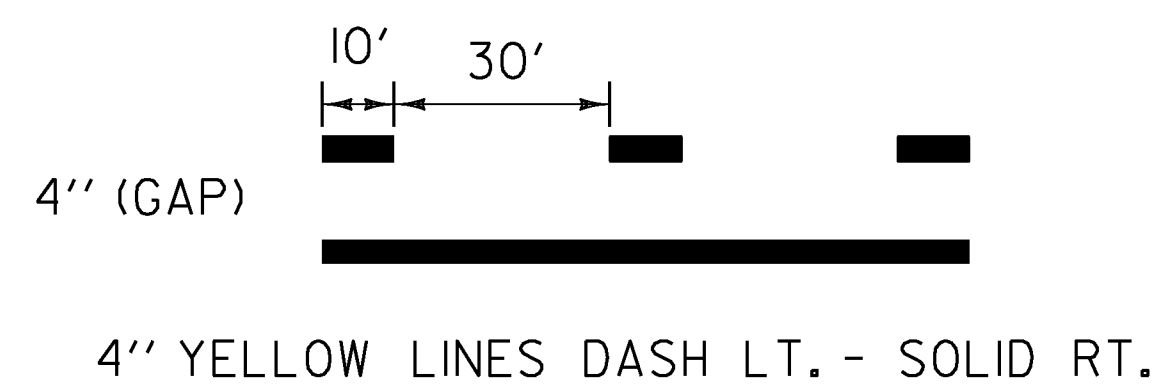
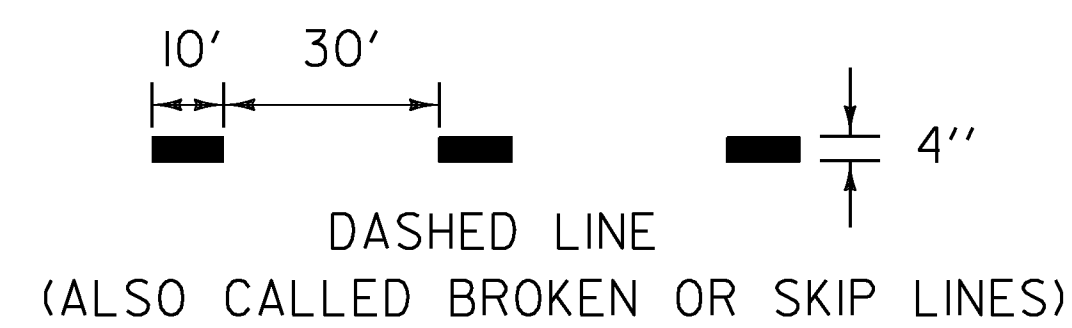
SUMMARY BY COUNTY OF CLASS 2 TOWN HIGHWAYS

COUNTY	TOWN	TH NUMBER	TH NAME	TH MILEAGE	4" DOUBLE YELLOW (LINEAR FEET)
WINDSOR COUNTY	SHARON	TH-1	BEAVER MEADOW RD.	0.53 MILES	5,597
WINDSOR COUNTY	SHARON	TH-2	ROUTE 132	4.02 MILES	42,451
WINDSOR COUNTY	SHARON	TH-3	RIVER RD.	2.43 MILES	25,661
WINDSOR COUNTY	SHARON	TH-4	BROAD BROOK RD.	0.30 MILES	3,168
WINDSOR COUNTY	SHARON	TH-5	HOWE HILL RD.	2.72 MILES	28,723
WINDSOR COUNTY	SPRINGFIELD	TH-3	SUMMER ST.	1.19 MILES	12,566
WINDSOR COUNTY	SPRINGFIELD	TH-3	SKITCHEWAUG TRAIL	4.56 MILES	48,154
WINDSOR COUNTY	SPRINGFIELD	TH-4	BROCKWAY MILLS RD.	2.83 MILES	29,885
WINDSOR COUNTY	SPRINGFIELD	TH-4	SOUTH ST.	2.42 MILES	25,555
WINDSOR COUNTY	SPRINGFIELD	TH-5	BROOK RD.	2.20 MILES	23,232
WINDSOR COUNTY	SPRINGFIELD	TH-5	VALLEY ST.	0.97 MILES	10,243
WINDSOR COUNTY	SPRINGFIELD	TH-6	MAIN ST	1.48 MILES	15,629
WINDSOR COUNTY	SPRINGFIELD	TH-6	MILL RD.	0.12 MILES	1,267
WINDSOR COUNTY	SPRINGFIELD	TH-7	AIRPORT RD.	0.12 MILES	1,267
WINDSOR COUNTY	SPRINGFIELD	TH-8	BALTIMORE RD.	0.81 MILES	8,554
WINDSOR COUNTY	SPRINGFIELD	TH-9	RESERVOIR RD.	1.25 MILES	13,200
WINDSOR COUNTY	SPRINGFIELD	TH-10	ELM ST.	0.33 MILES	3,485
WINDSOR COUNTY	SPRINGFIELD	TH-10	SPOONERVILLE RD.	0.40 MILES	4,224
WINDSOR COUNTY	STOCKBRIDGE	TH-1	BLACKMER BLVD.	2.62 MILES	27,667
WINDSOR COUNTY	STOCKBRIDGE	TH-2	BRIDGE ST.	0.13 MILES	1,373
WINDSOR COUNTY	STOCKBRIDGE	TH-2	RIVER RD.	0.39 MILES	4,118
WINDSOR COUNTY	WEATHERSFIELD	TH-1	WEATHERSFIELD CENTER RD.	5.25 MILES	55,440
WINDSOR COUNTY	WEATHERSFIELD	TH-3	AIRPORT RD.	0.48 MILES	5,069
WINDSOR COUNTY	WEATHERSFIELD	TH-4	RESERVOIR RD.	2.58 MILES	27,245
WINDSOR COUNTY	WEATHERSFIELD	TH-6	STOUGHTON POND RD.	1.32 MILES	13,939
WINDSOR COUNTY	WESTON	TH-1	CHESTER MOUNTAIN RD.	1.37 MILES	14,467
WINDSOR COUNTY	WESTON	TH-2	LANDGROVE RD.	0.35 MILES	3,696
WINDSOR COUNTY	WESTON	TH-2	LAWRENCE HILL RD.	0.26 MILES	2,746
WINDSOR COUNTY	WEST WINDSOR	TH-1	BROWNSVILLE-HARTLAND RD.	4.70 MILES	49,632
WINDSOR COUNTY	WEST WINDSOR	TH-2	SKI TOW RD.	0.82 MILES	8,659
WINDSOR COUNTY	WINDSOR	TH-3	COUNTY RD.	3.65 MILES	38,544
WINDSOR COUNTY	WINDSOR	TH-3	STATE ST.	0.72 MILES	7,603
WINDSOR COUNTY	WINDSOR	TH-4	BRIDGE ST.	0.22 MILES	2,323
WINDSOR COUNTY	WINDSOR	TH-5	ASCUTNEY ST.	0.26 MILES	2,746 CONSTRUCTION - NO WORK
WINDSOR COUNTY	WINDSOR	TH-6	COLE HILL RD.	0.45 MILES	4,752
SHEET TOTALS				54.25 MILES	572,880 LINEAR FEET

PROJECT NAME: STATEWIDE SOUTH
PROJECT NUMBER: HES MARK(403)

FILE NAME: t13e680.dgn
PROJECT LEADER: P. COBURN
DESIGNED BY: K. SWEET
CLASS 2 TOWN HIGHWAY QUANTITIES 19

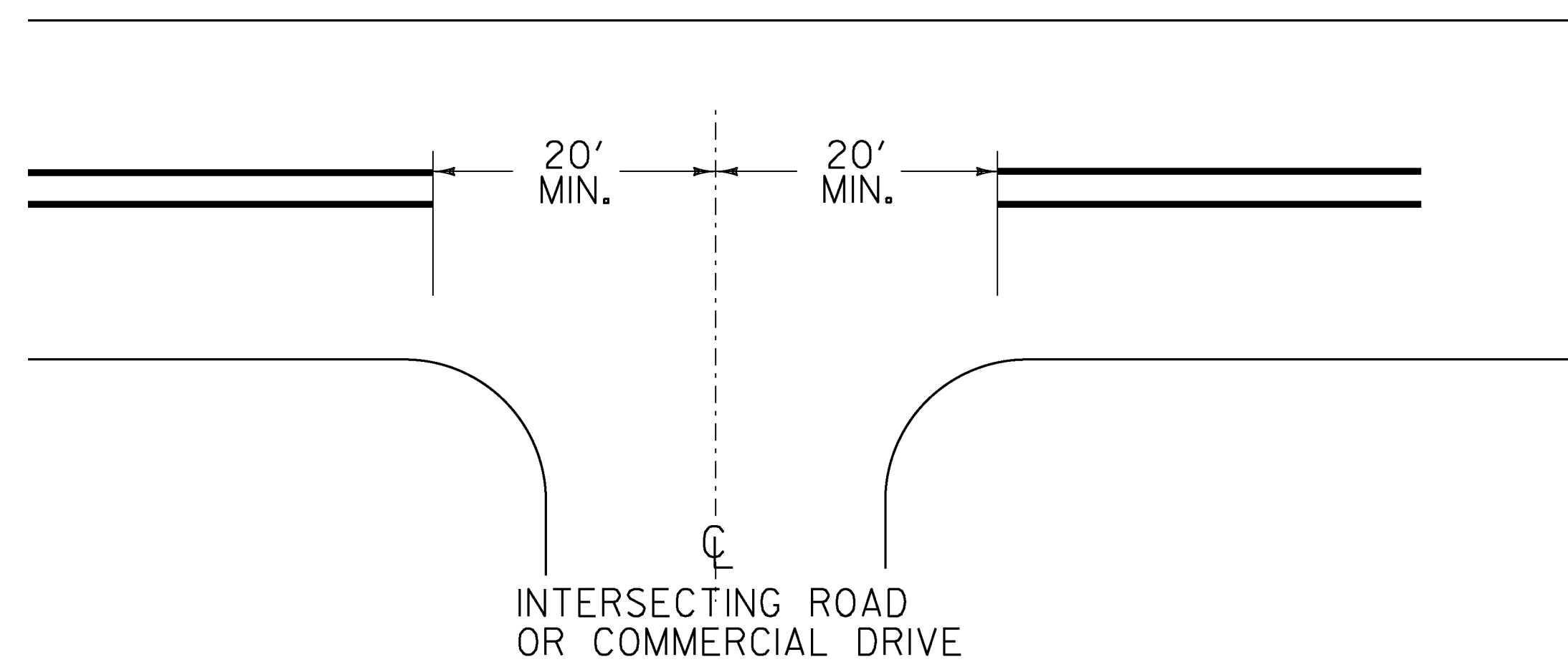
PLOT DATE: 10-MAR-2014
DRAWN BY: K. SWEET
CHECKED BY: P. PELOQUIN
SHEET 21 OF 29



PAVEMENT MARKING LINE DETAILS

NOTE:

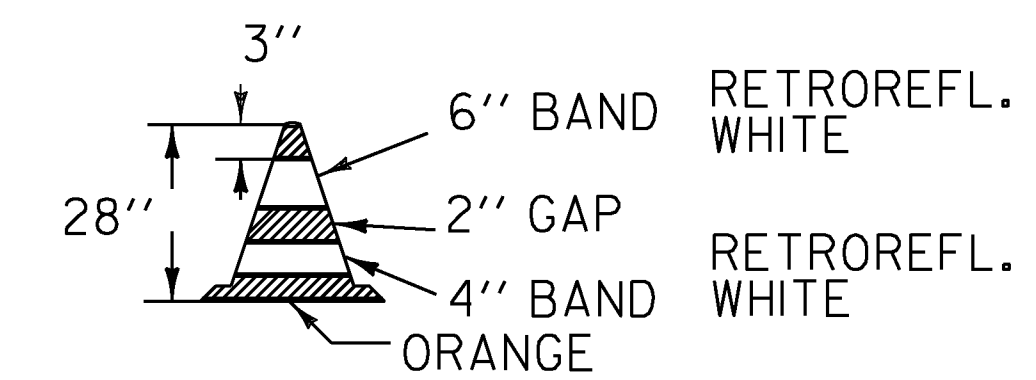
1. PAINT CENTERLINE MARKINGS TO MATCH EXISTING. THERE ARE VERY FEW LOCATIONS WHERE PASSING IS ALLOWED. THE CONTRACTOR SHALL NOTE THESE LOCATIONS AND REPORT THEM TO THE RESIDENT ENGINEER SO THAT SO THAT A DATA BASE CAN BE DEVELOPED.



CENTERLINE LAYOUT

CENTERLINE BREAKS:

1. AT ALL STATE HIGHWAYS, TOWN HIGHWAYS THAT HAVE STOP OR YIELD SIGNS INSTALLED.
2. COMMERCIAL DRIVES:
 - A. WHERE A SEPARATE TURN LANE EXISTS ON THE MAIN LINE (LT. OR RT.)
 - B. WHERE SIGNIFICANT TRAFFIC VOLUMES EXIST.



28" RETROREFLECTORIZED CONE

NOTES:

1. 28" RETROREFLECTORIZED CONES SHALL BE USED ON ALL ROADWAYS.
2. CONES MAY BE WEIGHTED TO PREVENT OVERTURNING, HOWEVER THE WEIGHTS SHALL NOT PRESENT A HAZARD IF THE CONE IS STRUCK.
3. RETROREFLECTIVE SHEETING SHALL BE AT A MINIMUM ASTM D4956 TYPE III.

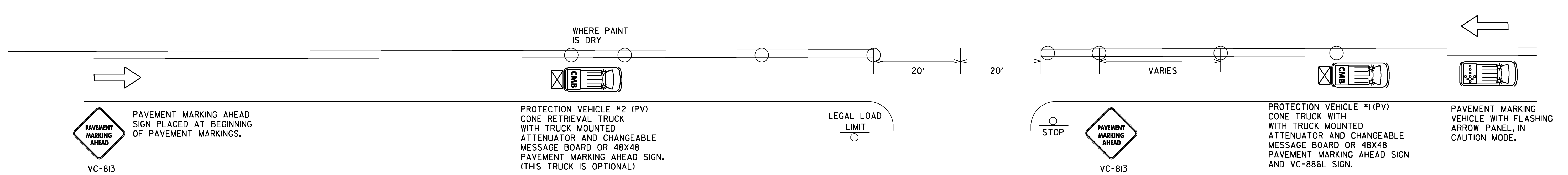
GENERAL NOTE:

THE CONTRACTOR SHALL WORK WITH VTRANS TO SCHEDULE MARKING ON CLASS 2 TOWN HIGHWAY QUANTITIES THAT ARE SCHEDULED FOR REPAIR OR RETREATMENT.
THE CONTRACTOR WILL BE RESPONSIBLE FOR INSTALLING CENTERLINE MARKINGS WITHIN 2 WEEKS OF NOTIFICATION.

NOT TO SCALE

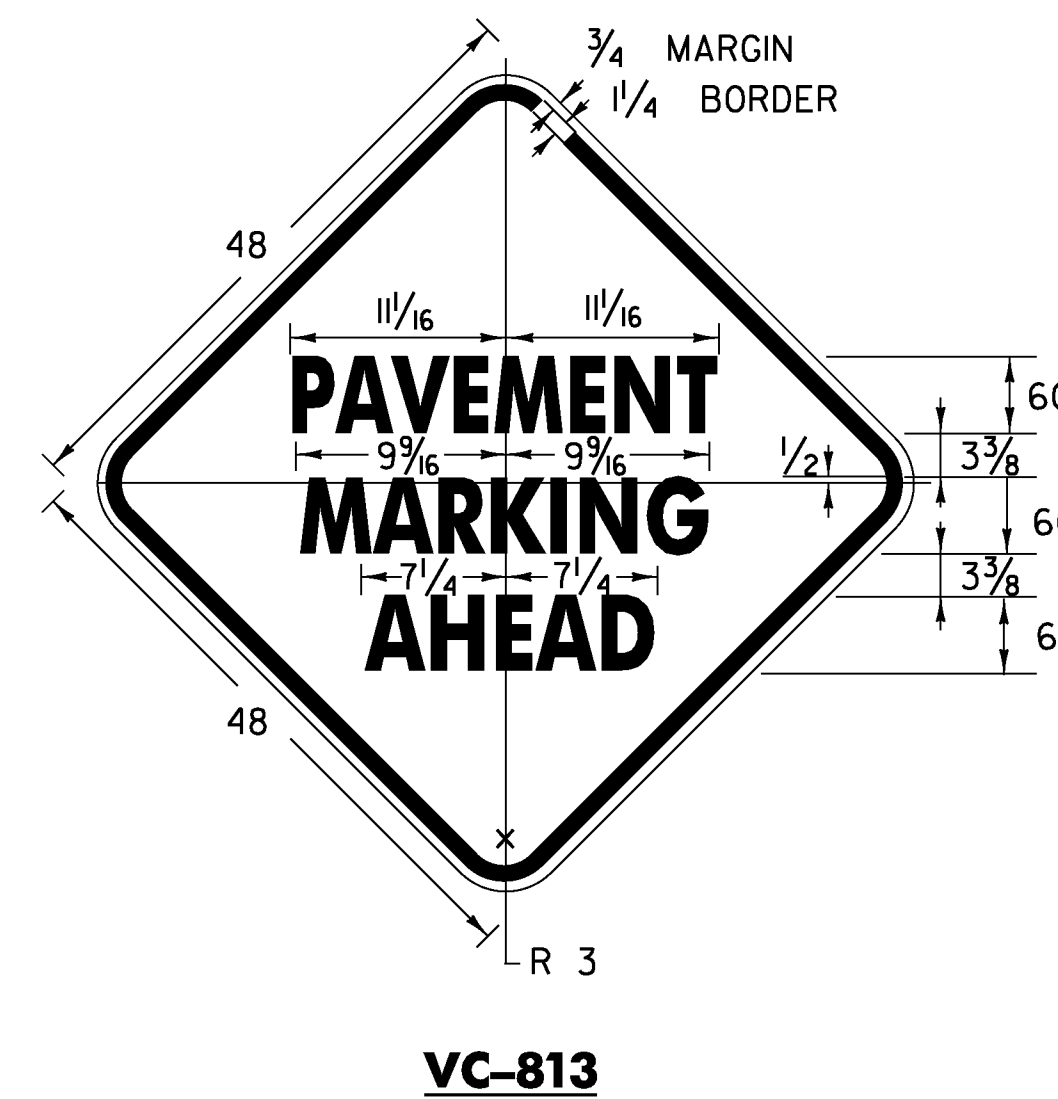
PROJECT NAME: STATEWIDE SOUTH	
PROJECT NUMBER: HES MARK(403)	
FILE NAME: t13e680.dgn	PLOT DATE: 10-MAR-2014
PROJECT LEADER: P. COBURN	DRAWN BY: K. SWEET
DESIGNED BY: K. SWEET	CHECKED BY: P. PELOQUIN
MISCELLANEOUS DETAILS	SHEET 23 OF 29

TRAFFIC CONTROL PLAN



NOTES

- I. ALL WORK VEHICLES USED SHALL DISPLAY HIGH-INTENSITY ROTATING, FLASHING, OSCILLATING OR STROBE LIGHTS.
2. ALL PROTECTION VEHICLES SHALL BE EQUIPPED WITH A TRUCK MOUNTED ATTENUATOR WITH A VC-866L SIGN ATTACHED AND A CHANGEABLE MESSAGE BOARD OR 48X48 PAVEMENT MARKING AHEAD SIGN. PAYMENT WILL BE MADE UNDER ITEM 608.50 (TRUCK MOUNTED ATTENUATOR AWV/PV).
3. FLASHING ARROW PANELS MOUNTED TO VEHICLES WILL NOT BE PAID FOR DIRECTLY, BUT WILL BE CONSIDERED INCIDENTAL TO ITEM 641.10 (TRAFFIC CONTROL). FLASHING ARROW PANELS SHALL BE USED IN CAUTION MODE WHEN VEHICLE IS IN TRAVEL LANE.
4. PROTECTION VEHICLE #1 SHALL TRAVEL AT A VARYING DISTANCE FROM PAVEMENT MARKING VEHICLE WHILE DROPPING CONES ON THE WET PAINT TO ENSURE ADEQUATE SIGHT DISTANCE FOR TRAFFIC APPROACHING FROM THE REAR.
5. UNIFORMED TRAFFIC OFFICER (UTO) REQUIRED FOR NIGHT WORK, AND AT OTHER TIMES AS DIRECTED BY THE ENGINEER.
6. THE NUMBER OF CHANNELIZING DEVICES AND OTHER TRAFFIC CONTROL DEVICES SHOWN ON THIS SHEET ARE FOR ILLUSTRATIVE PURPOSES ONLY. THE ACTUAL NUMBER REQUIRED IS TO BE DETERMINED BASED ON FIELD CONDITIONS.
7. CONE VEHICLES SHALL HAVE PROTECTIVE CAGES TO PROTECT THE PERSON PLACING AND RETRIEVING CONES.
8. PAVEMENT MARKING AHEAD SIGNS SHALL BE PLACED AT THE BEGINNING OF PAVEMENT MARKING OPERATION AND AT A MINIMUM OF EVERY 3 MILES. THEY SHOULD ALSO BE PLACED AFTER EVERY NUMBERED STATE HIGHWAY OR MAJOR INTERSECTION INCLUDING COMMERCIAL DRIVES.
9. WORK VEHICLES SHALL PULL OVER TO ALLOW VEHICLES TO PASS AT REASONABLE INTERVALS TO AVOID EXCESSIVE QUEUING AND DELAYS.
10. CONE PICK-UP MAY BE ACCOMPLISHED USING DEDICATED VEHICLE (PV#2) OR BY PROTECTION VEHICLE #1 WHEN PAINT TRUCK IS NOT OPERATING AND PAINT IS DRY.
- II. CONES SHALL BE LEFT IN PLACE UNTIL PAINT IS DRY AND NOT TRACKING.



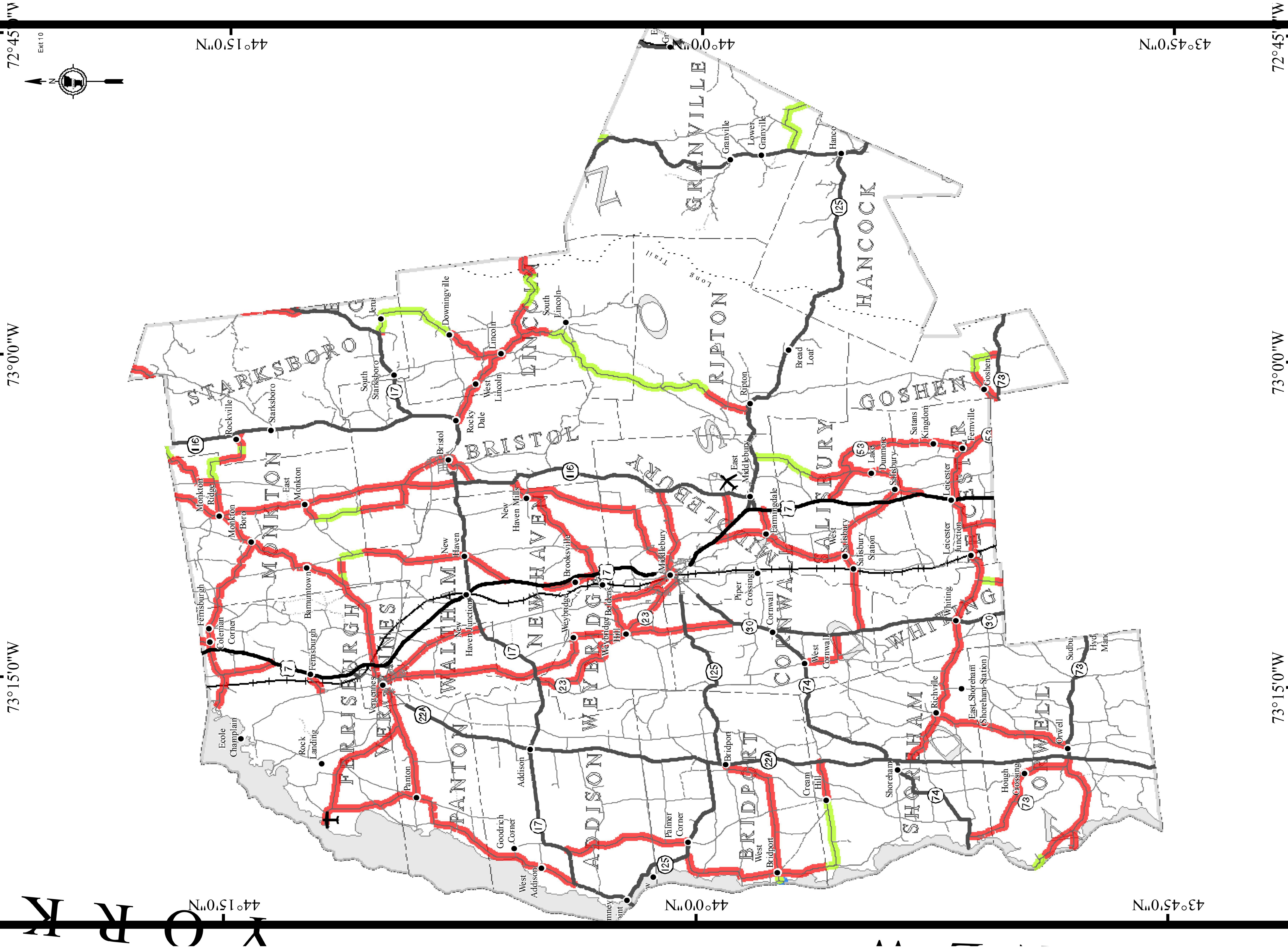
LEGEND

- INDICATES TRAFFIC FLOW
- FLASHING ARROW PANEL
- TRUCK MOUNTED ATTENUATOR
- CHANGEABLE MESSAGE BOARD
- 28" RETROREFLECTORIZED CONES
- MARKING OPERATIONS VEHICLE

NOT TO SCALE

PROJECT NAME: STATEWIDE SOUTH
PROJECT NUMBER: HES MARK(403)

FILE NAME: t13e680.dgn	PLOT DATE: 10-MAR-2014
PROJECT LEADER: P. COBURN	DRAWN BY: K. SWEET
DESIGNED BY: K. SWEET	CHECKED BY: P. PELOQUIN
TRAFFIC CONTROL PLAN	SHEET 24 OF 29



CLASS 2 TOWN HIGHWAYS BY SURFACE TYPE

1:209,000 VTRANS - MAPPING UNIT - FEBRUARY 14, 2013

0 2.5 5 10 15
Miles

Class 2 Town Highways By Surface

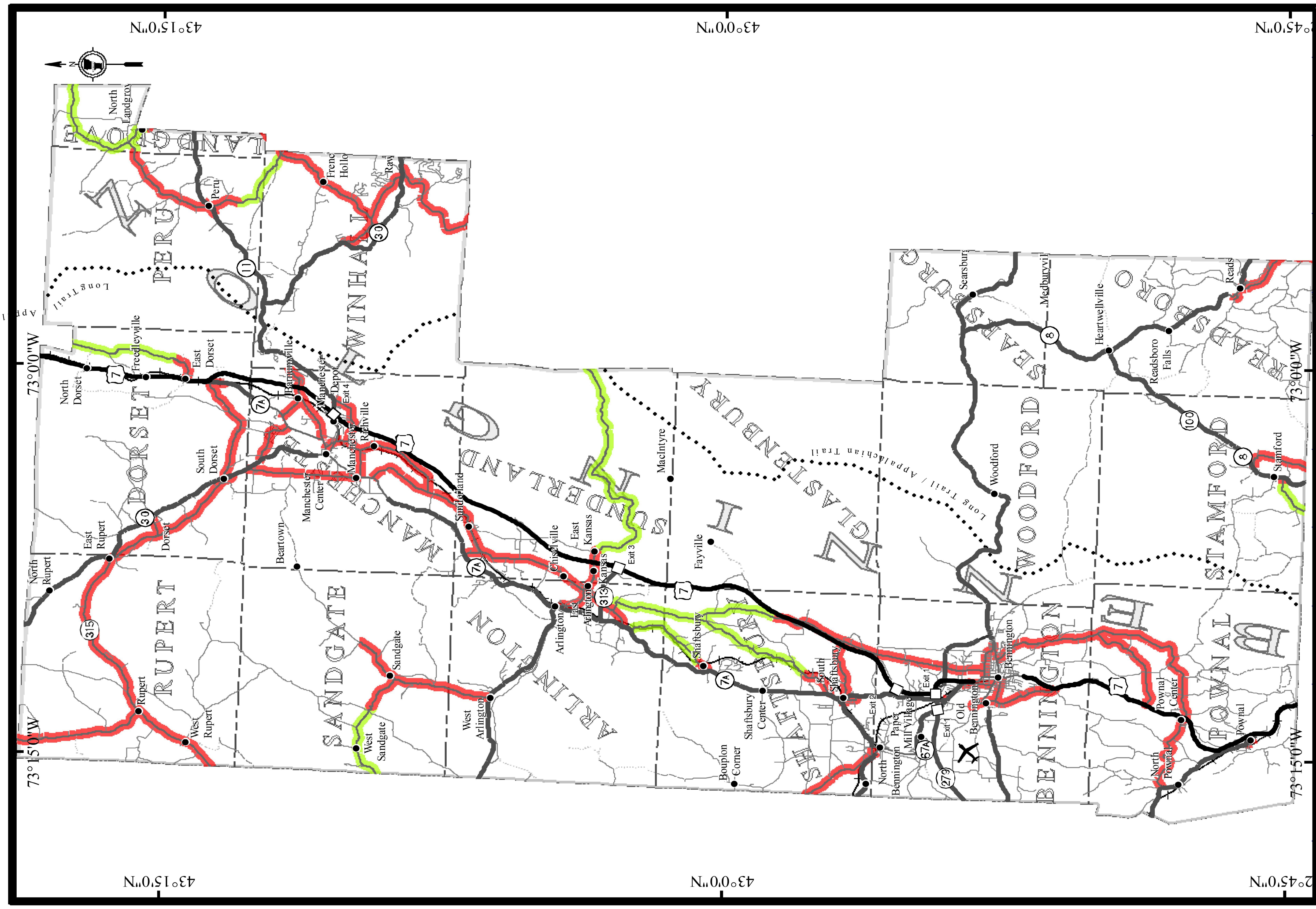
- █ Paved
- █ Gravel
- █ Soil or graded and drained earth

ADDISON COUNTY

PROJECT NAME: STATEWIDE SOUTH	PLOT DATE: 10-MAR-2014
PROJECT NUMBER: HES MARK(403)	DRAWN BY: K. SWEET
FILE NAME: t13e680.dgn	CHECKED BY: P. PELOQUIN
TOWN HIGHWAY COUNTY MAP SHEET I	SHEET 25 OF 29

For more information regarding this map, please contact the VTrans Mapping Unit at (802) 858-3830 or at VT Agency of Transportation - Mapping Unit, 1 National Ute Drive, Montpelier, VT 05603-5001.

BENNINGTON COUNTY



CLASS 2 TOWN HIGHWAYS BY SURFACE TYPE

M A S A C H U S

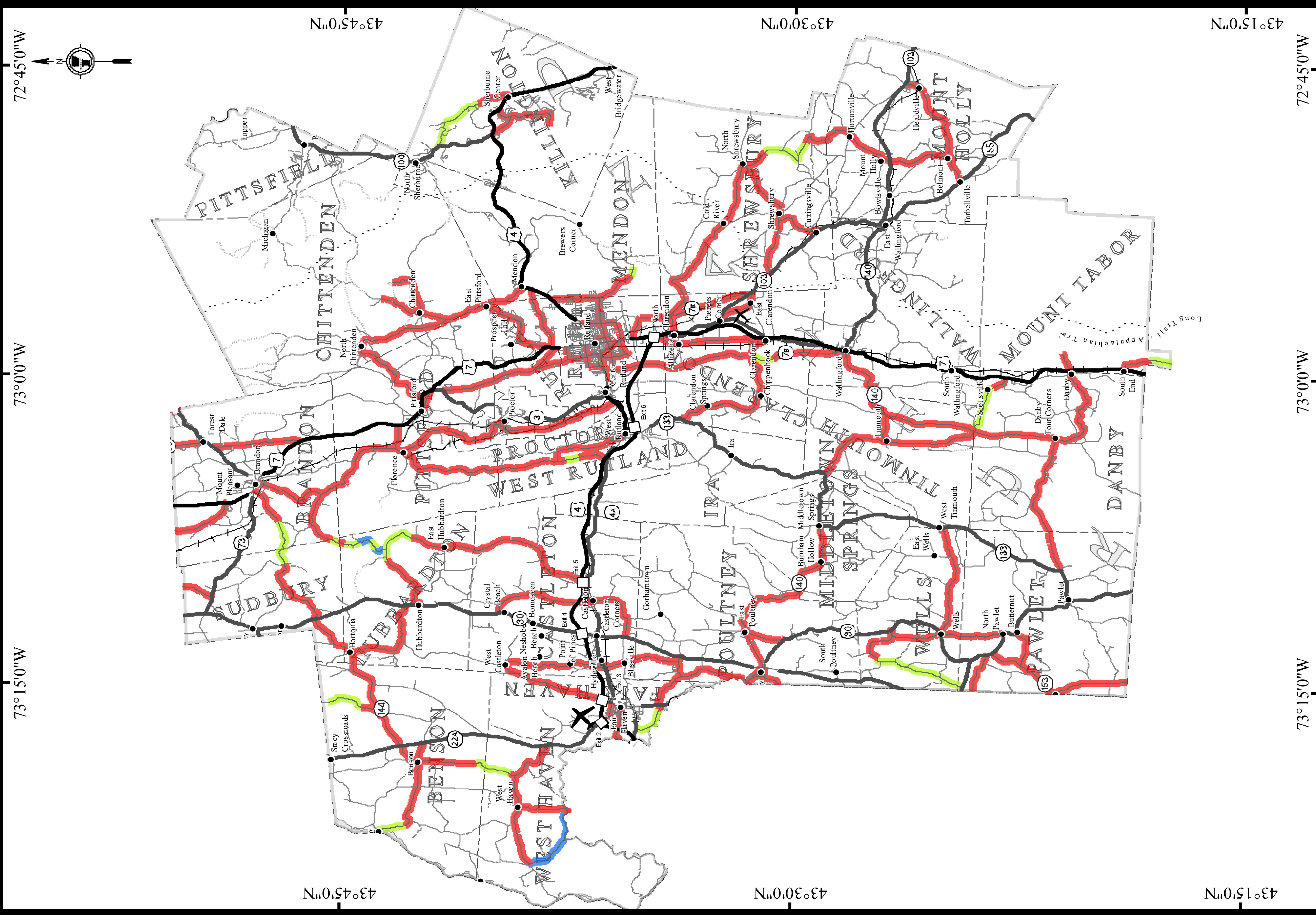
Class 2 Town Highways By Surface Type

- Paved
- Gravel
- Soil or graded and drained earth

1:175,000 VTRANS - MAPPING UNIT - FEBRUARY 14, 2013

PROJECT NAME:	STATEWIDE SOUTH	PLOT DATE:	10-MAR-2014
PROJECT NUMBER:	HES MARK(403)	DRAWN BY:	K. SWEET
FILE NAME:	+13e680.dgn	CHECKED BY:	P. PELOQUIN
DESIGNED BY:	K. SWEET	TOWN HIGHWAY COUNTY MAP SHEET 2	SHEET 26 OF 29

For more information regarding this map, please contact the VTrans Mapping Unit at (802) 687-8500 or at VTrans Mapping Unit, 1 National Lab Drive, Montpelier, VT 05633-8801.



CLASS 2 TOWN HIGHWAYS BY SURFACE TYPE

1:222,000 VTRANS - MAPPING UNIT - FEBRUARY 14, 2013

0 2.5 5 10 15
Miles

Class 2 Town Highways By Surface

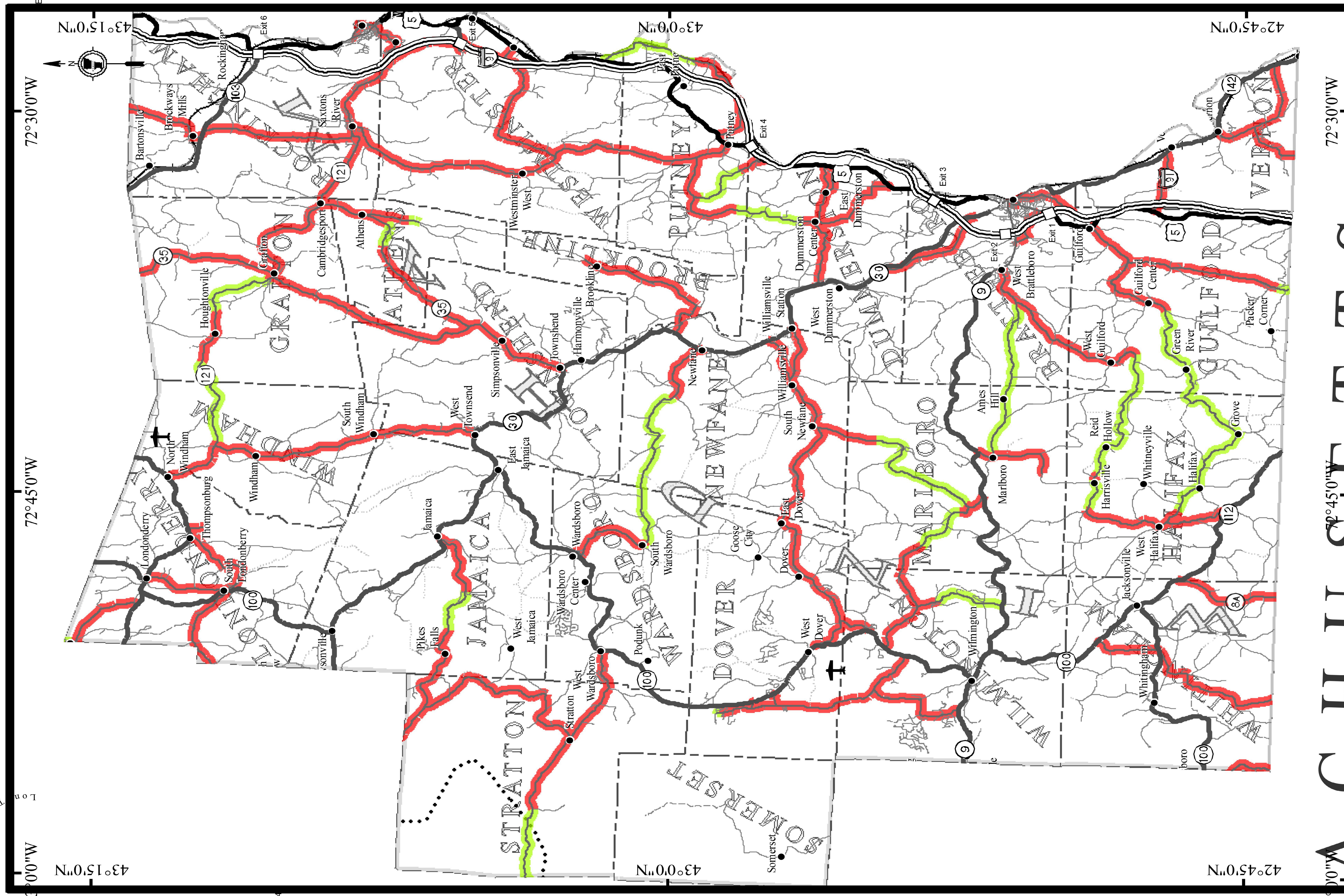
- █ Paved
- █ Gravel
- █ Soil or graded and drained earth

RUTLAND COUNTY

PROJECT NAME: STATEWIDE SOUTH	PLOT DATE: 10-MAR-2014
PROJECT NUMBER: HES MARK(403)	DRAWN BY: K. SWEET
FILE NAME: t13e680.dgn	CHECKED BY: P. PELOQUIN
DESIGNED BY: K. SWEET	SHEET 27 OF 29
TOWN HIGHWAY COUNTY MAP SHEET 3	

For more information regarding this map, please contact the VTrans Mapping Unit at (802) 822-2500 or at VT Agency of Transportation, Mapping Unit, National L&E Drive, Montpelier, VT 05633-5001

WINDHAM COUNTY



CLASS 2 TOWN HIGHWAYS BY SURFACE TYPE

Class 2 Town Highways By Surface

- █ Paved
- █ Gravel
- █ Soil or graded and drained earth

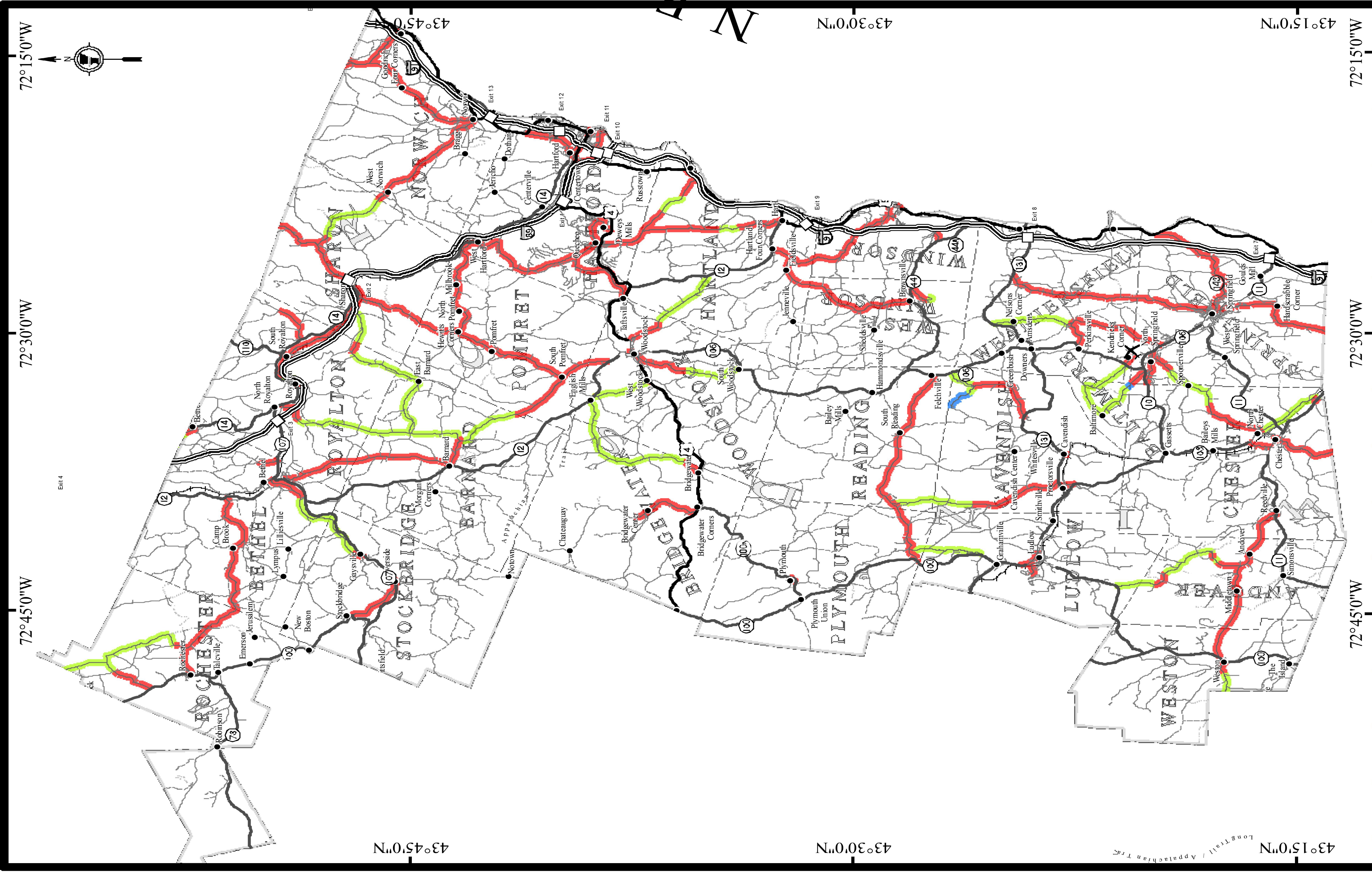
0 2.5 5 Miles

1:176,000 VTRANS - MAPPING UNIT - FEBRUARY 14, 2013

PROJECT NAME:	STATEWIDE SOUTH	PLOT DATE:	10-MAR-2014
PROJECT NUMBER:	HES MARK(403)	DRAWN BY:	K. SWEET
FILE NAME:	+13e680.dgn	CHECKED BY:	P. PELOQUIN
DESIGNED BY:	K. SWEET	SHEET	28 OF 29
TOWN HIGHWAY COUNTY MAP SHEET 4			

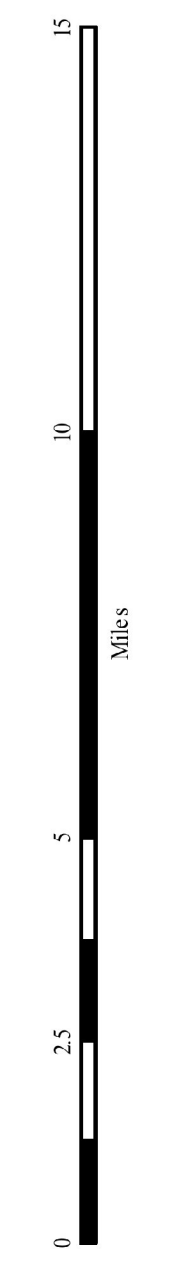
For more information regarding this map, please contact the Vtrans Mapping Unit at (802) 258-2500 or a VT Agency of Transportation. Mapping Unit, National LULU Data, Mapmaker, VT, 05535-5501

WINDSOR COUNTY



CLASS 2 TOWN HIGHWAYS BY SURFACE TYPE

- Class 2 Town Highways By Surface
- █ Paved
 - █ Gravel
 - █ Soil or graded and drained earth



VTRANS - MAPPING UNIT - FEBRUARY 14, 2013

1:234,000

PROJECT NAME:	STATEWIDE SOUTH	PLOT DATE:	10-MAR-2014
PROJECT NUMBER:	HES MARK(403)	DRAWN BY:	K. SWEET
FILE NAME:	+13e680.dgn	CHECKED BY:	P. PELOQUIN
DESIGNED BY:	K. SWEET	SHEET	29 OF 29
TOWN HIGHWAY COUNTY MAP SHEET 5			

For more information regarding this map, please contact the VTrans Mapping Unit (802) 255-2600 or at VTrans Agency of Transportation - Mapping Unit, 1 National Rd., Montpelier, VT 05602-0001.