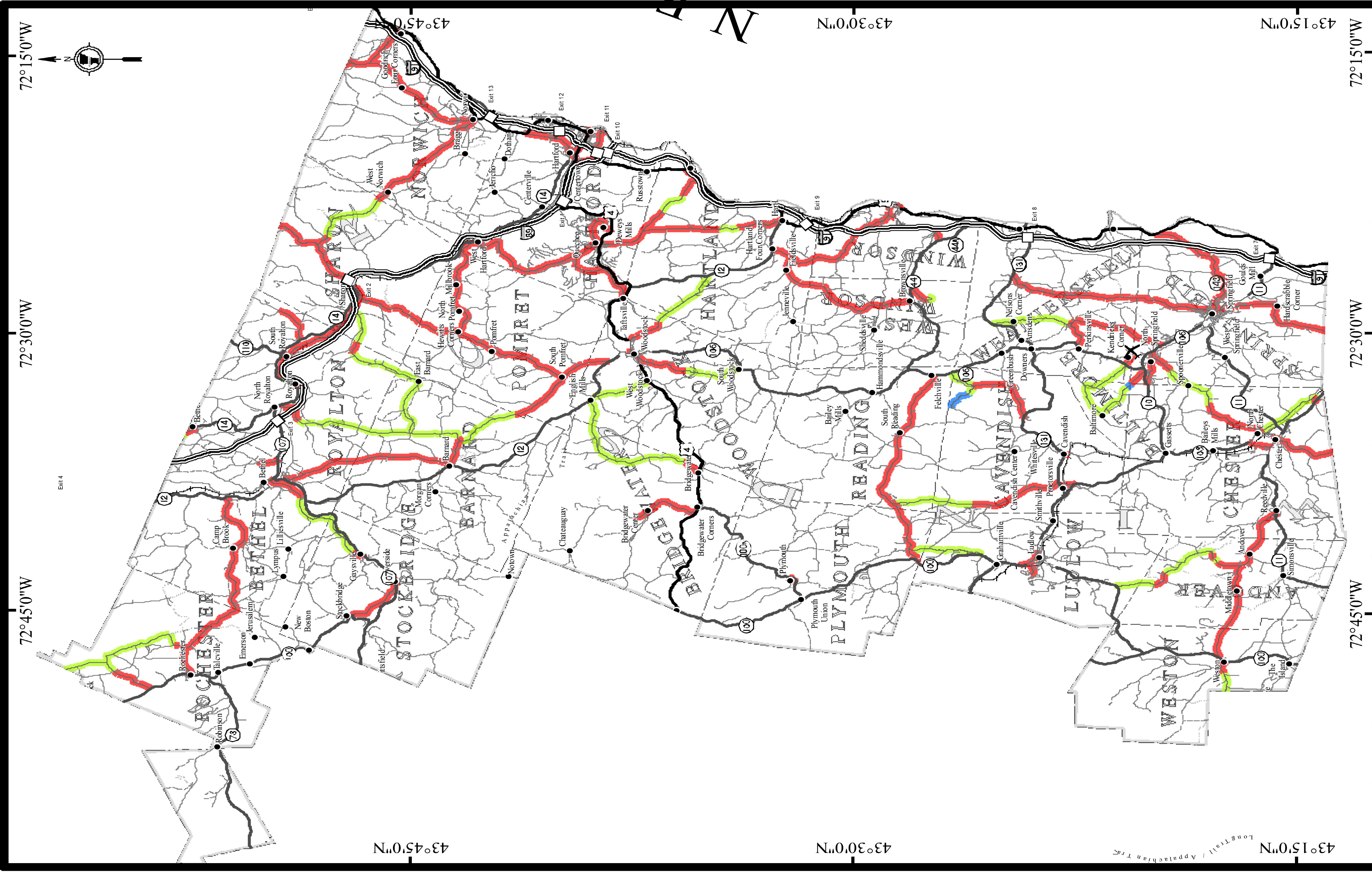


WINDSOR COUNTY



CLASS 2 TOWN HIGHWAYS BY SURFACE TYPE

- Class 2 Town Highways By Surface
- █ Paved
 - █ Gravel
 - █ Soil or graded and drained earth



VTRANS - MAPPING UNIT - FEBRUARY 14, 2013

1:234,000

PROJECT NAME:	STATEWIDE SOUTH	PLOT DATE:	10-MAR-2014
PROJECT NUMBER:	HES MARK(403)	DRAWN BY:	K. SWEET
FILE NAME:	+13e680.dgn	CHECKED BY:	P. PELOQUIN
DESIGNED BY:	K. SWEET	SHEET	29 OF 29
TOWN HIGHWAY COUNTY MAP SHEET 5			

For more information regarding this map, please contact the VTrans Mapping Unit (802) 255-2600 or at VTrans Agency of Transportation - Mapping Unit, 1 National Rd., Montpelier, VT 05603-0001.