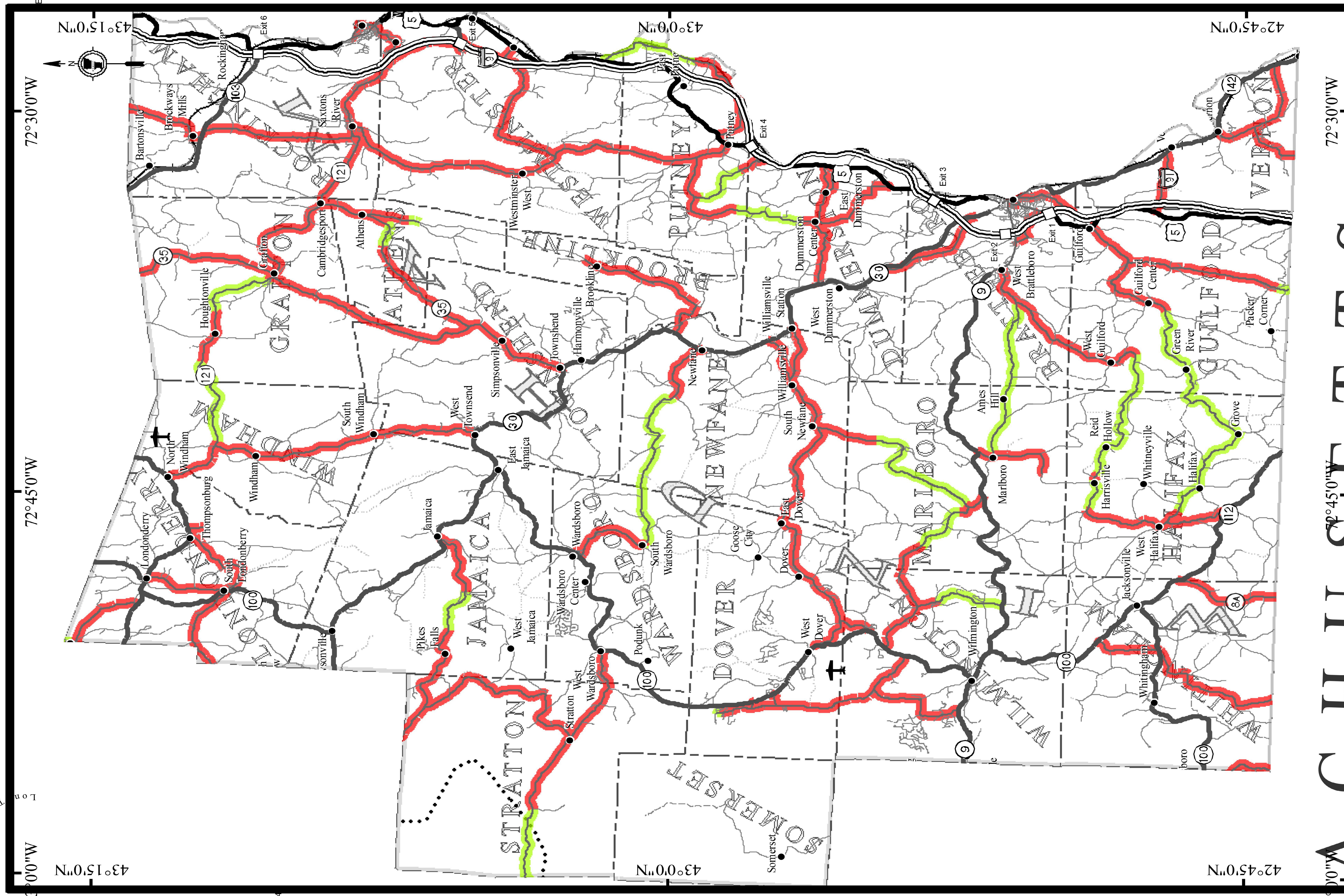
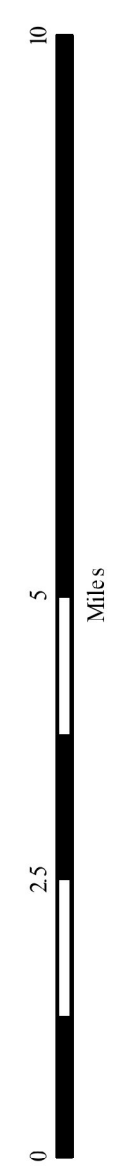


WINDHAM COUNTY



CLASS 2 TOWN HIGHWAYS BY SURFACE TYPE

- Class 2 Town Highways By Surface**
- █ Paved
 - █ Gravel
 - █ Soil or graded and drained earth



1:176,000 VTRANS - MAPPING UNIT - FEBRUARY 14, 2013

PROJECT NAME:	STATEWIDE SOUTH	PLOT DATE:	10-MAR-2014
PROJECT NUMBER:	HES MARK(403)	DRAWN BY:	K. SWEET
FILE NAME:	+13e680.dgn	CHECKED BY:	P. PELOQUIN
DESIGNED BY:	K. SWEET	TOWN HIGHWAY COUNTY MAP SHEET 4	SHEET 28 OF 29

For more information regarding this map, please contact the Vtrans Mapping Unit at (802) 258-2500 or a VT Agency of Transportation. Mapping Unit, National LULU Data, Mapmaker, VT, 05833-5501