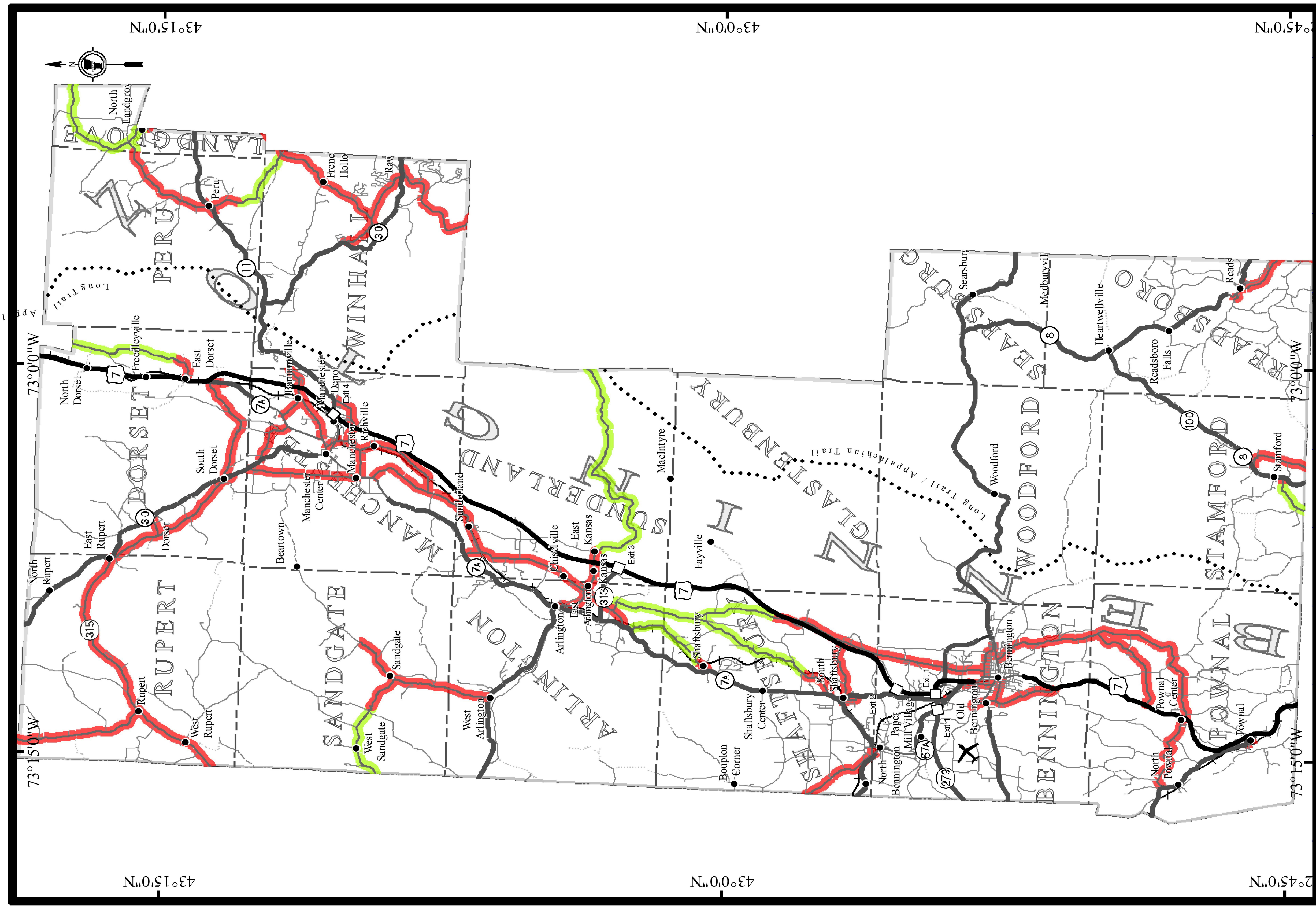


# BENNINGTON COUNTY



**CLASS 2 TOWN HIGHWAYS BY SURFACE TYPE**

**M A S A C H U S**

█ Paved  
█ Gravel  
█ Soil or graded and drained earth

1:175,000 VTRANS - MAPPING UNIT - FEBRUARY 14, 2013

PROJECT NAME:	STATEWIDE SOUTH	PLOT DATE:	10-MAR-2014
PROJECT NUMBER:	HES MARK(403)	DRAWN BY:	K. SWEET
FILE NAME:	+13e680.dgn	CHECKED BY:	P. PELOQUIN
PROJECT LEADER:	P. COBURN	SHEET	26 OF 29
DESIGNED BY:	K. SWEET		
TOWN HIGHWAY COUNTY MAP SHEET 2			

For more information regarding this map, please contact the VTrans Mapping Unit at (802) 682-8500 or at VTransMapping@vt.gov. VTrans Mapping Unit, 1 Thruway Lib. Drive, Montpelier, VT 05602-8801