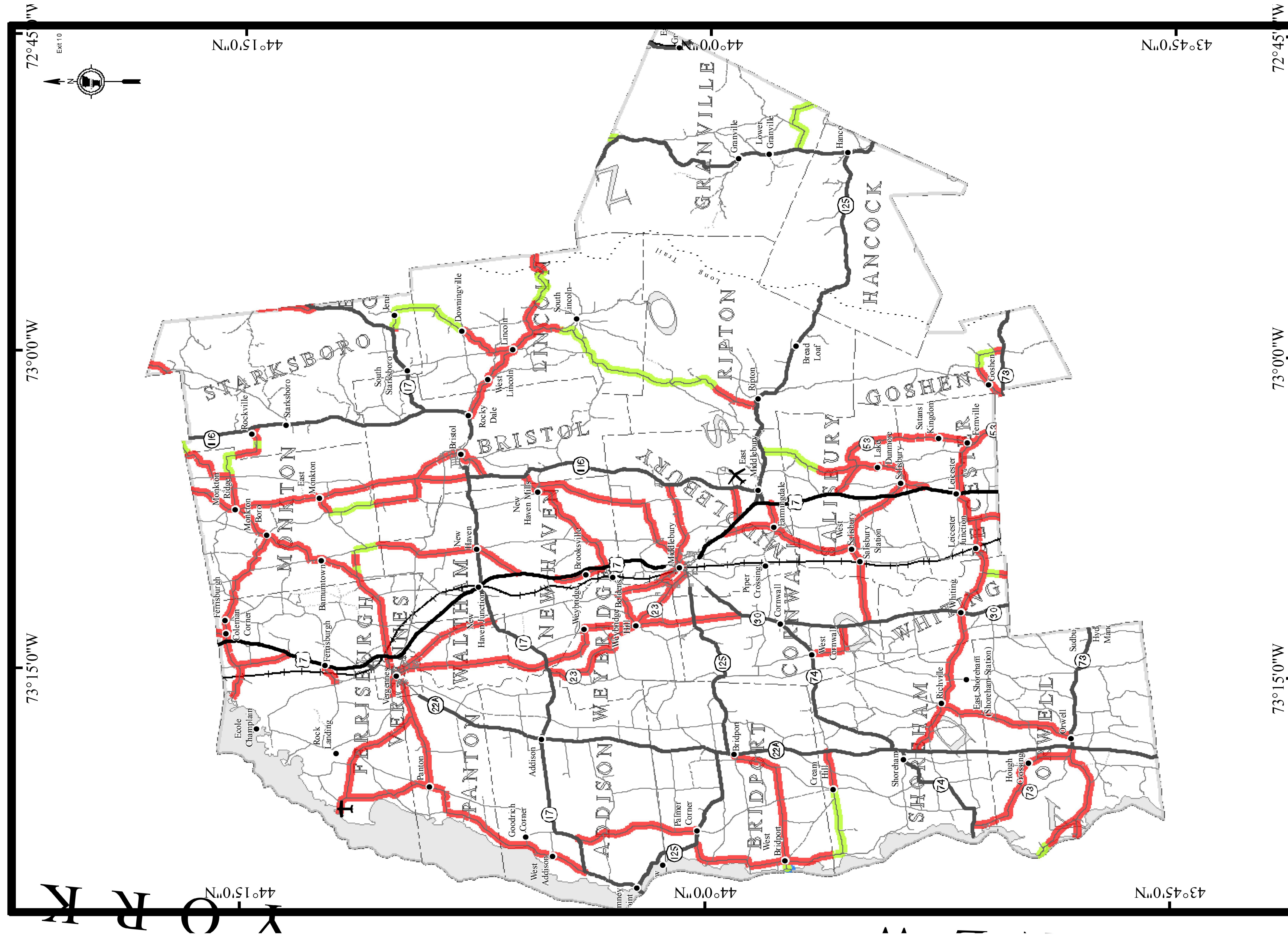


ADDISON COUNTY



CLASS 2 TOWN HIGHWAYS BY SURFACE TYPE

1:209,000 VTRANS - MAPPING UNIT - FEBRUARY 14, 2013

Class 2 Town Highways By Surface

- █ Paved
- █ Gravel
- █ Soil or graded and drained earth

Miles

0 2.5 5 10 15

PROJECT NAME: STATEWIDE SOUTH	PLOT DATE: 10-MAR-2014
PROJECT NUMBER: HES MARK(403)	DRAWN BY: K. SWEET
FILE NAME: t13e680.dgn	CHECKED BY: P. PELOQUIN
DESIGNED BY: K. SWEET	SHEET 25 OF 29
TOWN HIGHWAY COUNTY MAP SHEET I	

For more information regarding this map, please contact the VTrans Mapping Unit at (802) 858-3830 or at VT Agency of Transportation - Mapping Unit, 1 National Life Drive, Montpelier, VT 05603-5001.