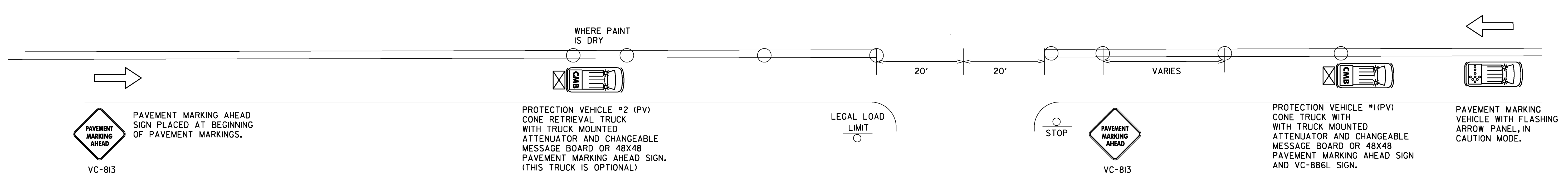
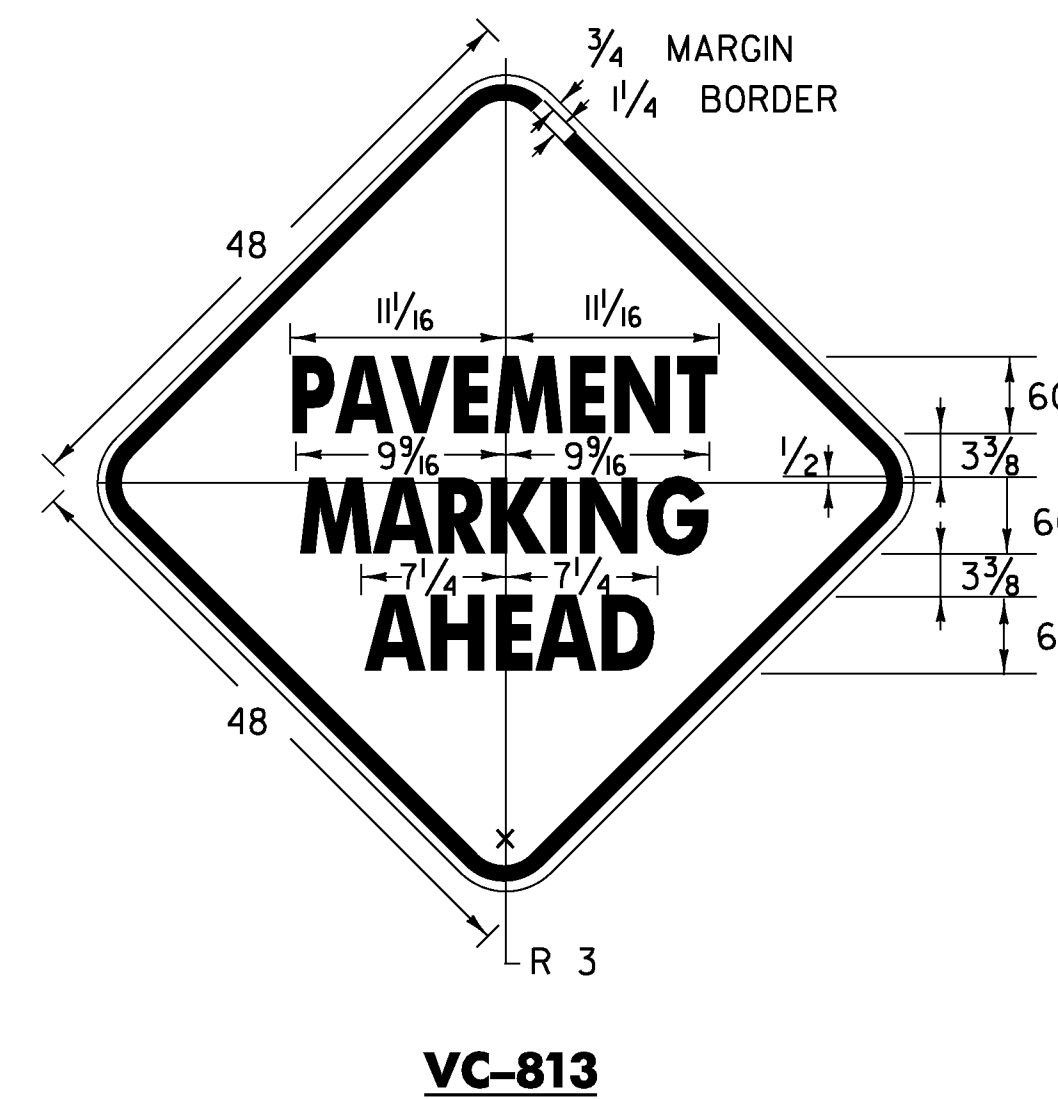


TRAFFIC CONTROL PLAN



NOTES

- I. ALL WORK VEHICLES USED SHALL DISPLAY HIGH-INTENSITY ROTATING, FLASHING, OSCILLATING OR STROBE LIGHTS.
2. ALL PROTECTION VEHICLES SHALL BE EQUIPPED WITH A TRUCK MOUNTED ATTENUATOR WITH A VC-866L SIGN ATTACHED AND A CHANGEABLE MESSAGE BOARD OR 48X48 PAVEMENT MARKING AHEAD SIGN. PAYMENT WILL BE MADE UNDER ITEM 608.50 (TRUCK MOUNTED ATTENUATOR AWV/PV).
3. FLASHING ARROW PANELS MOUNTED TO VEHICLES WILL NOT BE PAID FOR DIRECTLY, BUT WILL BE CONSIDERED INCIDENTAL TO ITEM 641.10 (TRAFFIC CONTROL). FLASHING ARROW PANELS SHALL BE USED IN CAUTION MODE WHEN VEHICLE IS IN TRAVEL LANE.
4. PROTECTION VEHICLE #1 SHALL TRAVEL AT A VARYING DISTANCE FROM PAVEMENT MARKING VEHICLE WHILE DROPPING CONES ON THE WET PAINT TO ENSURE ADEQUATE SIGHT DISTANCE FOR TRAFFIC APPROACHING FROM THE REAR.
5. UNIFORMED TRAFFIC OFFICER (UTO) REQUIRED FOR NIGHT WORK, AND AT OTHER TIMES AS DIRECTED BY THE ENGINEER.
6. THE NUMBER OF CHANNELIZING DEVICES AND OTHER TRAFFIC CONTROL DEVICES SHOWN ON THIS SHEET ARE FOR ILLUSTRATIVE PURPOSES ONLY. THE ACTUAL NUMBER REQUIRED IS TO BE DETERMINED BASED ON FIELD CONDITIONS.
7. CONE VEHICLES SHALL HAVE PROTECTIVE CAGES TO PROTECT THE PERSON PLACING AND RETRIEVING CONES.
8. PAVEMENT MARKING AHEAD SIGNS SHALL BE PLACED AT THE BEGINNING OF PAVEMENT MARKING OPERATION AND AT A MINIMUM OF EVERY 3 MILES. THEY SHOULD ALSO BE PLACED AFTER EVERY NUMBERED STATE HIGHWAY OR MAJOR INTERSECTION INCLUDING COMMERCIAL DRIVES.
9. WORK VEHICLES SHALL PULL OVER TO ALLOW VEHICLES TO PASS AT REASONABLE INTERVALS TO AVOID EXCESSIVE QUEUING AND DELAYS.
10. CONE PICK-UP MAY BE ACCOMPLISHED USING DEDICATED VEHICLE (PV#2) OR BY PROTECTION VEHICLE #1 WHEN PAINT TRUCK IS NOT OPERATING AND PAINT IS DRY.
- II. CONES SHALL BE LEFT IN PLACE UNTIL PAINT IS DRY AND NOT TRACKING.



LEGEND

- INDICATES TRAFFIC FLOW
- FLASHING ARROW PANEL
- TRUCK MOUNTED ATTENUATOR
- CHANGEABLE MESSAGE BOARD
- 28" RETROREFLECTORIZED CONES
- MARKING OPERATIONS VEHICLE

NOT TO SCALE

PROJECT NAME: STATEWIDE SOUTH
PROJECT NUMBER: HES MARK(403)

FILE NAME: t13e680.dgn	PLOT DATE: 10-MAR-2014
PROJECT LEADER: P. COBURN	DRAWN BY: K. SWEET
DESIGNED BY: K. SWEET	CHECKED BY: P. PELOQUIN
TRAFFIC CONTROL PLAN	SHEET 24 OF 29