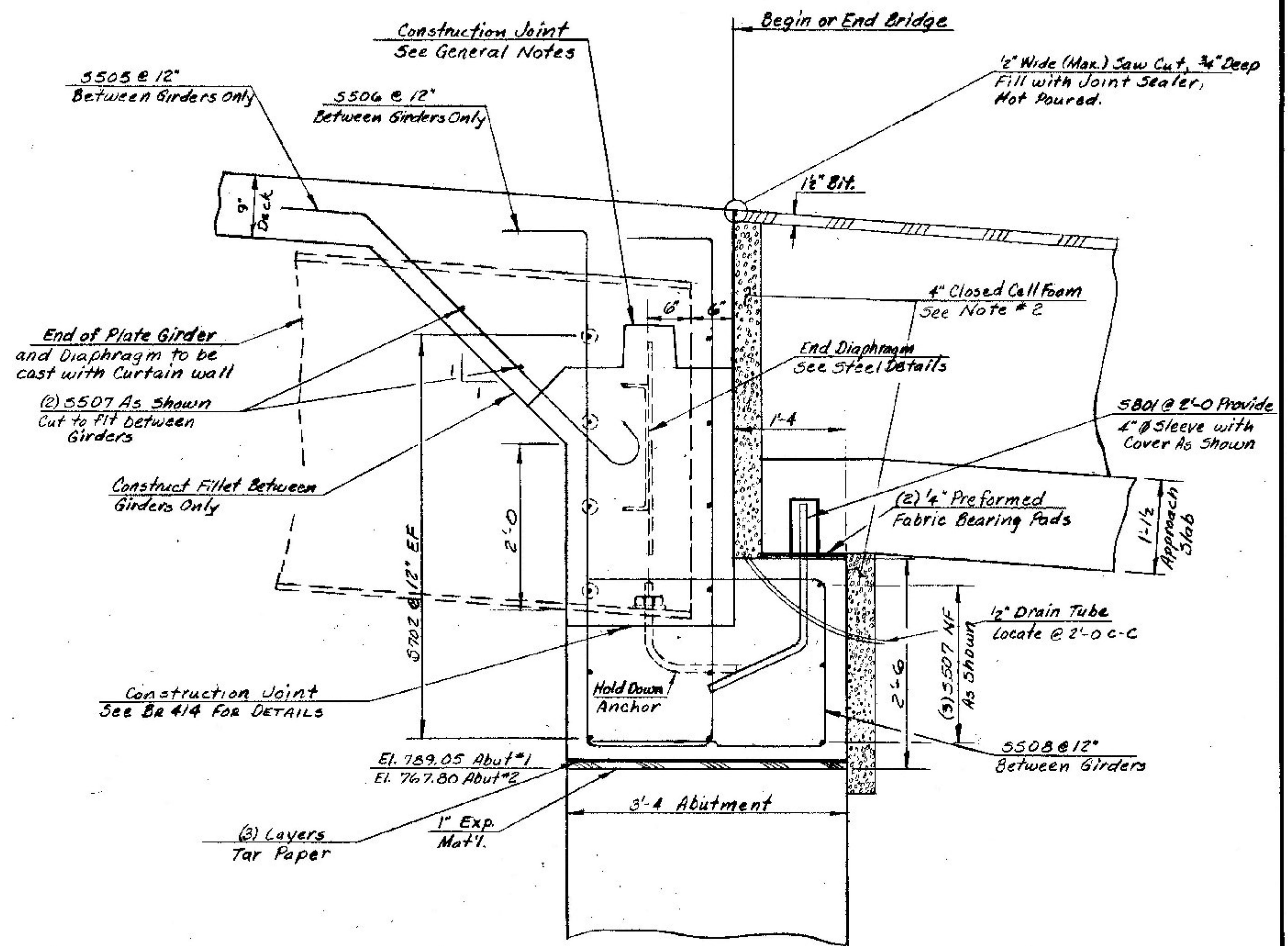
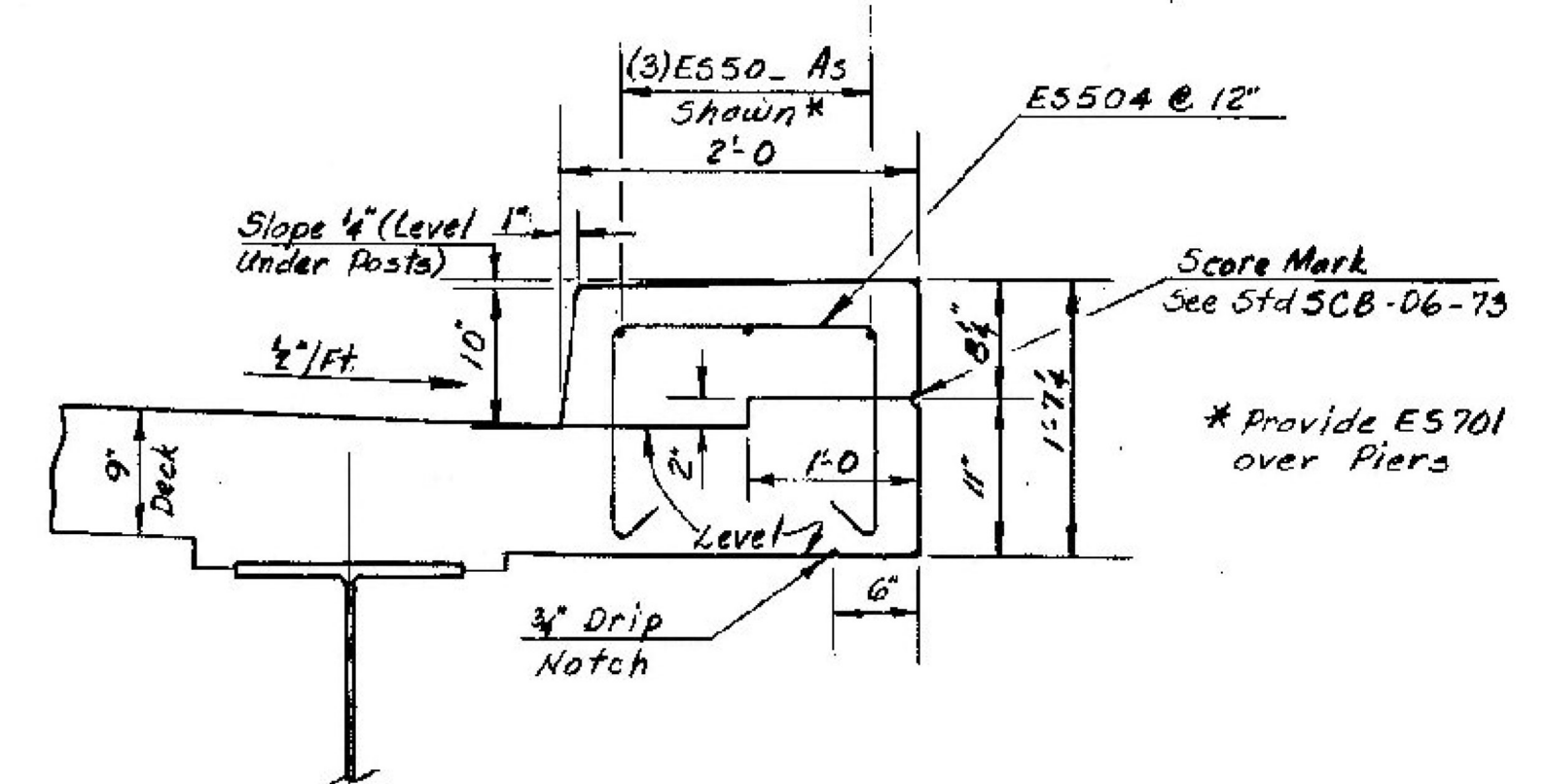


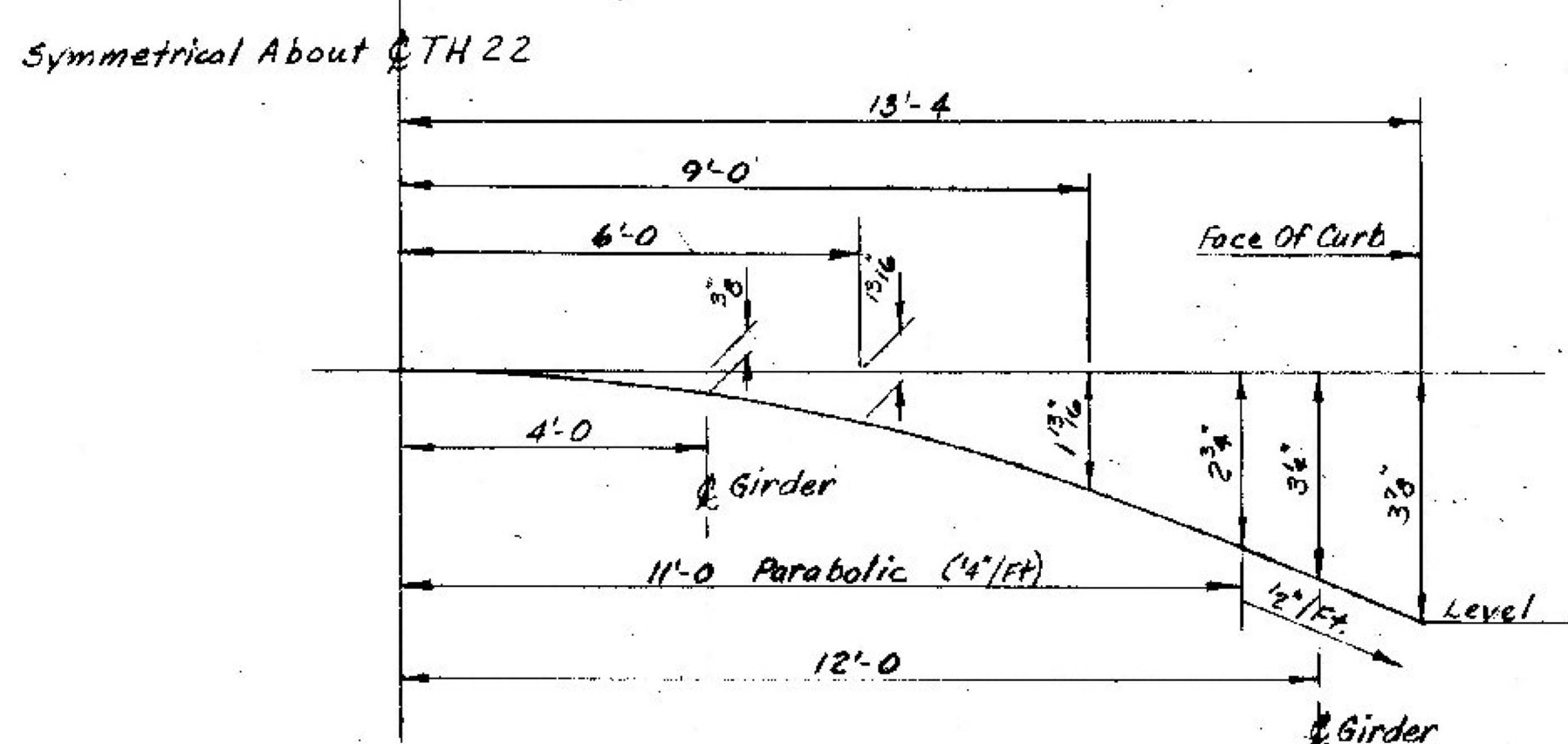
~ TYPICAL SECTION ~
Scale 1/2" = 1'-0"



~ TYPICAL CURTAIN WALL DETAIL ~
Scale 1" = 1'-0"
Shown Normal To Abutment



~ TYPICAL CURB SECTION ~
Scale 1" = 1'-0"



~ PARABOLIC DETAIL ~
Scale = 1" = 2'-0" Horizontal
5" = 1'-0" Vertical

NOTES

1. COST FOR EXPANSION MATERIAL, TAR PAPER, PREFORMED FABRIC PADS, CLOSED CELL FOAM AND DRAIN TUBES TO BE INCLUDED IN THE UNIT PRICE BID FOR CONCRETE, CLASS "B".
2. SEE GENERAL SPECIAL PROVISIONS, SUBSECTION 707.23 FOR DETAILS OF CLOSED CELL FOAM EXPANSION MATERIAL.
3. THE COST FOR 4" SLEEVES WITH COVER SHALL BE INCLUDED WITH THE UNIT PRICE BID FOR REINFORCING STEEL.

STATE OF VERMONT	
AGENCY OF TRANSPORTATION	
TOWN OF RUTLAND	Bridge No. 4
HIGHWAY NO. CLASS 3, TH 22	Log Sta.
TH 22 OVER ART. US 4, EB & WB	Surr. Sta. 887+80.2
TYPICAL SECTION	
Designed by R. ALDRICH	Drawn by M. CERUTTI
Checked by R. Aldrich	Bridge Design Supervisor
date 7/93	E. L. Dooley date 2-93
PROJECT WEST RUTLAND-RUTLAND	PROJECT NO. F020-1(10)
Bridge Sheet No. BR405	Sheet 192 of 457

CASTLETON-RUTLAND
BF MEMB (37)
SHEET 23 OF 28
BRIDGE NO. D18
FOR REFERENCE ONLY