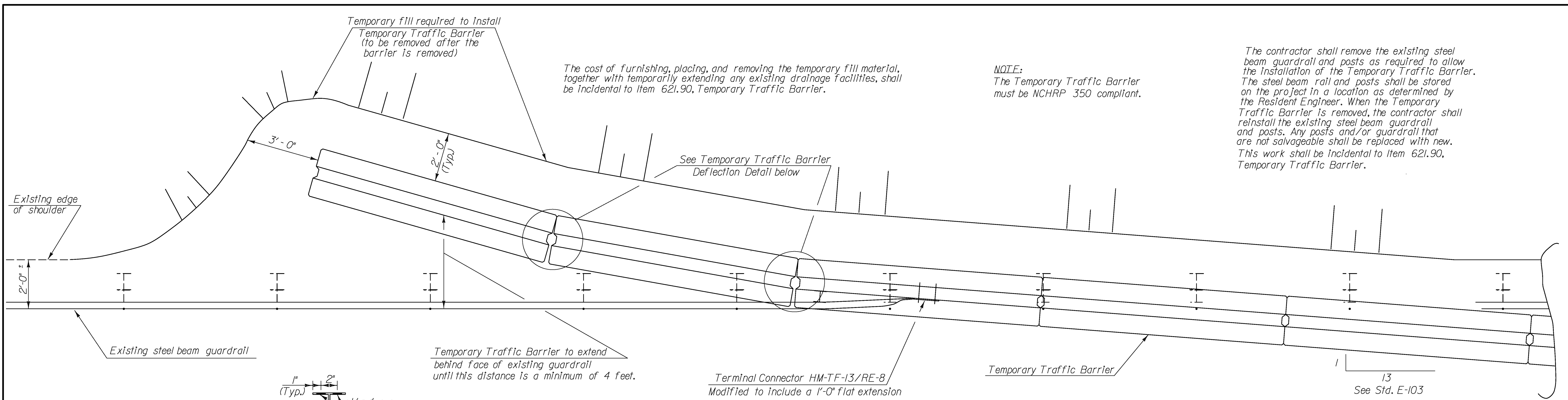
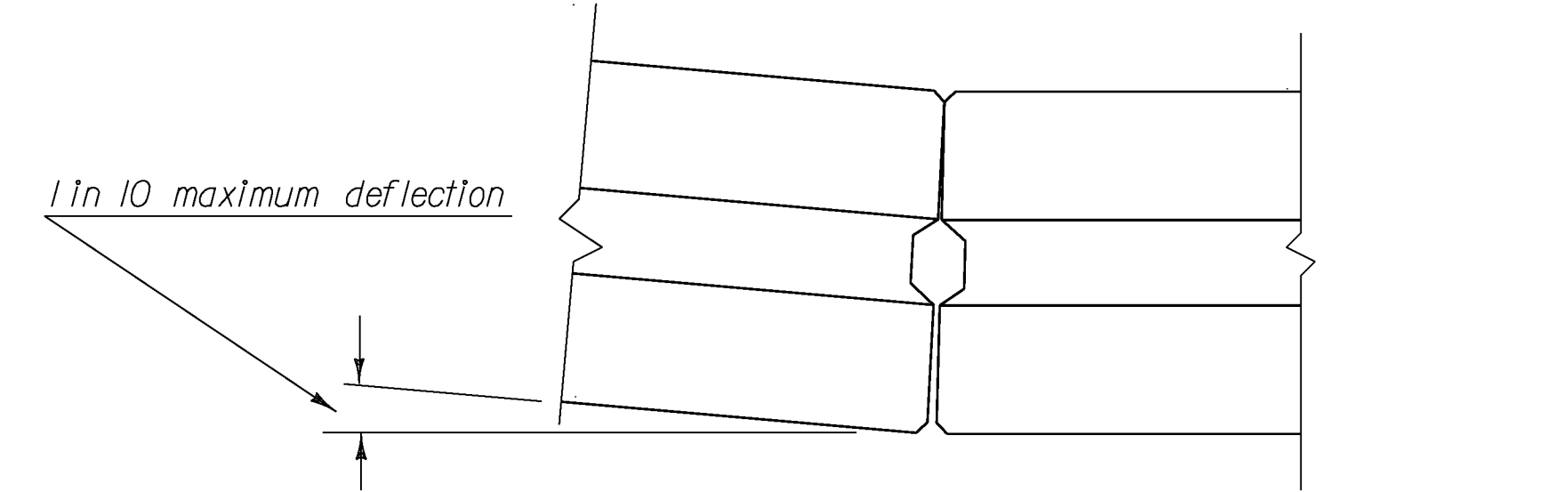


CLD 13-0203 MODEL: Bar 01



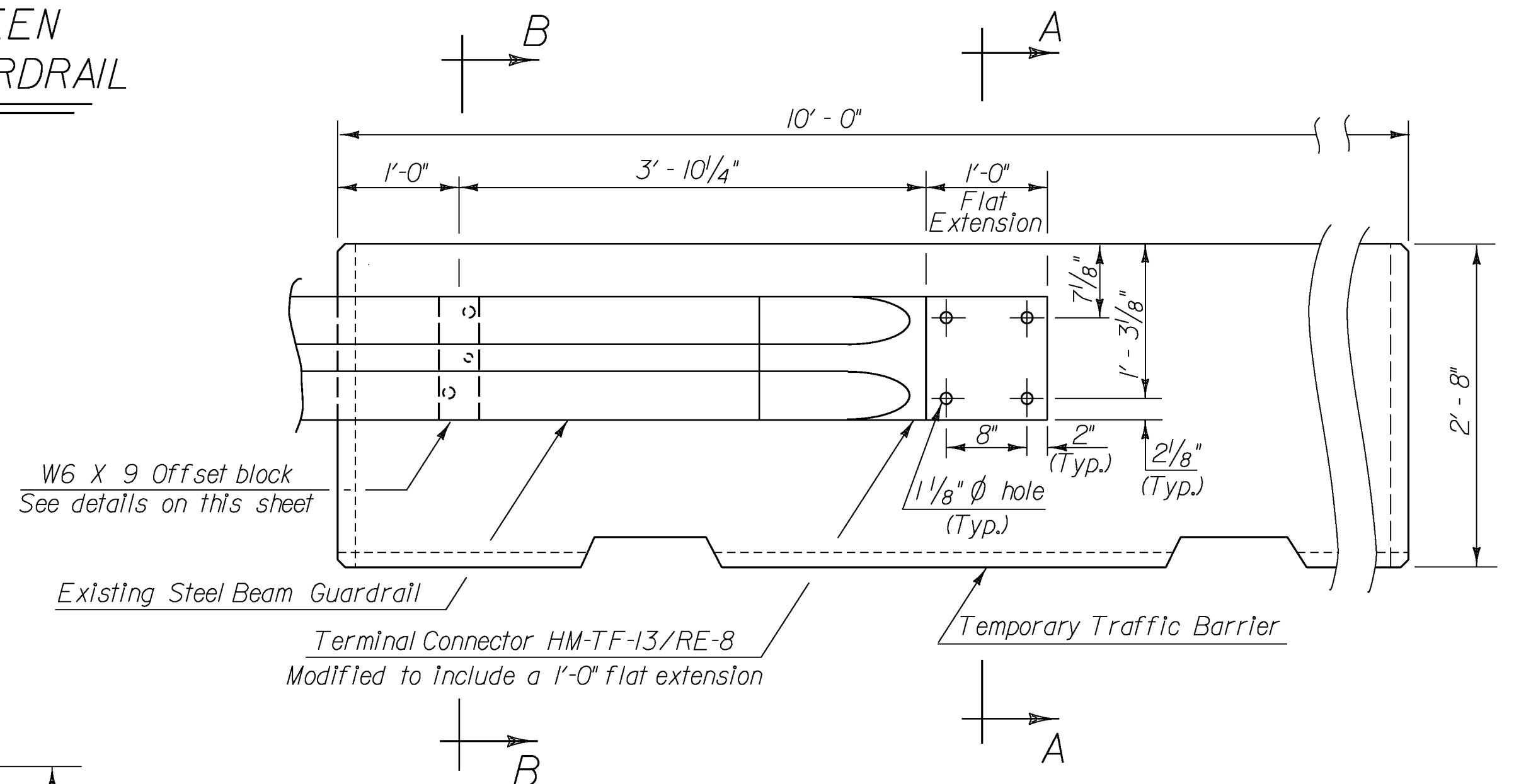
PLAN VIEW SHOWING POSITIVE CONNECTION BETWEEN TEMPORARY TRAFFIC BARRIER AND EXISTING GUARDRAIL

$\frac{1}{2}'' = 1' - 0''$



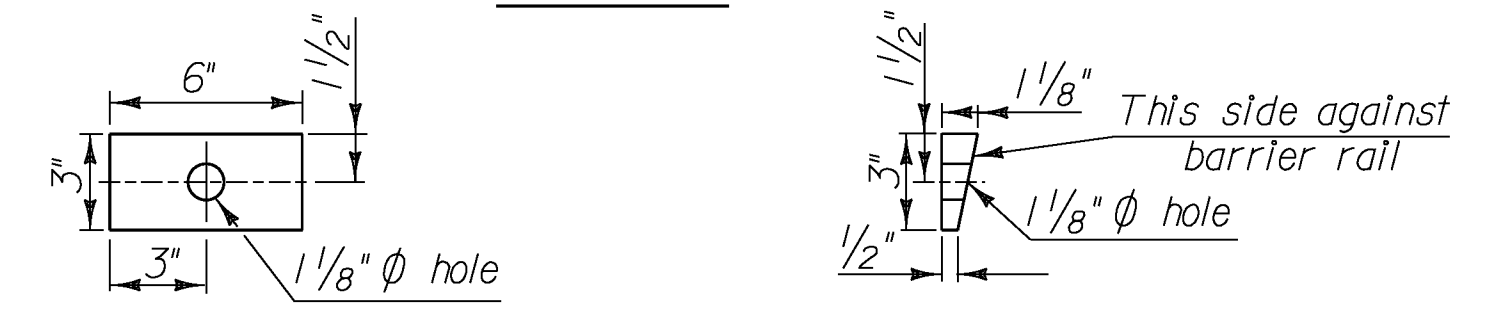
TEMPORARY TRAFFIC BARRIER DEFLECTION DETAIL

NTS



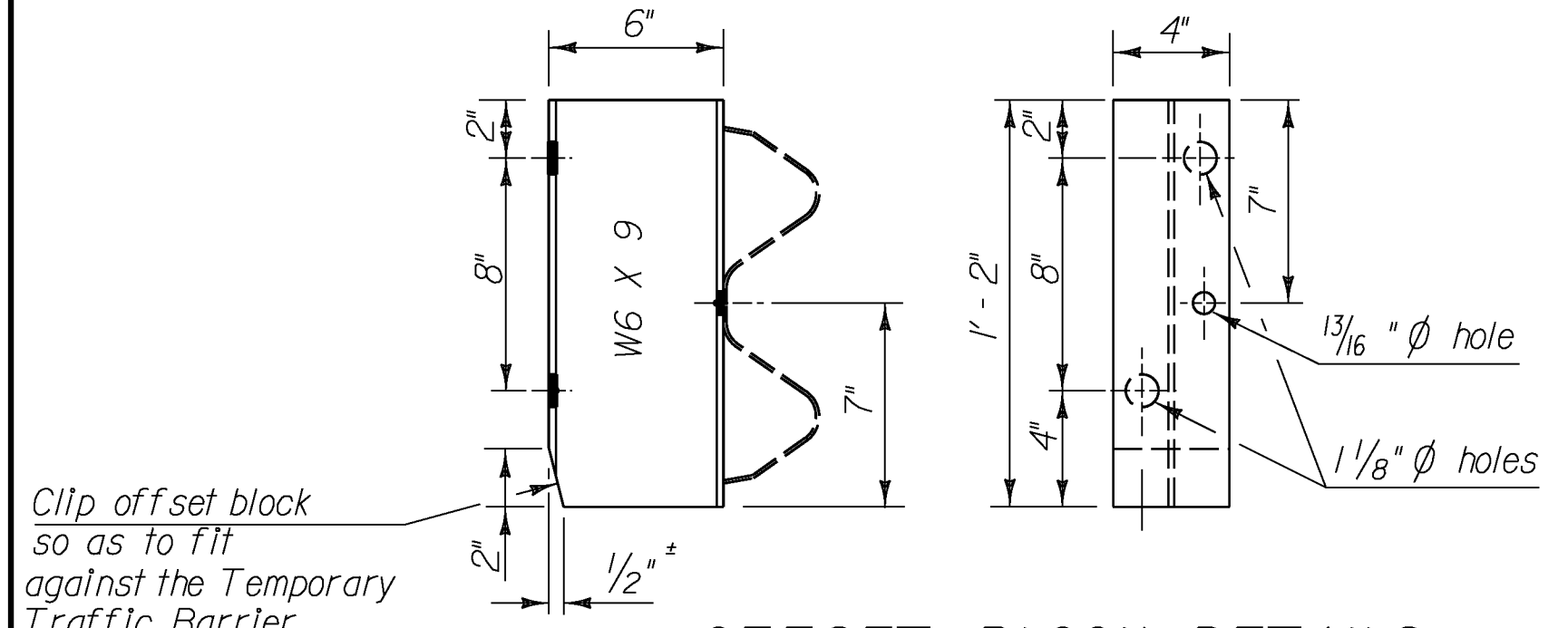
ELEVATION VIEW SHOWING POSITIVE CONNECTION BETWEEN TEMPORARY TRAFFIC BARRIER AND EXISTING GUARDRAIL

$1'' = 1' - 0''$



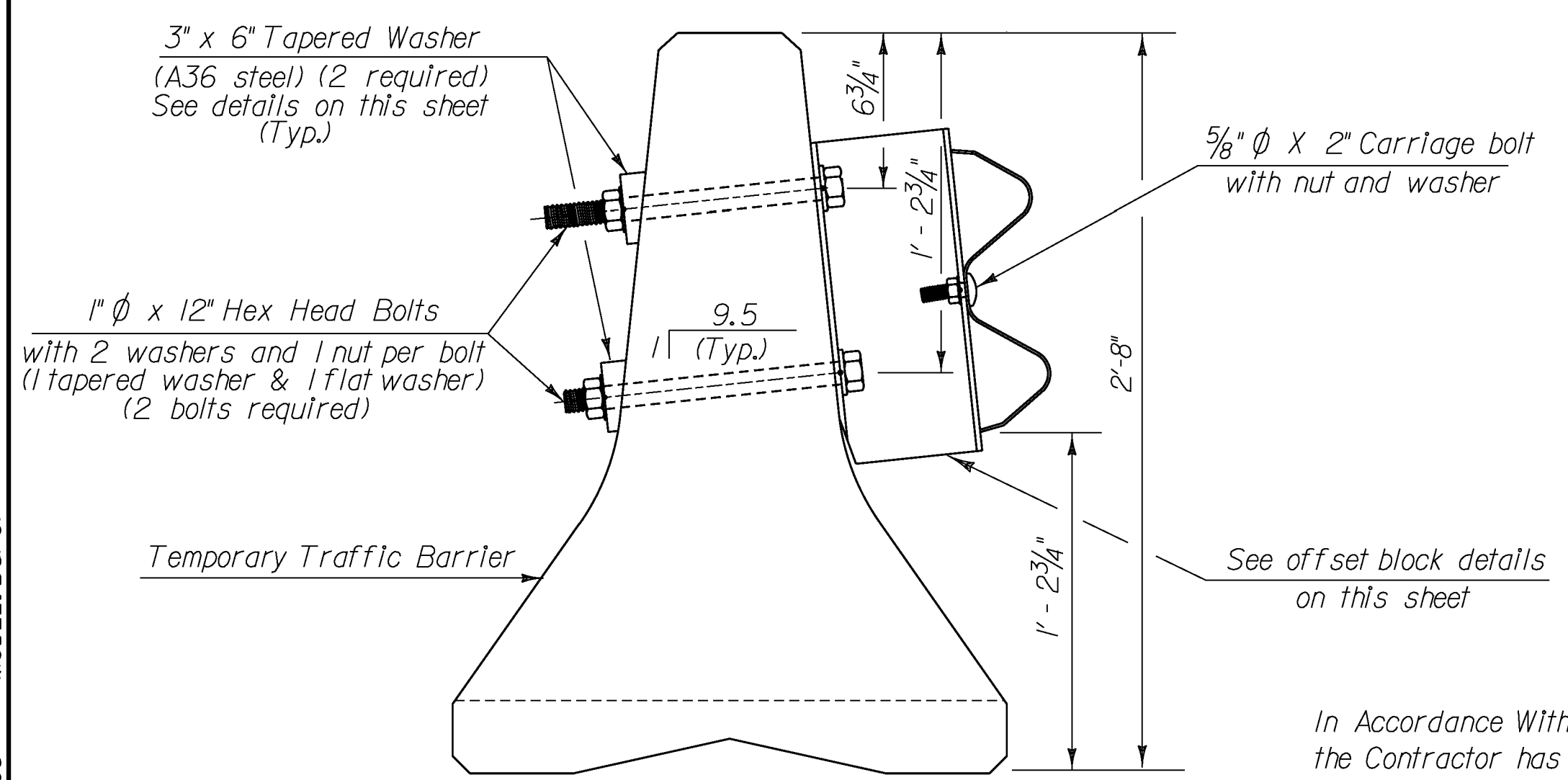
TAPERED WASHER DETAILS

$1'' = 6''$

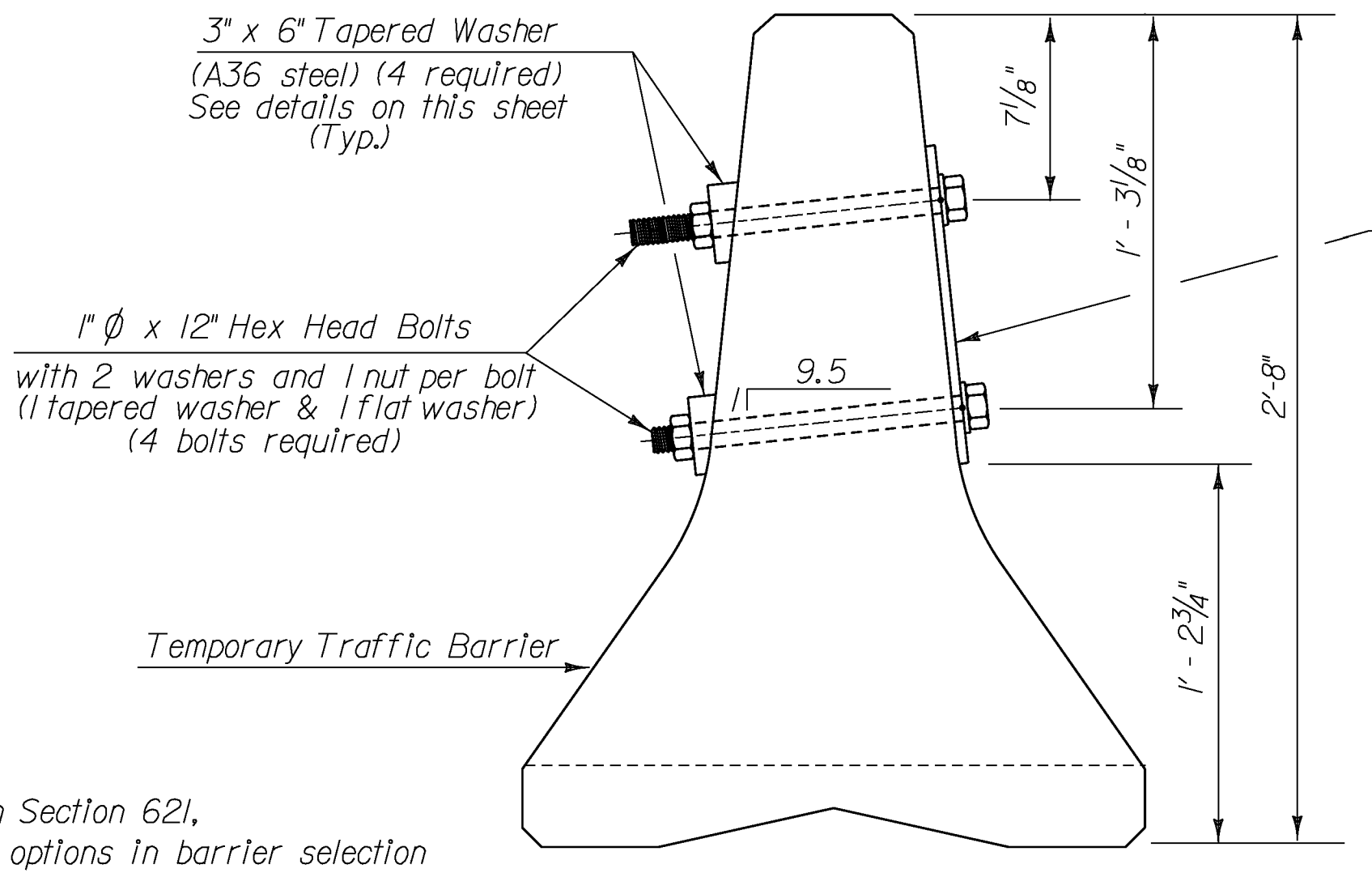


OFFSET BLOCK DETAILS

$1'' = 6''$



SECTION B-B



SECTION A-A

$1'' = 6''$

In Accordance With Section 621, the Contractor has options in barrier selection

PROJECT NAME:	CASTLETON-RUTLAND
PROJECT NUMBER:	BF MEMB(37)
FILE NAME:	z13b116-barrier.dgn
PROJECT LEADER:	JPB
DESIGNED BY:	NDC
TRAFFIC CONTROL BARRIER SHEET	
PLOT DATE:	3/21/2014
DRAWN BY:	MWS
CHECKED BY:	SRB
SHEET	10 OF 28