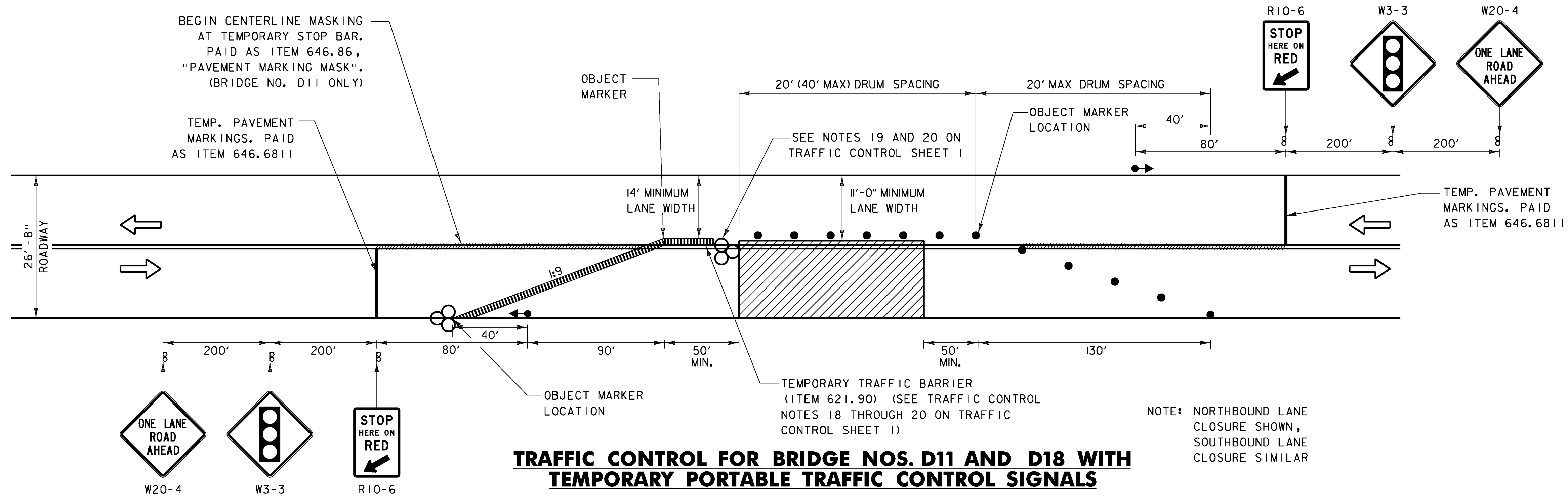
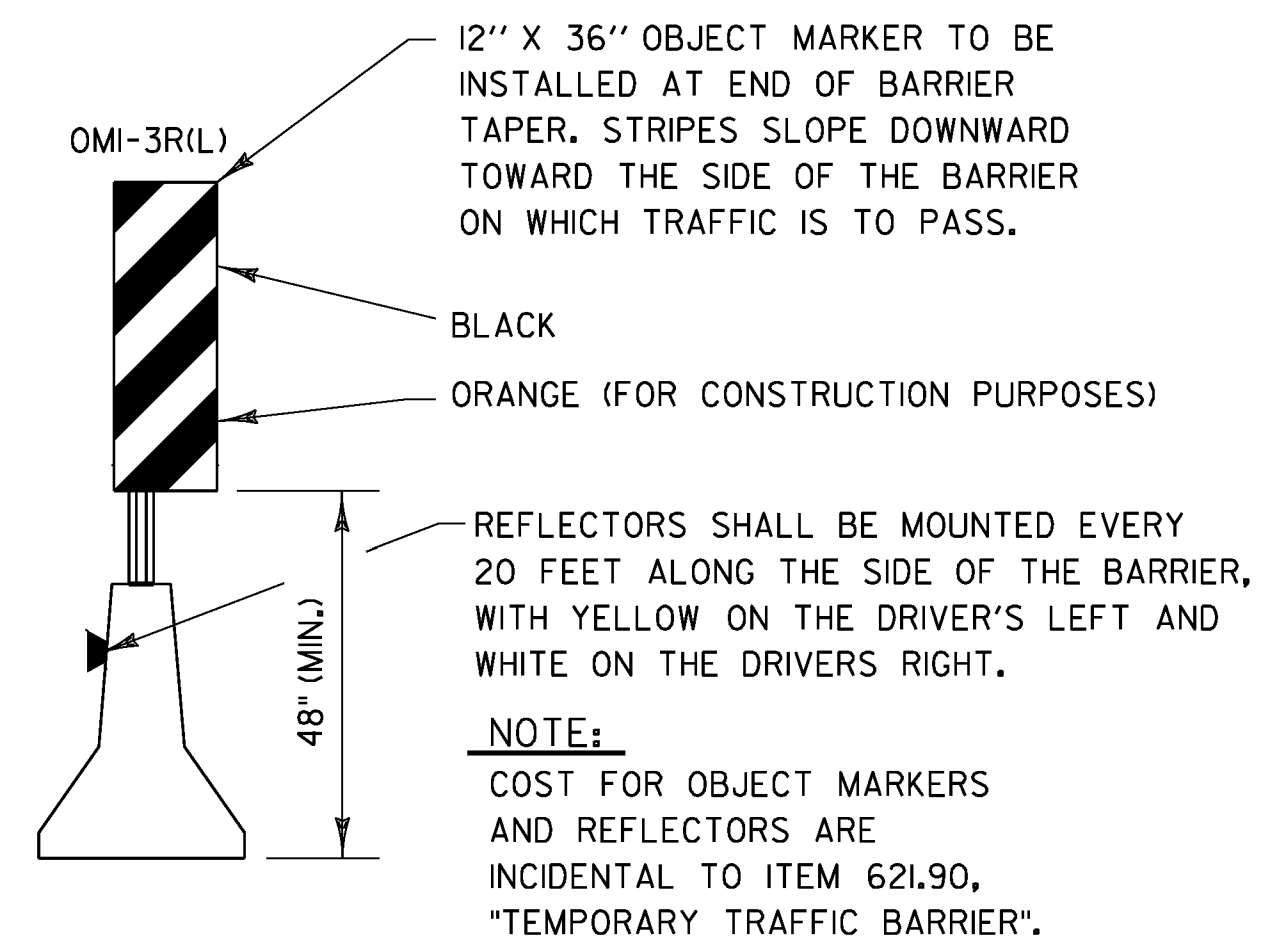


TRAFFIC CONTROL FOR BRIDGE NO. 2 WITH TEMPORARY PORTABLE TRAFFIC CONTROL SIGNALS



TRAFFIC CONTROL FOR BRIDGE NOS. D11 AND D18 WITH TEMPORARY PORTABLE TRAFFIC CONTROL SIGNALS



OBJECT MARKER

LEGEND

- FLOW OF TRAFFIC
- RETROREFLECTIVE PLASTIC DRUM
- WORK AREA
- ENERGY ABSORPTION ATTENUATOR (ITEM 621.56)
- TEMPORARY PORTABLE TRAFFIC CONTROL SIGNAL (SEE NOTES ON TRAFFIC CONTROL SHEET 1)
- TEMPORARY TRAFFIC BARRIER (ITEM 621.90)
- PORTABLE CHANGEABLE MESSAGE SIGN

PROJECT NAME: CASTLETON-RUTLAND
PROJECT NUMBER: BF MEMB(37)

FILE NAME: z13b116-tcp.dgn
PROJECT LEADER: JPB
DESIGNED BY: NDC
TRAFFIC CONTROL SHEET 2

PLOT DATE: 3/21/2014
DRAWN BY: MWS
CHECKED BY: SRB
SHEET 5 OF 28