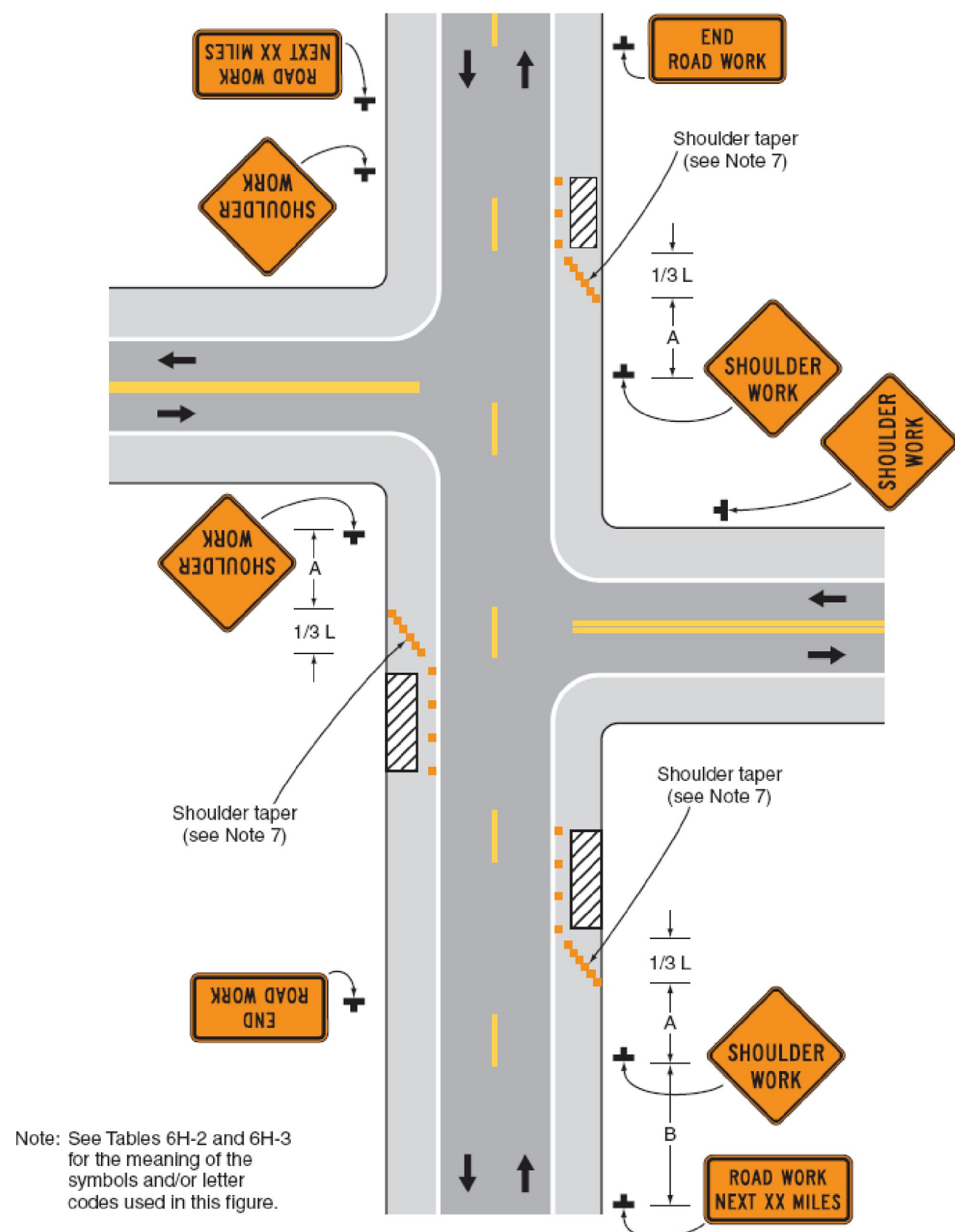
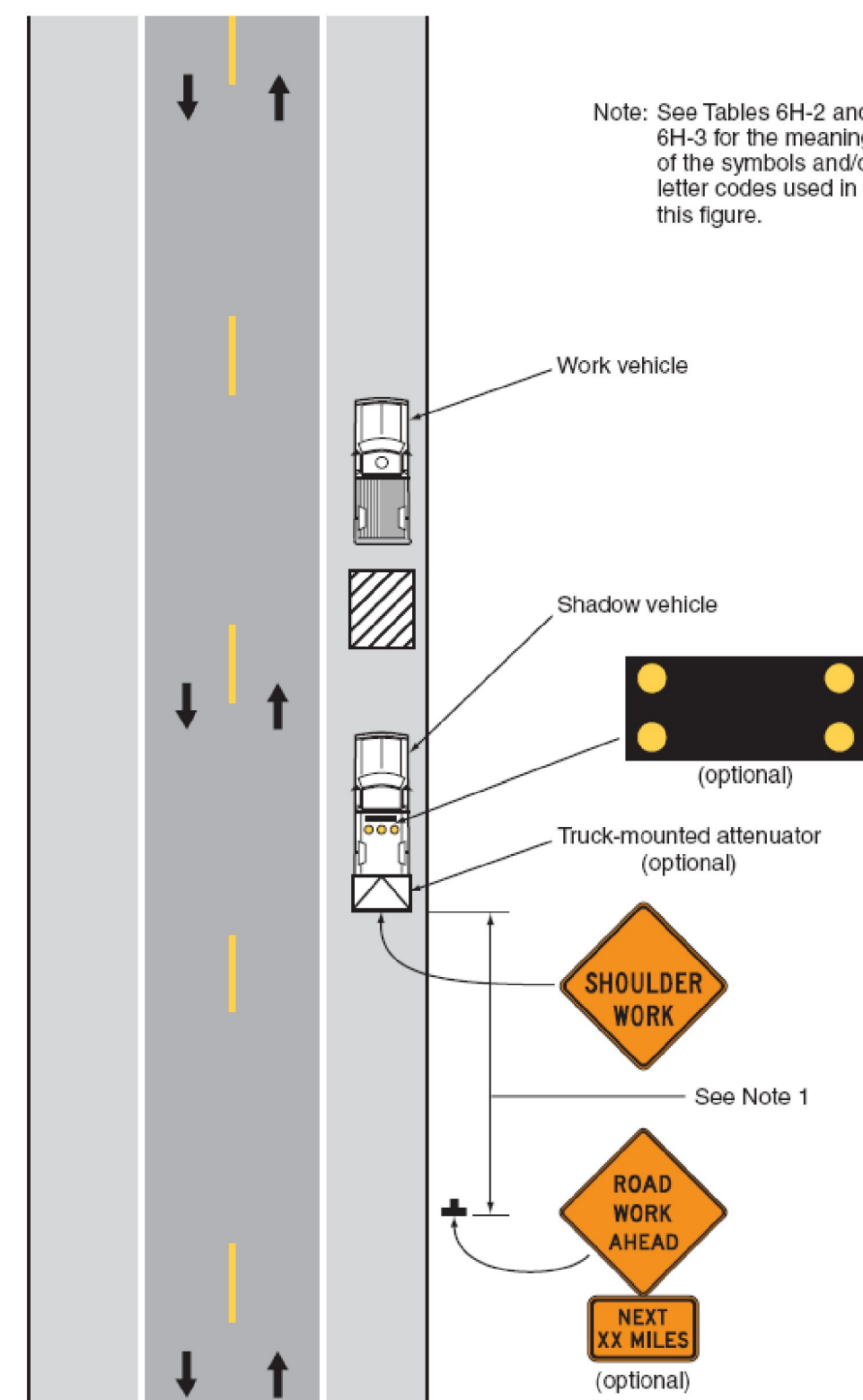


Figure 6H-3. Work on the Shoulders (TA-3)



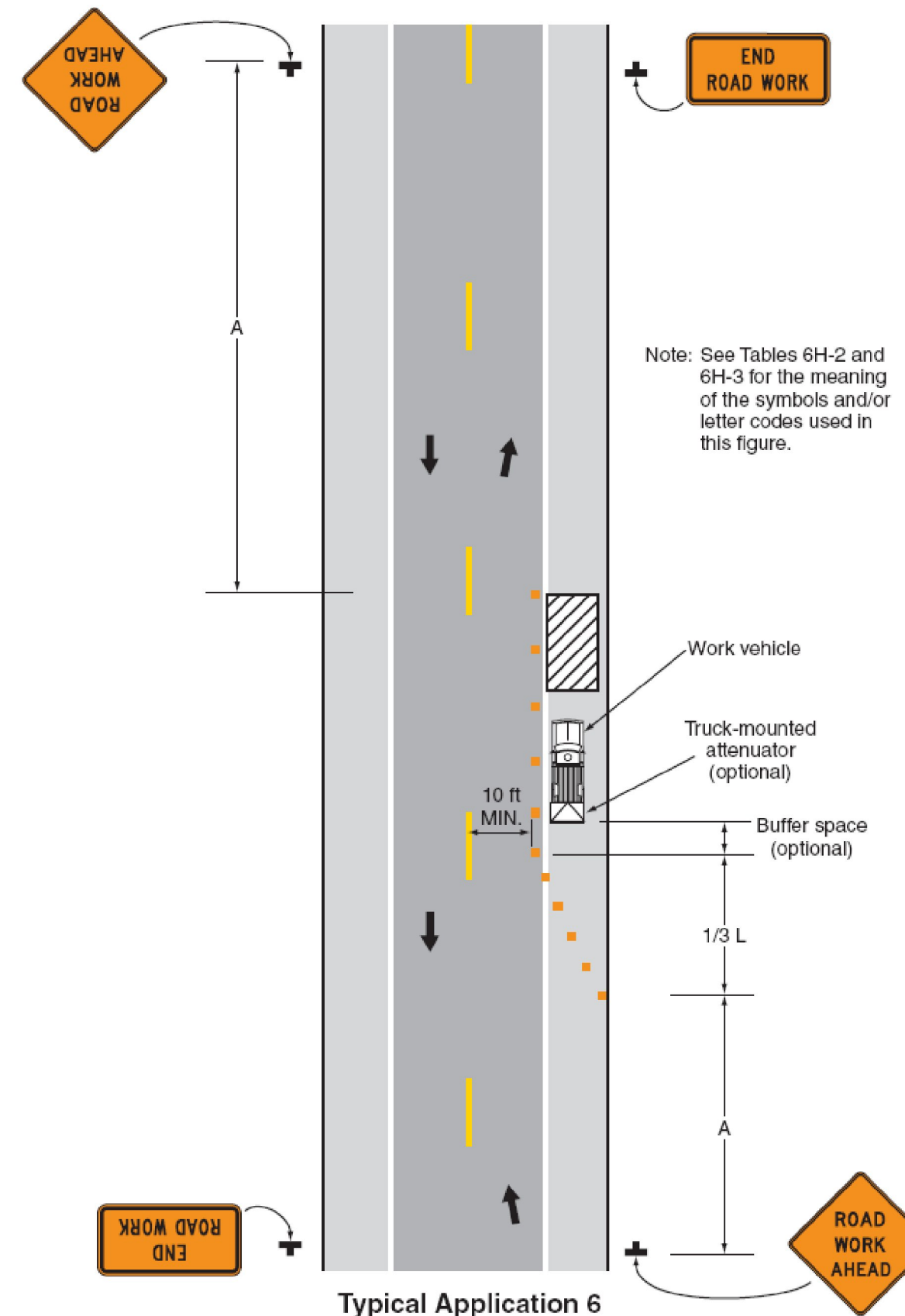
Typical Application 3

Figure 6H-4. Short-Duration or Mobile Operation on a Shoulder (TA-4)



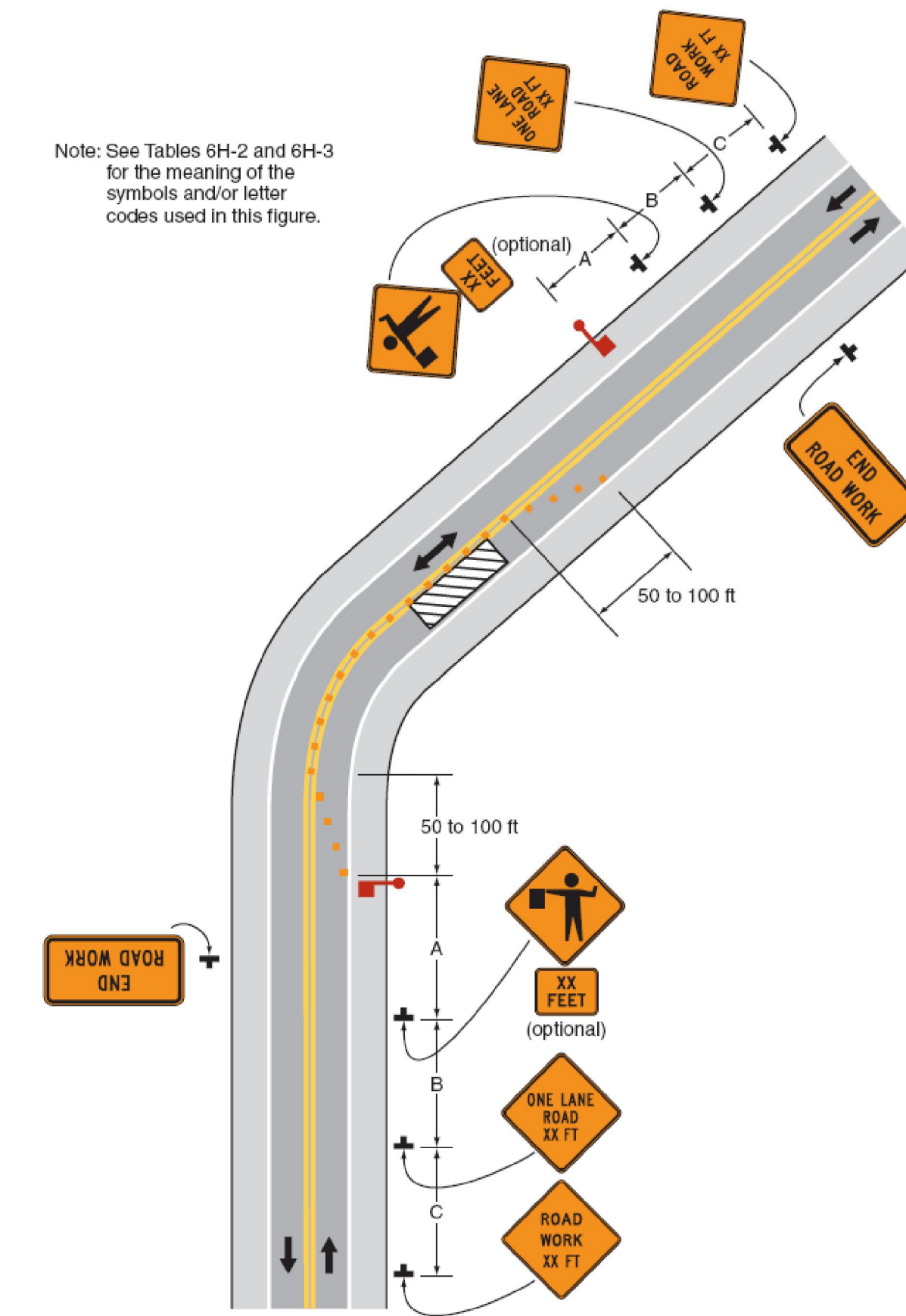
Typical Application 4

Figure 6H-6. Shoulder Work with Minor Encroachment (TA-6)



Typical Application 6

Figure 6H-10. Lane Closure on a Two-Lane Road Using Flaggers (TA-10)



Typical Application 10