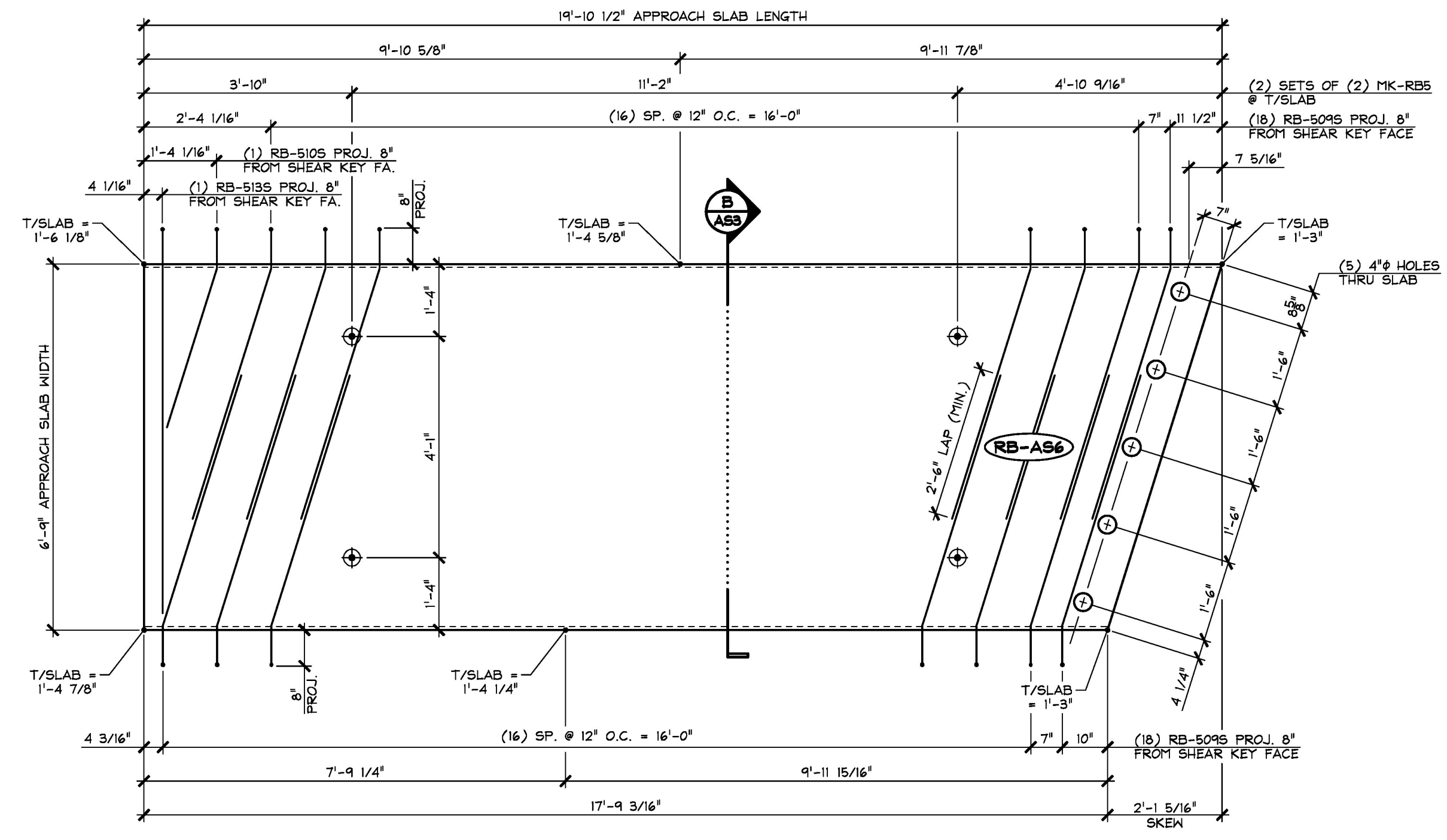


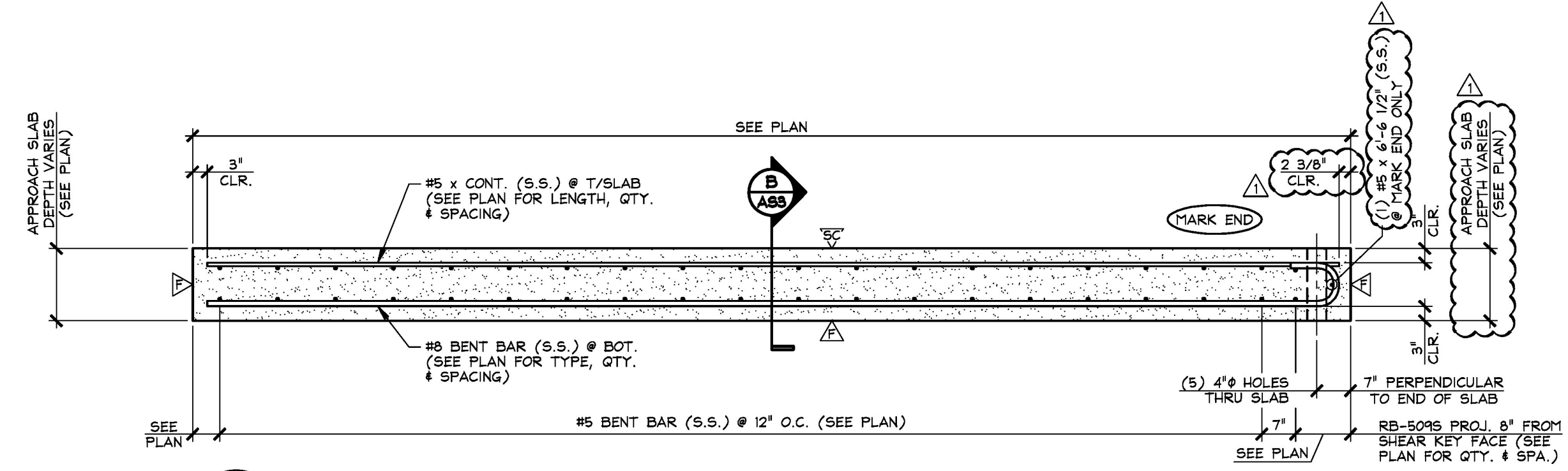
1 PLAN VIEW IN FORM
ASS
1/2" = 1'-0"



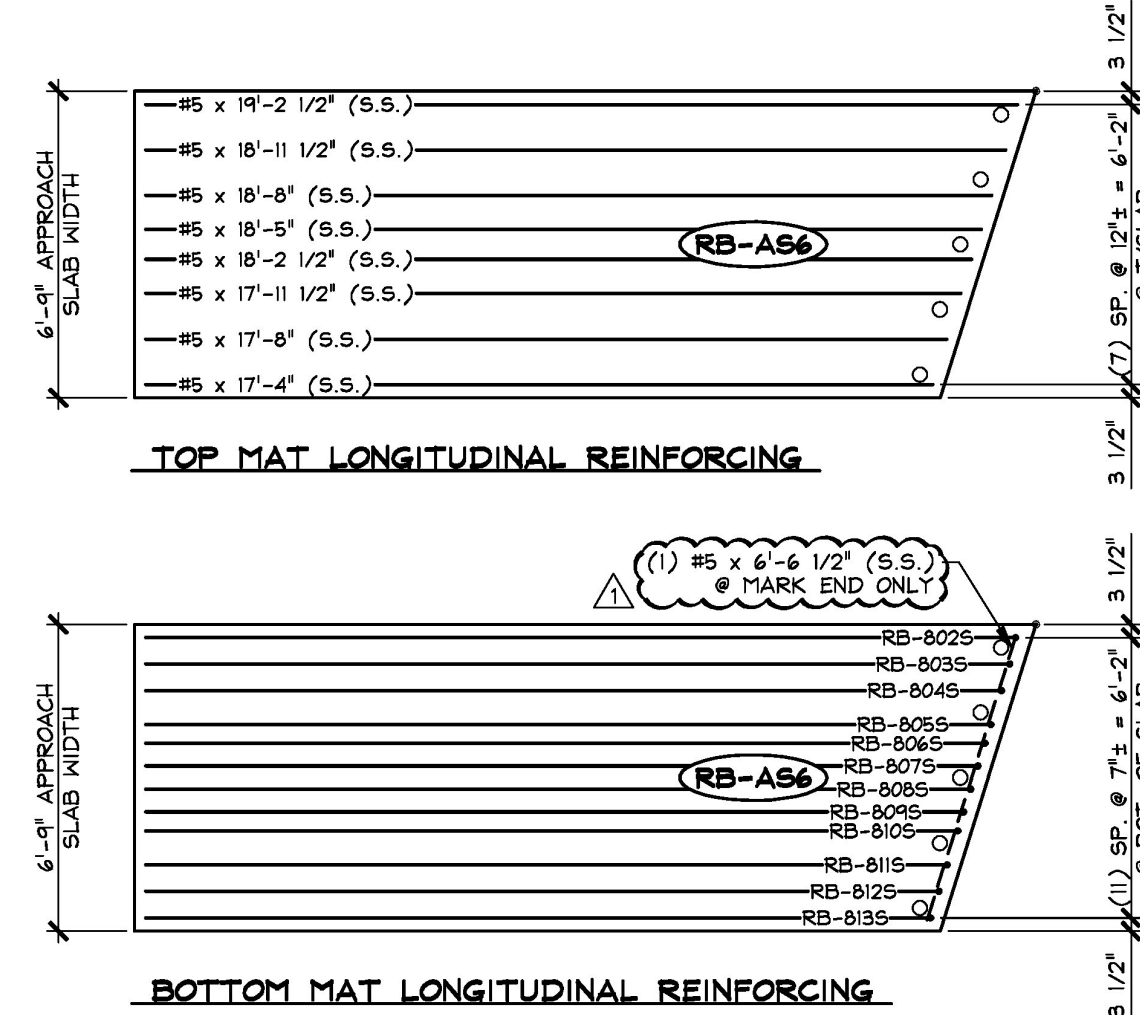
2 PLAN VIEW IN FORM
ASS
1/2" = 1'-0"

△ DENOTES FORM FINISH
▽ DENOTES SMOOTH SCREED FINISH
▲ DENOTES ROUGHENED FINISH (SEE GENERAL NOTE #9, SHEET 'F2')

SHOP NOTE:
28-DAY STRENGTH = 5,000 PSI
HANDLING STRENGTH = 3,500 PSI
DESIGN MIX #445M5CC



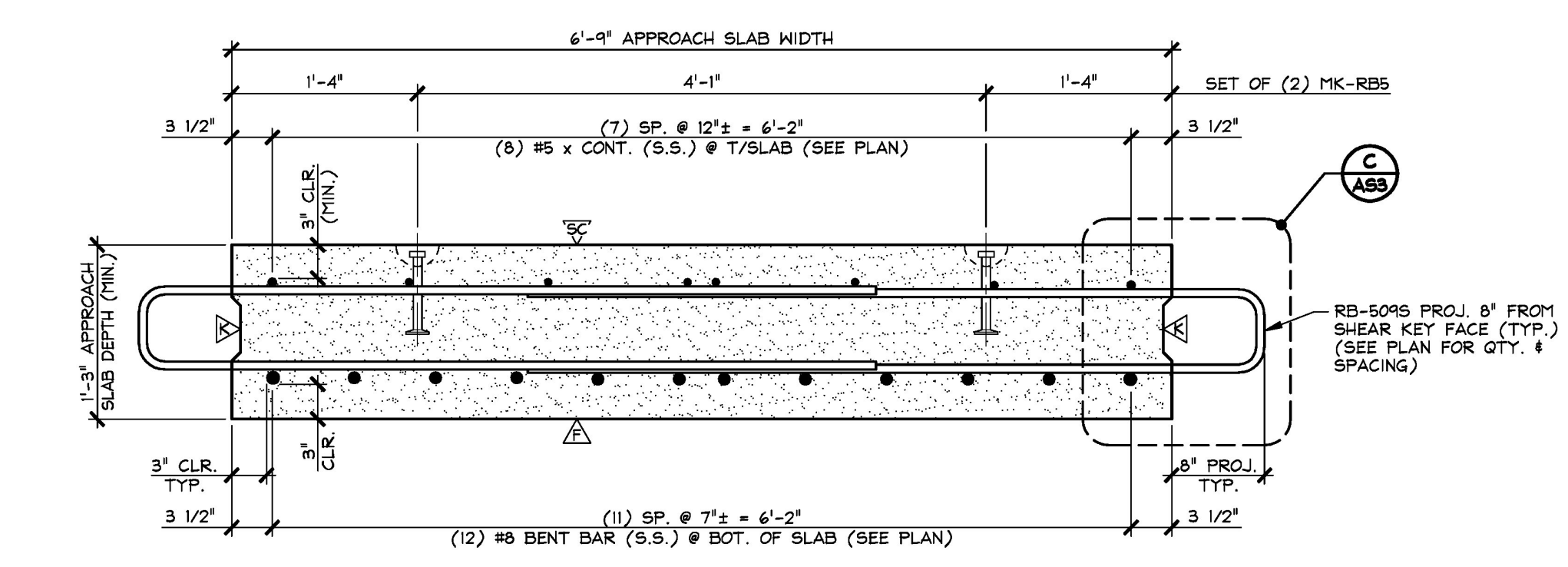
A LONGITUDINAL SECTION
ASS
1/2" = 1'-0"



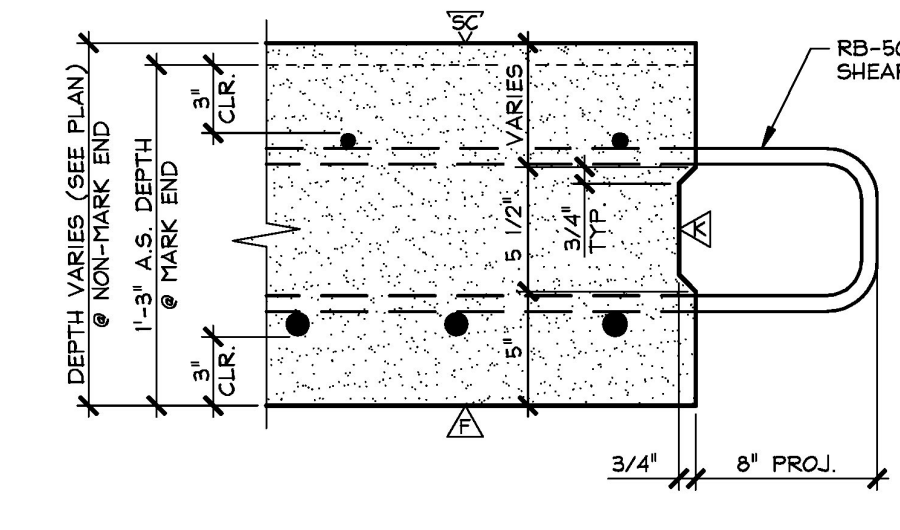
3 'RB-AS6' LONGITUDINAL REINF. PLANS
ASS
1/4" = 1'-0"

Vermont Agency of Transportation
RECEIVED
CK'D BY T.Y. Lin International OK'D BY J. Olund
January 24, 2017
RESUBMIT No Approved
BY D. Bonaue DATE 01/25/17
1-3-17 REVISED AS NOTED

| MATERIAL LIST / APPROACH SLAB | | | | |
|-------------------------------|---------|------------------------------------|-----------|-----|
| ITEM | MARK | DESCRIPTION | QTY./SLAB | |
| | | | AS5 | AS6 |
| 1 | RB-5095 | #5 BENT BAR (STAINLESS STEEL) | 40 | 36 |
| 2 | RB-5105 | #5 BENT BAR (STAINLESS STEEL) | | 1 |
| 3 | RB-5135 | #5 BENT BAR (STAINLESS STEEL) | | 1 |
| 4 | | #5 x 19'-6" (STAINLESS STEEL) | 8 | |
| 5 | | #5 x 19'-2 1/2" (STAINLESS STEEL) | | 1 |
| 6 | | #5 x 18'-11 1/2" (STAINLESS STEEL) | | 1 |
| 7 | | #5 x 18'-8" (STAINLESS STEEL) | | 1 |
| 8 | | #5 x 18'-5" (STAINLESS STEEL) | | 1 |
| 9 | | #5 x 18'-2 1/2" (STAINLESS STEEL) | | 1 |
| 10 | | #5 x 17'-11 1/2" (STAINLESS STEEL) | | 1 |
| 11 | | #5 x 17'-8" (STAINLESS STEEL) | | 1 |
| 12 | | #5 x 17'-4" (STAINLESS STEEL) | | 1 |
| 13 | | #5 x 6'-6 1/2" (STAINLESS STEEL) | 1 | 1 |
| 14 | RB-8015 | #5 BENT BAR (STAINLESS STEEL) | 12 | |
| 15 | RB-8025 | #5 BENT BAR (STAINLESS STEEL) | | 1 |
| 16 | RB-8035 | #5 BENT BAR (STAINLESS STEEL) | | 1 |
| 17 | RB-8045 | #5 BENT BAR (STAINLESS STEEL) | | 1 |
| 18 | RB-8055 | #5 BENT BAR (STAINLESS STEEL) | | 1 |
| 19 | RB-8065 | #5 BENT BAR (STAINLESS STEEL) | | 1 |
| 20 | RB-8075 | #5 BENT BAR (STAINLESS STEEL) | | 1 |
| 21 | RB-8085 | #5 BENT BAR (STAINLESS STEEL) | | 1 |
| 22 | RB-8095 | #5 BENT BAR (STAINLESS STEEL) | | 1 |
| 23 | RB-8105 | #5 BENT BAR (STAINLESS STEEL) | | 1 |
| 24 | RB-8115 | #5 BENT BAR (STAINLESS STEEL) | | 1 |
| 25 | RB-8125 | #5 BENT BAR (STAINLESS STEEL) | | 1 |
| 26 | RB-8135 | #5 BENT BAR (STAINLESS STEEL) | | 1 |
| 27 | MK-RB5 | 4T x 7 1/8" SWIFT LIFTER (GALV.) | 4 | 4 |
| 28 | | 4" I.D. x 1'-3" PVC SLEEVE | 5 | 5 |



B TRANSVERSE SECTION
ASS
1" = 1'-0"



C SHEAR KEY SECTION
ASS
1/2" = 1'-0"

T.Y. LIN INTERNATIONAL
THE STAMPED DOCUMENTS ARE HEREBY:
-x- APPROVED
- - - APPROVED AS NOTED
- - - REVISE AND RESUBMIT
SEE TRANSMITTAL FOR ADDITIONAL INFORMATION AS APPLICABLE.
THIS REVIEW IS FOR GENERAL CONFORMANCE WITH DESIGN CONCEPT ONLY. ANY DEVIATION FROM THE PLANS OR SPECIFICATIONS NOT CLEARLY NOTED BY THE CONTRACTOR HAS NOT BEEN REVIEWED. REVIEW BY THE ENGINEER SHALL NOT RELIEVE THE CONTRACTOR OF THE CONTRACTUAL RESPONSIBILITY FOR ANY ERRORS OR DEVIATION FROM THE CONTRACT REQUIREMENTS.
JOSH OLUND REVIEWER January 25, 2017 DATE

APPROVAL STAMP:
1-3-17 REVISED AS NOTED

J.P. CARRARA & SONS INC.
Precast & Prestress Manufacturer
244 GAGE STR., MIDDLEBURY, VERMONT 05750 Phone: (802)388-6361 Fax: (802)388-9010

J.P. SICARD, INC.
CONTRACTOR
BARTON, VERMONT

STATE OF VERMONT AGENCY OF TRANSPORTATION
COUNTY OF ORLEANS

DATE: NOV. 18, 2016
SCALE: NOTED

VILLAGE OF BARTON
TH 4 (ROARING BROOK RD.), RURAL MINOR COLLECTOR
BRIDGE NO.: 58 PROJECT NO.: BO 1449(33)

CHKD: A.S. DFTM: B.L.
JOB NO: 2349B-016

PRECAST APPROACH SLAB DETAILS

DWG. NO: **AS3**
ROARING BROOK RD.