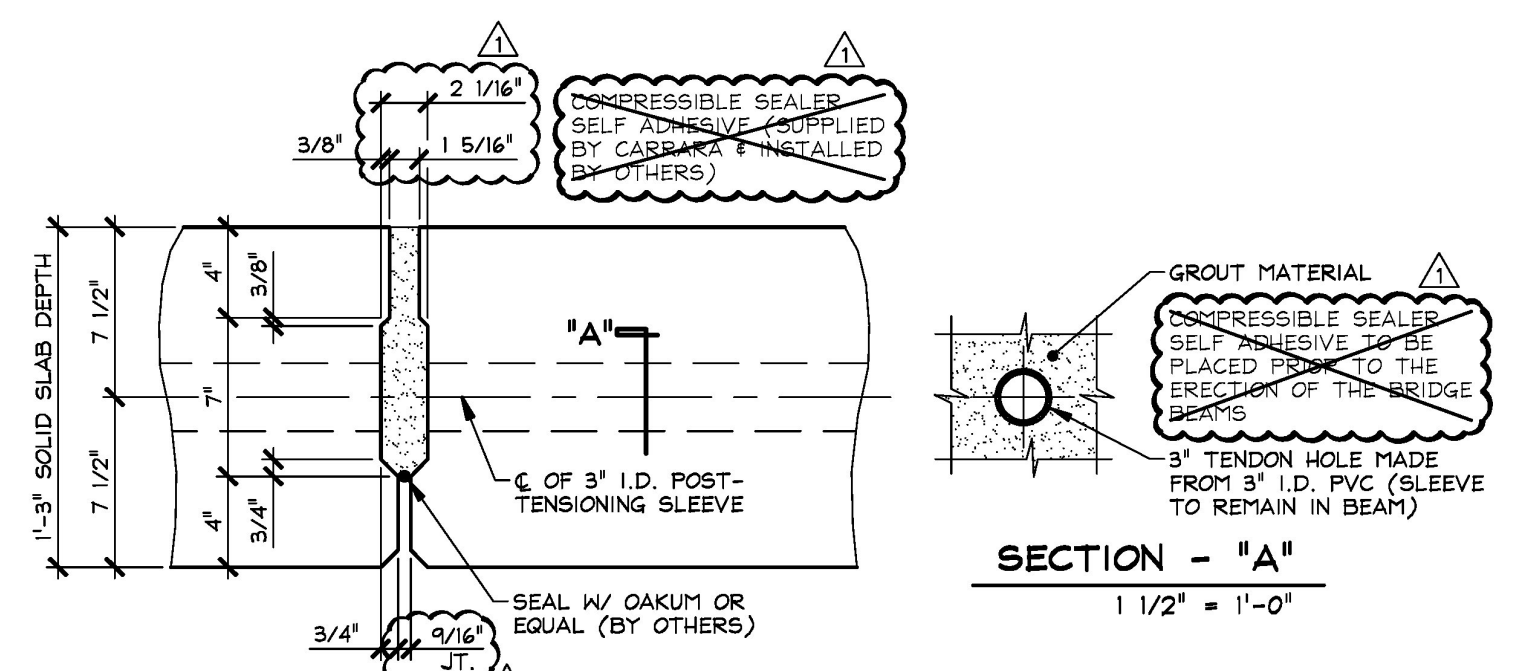
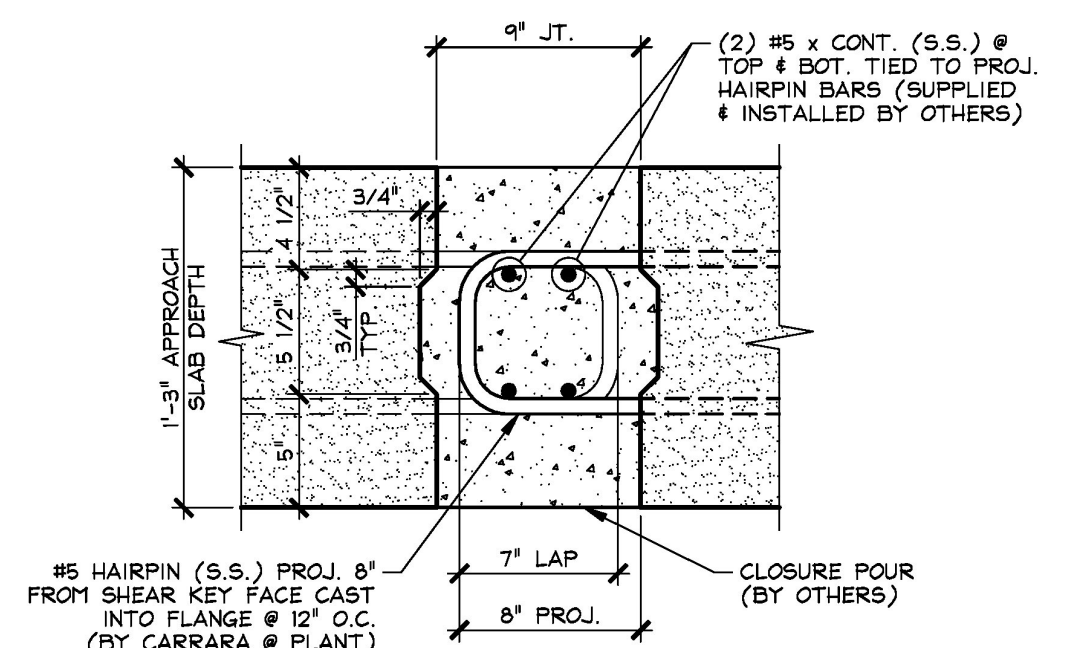


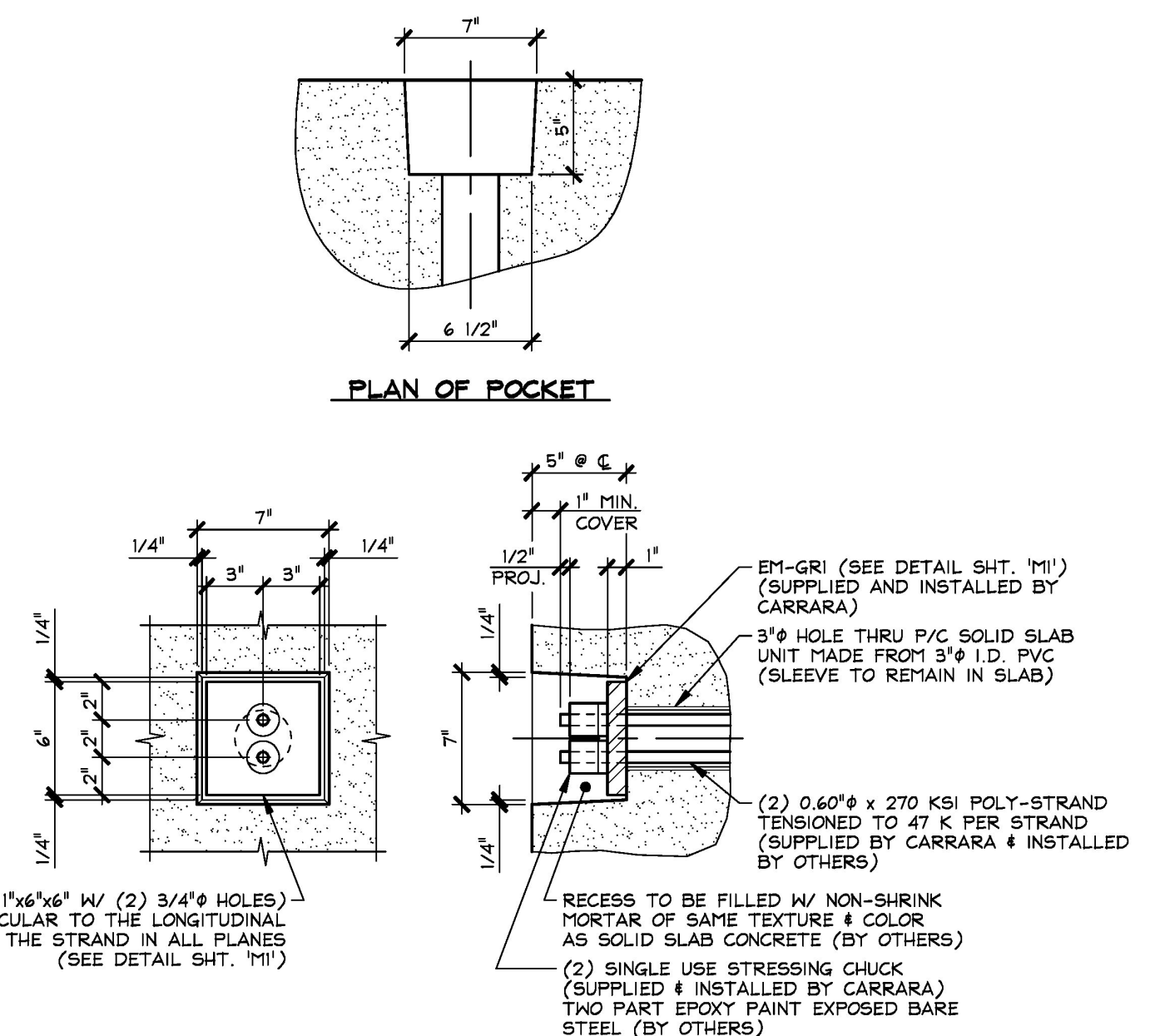
A BEARING SECTION
F4 3/4" = 1'-0"



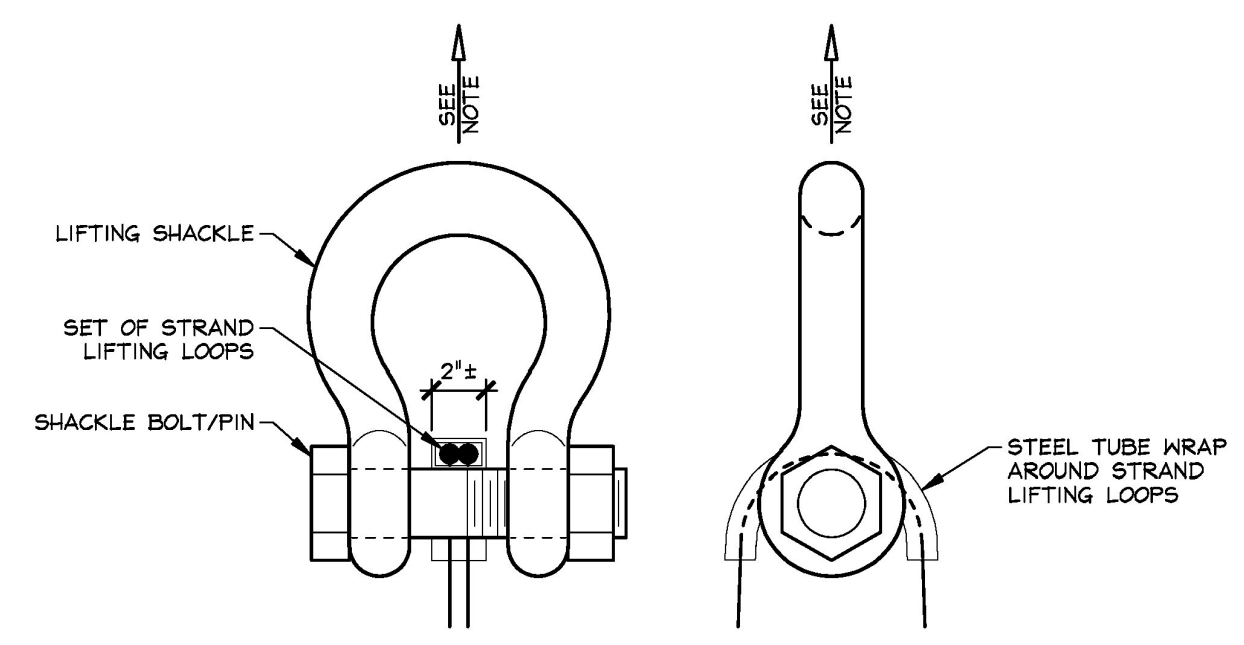
B SHEAR KEY SECTION @ P.T. SLEEVE
F4 1/2" = 1'-0"



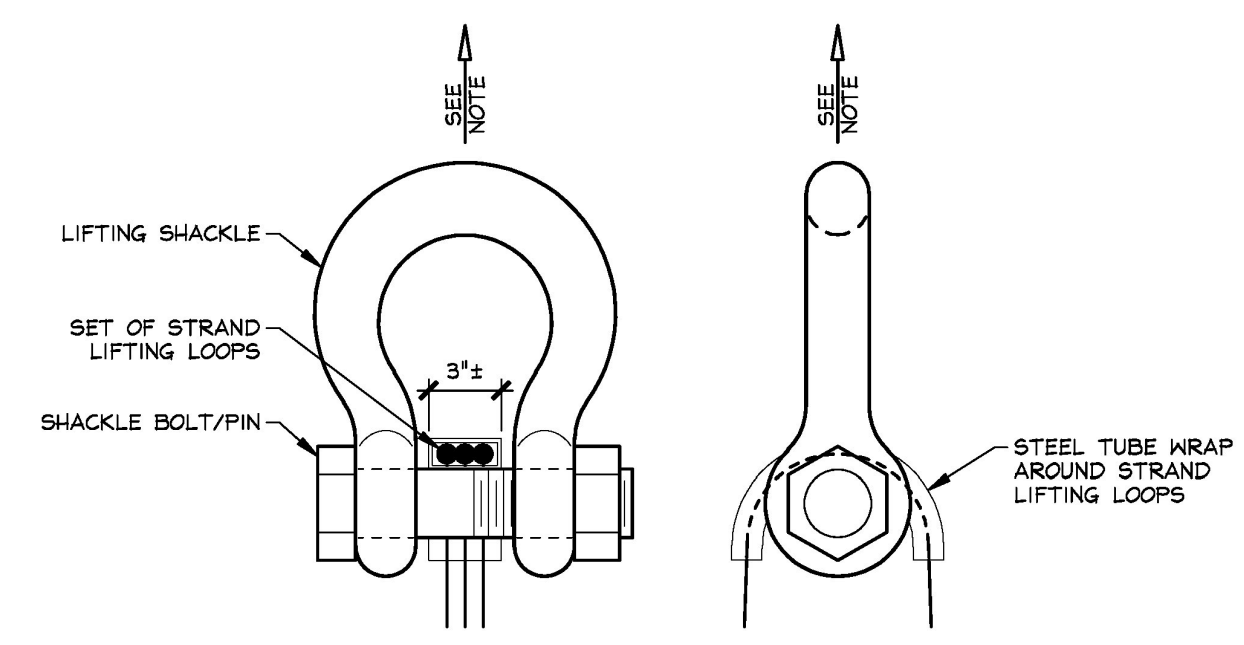
C SHEAR KEY SECTION @ APPROACH SLABS
F4 1/2" = 1'-0"



FASCIA ELEVATION SECTION AT CENTERLINE
DETAIL - "A"
 1/2" = 1'-0"



LIFTING SHACKLE DETAILS
 PRESTRESSED SOLID SLABS N.T.S.



LIFTING SHACKLE DETAILS
 PRECAST ABUTMENTS N.T.S.

NOTE: PRESTRESSED SOLID SLABS SHALL BE HANDLED AND ERECTED USING THE LIFTING LOOPS ONLY. RIGGING SHALL BE CONFIGURED SUCH THAT EQUAL FORCES ARE APPLIED TO EACH SET OF LIFTING LOOPS AT EACH END EACH SLAB. SHACKLE BOLT/PIN SHALL BE PLACED UNDER LIFT LOOPS AS SHOWN. DESIGN AND CONFIGURATION OF RIGGING BY PURCHASER.

NOTE: PRECAST ABUTMENTS SHALL BE HANDLED AND ERECTED USING THE LIFTING LOOPS ONLY. RIGGING SHALL BE CONFIGURED SUCH THAT EQUAL FORCES ARE APPLIED TO EACH SET OF LIFTING LOOPS AT EACH END EACH ABUTMENT. SHACKLE BOLT/PIN SHALL BE PLACED UNDER LIFT LOOPS AS SHOWN. DESIGN AND CONFIGURATION OF RIGGING BY PURCHASER.

T.Y. LIN INTERNATIONAL
 THE STAMPED DOCUMENTS ARE HEREBY:
 _____ APPROVED
 _____ APPROVED AS NOTED
 _____ REVISE AND RESUBMIT
 SEE TRANSMITTAL FOR ADDITIONAL INFORMATION AS APPLICABLE.
 THIS REVIEW IS FOR GENERAL CONFORMANCE WITH DESIGN CONCEPT ONLY. ANY DEVIATION FROM THE PLANS OR SPECIFICATIONS NOT CLEARLY NOTED BY THE CONTRACTOR HAS NOT BEEN REVIEWED. REVIEW BY THE ENGINEER SHALL NOT RELIEVE THE CONTRACTOR OF THE CONTRACTUAL RESPONSIBILITY FOR ANY ERRORS OR DEVIATION FROM THE CONTRACT REQUIREMENTS.
 _____ REVIEWER JOSH OLUND January 25, 2017
 _____ DATE

1-3-17 REVISED AS NOTED

APPROVAL STAMP:	J.P. CARRARA & SONS INC. Precast & Prestress Manufacturer 244 GAGE ST., WOODBURY, VERMONT 05753 Phone: (802)388-6361 Fax: (802)388-9010	J.P. SICARD, INC. CONTRACTOR BARTON, VERMONT
Vermont Agency of Transportation RECEIVED CK'D BY T.Y. Lin International OK'D BY J. Olund January 24, 2017 RESUBMIT No Approved BY D. Bonneau DATE 01/25/17	STATE OF VERMONT AGENCY OF TRANSPORTATION COUNTY OF ORLEANS VILLAGE OF BARTON TH 2 (GLOVER ROAD), RURAL MAJOR COLLECTOR BRIDGE NO.: 20 PROJECT NO.: BHF 0286(5)	DATE: NOV. 18, 2016 SCALE: NOTED CHKD: A.S. DFTM: B.L. JOB NO: 2349B-016 DWG. NO: F4 GLOVER ROAD
	SECTIONS & DETAILS	

F:\VT-Budget\2349B-16 BartonGlover Road\Glover-F4.dwg, 1/23/2017 4:28:40 PM