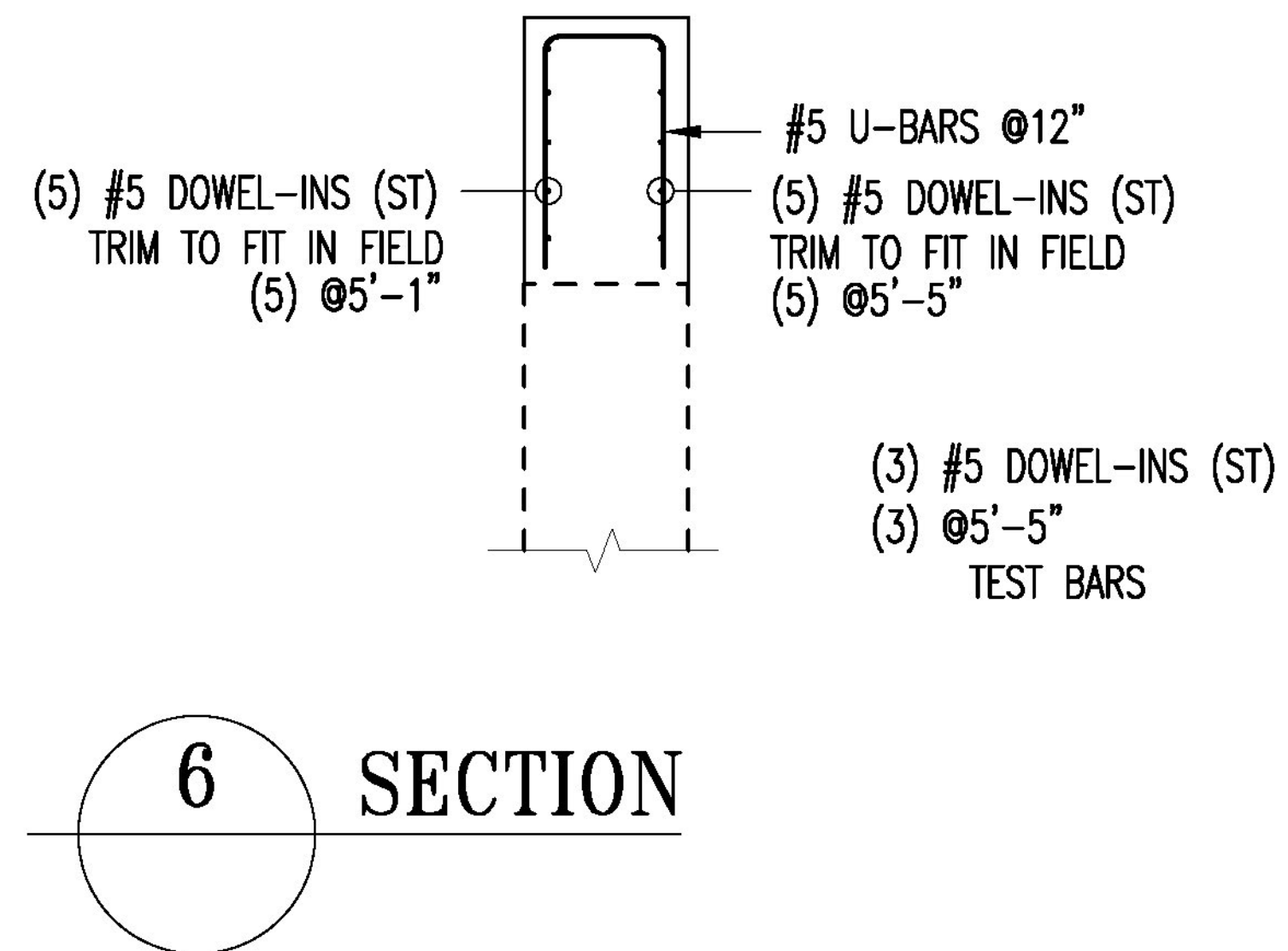
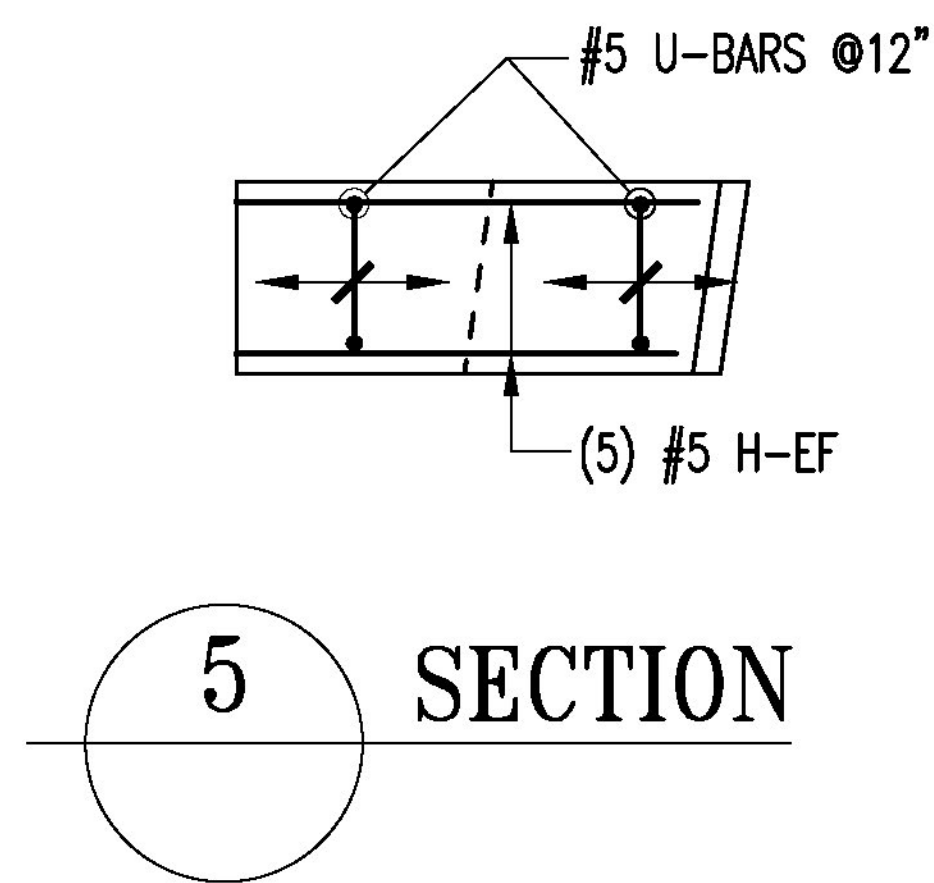
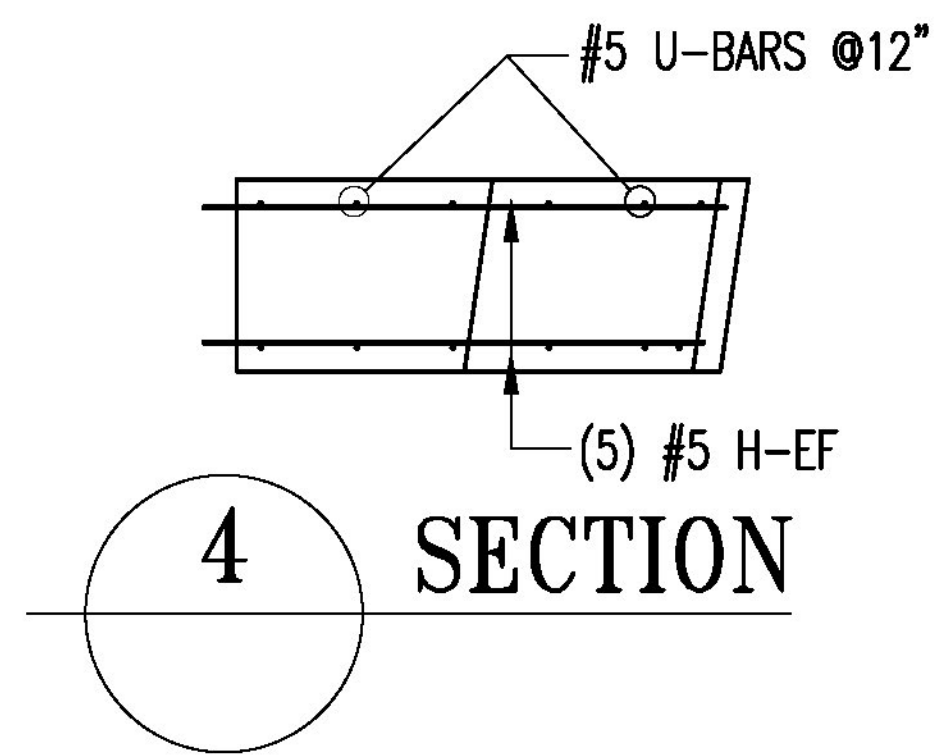


## EAST RAIL REINFORCEMENT ELEVATION

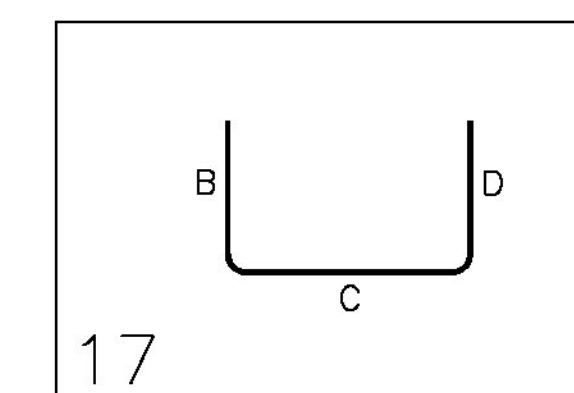
LOOKING EAST



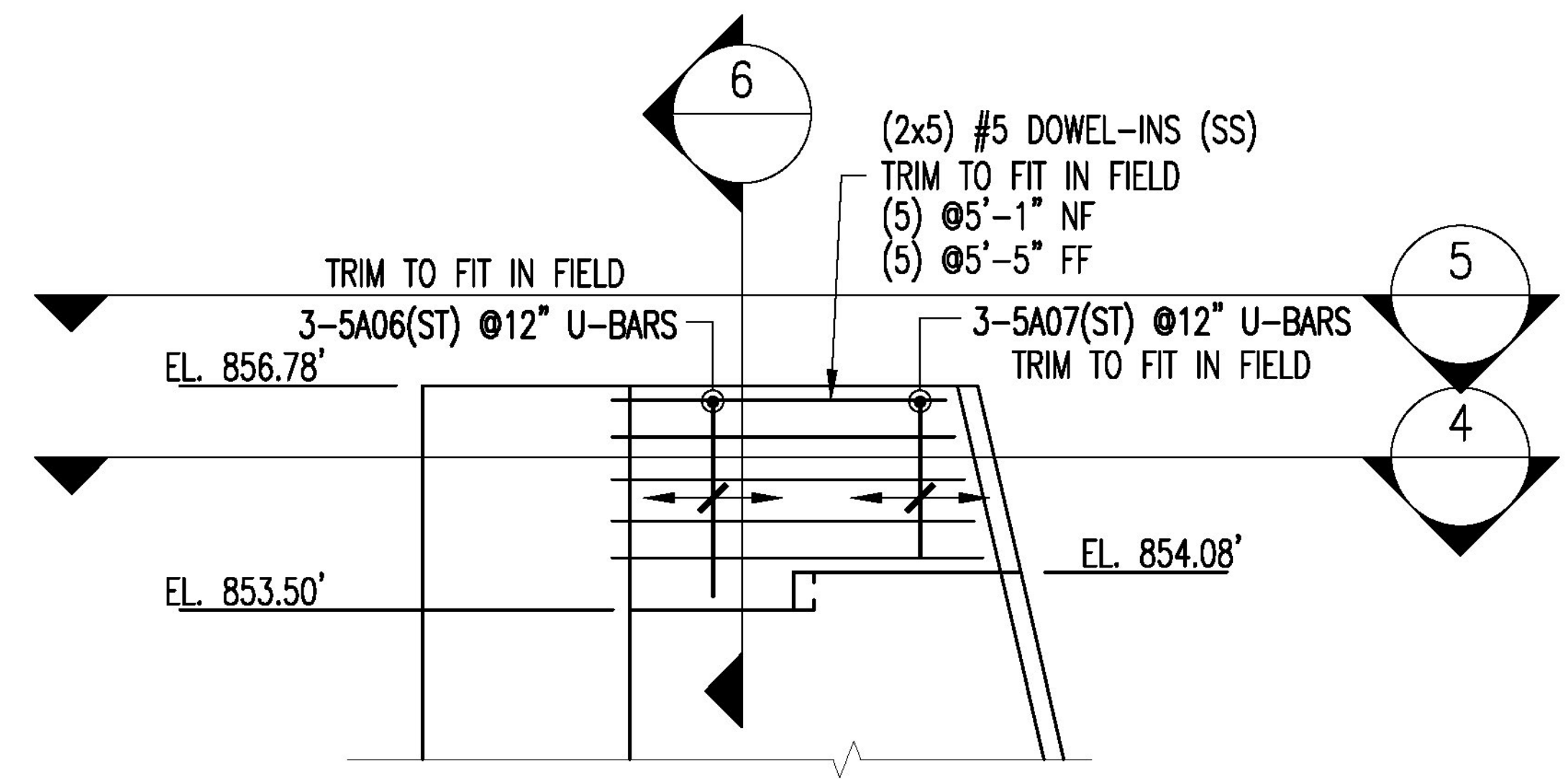
Drawing Sheet : R01

Bar Mark	Qty	Size	Total Length	Type	'A'	'B'	'C'	'D'	'E'	'F'	'G'	'H'	'J'	'K'
4A01	16	#4	7'-9 1/2"	17		3'-8 1/2"	4 1/2"	3'-8 1/2"						
4A03	4	#4	7'-1"	17		3'-3"	7"	3'-3"						
4A02	12	#4	8'-0"	17		3'-8 1/2"	7"	3'-8 1/2"						
5A06	3	#5	7'-2"	17		2'-10"	1'-6"	2'-10"						
5A07	3	#5	6'-0"	17		2'-3"	1'-6"	2'-3"						

4-1/2" IS A MINIMUM BEND FOR A #4 BAR



ALL MATERIAL ON THIS DRAWING SHALL BE GR 2304 STAINLESS STEEL BAR (ST) U.N.C.



## WINGWALL 2 RECAP REINFORCEMENT

Vermont Agency of Transportation

RECEIVED

CK'D BY T.Y. LIN International OK'D BY

January 27, 2017

RESUBMIT No Approved

BY D Bonneau DATE 02

T.Y. LIN INTERNATIONAL

THE STAMPED DOCUMENTS ARE HEREBY

- APPROVED
- APPROVED AS NOTED
- REVISE AND RESUBMIT

SEE TRANSMITTAL FOR ADDITIONAL INFORMATION

THIS REVIEW IS FOR GENERAL CONFORMANCE WITH THE CONCEPT ONLY. ANY DEVIATION FROM THE PLANS OR SPECIFICATIONS NOT CLEARLY NOTED BY THE CONTRACTOR HAS NOT BEEN REVIEWED. REVIEW BY THE ENGINEER DOES NOT RELIEVE THE CONTRACTOR OF THE CONTRACTUAL OBLIGATIONS FOR ANY ERRORS OR DEVIATION FROM THE CONTRACT REQUIREMENTS.

JOSH OLUND  
REVIEWER

Jan