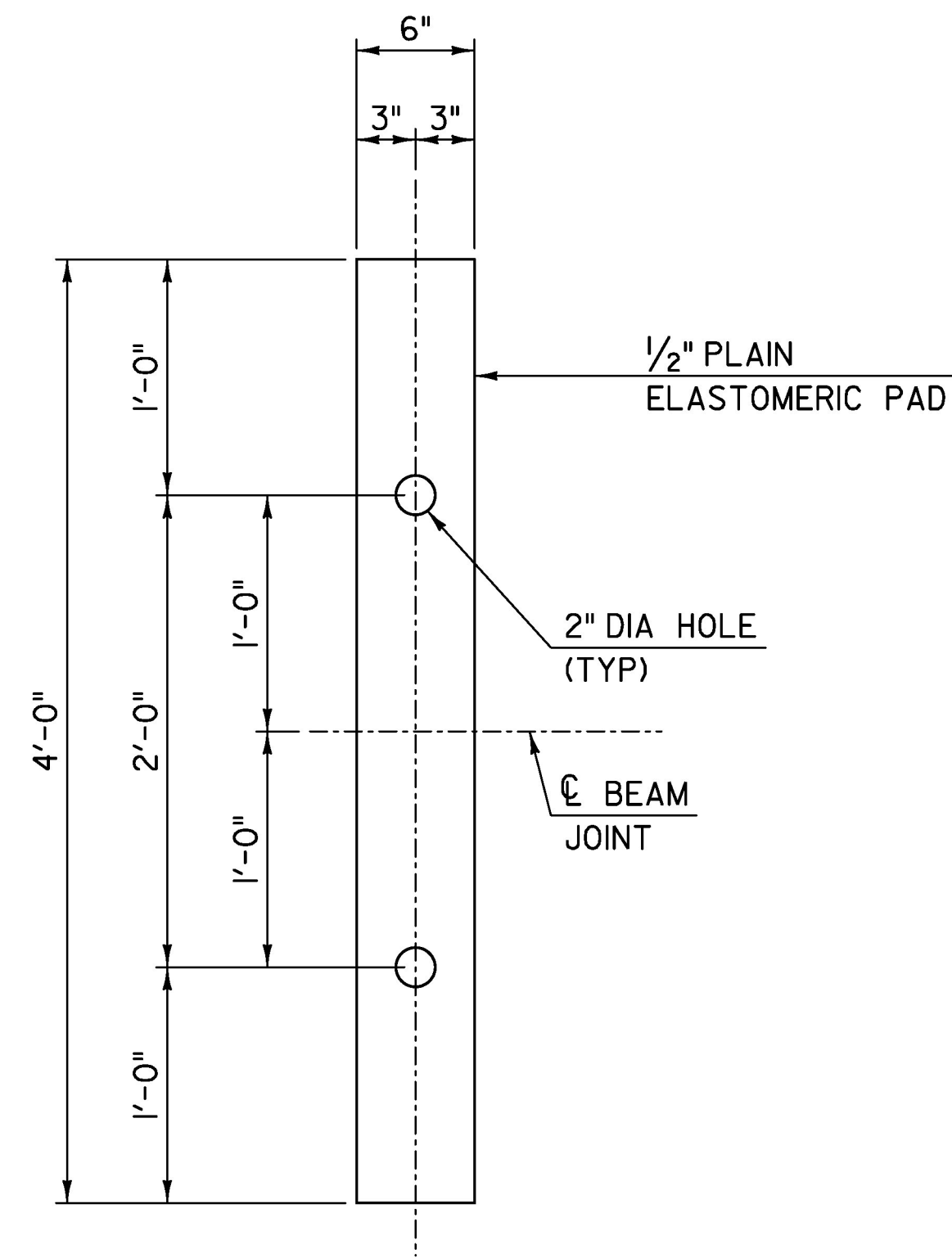
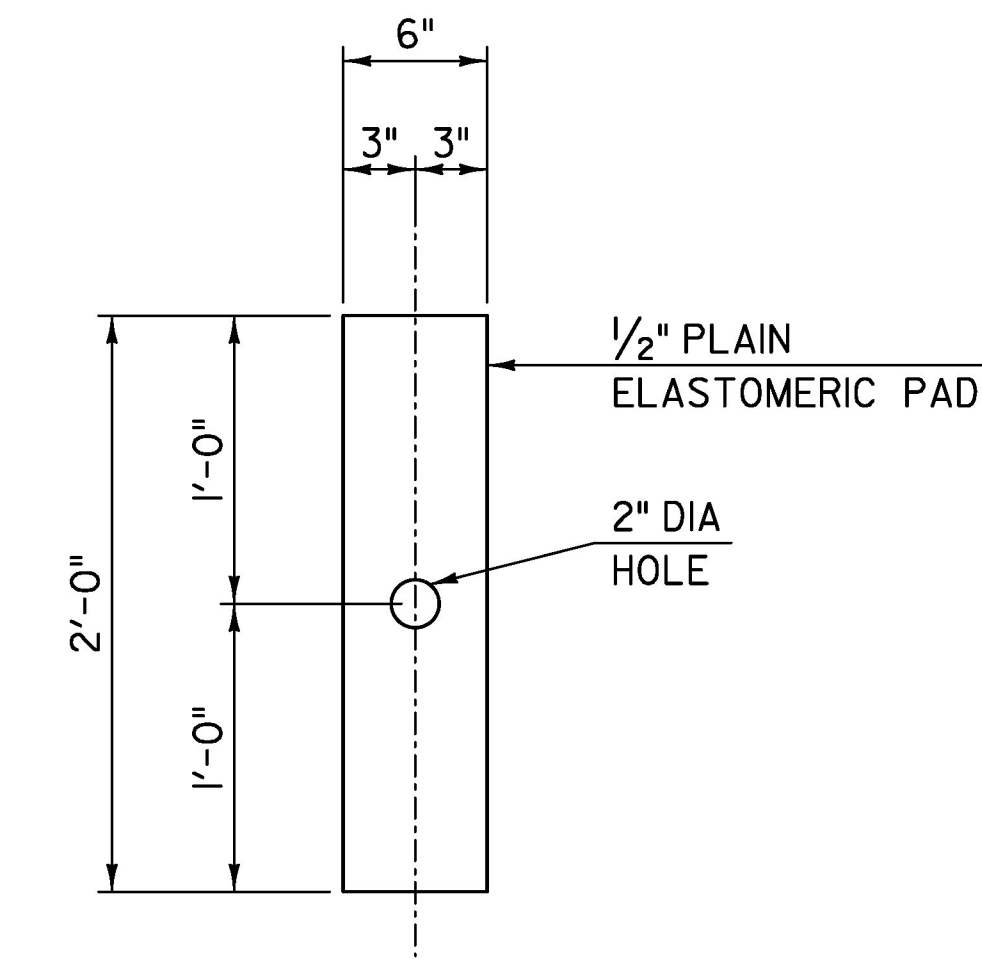


**BEARING LAYOUT**  
SCALE: 1/2" = 1'-0"



**INTERIOR BEARING DETAIL**  
SCALE: 1/2" = 1'-0"  
(7 REQUIRED PER ABUTMENT)



**EXTERIOR BEARING DETAIL**  
SCALE: 1/2" = 1'-0"  
(2 REQUIRED PER ABUTMENT)

**NOTES:**

1. BEARINGS SHALL CONFORM TO THE APPLICABLE SUBSECTIONS OF SECTIONS 531 AND 731. PAYMENT WILL BE MADE UNDER ITEM 531.16, "BEARING DEVICE ASSEMBLY, PLAIN ELASTOMERIC PAD."
2. THE PLAIN ELASTOMERIC BEARING PADS WERE DESIGNED WITH A SHEAR MODULUS OF 110 PSI +/- 15%.

|                            |                              |                      |
|----------------------------|------------------------------|----------------------|
| <b>TYLIN</b> INTERNATIONAL | PROJECT NAME: BARTON VILLAGE | PLOT DATE: 7/26/2016 |
|                            | PROJECT NUMBER: BHF 0286(5)  | DRAWN BY: S. MORGAN  |
|                            | FILE NAME: z12j172sup3.dgn   | CHECKED BY: J. OLUND |
|                            | DESIGNED BY: B. TOOTHAKER    | SHEET 88 OF 110      |
|                            | BEARING DETAILS              |                      |