

GPS CONTROL POINTS

HVCTRL #1
 ASHTON AZ MK
 NORTH = 814450.530
 EAST = 1722647.960
 ELEV. = 894.620

BARTON, VT. AT THE DISTRICT 9 BARTON GARAGE IN THE LAWN AREA NORTHEAST OF THE FUEL PUMP AND NORTHWEST OF THE GARAGE OFFICE. IT IS 29.8 M N OF THE WEST CORNER OF THE GARAGE, 20.4 M NW OF THE NORTH CORNER OF THE GARAGE, 24.9 M W OF A 10 CM DIAMETER VERTICAL METAL PIPE, 23.3 M NNE OF THE NORTH CORNER OF THE CONCRETE FUEL PUMP ISLAND BASE, 29.5 M E OF POLE NO 1, 20.4 M SW OF A R-O-W FENCE, AND 6.6 M SW OF A FIBERGLASS WITNESS AT AN ELECTRICAL RISER.

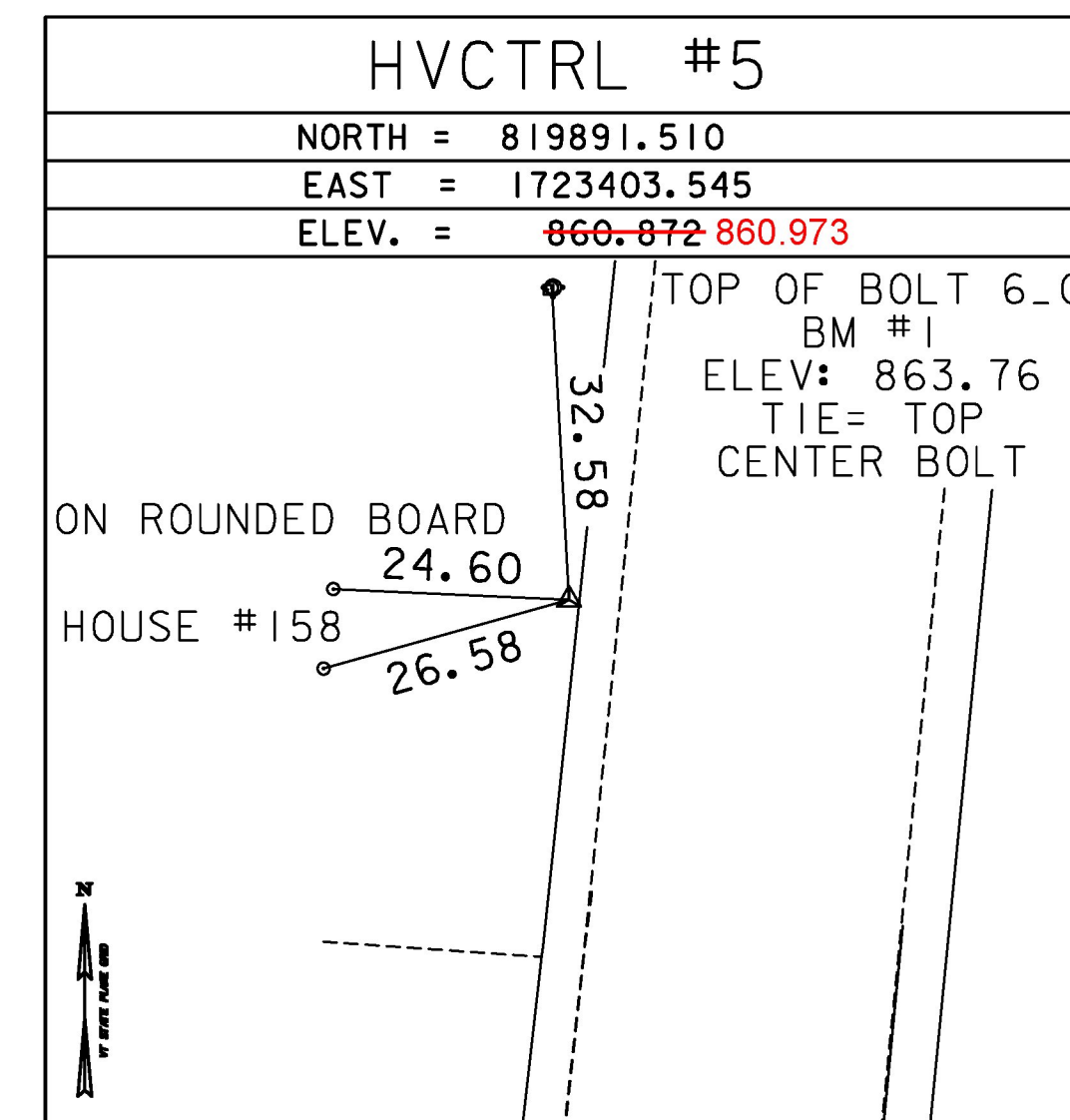
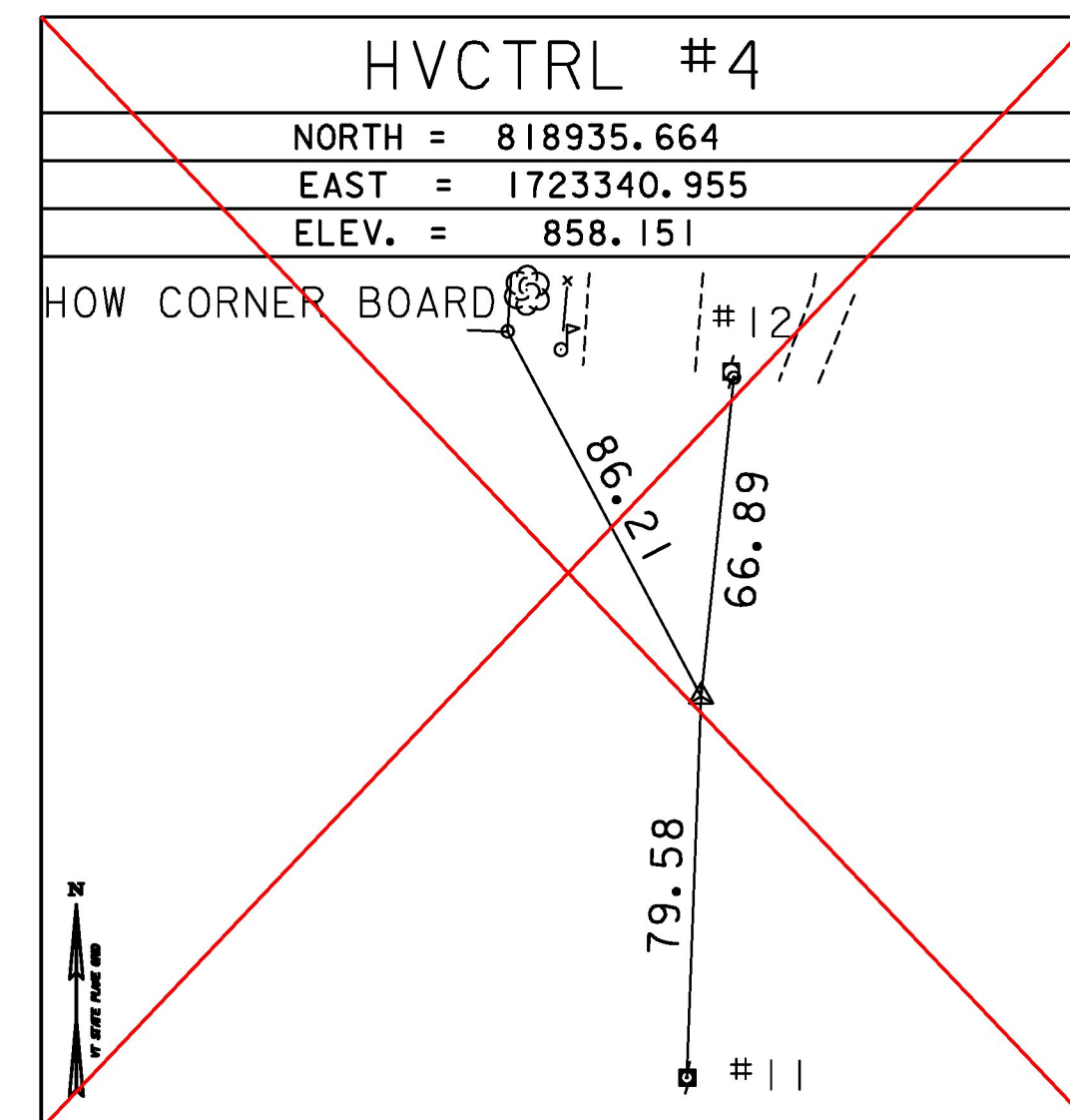
HVCTRL #2
 A06024
 NORTH = 817121.810
 EAST = 1723280.340
 ELEV. = 865.150

BARTON VT. ABOUT 120 M (393.7 FT) SOUTH OF THE VT ROUTE 16 INTERSECTION WITH ROARING BROOK ROAD, 10.9 M (35.8 FT) EAST OF AND ABOUT 1.0 M (3.3 FT) HIGHER THAN THE CL OF VT ROUTE 16, 39.6 M (129.9 FT) SOUTH OF POLE NO B/8/01, 24.6 M (80.7 FT) SOUTH SOUTHWEST OF THE MOST WESTERLY OF TWO POSTS FOR A WELCOME TO BARTON SIGN, 51.2 M (168.0 FT) NORTH OF THE NORTHWEST CORNER OF HOUSE NO 527, AND 1.5 M (4.9 FT) SOUTH OF A BARBED WIRE FENCE CORNER. NOTE, MARK IS INTERVISIBLE WITH MARK ASHTON AZIMUTH MK.

TRAVERSE TIES

HVCTRL #3	
NORTH = 817902.734	
EAST = 1723218.425	
ELEV. = 856.622	

NOT TIED

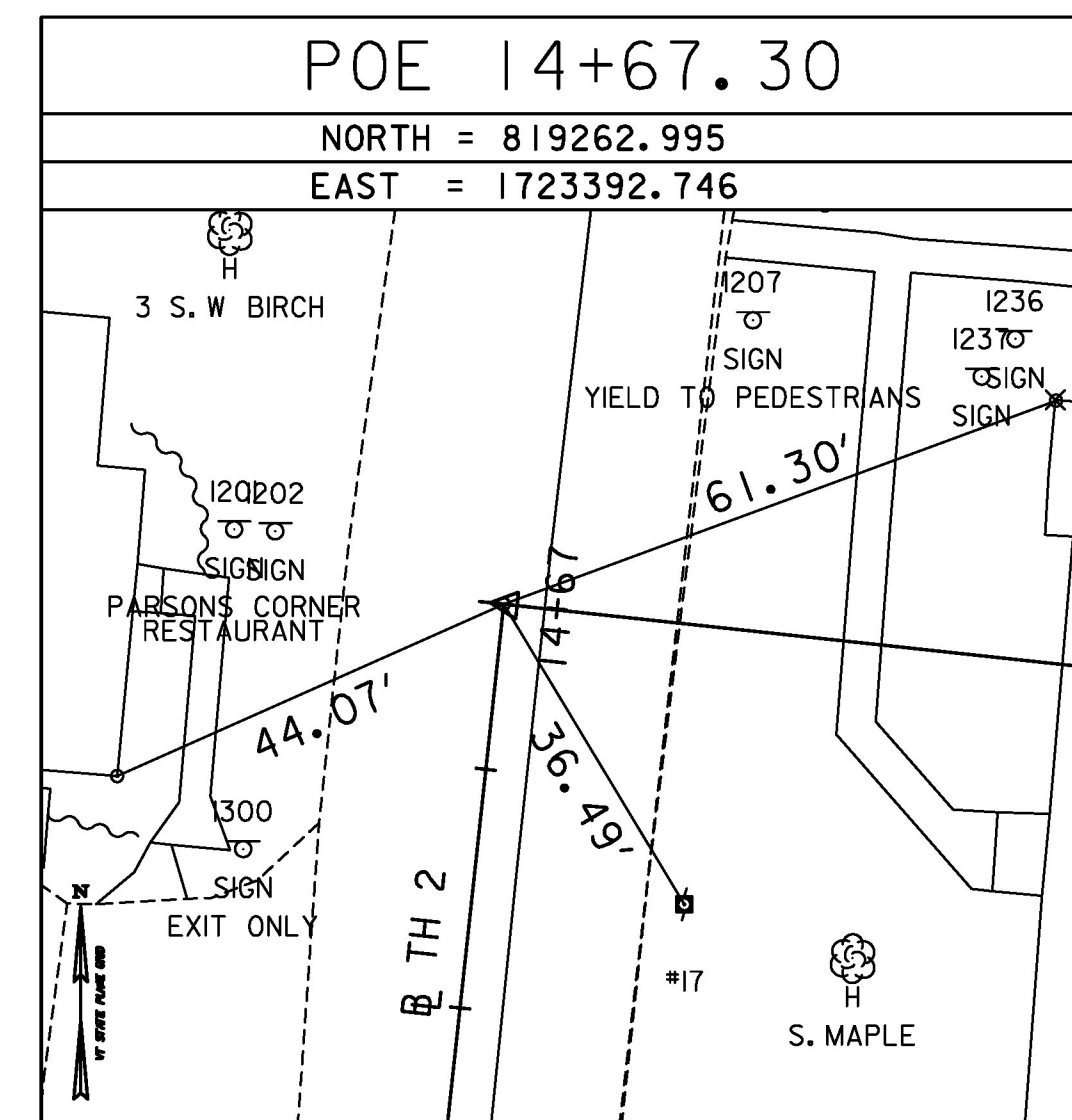
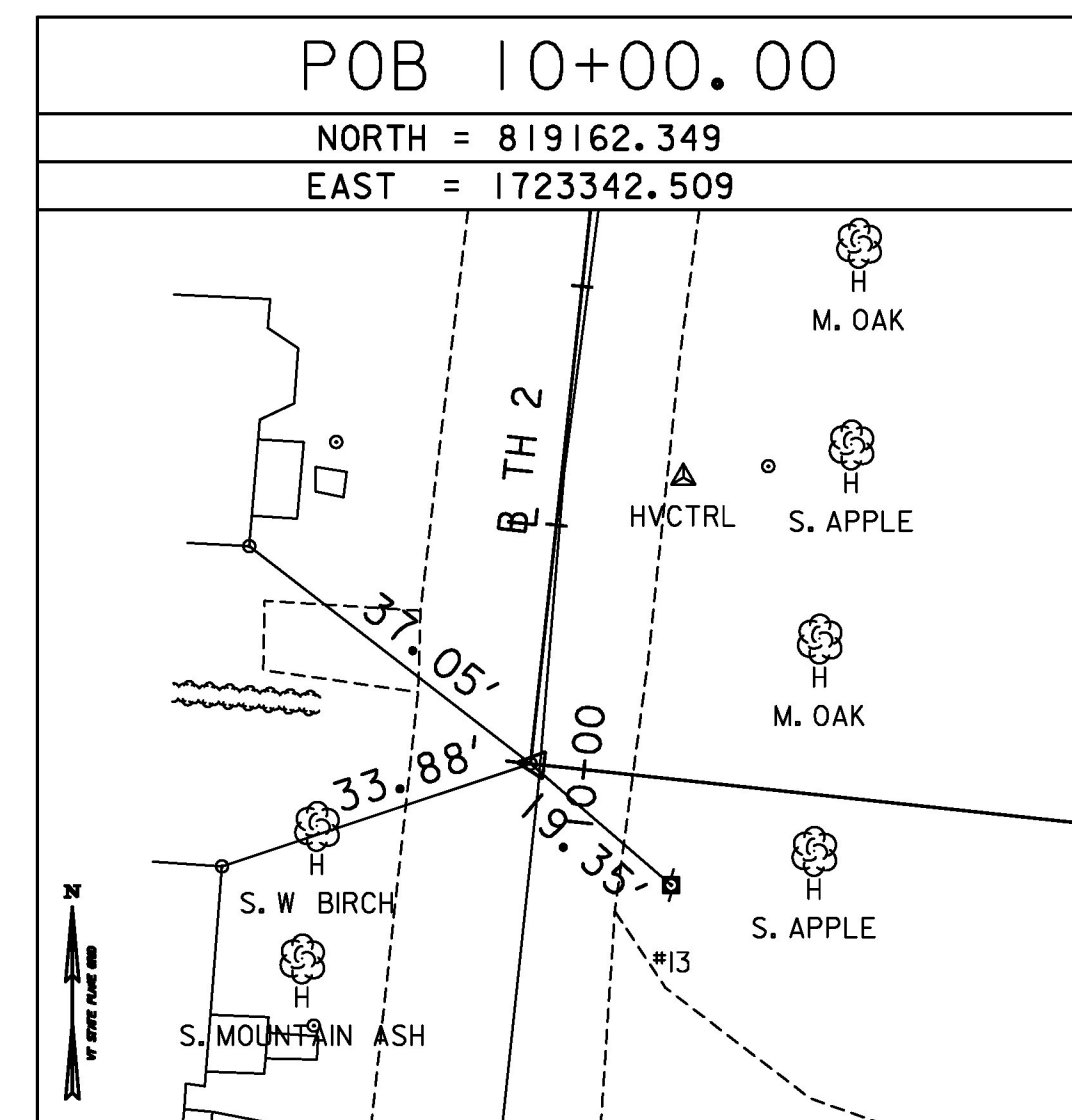


HVCTRL #6	
NORTH = 819576.671	
EAST = 1723409.617	
ELEV. = 854.738	

SET 3/30/17
NOT TIED APPROX. 14+25 16' RT (BY GUY WIRE)

* MAIN TRAVERSE COMPLETED 6/1/2012 BY R. GILMAN P.C. & P. WINTERS & C. CYR

ALIGNMENT TIES



DATUM	
VERTICAL	NAVD 88
HORIZONTAL	NAD 83 (96)
ADJUSTMENT	COMPASS

TYLIN INTERNATIONAL	PROJECT NAME: BARTON VILLAGE	PLOT DATE: 7/26/2016
	PROJECT NUMBER: BHF 0286(5)	DRAWN BY: S. MORGAN
	FILE NAME: z12j172+1.dgn	CHECKED BY: B. TOOTHAKER
	PROJECT LEADER: J. OLUND	SHEET 66 OF 110
	DESIGNED BY: J. HOWE	
	TIE SHEET	