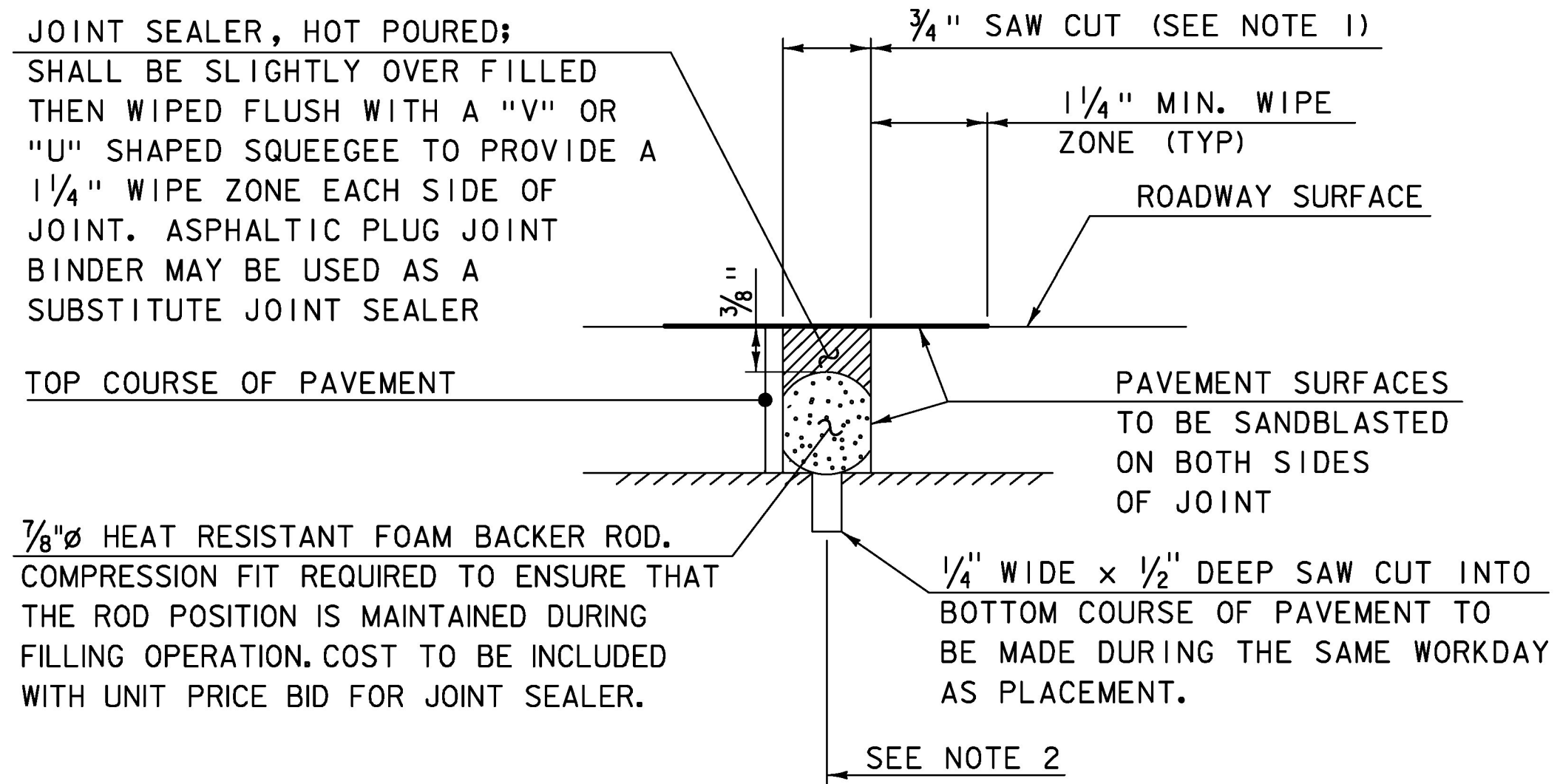


**EXISTING STRUCTURE REMOVAL LIMITS
ABUTMENT NO 1 ELEVATION**

SCALE: 3/8" = 1'-0"

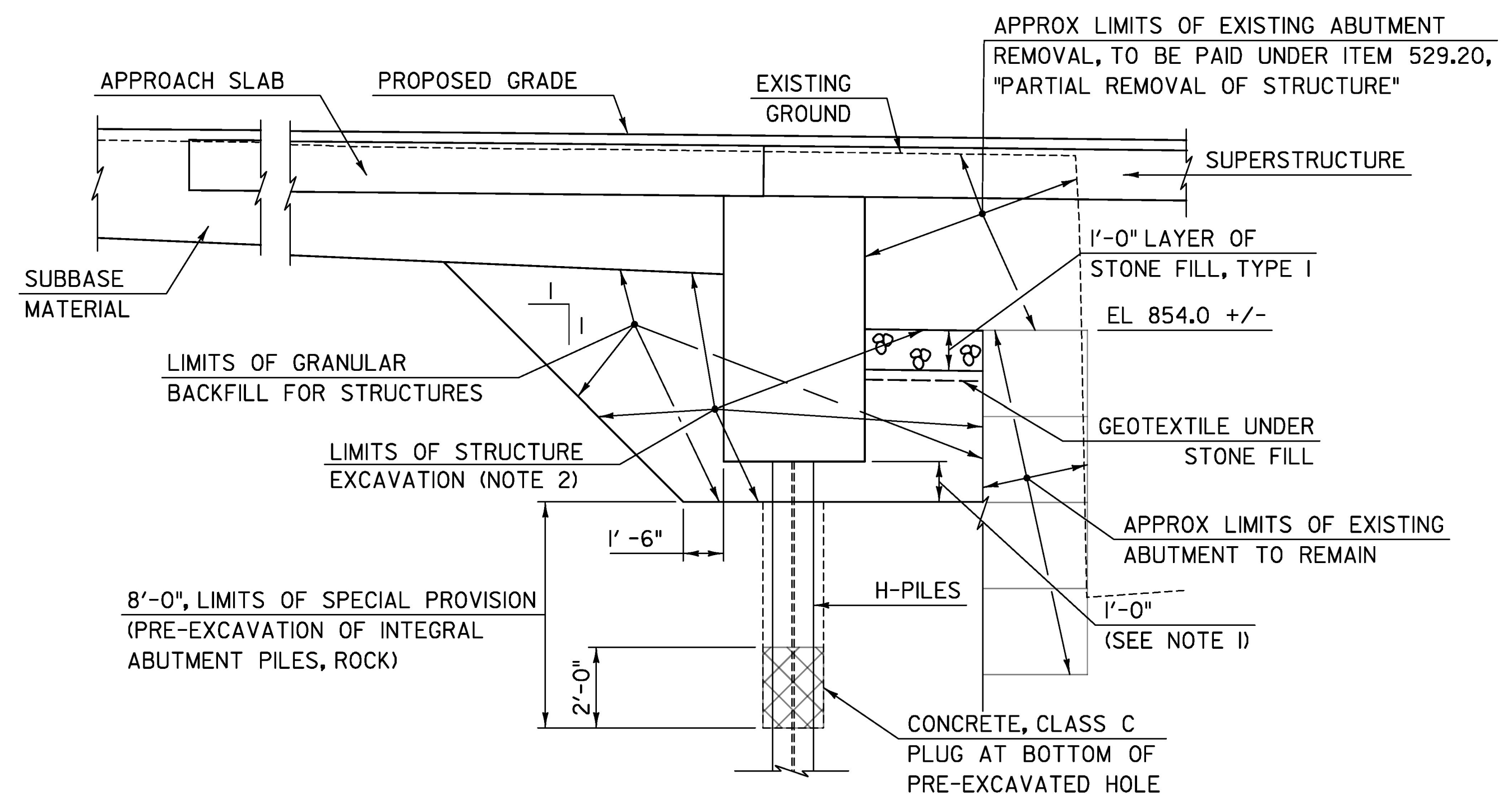
* PAYMENT WILL BE MADE UNDER ITEM 529.20, "PARTIAL REMOVAL OF STRUCTURE."



**ITEM 524.11, "JOINT SEALER, HOT POURED"
SAWED PAVEMENT JOINT DETAIL**

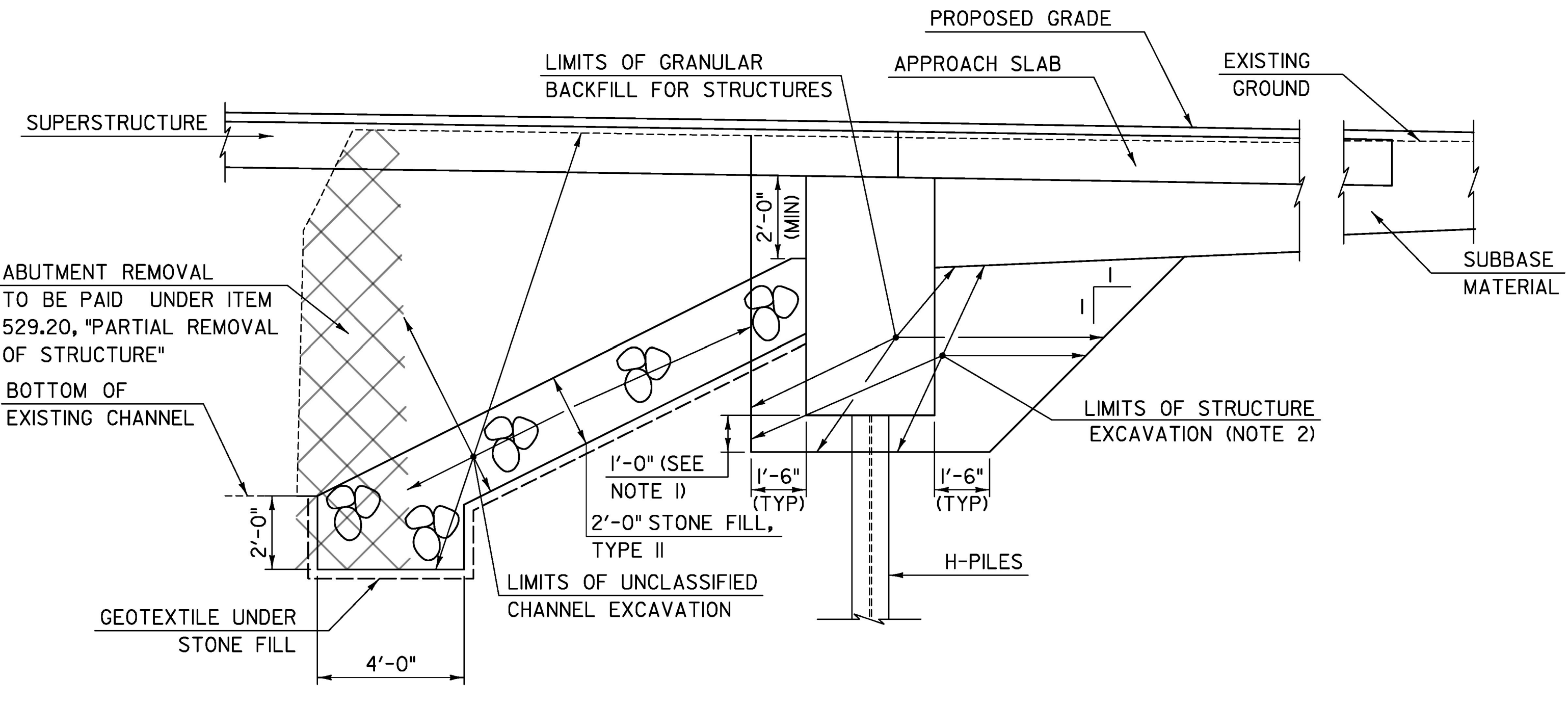
NOT TO SCALE

1. JOINT IS TO BE LOCATED ACCURATELY BY STRING LINING, OR OTHER MEANS, PRIOR TO PAVING, SO THAT THE SAW CUTS WILL BE MADE DIRECTLY OVER THE END OF CONCRETE DECK. JOINT SHALL BE CUT DRY IN A SINGLE PASS AND BE SEALED WITHIN 24 HOURS OR PRIOR TO EXPOSURE TO TRAFFIC. JOINT SHALL BE CLEANED PRIOR TO APPLYING THE JOINT SEALER.
2. SAWED PAVEMENT JOINTS SHALL BE LOCATED BETWEEN THE APPROACH SLABS AND EACH END OF THE BRIDGE AND BETWEEN THE APPROACH SLABS AND ANY PAVED APRONS FOR DRIVES.



EARTHWORK TYPICAL SECTION - ABUTMENT NO 1

NOT TO SCALE



EARTHWORK TYPICAL SECTION - ABUTMENT NO 2

NOT TO SCALE

NOTES:

1. ONE FOOT UNDERCUT AS DETERMINED NECESSARY BY THE ENGINEER.
2. ACTUAL LIMITS OF STRUCTURE EXCAVATION TO BE DETERMINED BY THE CONTRACTOR. HOWEVER, ONLY THE EXCAVATION BETWEEN THE LIMITS SHOWN WILL BE PAID FOR UNDER ITEM 204.25, "STRUCTURE EXCAVATION." EXCAVATION BY THE CONTRACTOR OUTSIDE THESE LIMITS WILL BE AT THE EXPENSE OF THE CONTRACTOR.

TYLIN INTERNATIONAL	PROJECT NAME: BARTON VILLAGE	PLOT DATE: 7/26/2016
	PROJECT NUMBER: BHF 0286(5)	DRAWN BY: S. MORGAN
	FILE NAME: z12j172+yp2.dgn	CHECKED BY: T. POULIN
	DESIGNED BY: J. OLUND	TYPICAL SECTIONS AND DETAILS 2
		SHEET 58 OF 110