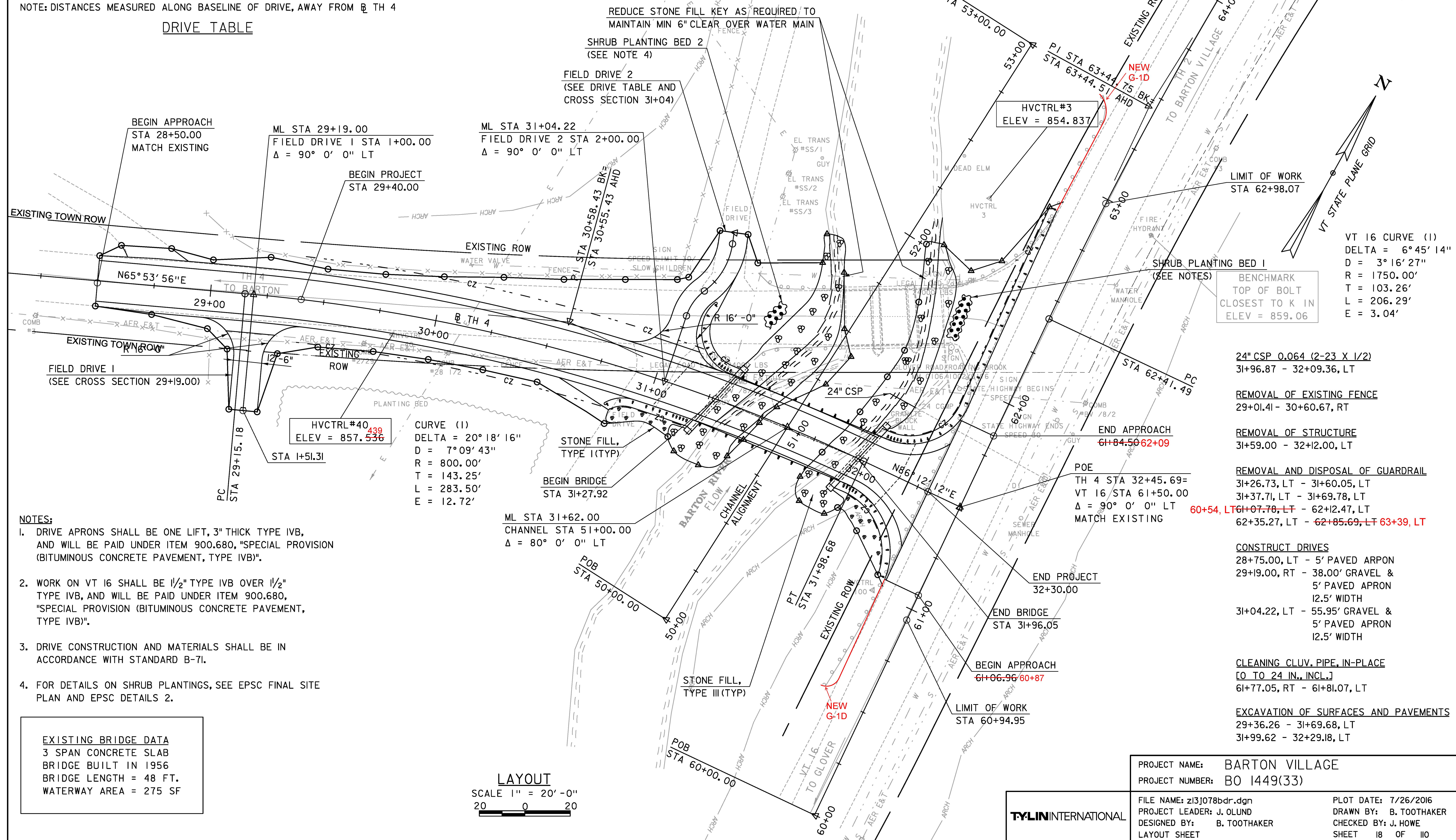


FIELD DRIVE NUMBER	CURVE 1	CURVE 2	POE	WIDTH
2	PC = 2+30.28 PRC = 2+44.01 R = 22.25'	PC = 2+44.01 PT = 2+68.79 R = 31.25'	2+73.81	12.50'

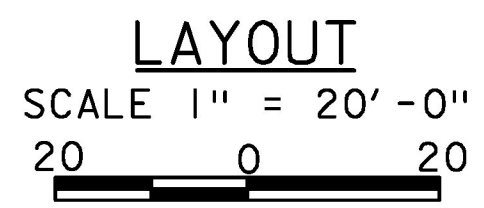
NOTE: DISTANCES MEASURED ALONG BASELINE OF DRIVE, AWAY FROM TH 4

DRIVE TABLE



- NOTES:**
- DRIVE APRONS SHALL BE ONE LIFT, 3" THICK TYPE IVB, AND WILL BE PAID UNDER ITEM 900.680, "SPECIAL PROVISION (BITUMINOUS CONCRETE PAVEMENT, TYPE IVB)".
 - WORK ON VT 16 SHALL BE 1/2" TYPE IVB OVER 1/2" TYPE IVB, AND WILL BE PAID UNDER ITEM 900.680, "SPECIAL PROVISION (BITUMINOUS CONCRETE PAVEMENT, TYPE IVB)".
 - DRIVE CONSTRUCTION AND MATERIALS SHALL BE IN ACCORDANCE WITH STANDARD B-71.
 - FOR DETAILS ON SHRUB PLANTINGS, SEE EPSC FINAL SITE PLAN AND EPSC DETAILS 2.

EXISTING BRIDGE DATA
 3 SPAN CONCRETE SLAB
 BRIDGE BUILT IN 1956
 BRIDGE LENGTH = 48 FT.
 WATERWAY AREA = 275 SF



VT 16 CURVE (1)
 DELTA = 6° 45' 14"
 D = 3° 16' 27"
 R = 1750.00'
 T = 103.26'
 L = 206.29'
 E = 3.04'

- 24" CSP 0.064 (2-23 X 1/2)
31+96.87 - 32+09.36, LT
- REMOVAL OF EXISTING FENCE
29+01.41 - 30+60.67, RT
- REMOVAL OF STRUCTURE
31+59.00 - 32+12.00, LT
- REMOVAL AND DISPOSAL OF GUARDRAIL
31+26.73, LT - 31+60.05, LT
31+37.71, LT - 31+69.78, LT
60+54, LT 61+07.78, LT - 62+12.47, LT
62+35.27, LT - 62+85.69, LT 63+39, LT
- CONSTRUCT DRIVES
28+75.00, LT - 5' PAVED ARPON
29+19.00, RT - 38.00' GRAVEL & 5' PAVED APRON 12.5' WIDTH
31+04.22, LT - 55.95' GRAVEL & 5' PAVED APRON 12.5' WIDTH
- CLEANING CLUV. PIPE, IN-PLACE [O TO 24 IN., INCL.]
61+77.05, RT - 61+81.07, LT
- EXCAVATION OF SURFACES AND PAVEMENTS
29+36.26 - 31+69.68, LT
31+99.62 - 32+29.18, LT

PROJECT NAME:	BARTON VILLAGE
PROJECT NUMBER:	BO 1449(33)
FILE NAME:	z13j078bdr.dgn
PROJECT LEADER:	J. OLUND
DESIGNED BY:	B. TOOTHAKER
LAYOUT SHEET	
PLOT DATE:	7/26/2016
DRAWN BY:	B. TOOTHAKER
CHECKED BY:	J. HOWE
SHEET	18 OF 110

