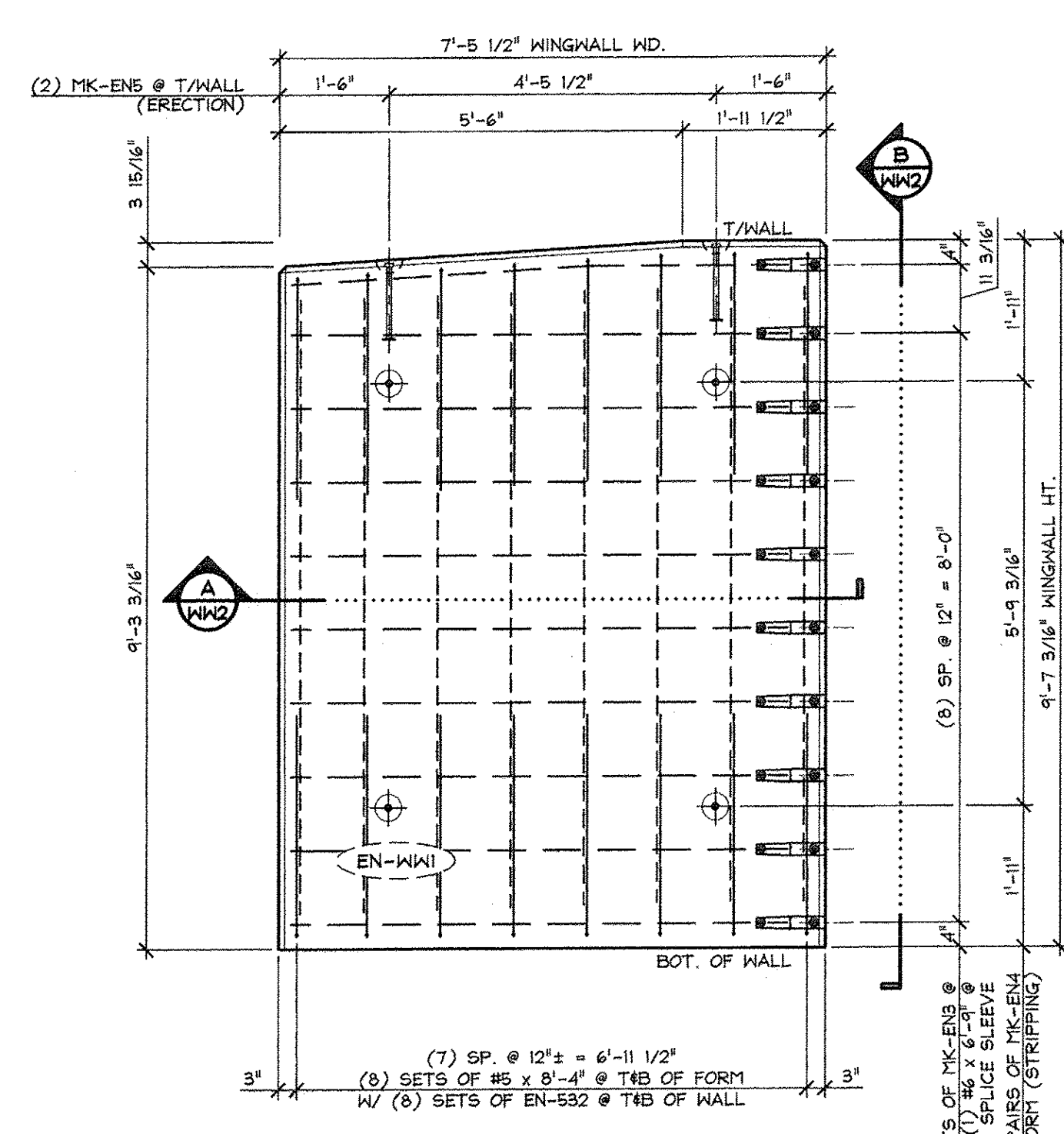
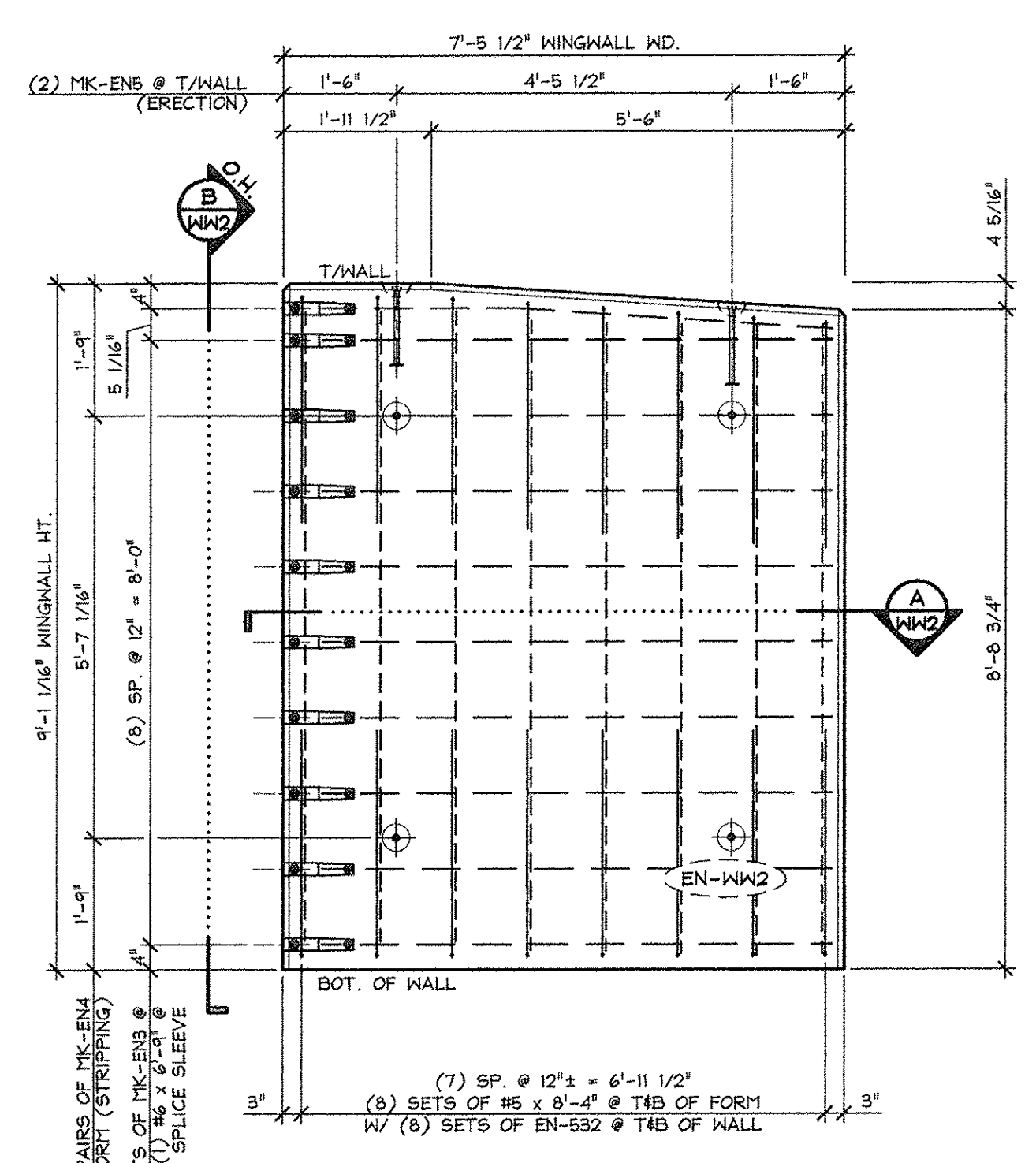


Vermont Agency of Transportation
RECEIVED
 ON: April 9, 2014
 and Checked for
CONFORMANCE
 BY: Rob Young DATE: 04/14/2014

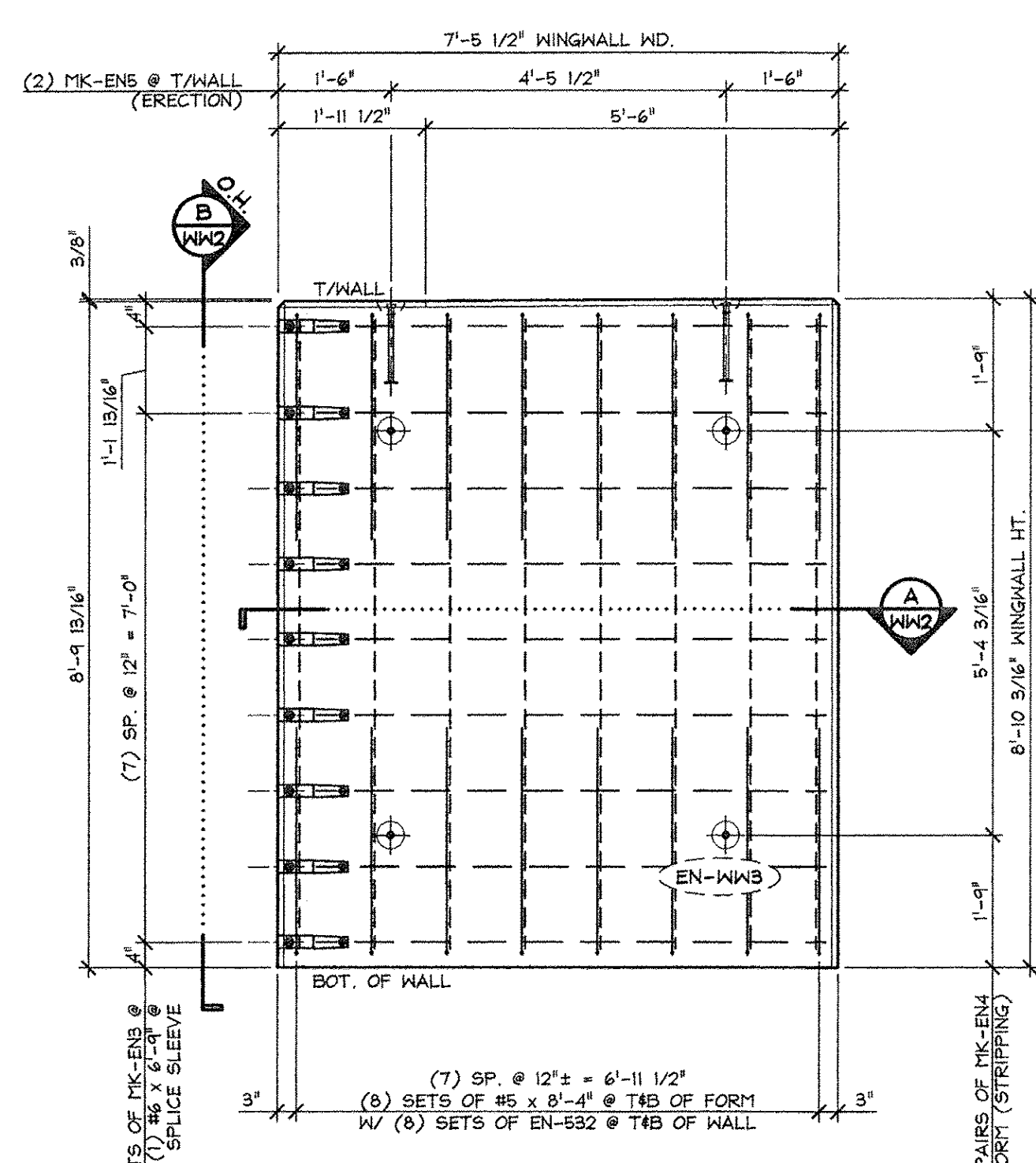
APPROVED: Approval of drawings and/or procedures indicates concurrence with the information presented and does not relieve the Contractor or Fabricator of compliance with all specifications and code requirements	X	Stantec
APPROVED AS NOTED		
REVISE AND RESUBMIT		
NOT REVIEWED		
Date:	4-11-2014	
By:	<i>James H. [Signature]</i>	
This review by Stantec Consulting Services Inc. is for the sole purpose of ascertaining conformance with the general design concept. This review shall not mean that Stantec Consulting Services Inc approves the detail design inherent in the shop drawings, responsibility for which shall remain with the Contractor. Submitting same, and such review shall not relieve the Contractor of his responsibility for errors or omissions in the shop drawing or of his responsibility for meeting all requirements of the Contract Documents. The contractor is responsible for dimensions to be confirmed and correlated at the job site, for information that pertains solely to the fabrication processes or to techniques of construction and installation and for coordination of the work of all subtrades.		



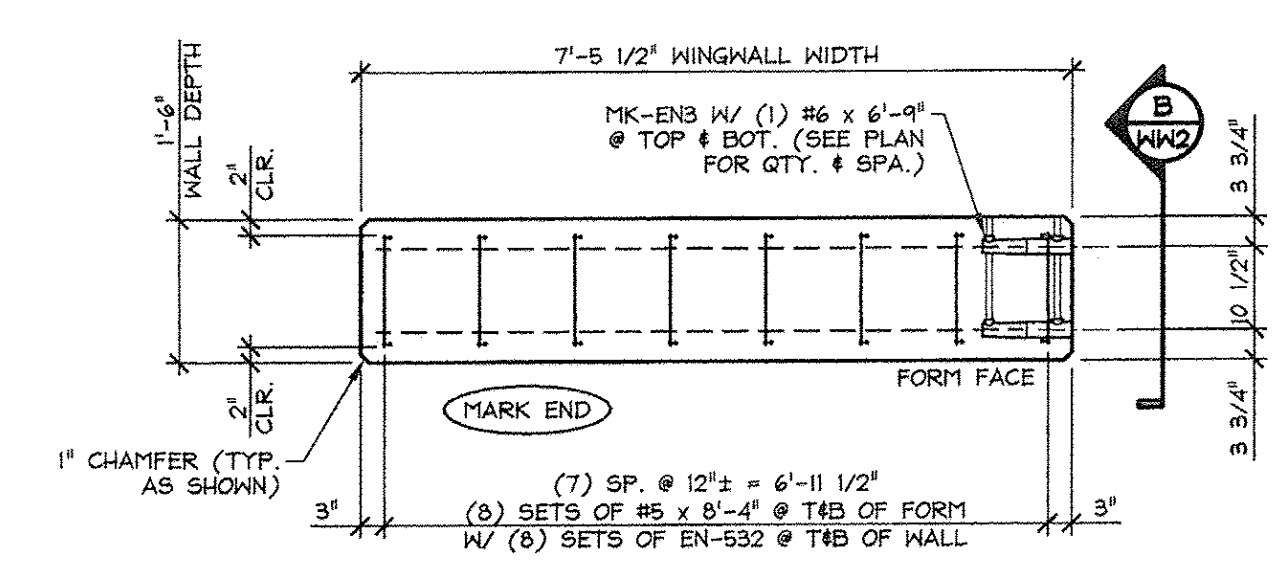
1 PLAN VIEW IN FORM
 WW2 1/2" = 1'-0"



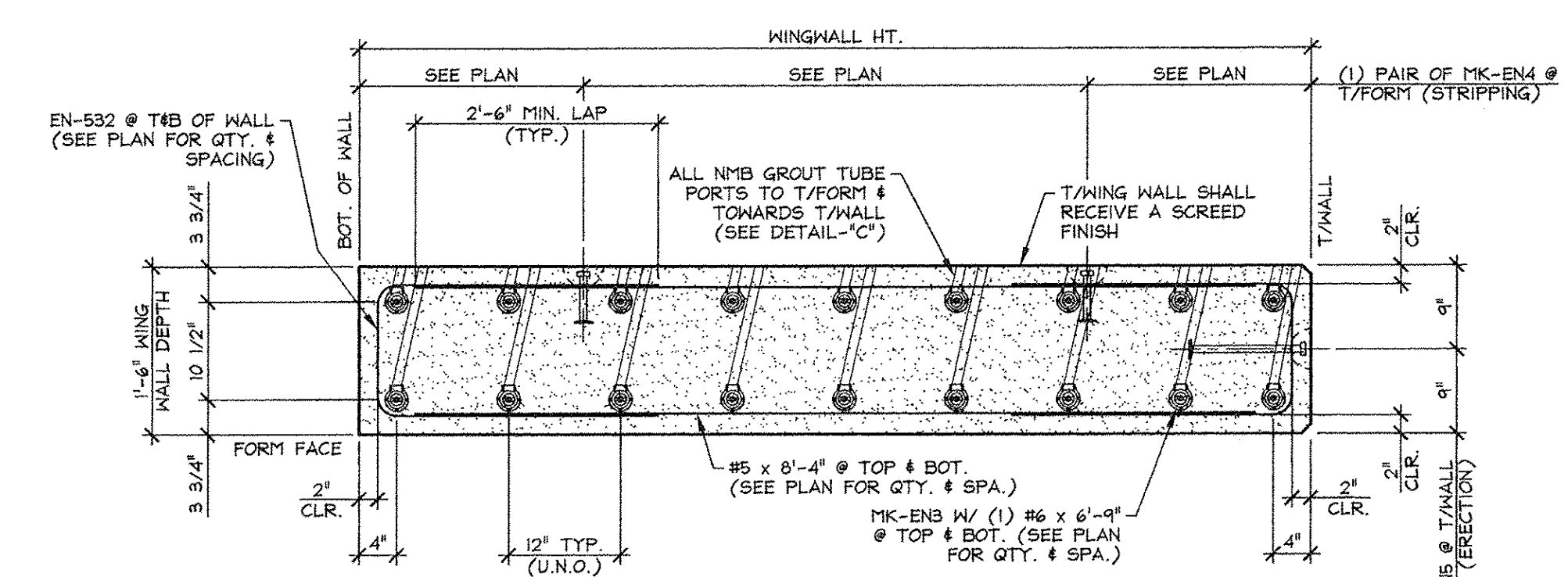
2 PLAN VIEW IN FORM
 WW2 1/2" = 1'-0"



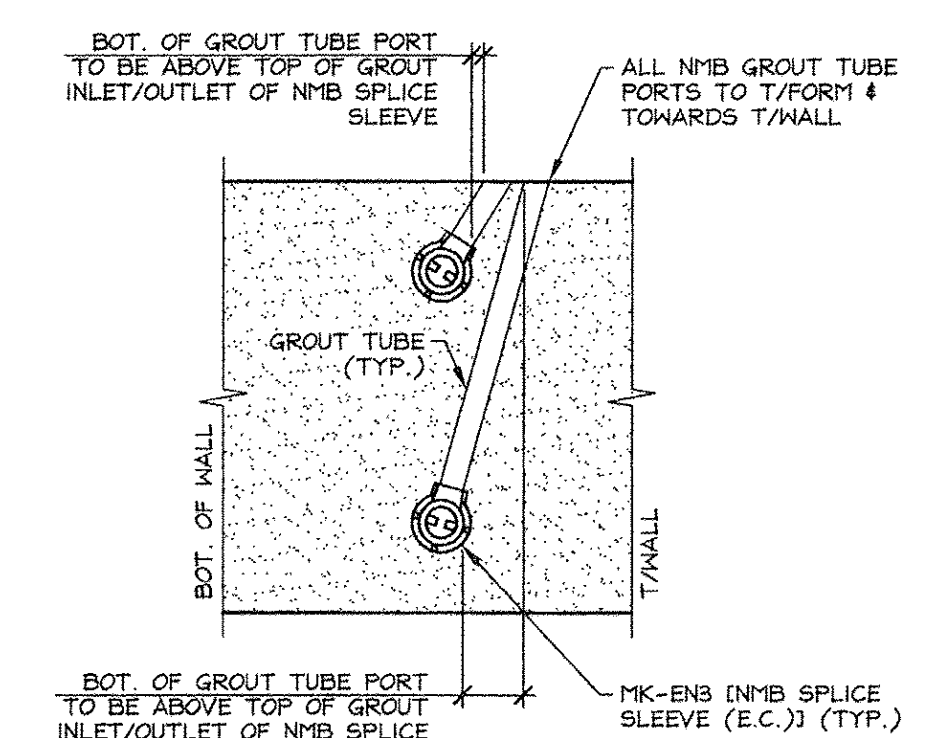
3 PLAN VIEW IN FORM
 WW3 1/2" = 1'-0"



A TRANSVERSE SECTION
 WW2 1/2" = 1'-0"



B WINGWALL ELEVATION
 WW1 3/4" = 1'-0"



SHOP NOTE:
 ALL EDGES OF WING WALLS, FORM FACE & T/WALL FACE, SHALL RECEIVE A 1" CHAMFER (UNLESS NOTED OTHERWISE)

SHOP NOTE:
 f'c = 5,000 PSI
 f'd = 3,500 PSI
 MIX: #446M5CC

ISSUED FOR PRODUCTION
 APR 09 2014
 J.P. CARRARA & SONS, INC.
 MIDDLEBURY, VT 05753

MARK: EN-WW1	QTY.: 1	WT.: 7.95 T	VOL.: 3.93 cy
MARK: EN-WW2	QTY.: 1	WT.: 7.51 T	VOL.: 3.71 cy
MARK: EN-WW3	QTY.: 1	WT.: 7.41 T	VOL.: 3.66 cy

MATERIAL LIST / WINGWALL					
ITEM	MARK	DESCRIPTION	QTY. / WINGWALL		
			EN-WW1	EN-WW2	EN-WW3
1	EN-532	#5 BENT BAR (LEVEL 1, BLACK STEEL)	16	16	16
2		#5 x 8'-4" (LEVEL 1, BLACK STEEL)	16	16	16
3					
4					
5		#6 x 6'-9" (LEVEL 1, BLACK STEEL)	20	20	18
6					
7					
8					
9					
10	MK-ENB	N#B SPLICE SLEEVE 6U-X(PG) (BLACK STEEL)	20	20	18
11	MK-EN4	4T x 7 1/8" SWIFT LIFT LIFTER	4	4	4
12	MK-EN5	8T x 13 3/8" SWIFT LIFT LIFTER	2	2	2
13					
14					
15					

APPROVAL STAMP:	J.P. CARRARA & SONS INC. Precast & Prestress Manufacturer 2464 DGE STR., MIDDLEBURY, VERMONT 05753 Phone:(802)388-6361 Fax:(802)388-9010	A.L. ST. ONGE CONTRACTOR, INC. CONTRACTOR MONTGOMERY CENTER, VERMONT
	STATE OF VERMONT AGENCY OF TRANSPORTATION COUNTY OF FRANKLIN	DATE: JAN. 27, 2014 SCALE: NOTED
	TOWN OF ENOSBURG BOSTON POST ROAD T.H.2 CLASS 2 BRIDGE NO.: 48 PROJECT NO.: BRO 1448(40)	CHKD: M.W. DFTM: B.L. JOB NO: 23418-013
	PRECAST WINGWALL DETAILS	DWG. NO: WW2