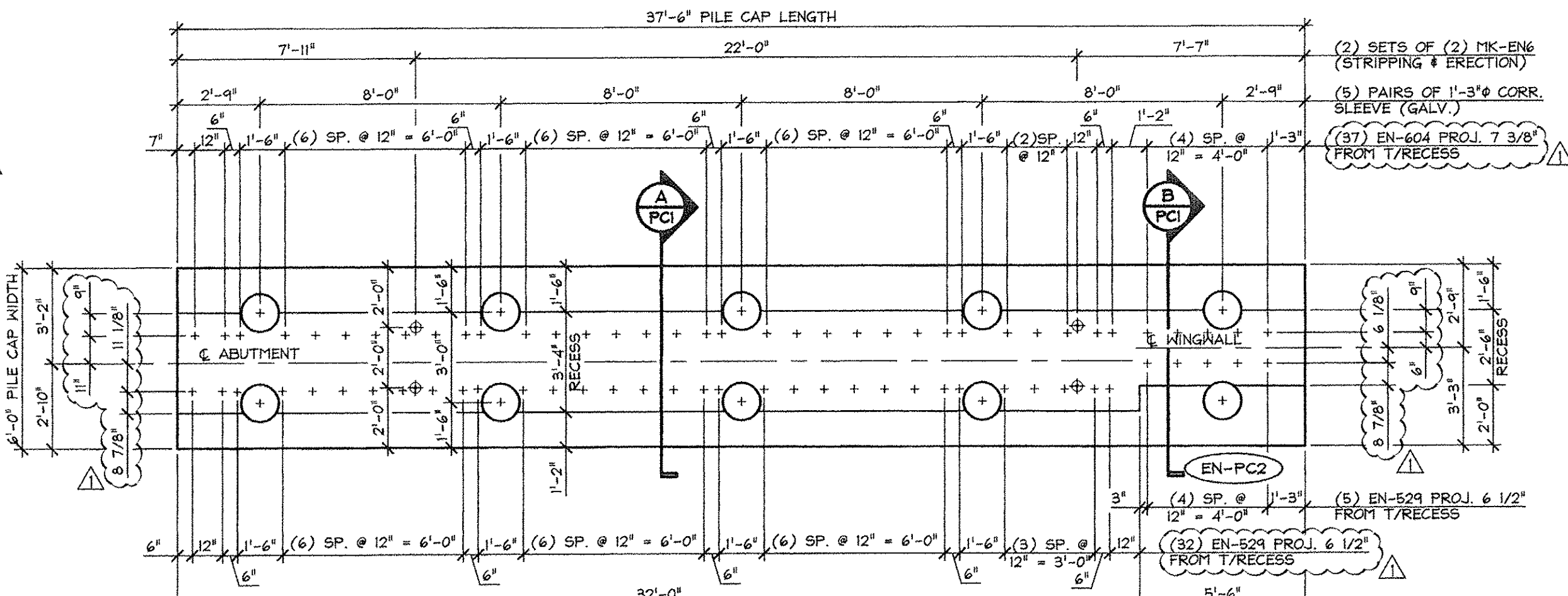
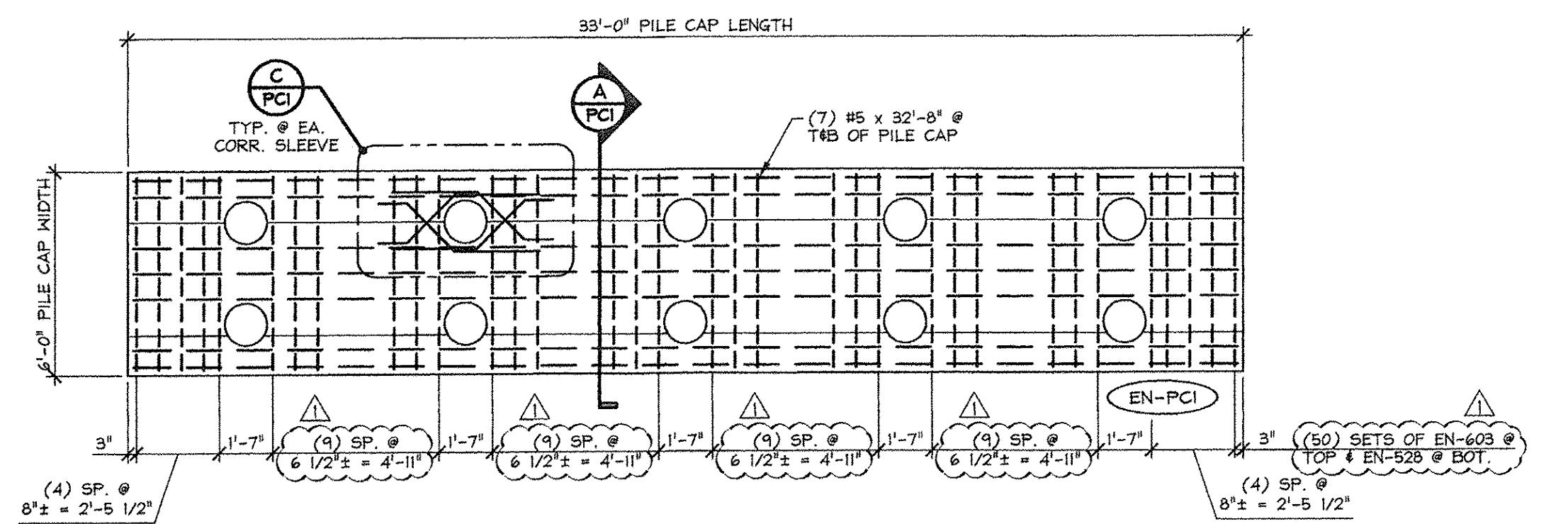


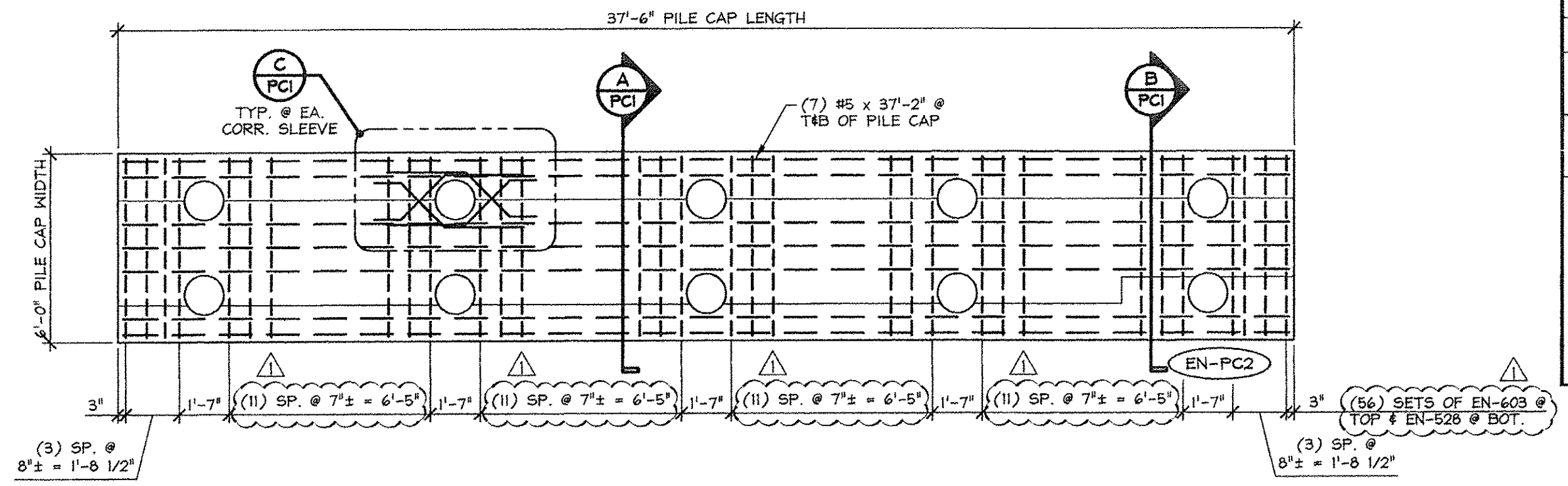
1 DIMENSIONAL PLAN VIEW IN FORM
PCI 1/4" = 1'-0"



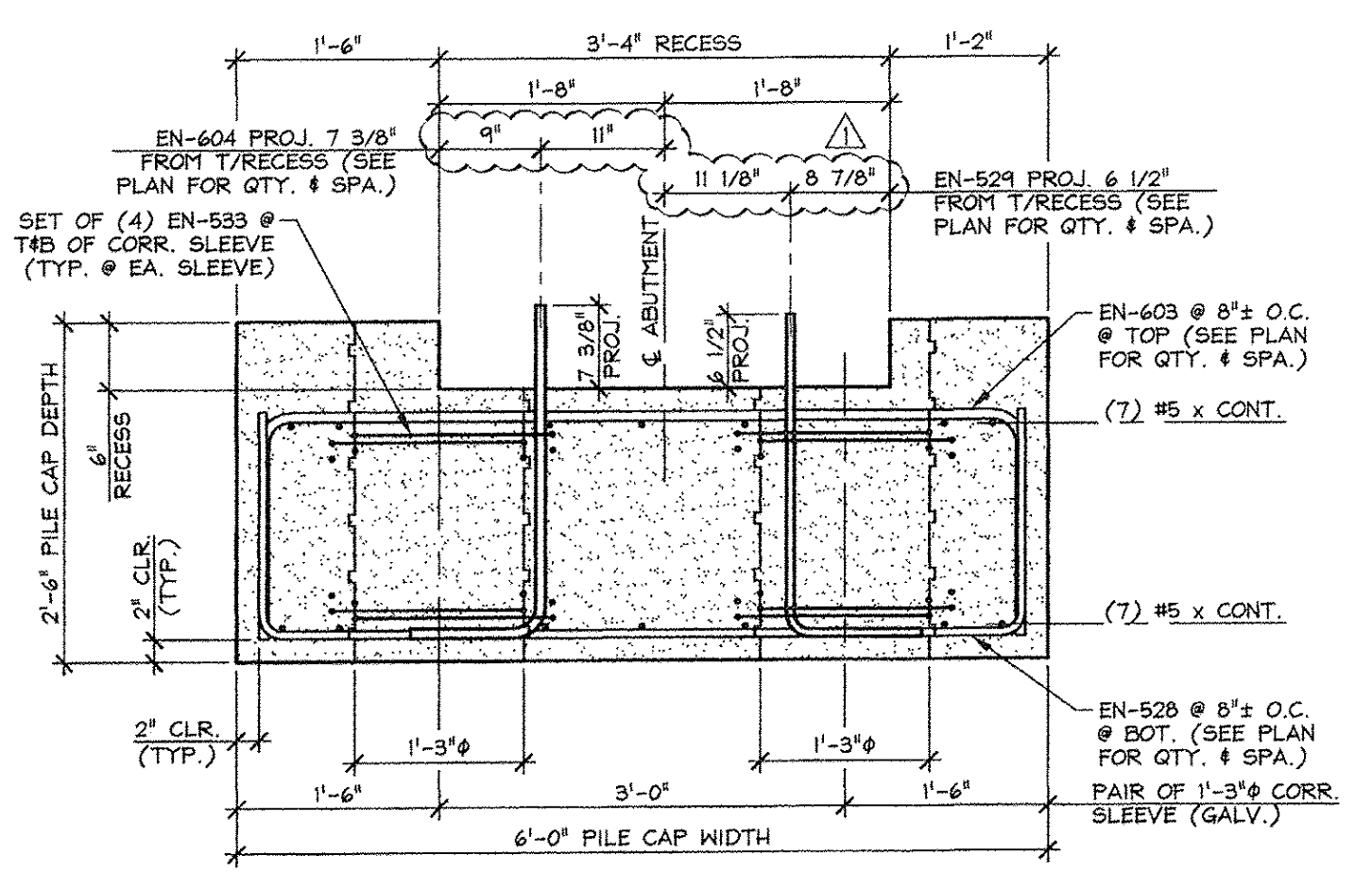
3 DIMENSIONAL PLAN VIEW IN FORM
PCI 1/4" = 1'-0"



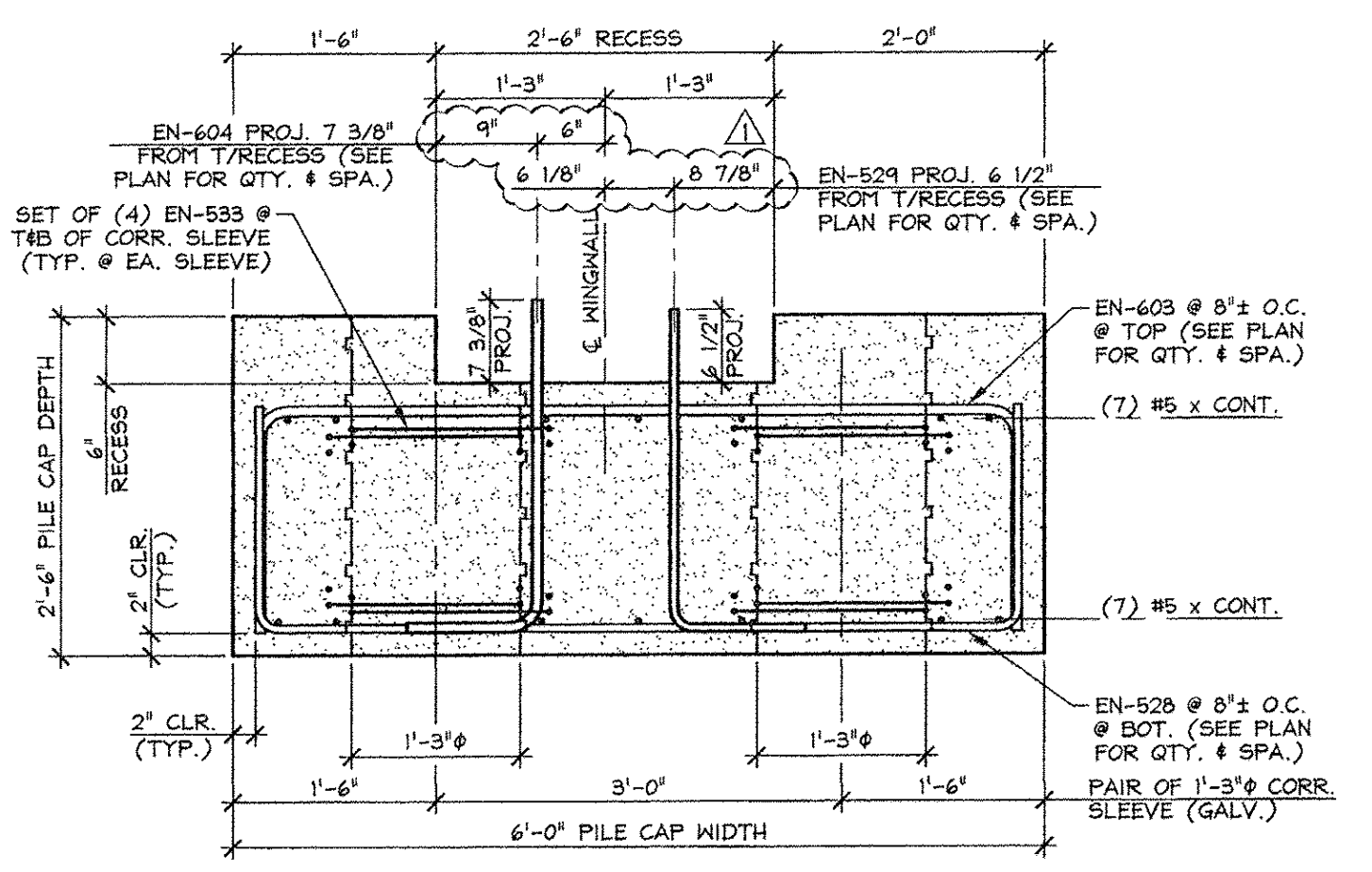
2 REINFORCING PLAN VIEW IN FORM
PCI 1/4" = 1'-0"



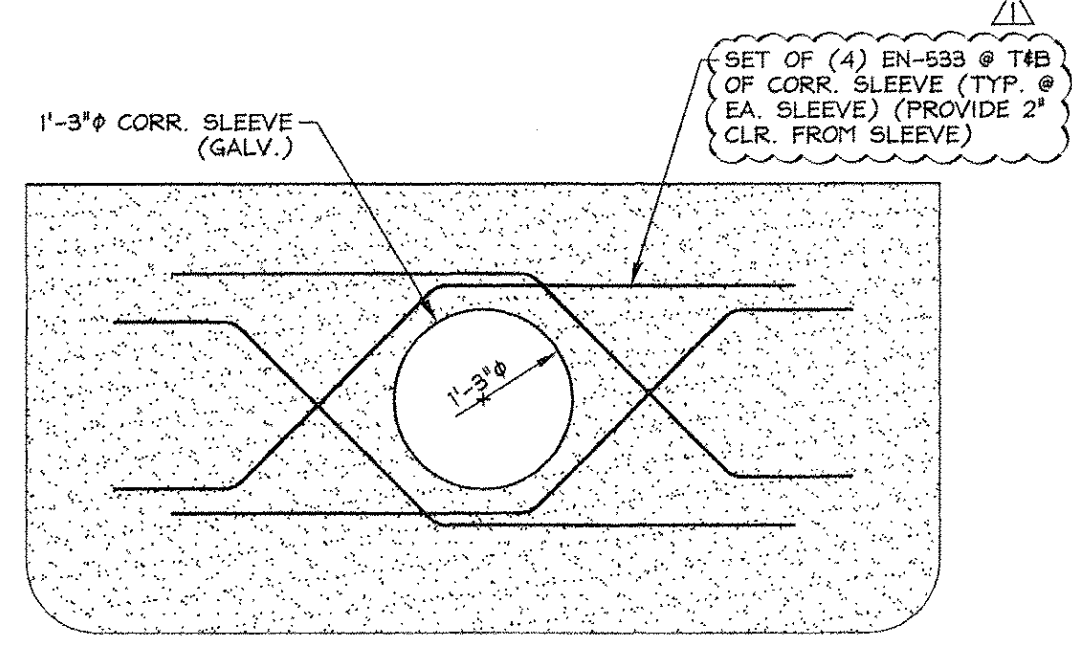
4 REINFORCING PLAN VIEW IN FORM
PCI 1/4" = 1'-0"



A PILE CAP SECTION
PCI 3/4" = 1'-0"



B PILE CAP SECTION
PCI 3/4" = 1'-0"



C CORRUGATED SLEEVE
PCI REINFORCING DETAIL 3/4" = 1'-0"

Vermont Agency of Transportation
RECEIVED
ON: April 9, 2014
and Checked for
CONFORMANCE
BY: Rob Young DATE: 04/14/2014

APPROVED: Approval of drawings and/or procedures indicates concurrence with the information presented and does not relieve the Contractor or Fabricator of compliance with all specifications and code requirements	X	
APPROVED AS NOTED		
REVISE AND RESUBMIT		
NOT REVIEWED		
Date:	4-11-2014	
By:	<i>James Hynes</i>	
<p>This review of Stantec Consulting Services Inc. is for the sole purpose of ascertaining conformance with the general design concept. This review shall not mean that Stantec Consulting Services Inc. approves the detail design inherent in the shop drawings, responsibility for which shall remain with the Contractor. Submitting same, and such review shall not relieve the Contractor of his responsibility for errors or omissions in the shop drawing or of his responsibility for meeting all requirements of the Contract Documents. The contractor is responsible for dimensions to be confirmed and correlated at the job site, for information that pertains solely to the fabrication processes or to techniques of construction and installation and for coordination of the work of all subtrades.</p>		

SHOP NOTE:
Fc = 5,000 PSI
Fci = 3,500 PSI
MIX: #44FTSCC

ISSUED FOR PRODUCTION
APR 09 2014
J. P. CARRARA & SONS, INC.
MIDDLEBURY, VT 05753

MARK: EN-PCI	QTY.: 1	WT.: 31.2 T	VOL.: 15.4 cy
MARK: EN-PC2	QTY.: 1	WT.: 35.8 T	VOL.: 17.7 cy

MATERIAL LIST / PILE CAP				
ITEM	MARK	DESCRIPTION	QTY./PILE CAP	
			EN-PCI	EN-PC2
1	EN-526	#5 BENT BAR (LEVEL 1, BLACK STEEL)	50	56
2	EN-524	#5 BENT BAR (LEVEL 1, BLACK STEEL)	33	37
3	EN-533	#5 BENT BAR (LEVEL 1, BLACK STEEL)	80	80
4		#5 x 32'-8" (LEVEL 1, BLACK STEEL)	14	
5		#5 x 37'-2" (LEVEL 1, BLACK STEEL)		14
6				
7	EN-603	#6 BENT BAR (LEVEL 1, BLACK STEEL)	50	56
8	EN-604	#6 BENT BAR (LEVEL 1, BLACK STEEL)	33	37
9				
10		1'-3" x 2'-6" CORRUGATED SLEEVE (GALV.)	10	10
11				
12	MK-EN6	20 T x 19 3/4" SWIFT LIFT LIFTER	4	4
13				
14				
15				

APPROVAL STAMP:	J.P. CARRARA & SONS INC. Precast & Prestress Manufacturer 2464 CASE STR., MIDDLEBURY, VERMONT 05753 Phone: (802)388-6361 Fax: (802)388-9010	A.L. ST. ONGE CONTRACTOR, INC. CONTRACTOR MONTGOMERY CENTER, VERMONT
	STATE OF VERMONT AGENCY OF TRANSPORTATION COUNTY OF FRANKLIN	DATE: JAN. 27, 2014 SCALE: NOTED
	TOWN OF ENOSBURG BOSTON POST ROAD T.H.2 CLASS 2 BRIDGE NO.: 48 PROJECT NO.: BRO 1448(40)	CHKD: M.W. DFTM: B.L. JOB NO: 23418-013
	PRECAST PILE CAP DETAILS	DWG. NO: PCI