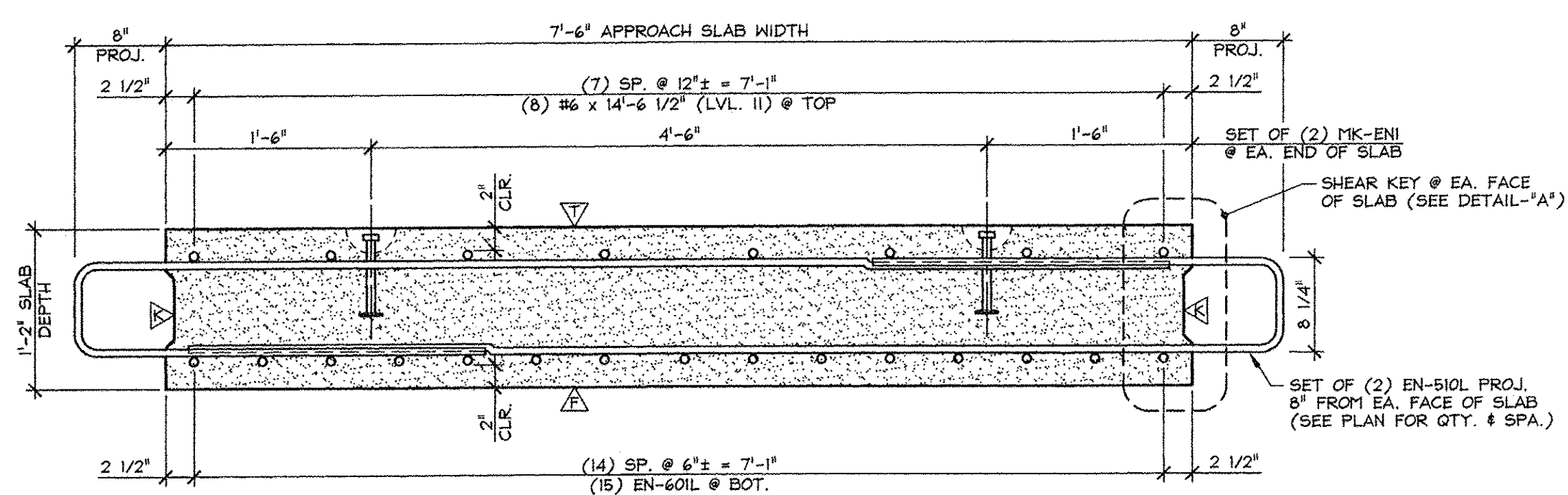
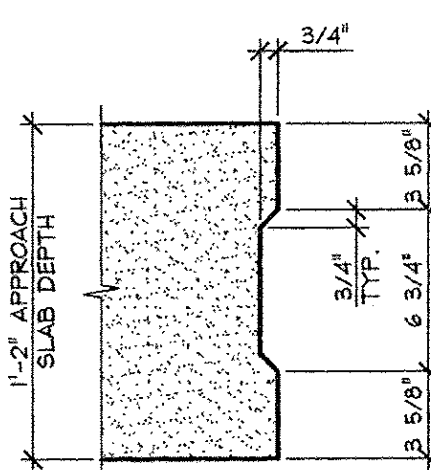


**1** APPROACH SLAB PLAN VIEW IN FORM  
AS2  
1/2" = 1'-0"

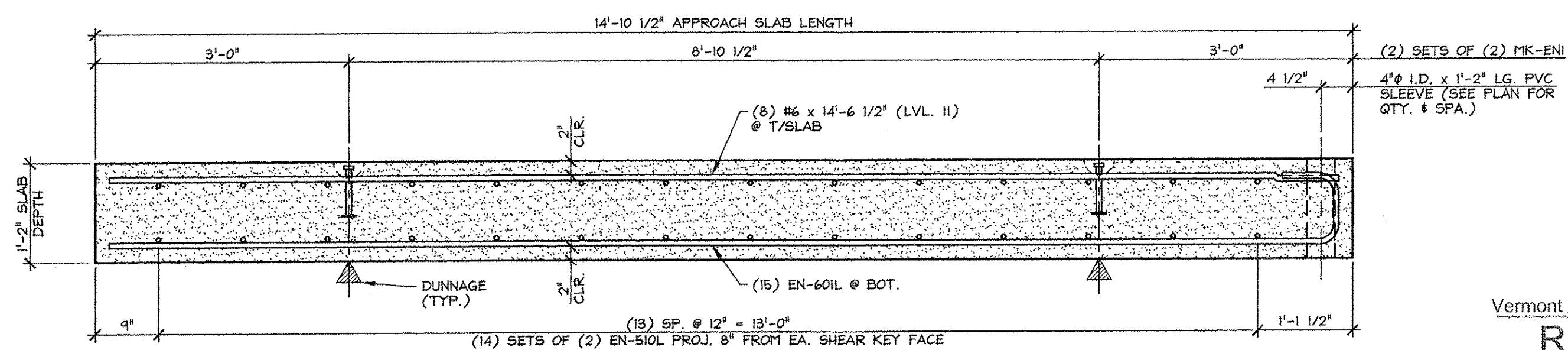


**A** TRANSVERSE SECTION  
AS2  
1" = 1'-0"

- △ DENOTES FORM FINISH
- △ DENOTES FLOAT FINISH
- △ DENOTES ROUGHENED FINISH



DETAIL - "A"  
1 1/2" = 1'-0"



**B** LONGITUDINAL SECTION  
AS2  
3/4" = 1'-0"

Vermont Agency of Transportation  
**RECEIVED**  
ON: April 9, 2014  
and Checked for  
**CONFORMANCE**  
BY: Rob Young DATE: 04/14/2014

APPROVED: Approval of drawings and/or procedures indicates concurrence with the information presented and does not relieve the Contractor or Fabricator of compliance with all specifications and code requirements	
APPROVED AS NOTED	
REVISE AND RESUBMIT	
NOT REVIEWED	

Date: 4-11-2014  
By: *James H. [Signature]*  
This review by Stantec Consulting Services Inc. is for the sole purpose of ascertaining conformance with the general design concept. This review shall not mean that Stantec Consulting Services Inc. approves the detail design inherent in the shop drawings, responsibility for which shall remain with the Contractor. Submitting same, and such review shall not relieve the Contractor of his responsibility for errors or omissions in the shop drawing or of his responsibility for meeting all requirements of the Contract Documents. The contractor is responsible for dimensions to be confirmed and correlated at the job site, for information that pertains solely to the fabrication processes or to techniques of construction and installation and for coordination of the work of all subtrades.

ISSUED FOR PRODUCTION  
APR 09 2014  
J.P. CARRARA & SONS, INC.  
MIDDLEBURY, VT 05753

MARK: EN-AS2	QTY.: 2	WT.: 9.7 T	VOL.: 4.8 cy
MARK: -	QTY.: -	WT.: -	VOL.: -
MATERIAL LIST / APPROACH SLAB			
ITEM	MARK	DESCRIPTION	QTY./SLAB
1	EN-510L	#6 BENT BAR (LEVEL II, DUAL COATED)	28
2			
3			
4	EN-60IL	#6 BENT BAR (LEVEL II, DUAL COATED)	15
5		#6 x 14'-6 1/2" (LEVEL II, DUAL COATED)	8
6			
7			
8	MK-ENI	4T x 7 1/8" SWIFT LIFT LIFTER (GALVANIZE)	4
9		4" I.D. x 1'-2" PVC SLEEVE	4
10			

**J.P. CARRARA & SONS INC.** A.L. ST. ONGE CONTRACTOR, INC.  
Precast & Prestress Manufacturer CONTRACTOR  
2464 CASE STR., MIDDLEBURY, VERMONT 05753 Phone: (802)388-6361 Fax: (802)388-9010 MONTGOMERY CENTER, VERMONT

STATE OF VERMONT AGENCY OF TRANSPORTATION COUNTY OF FRANKLIN DATE: JAN. 27, 2014  
SCALE: NOTED

TOWN OF ENOSBURG CHKD: M.J.W. DFTM: B.L.  
BOSTON POST ROAD T.H.2 CLASS 2 JOB NO: 23418-013  
BRIDGE NO.: 48 PROJECT NO.: BRO 1448(40)

**PRECAST APPROACH SLAB DETAILS** DWG. NO: AS2