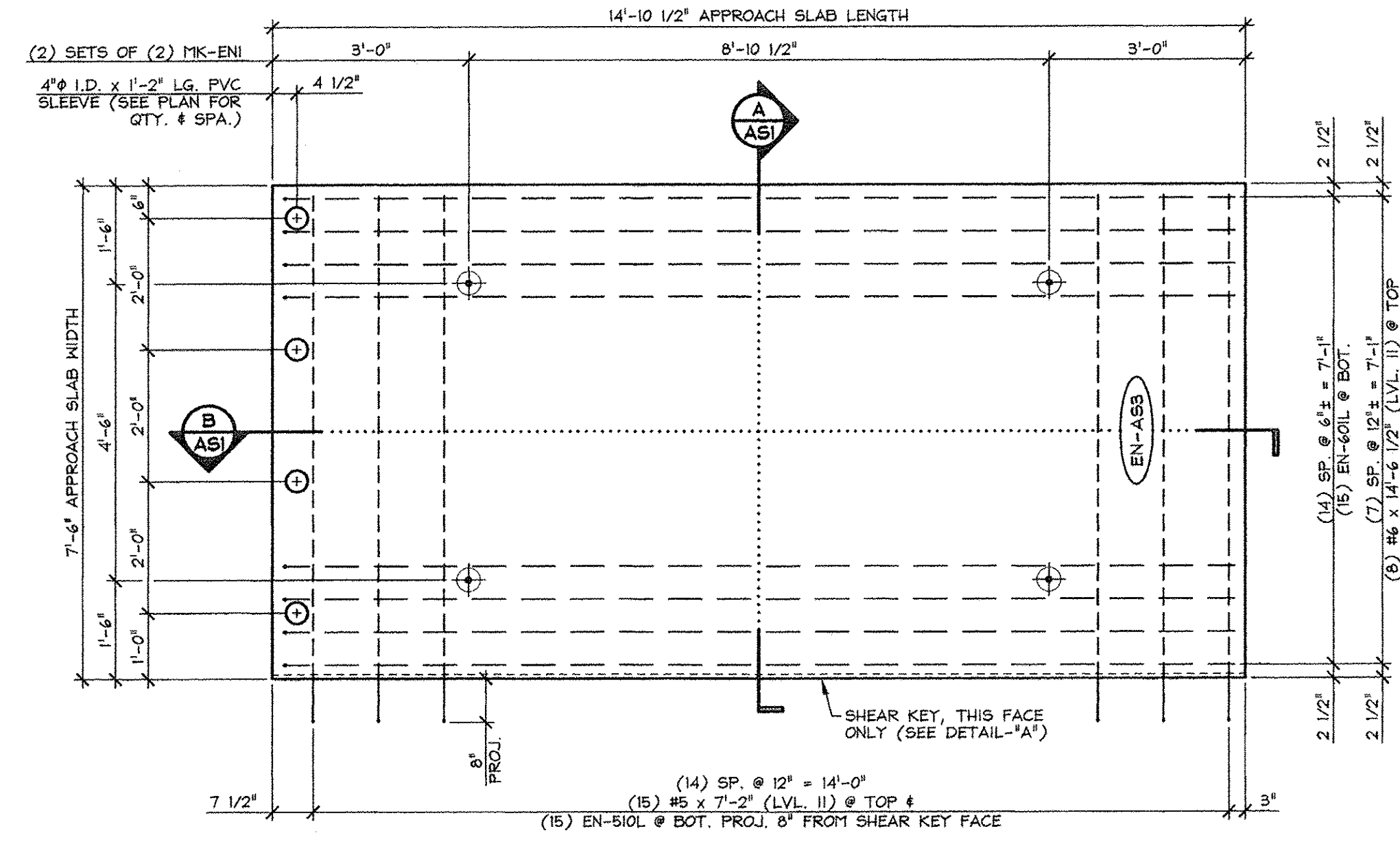
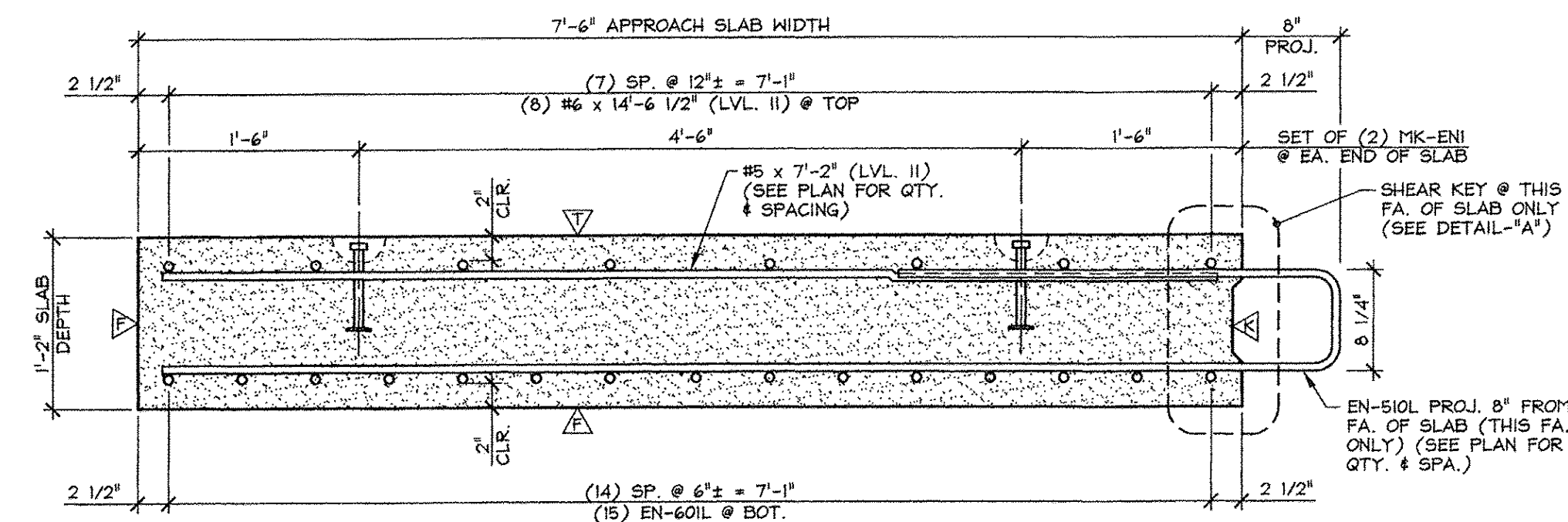


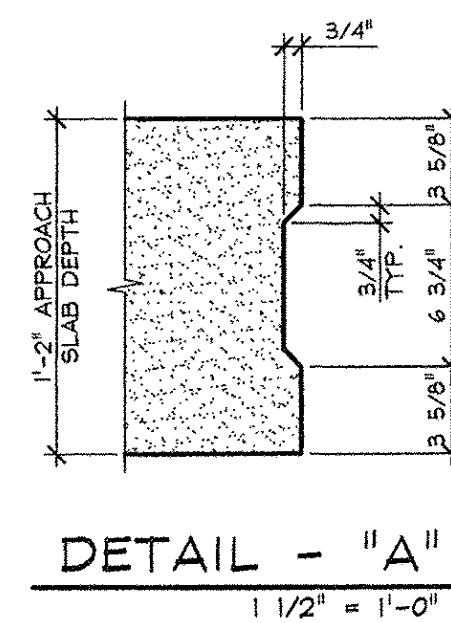
1 APPROACH SLAB PLAN VIEW IN FORM
ASI
1/2" = 1'-0"



2 APPROACH SLAB PLAN VIEW IN FORM
ASI
1/2" = 1'-0"

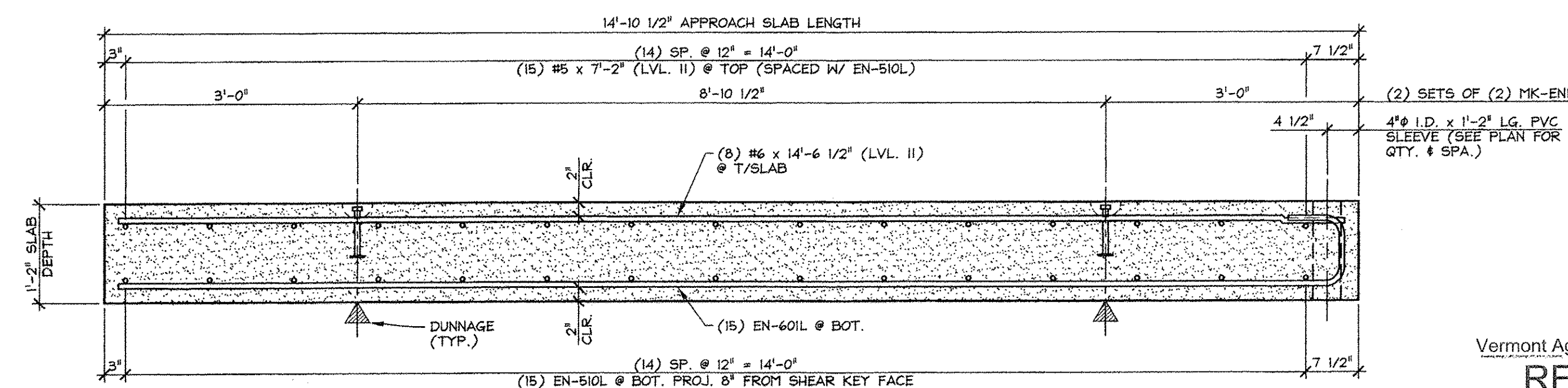


A TRANSVERSE SECTION
ASI
1" = 1'-0"



DETAIL - "A"
1 1/2" = 1'-0"

- △ DENOTES FORM FINISH
- △ DENOTES FLOAT FINISH
- △ DENOTES ROUGHENED FINISH



B LONGITUDINAL SECTION
ASI
3/4" = 1'-0"

Vermont Agency of Transportation
RECEIVED
ON: April 9, 2014
and Checked for
CONFORMANCE
BY: Rob Young DATE: 04/14/2014

APPROVED: Approval of drawings and/or procedures indicates concurrence with the information presented and does not relieve the Contractor or Fabricator of compliance with all specifications and code requirements

APPROVED AS NOTED

REVISE AND RESUBMIT

NOT REVIEWED

Date: 4-11-2014

By: James H. [Signature]

This review by Stantec Consulting Services Inc. is for the sole purpose of ascertaining conformance with the general design concept. This review shall not mean that Stantec Consulting Services Inc. approves the detail design inherent in the shop drawings, responsibility for which shall remain with the Contractor. Submitting same, and such review shall not relieve the Contractor of his responsibility for errors or omissions in the shop drawing or of his responsibility for meeting all requirements of the Contract Documents. The contractor is responsible for dimensions to be confirmed and correlated at the job site, for information that pertains solely to the fabrication processes or to techniques of construction and installation and for coordination of the work of all subtrades.

Stantec

ISSUED FOR PRODUCTION
APR 09 2014
J.P. CARRARA & SONS, INC.
MIDDLEBURY, VT 05753

MARK: EN-ASI	QTY.: 1	WT.: 9.7 T	VOL.: 4.8 cy
MARK: EN-AS3	QTY.: 1	WT.: 9.7 T	VOL.: 4.8 cy

MATERIAL LIST / APPROACH SLAB				
ITEM	MARK	DESCRIPTION	QTY./SLAB	
			EN-ASI	EN-AS3
1	EN-510L	#5 BENT BAR (LEVEL II, DUAL COATED)	15	15
2		#5 x 7'-2" (LEVEL II, DUAL COATED)	15	15
3				
4				
5	EN-60IL	#6 BENT BAR (LEVEL II, DUAL COATED)	15	15
6		#6 x 14'-6 1/2" (LEVEL II, DUAL COATED)	8	8
7				
8	MK-ENI	4T x 7 1/8" SHIFTS LIFT LIFTER (GALVANIZE) △	4	4
9		4" I.D. x 1'-2" PVC SLEEVE	4	4
10				

J.P. CARRARA & SONS INC. A.L. ST. ONGE CONTRACTOR, INC.
Precast & Prestress Manufacturer CONTRACTOR
2464 OAK ST., MIDDLEBURY, VERMONT 05753 Phone: (802)388-8361 Fax: (802)388-9010 MONTGOMERY CENTER, VERMONT

STATE OF VERMONT AGENCY OF TRANSPORTATION COUNTY OF FRANKLIN
DATE: JAN. 27, 2014
SCALE: NOTED

TOWN OF ENOSBURG
BOSTON POST ROAD T.H.2 CLASS 2
BRIDGE NO.: 48 PROJECT NO.: BRO 1448(40)
CHKD: M.W. DFTM: B.L.
JOB NO: 23418-013

PRECAST APPROACH SLAB DETAILS DWG. NO: ASI