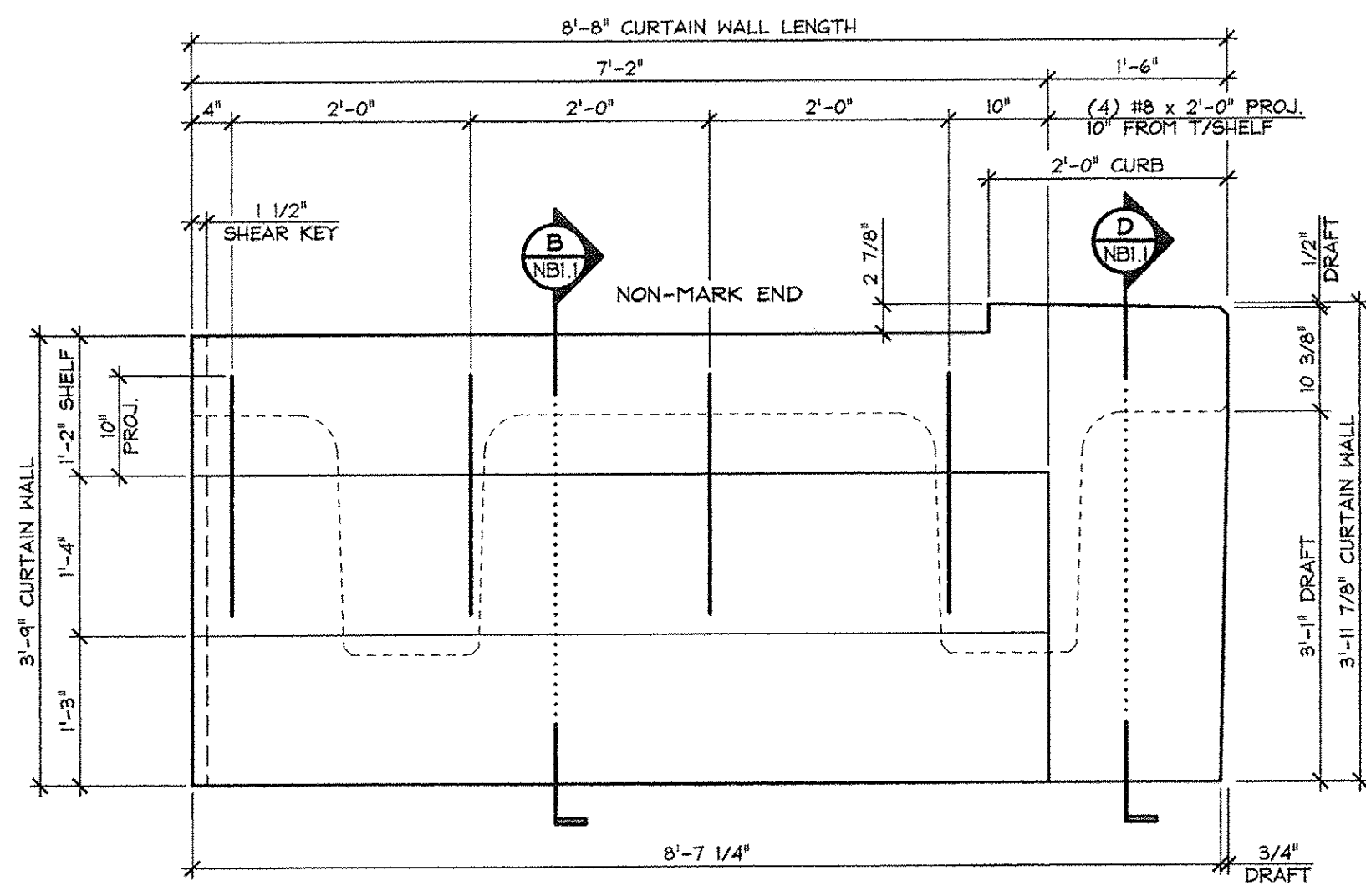
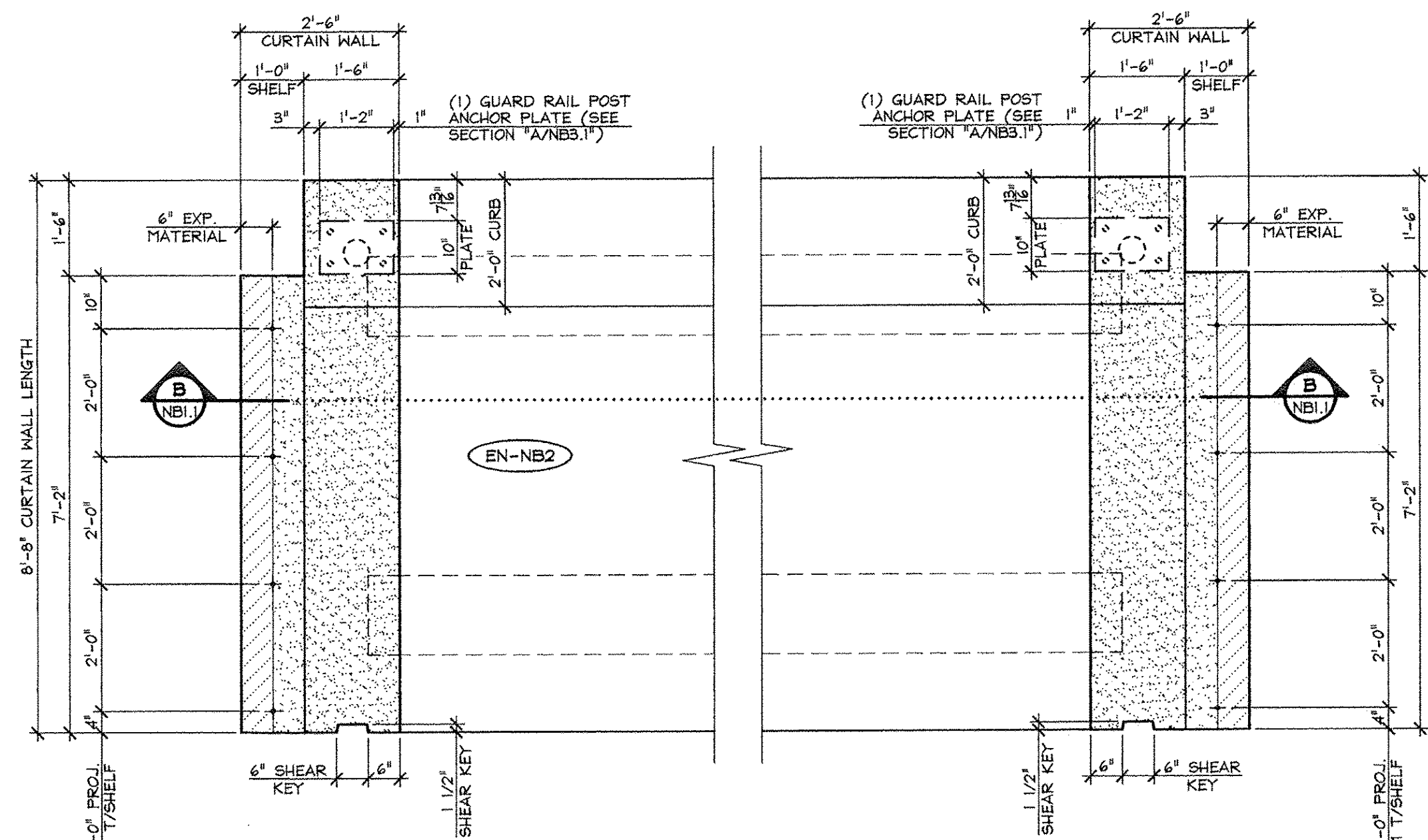


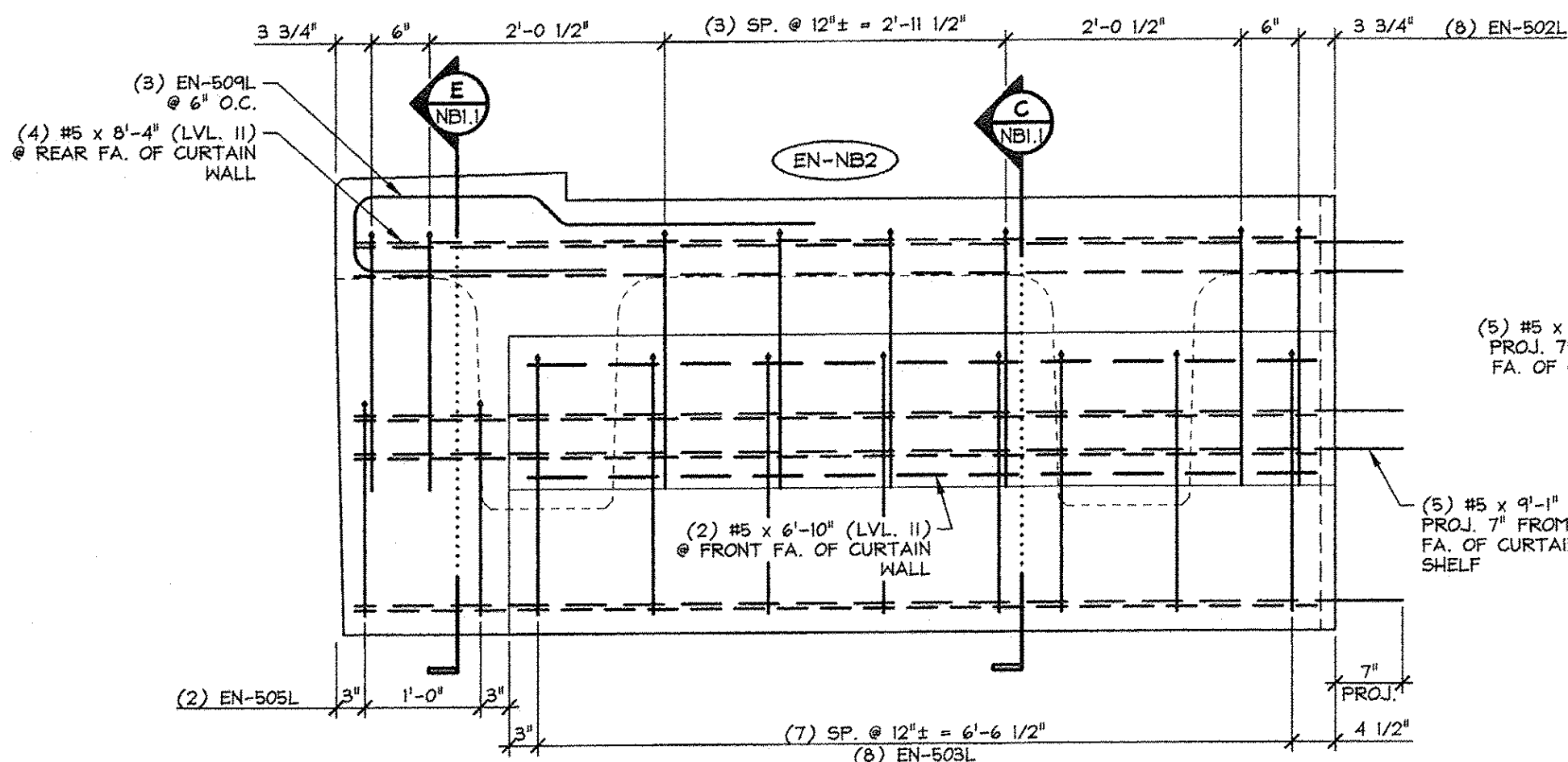
1 CURTAIN WALL DIMENSIONAL ELEVATION
 NB3.1 VOL.: 2.11 cy WT.: 4.28 T
 3/4" = 1'-0"



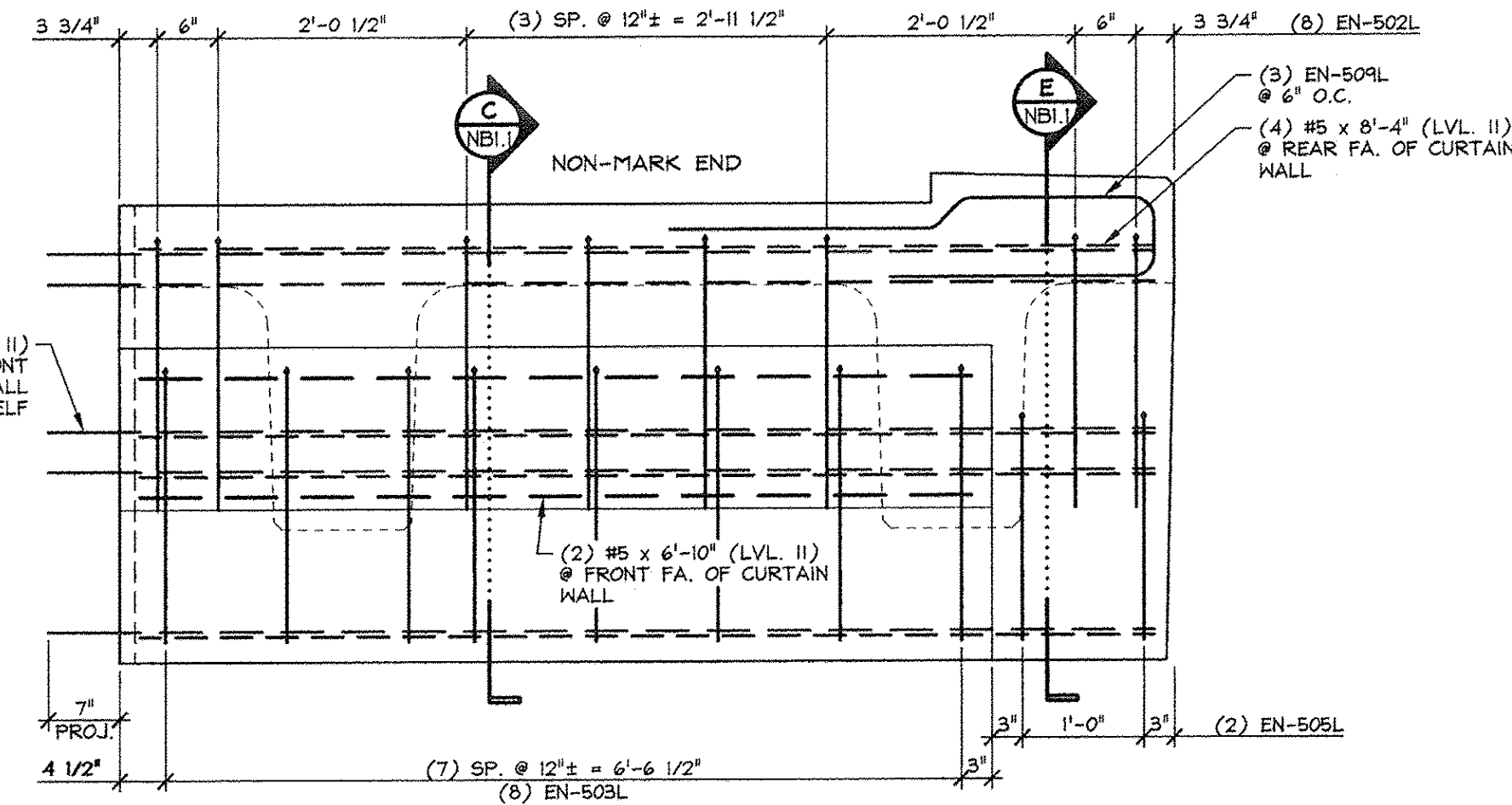
3 CURTAIN WALL DIMENSIONAL ELEVATION
 NB3.1 VOL.: 2.11 cy WT.: 4.28 T
 3/4" = 1'-0"



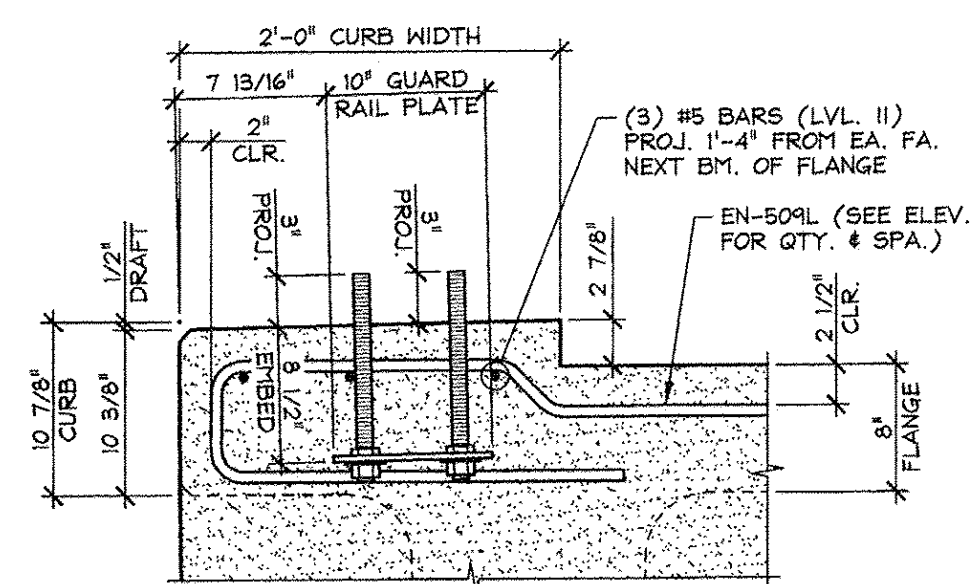
5 CURTAIN WALL DIMENSIONAL PLAN
 NB3.1 1/2" = 1'-0"



2 CURTAIN WALL REINFORCING ELEVATION
 NB3.1 3/4" = 1'-0"



4 CURTAIN WALL REINFORCING ELEVATION
 NB3.1 3/4" = 1'-0"



A CURB & GUARD RAIL ANCHOR PLATE SECTION
 NB3.1 1" = 1'-0"

58.67 T = NEXT BEAM
 4.28 T = CURTAIN WALL (MARK END)
 4.28 T = CURTAIN WALL (NON-MARK END)
 67.2 T = TOTAL BEAM WT.

ISSUED FOR PRODUCTION
 APR 09 2014
 J. P. CARRARA & SONS, INC.
 MIDDLEBURY, VT 05753

MATERIAL LIST / CURTAIN WALL				
ITEM	MARK	DESCRIPTION	QTY./CURTAIN WALL	
			MARK END	NON-MARK END
1	SH-502L	#5 BENT BAR (LEVEL II, DUAL COATED)	8	8
2	SH-503L	#5 BENT BAR (LEVEL II, DUAL COATED)	8	8
3	SH-505L	#5 BENT BAR (LEVEL II, DUAL COATED)	2	2
4	SH-509L	#5 BENT BAR (LEVEL II, DUAL COATED)	3	3
5				
6		#5 x 6'-10" (LVL. II, DUAL COATED)	2	2
7		#5 x 8'-4" (LVL. II, DUAL COATED)	4	4
8		#5 x 9'-1" (LVL. II, DUAL COATED)	5	5
9				
10				
11				
12				
13		GUARD RAIL ANCHOR PLATE (GALV.) (SUPPLIED BY OTHERS)	1	1
14		#5 x 2'-0" (LEVEL II, DUAL COATED)	4	4
15				

APPROVED: Approval of drawings and/or procedures indicates concurrence with the information presented and does not relieve the Contractor or Fabricator of compliance with all specifications and code requirements

APPROVED AS NOTED

REVISE AND RESUBMIT

NOT REVIEWED

Date: 4-11-2014

By: James H. [Signature]

This review by Stantec Consulting Services Inc. is for the sole purpose of ascertaining conformance with the general design concept. This review shall not mean that Stantec Consulting Services Inc. approves the detail design inherent in the shop drawings, responsibility for which shall remain with the Contractor. Submitting same, and such review shall not relieve the Contractor of his responsibility for errors or omissions in the shop drawing or of his responsibility for meeting all requirements of the Contract Documents. The contractor is responsible for dimensions to be confirmed and correlated at the job site, for information that pertains solely to the fabrication processes or to techniques of construction and installation and for coordination of the work of all subtrades.

Stantec

Vermont Agency of Transportation
RECEIVED
 ON: April 9, 2014
 and Checked for
CONFORMANCE
 BY: Rob Young DATE: 04/14/2014

J.P. CARRARA & SONS INC. A.L. ST. ONGE CONTRACTOR, INC.
 Precast & Prestress Manufacturer CONTRACTOR
 244 OGE STR., MIDDLEBURY, VERMONT 05753 Phone: (802)368-6361 Fax: (802)368-9010 MONTGOMERY CENTER, VERMONT

STATE OF VERMONT AGENCY OF TRANSPORTATION COUNTY OF FRANKLIN

TOWN OF ENOSBURG
 BOSTON POST ROAD T.H.2 CLASS 2
 BRIDGE NO.: 48 PROJECT NO.: BRO 1448(40)

DATE: JAN. 27, 2014
 SCALE: NOTED
 CHKD: M.W. DFTM: B.L.
 JOB NO: 23418-013
 DWG. NO: NB3.1

PRECAST CURTAIN WALL DETAILS