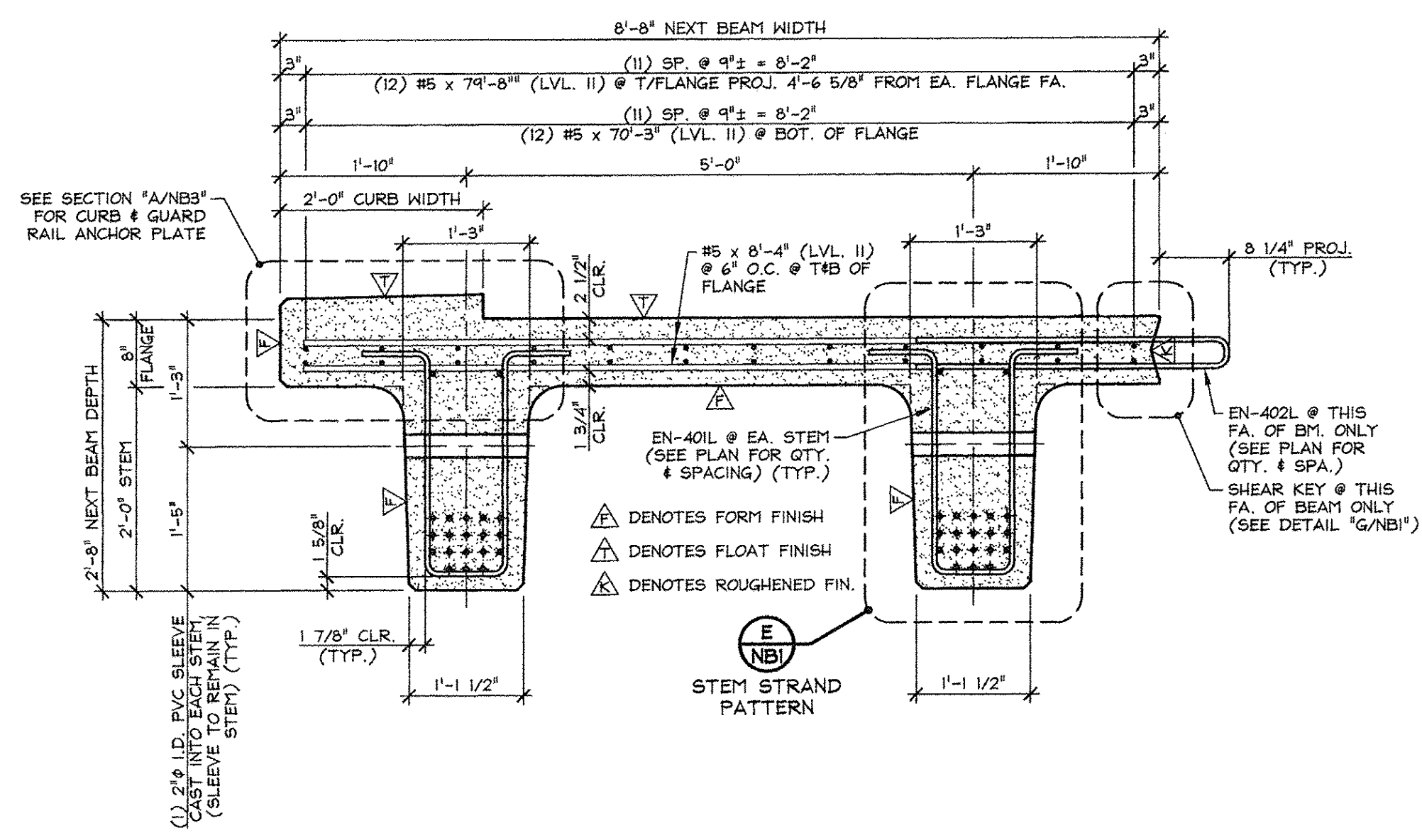
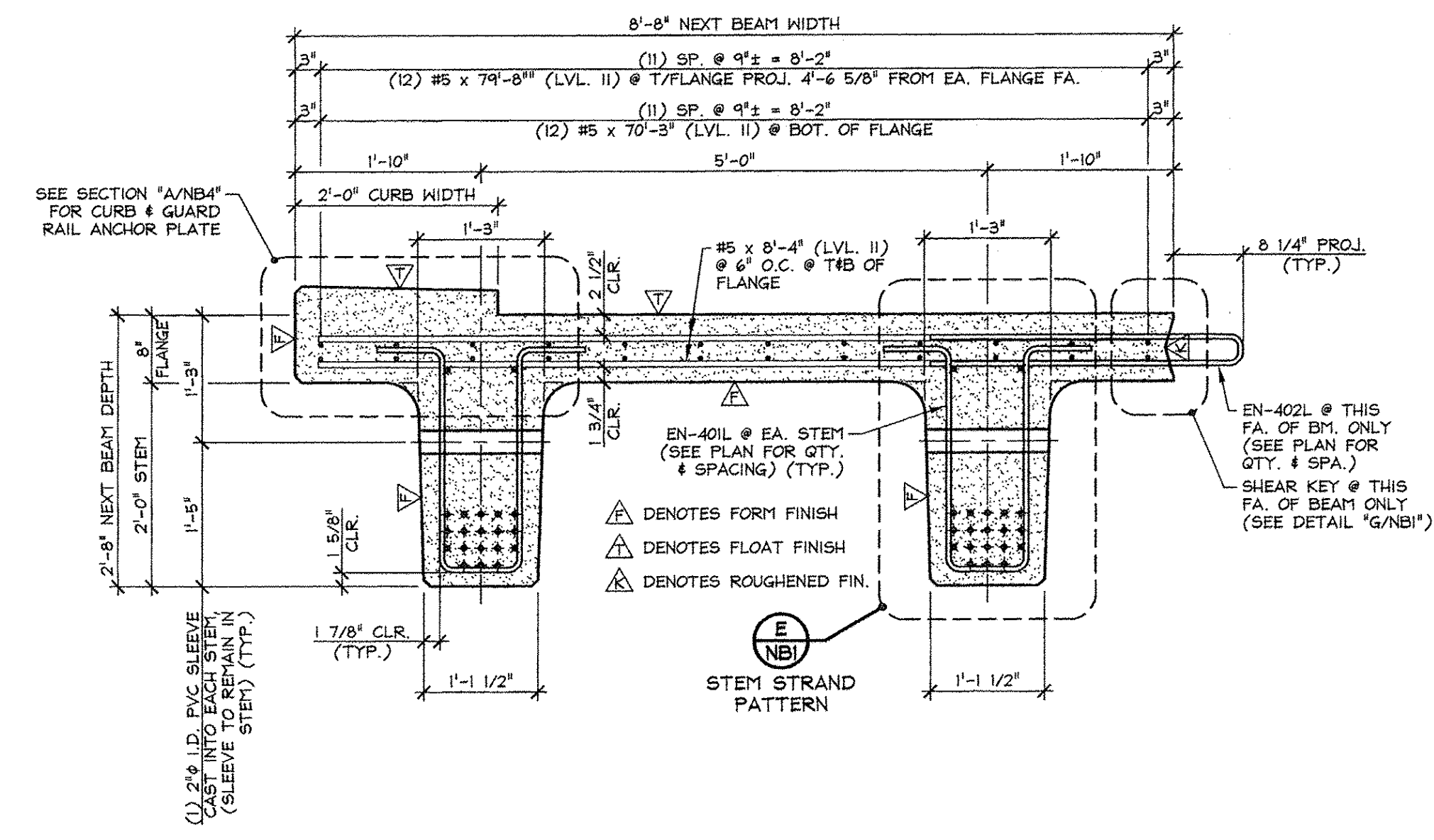


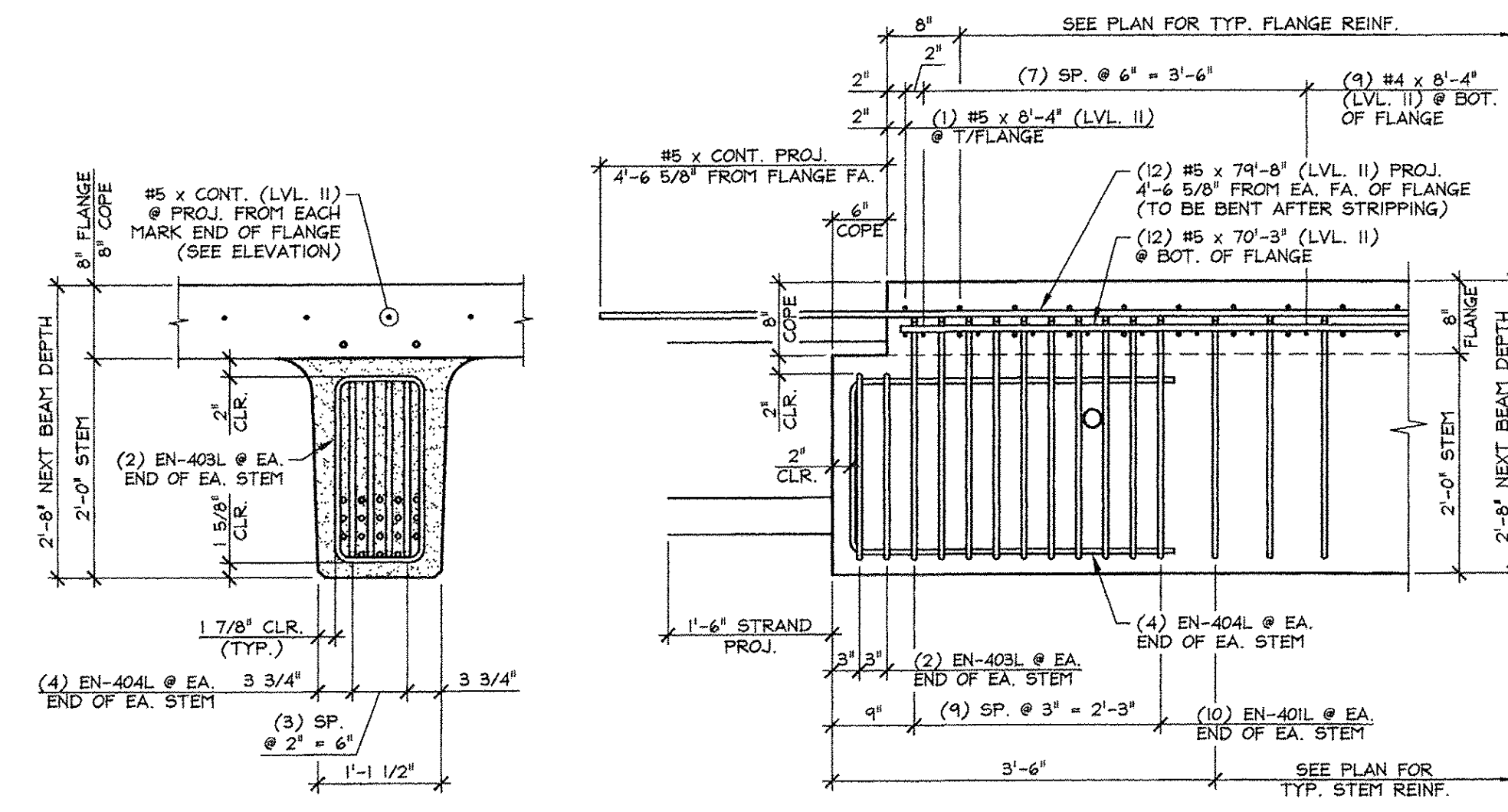
**A** DIMENSIONAL & REINFORCING SECTION  
NBI 3/4" = 1'-0"



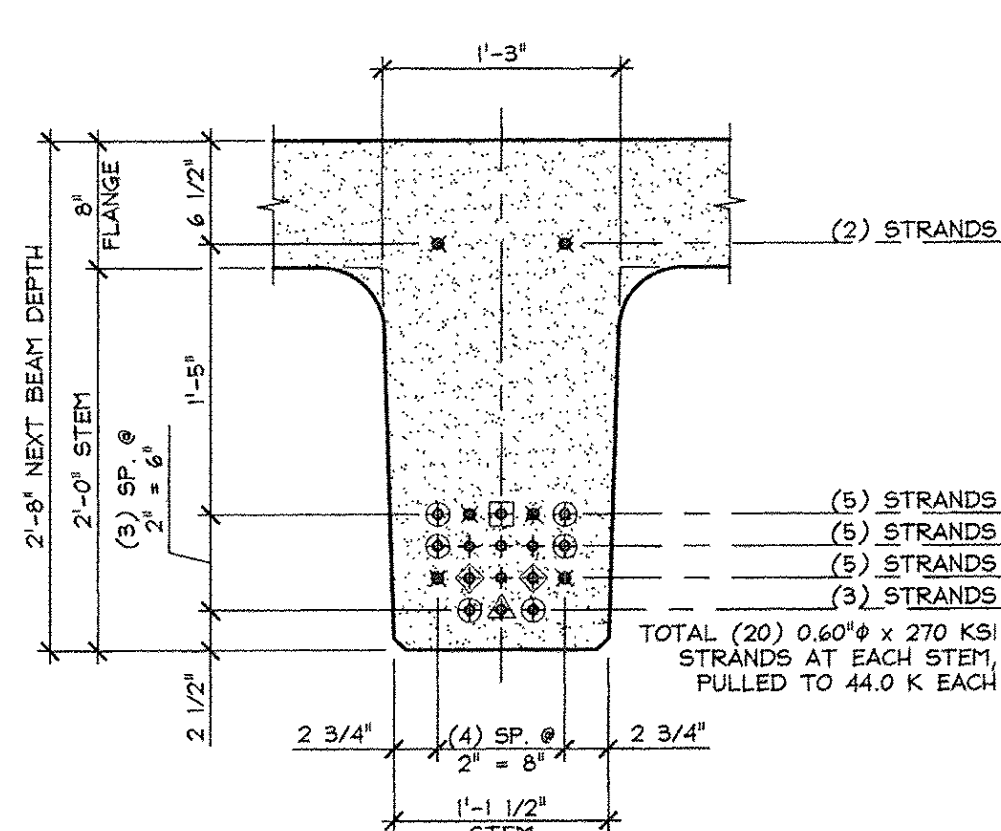
**B** DIMENSIONAL & REINFORCING SECTION  
NBI 3/4" = 1'-0"



**C** DIMENSIONAL & REINFORCING SECTION  
NBI 3/4" = 1'-0"



**D** END BLOCK STEM REINFORCING DETAILS  
NBI SEE CURTAIN WALL DETAILS FOR PROJECTING BAR BENDING & PROJECTING STRAND BENDING ('A/NBI.1'). 3/4" = 1'-0"



**E** STEM STRAND PATTERN  
NBI 1" = 1'-0"

Vermont Agency of Transportation  
**RECEIVED**  
ON: April 9, 2014  
and Checked for  
**CONFORMANCE**  
BY: Rob Young DATE: 04/14/2014

APPROVED: Approval of drawings and/or procedures indicates concurrence with the information presented and does not relieve the Contractor or Fabricator of compliance with all specifications and code requirements.

APPROVED AS NOTED

REVISE AND RESUBMIT

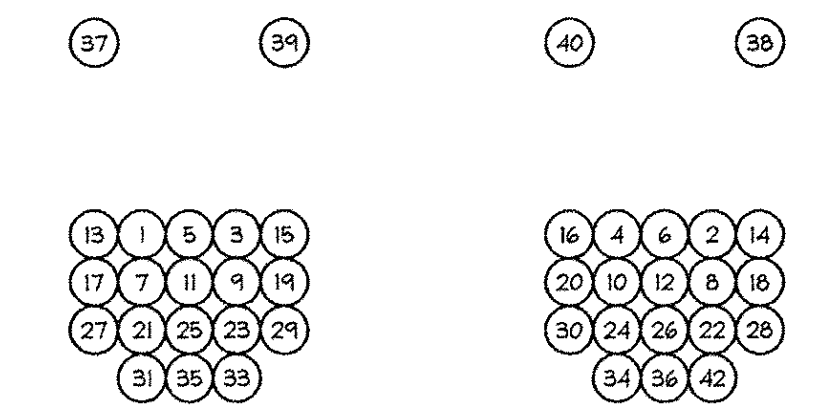
NOT REVIEWED

Date: 4-11-2014

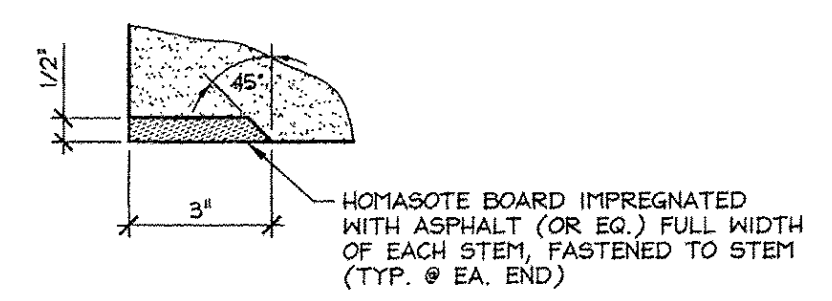
By: *James H. [Signature]*

This review by Stantec Consulting Services Inc. is for the sole purpose of ascertaining conformance with the general design concept. This review shall not mean that Stantec Consulting Services Inc. approves the detail design inherent in the shop drawings, responsibility for which shall remain with the Contractor. Submitting same, and such review shall not relieve the Contractor of his responsibility for errors or omissions in the shop drawing or of his responsibility for meeting all requirements of the Contract Documents. The contractor is responsible for dimensions to be confirmed and correlated at the job site, for information that pertains solely to the fabrication process or to techniques of construction and installation and for coordination of the work of all subtrades.

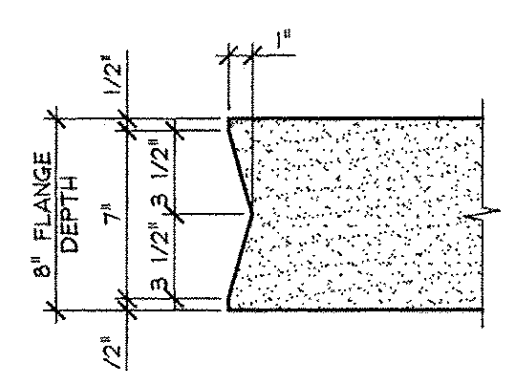
- PRESTRESSING NOTATIONS**
- ✦ DENOTES STRAIGHT STRANDS TO BE CUT FLUSH WITH EA. END OF EA. STEM
  - ✦ DENOTES STRAIGHT STRANDS TO PROJECT 1'-6" FROM EA. END OF EA. STEM
  - ⊕ DENOTES STRAIGHT STRANDS TO BE DEBONDED 6" FROM EA. END OF EA. STEM
  - ⊕ DENOTES STRAIGHT STRANDS TO BE DEBONDED 2'-0" FROM EA. END OF EA. STEM
  - ⊕ DENOTES STRAIGHT STRANDS TO BE DEBONDED 6'-0" FROM EA. END OF EA. STEM
  - ⊕ DENOTES STRAIGHT STRANDS TO BE DEBONDED 8'-0" FROM EA. END OF EA. STEM



**G** DETENSIONING SCHEDULE  
N.T.S.



**F** HOMASOTE DETAIL  
NBI 3" = 1'-0"



**G** SHEAR KEY DETAIL  
NBI 1 1/2" = 1'-0"

ISSUED FOR PRODUCTION  
APR 09 2014  
J.P. CARRARA & SONS, INC.  
MIDDLEBURY, VT 05753

APPROVAL STAMP:	J.P. CARRARA & SONS INC. Precast & Prestress Manufacturer 2464 CASE ST., MIDDLEBURY, VERMONT 05753 Phone: (802)388-6361 Fax: (802)388-9010	A.L. St. ONGE CONTRACTOR, INC. CONTRACTOR MONTGOMERY CENTER, VERMONT
STATE OF VERMONT AGENCY OF TRANSPORTATION COUNTY OF FRANKLIN	DATE: JAN. 27, 2014	SCALE: NOTED
TOWN OF ENOSBURG BOSTON POST ROAD T.H.2 CLASS 2 BRIDGE NO.: 48 PROJECT NO.: BRO 1448(40)	CHKD: M.W. DFTM: B.L.	JOB NO: 23418-013
<b>PRESTRESSED NEXT BEAM DETAILS</b>	DWG. NO: <b>NBI</b>	