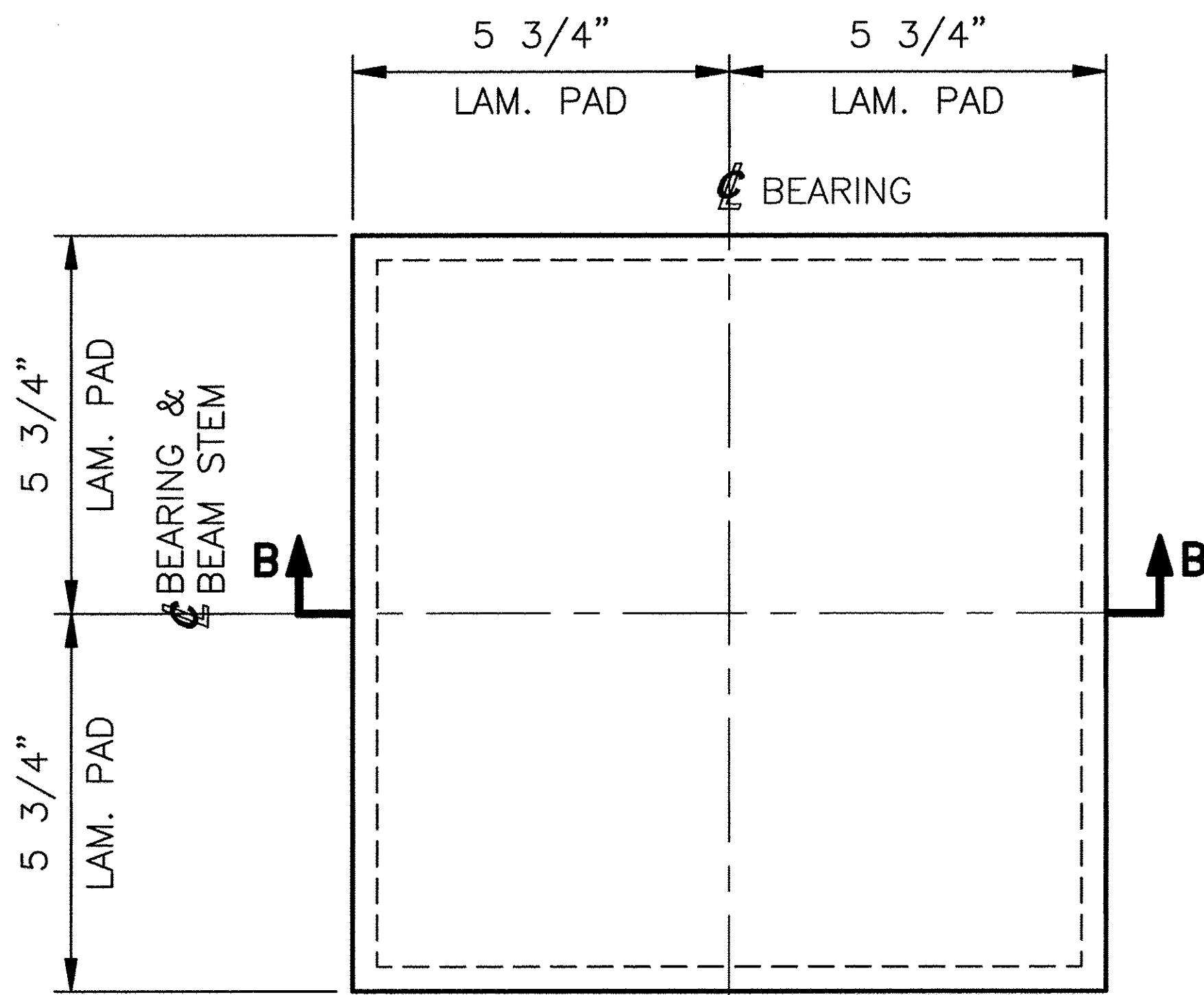
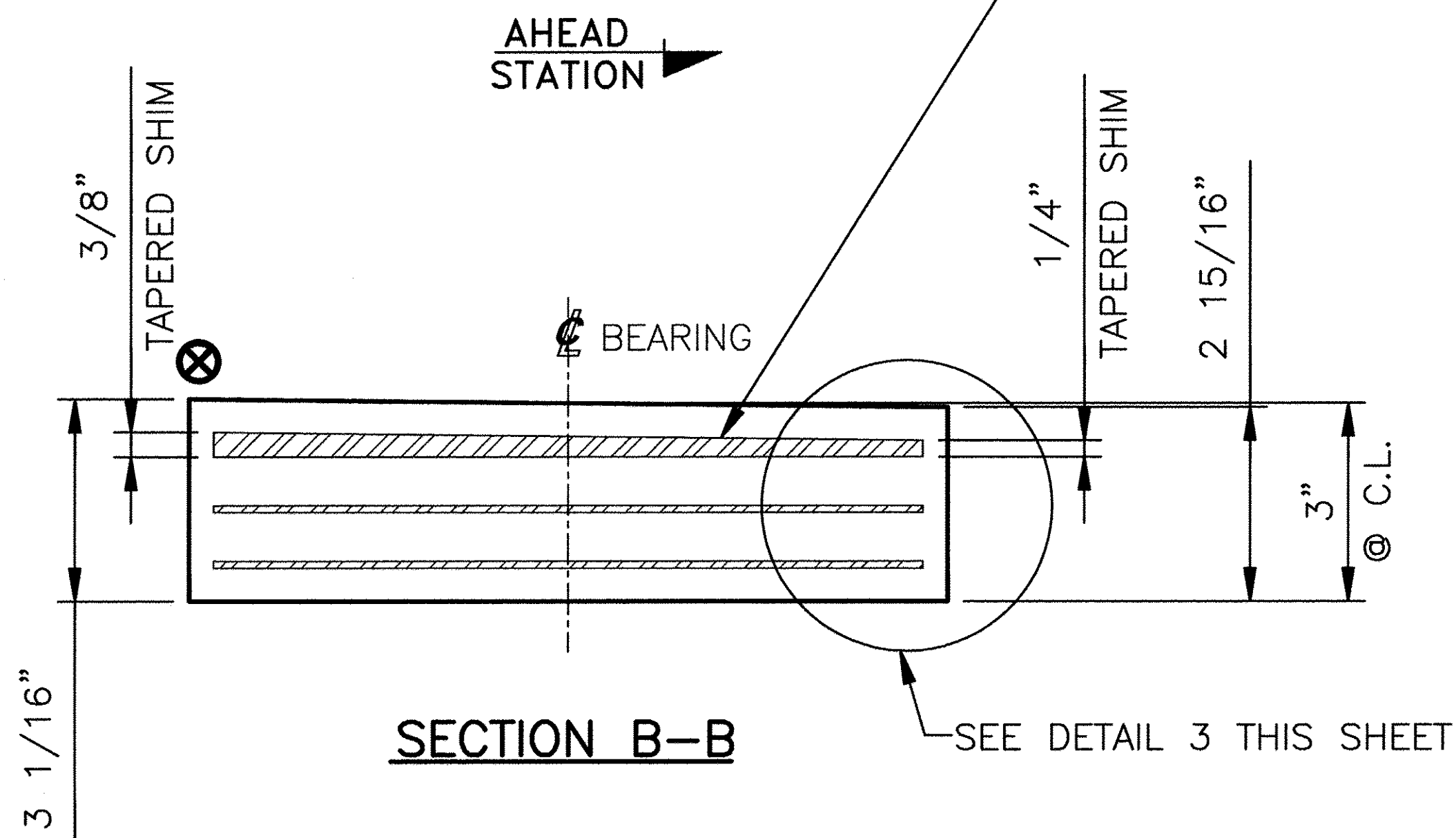


APPROVED: Approval of drawings and/or procedures indicates concurrence with the information presented and does not relieve the Contractor or Fabricator of compliance with all specifications and code requirements	✓	
APPROVED AS NOTED		
REVISE AND RESUBMIT		
NOT REVIEWED		
Date:	5/29/2014	
By:		
This review by Stantec Consulting Services Inc. is for the sole purpose of ascertaining conformance with the general design concept. This review shall not mean that Stantec Consulting Services Inc approves the detail design inherent in the shop drawings, responsibility for which shall remain with the Contractor. Submitting same, and such review shall not relieve the Contractor of his responsibility for errors or omissions in the shop drawing or of his responsibility for meeting all requirements of the Contract Documents. The contractor is responsible for dimensions to be confirmed and correlated at the job site, for information that pertains solely to the fabrication processes or to techniques of construction and installation and for coordination of the work of all subtrades.		



PLAN VIEW

BEVELED SHIM PLATE
5/16" @ C.L. X 10 3/4" X 10 3/4"
SEE DETAIL 4 THIS SHEET



SECTION B-B

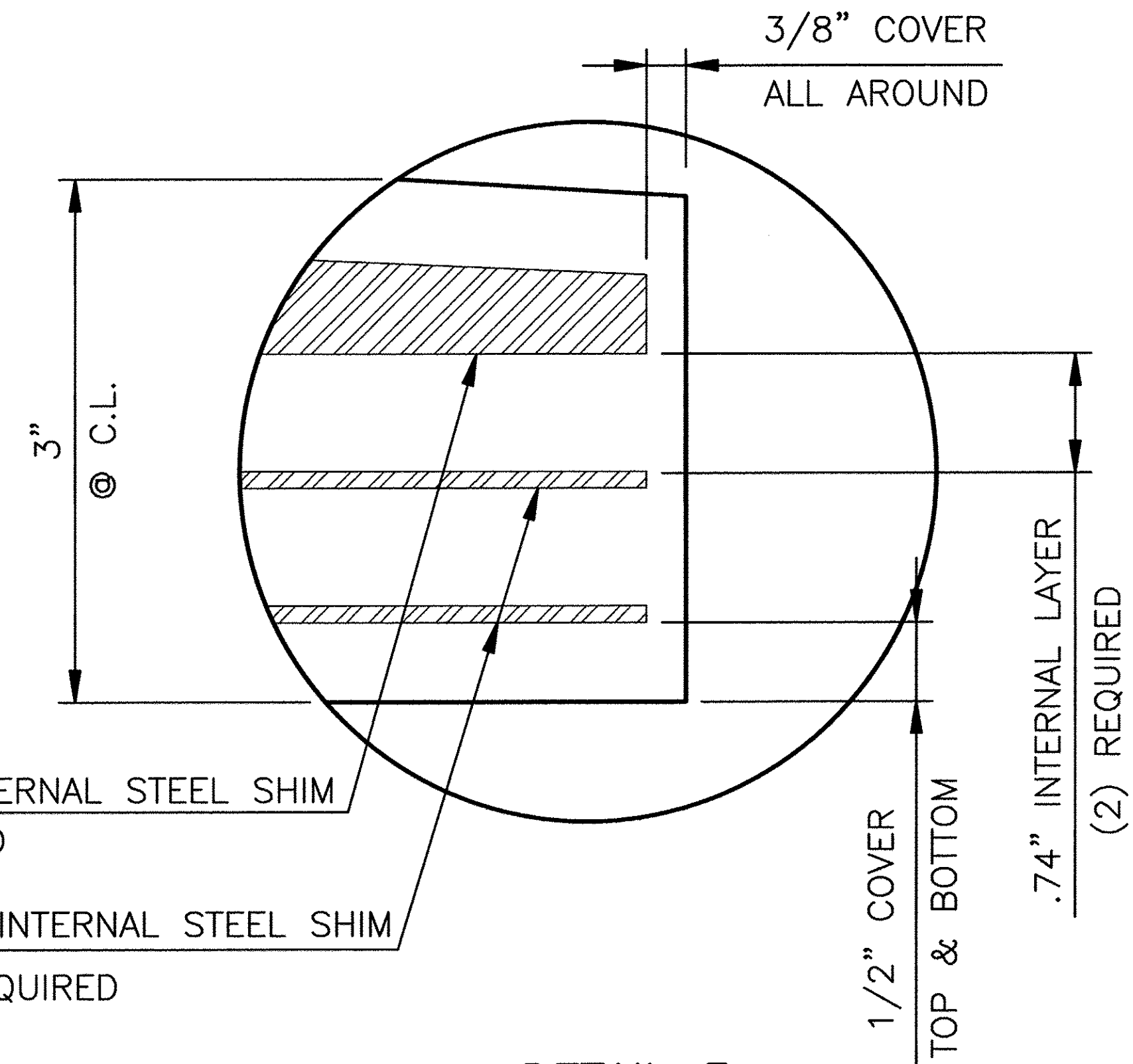
LAMINATED ELASTOMERIC BEARING PAD

LEP2

(6) REQUIRED ABUTMENT 2

Vermont Agency of Transportation
RECEIVED
ON: **May 28, 2014**
and Checked for
CONFORMANCE
BY: Rob Young DATE: 05/29/2014

1/4" - 5/8" TAPERED INTERNAL STEEL SHIM
(1) REQUIRED
12 GA. (.1046" NOM.) INTERNAL STEEL SHIM
(2) REQUIRED



DETAIL 3
LEP2

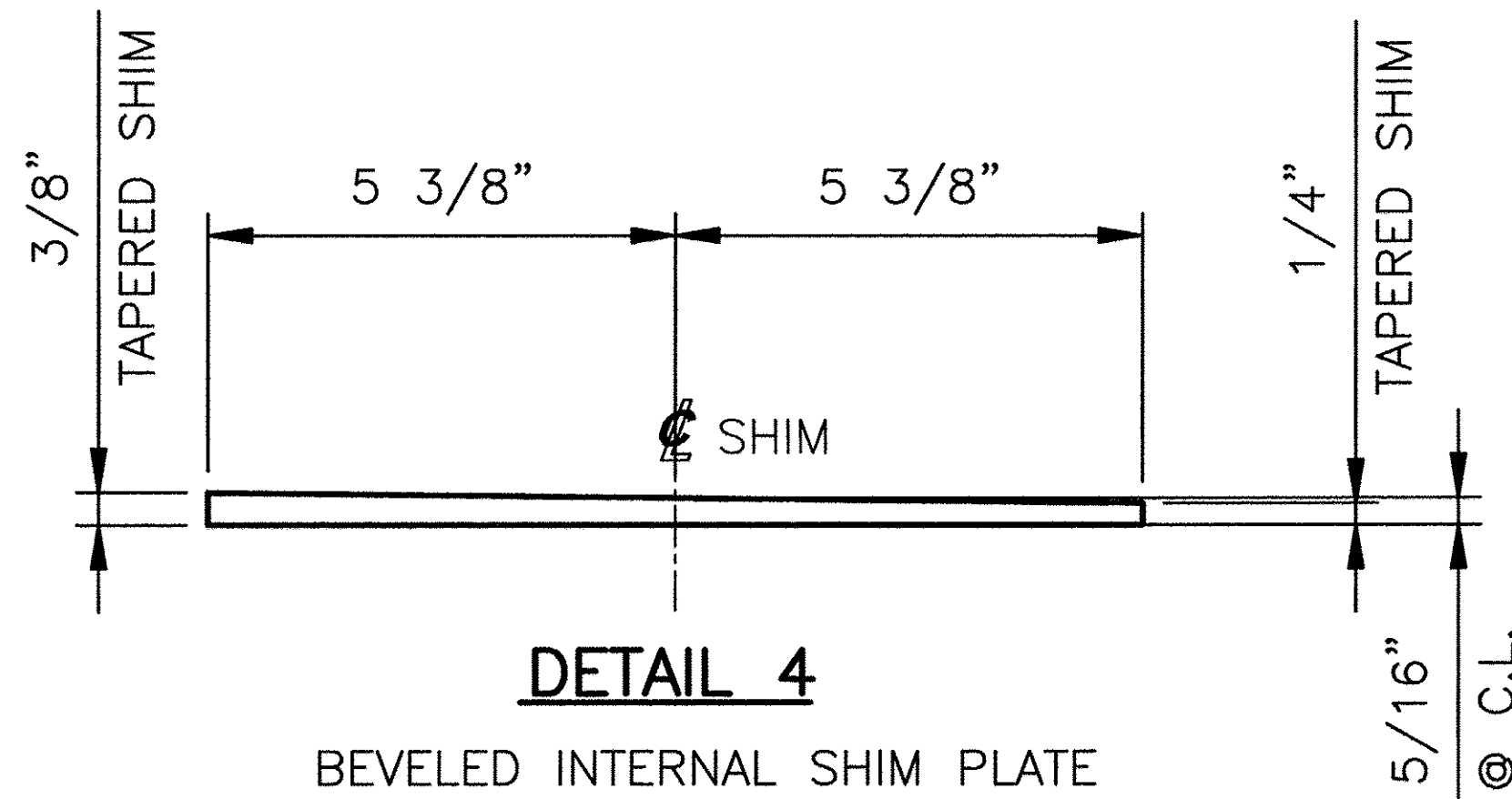
BEVELED LAMINATED BEARING PAD
3" @ C.L. X 11 1/2" X 11 1/2" LAMINATED PAD
WITH A SHEAR MODULUS OF 152 PSI +/-15%
60 DUROMETER GR. 4 NATURAL RUBBER
(6) REQUIRED AT ABUTMENT 2

TEST2

BEVELED LAMINATED BEARING PAD
3" @ C.L. X 11 1/2" X 11 1/2" LAMINATED PAD
WITH A SHEAR MODULUS OF 152 PSI +/-15%
60 DUROMETER GR. 4 NATURAL RUBBER
(2) REQUIRED FOR TESTING

MAX. DESIGN LOAD

DEAD LOAD = 35.8 kips
LIVE LOAD = 38.8 kips



DETAIL 4

BEVELED INTERNAL SHIM PLATE
5/16" @ C.L. X 10 3/4" X 10 3/4"
AASHTO M270M/M270 GR. 36
(6) REQUIRED AT ABUTMENT 2

SEE SHEET GN1 FOR SHOP NOTES

STATE OF VERMONT AGENCY OF TRANSPORTATION TOWN OF ENOSBURG BOSTON POST ROAD T.H. 2 CLASS 2, BRIDGE NO: 48		
STATE	COUNTY	CONTROL NO.
VT	FRANKLIN	N/A
PROJ. NO.: BRO 1448 (40)		
DYNAMIC RUBBER: LAMINATED BEARING PADS		
1501 ROCKY RIDGE ROAD P.O. BOX 2159 ATHENS, TEXAS 75751		
SCALE: NONE	DRAWN BY: CV DATE: 3/7/14	CHECKED BY: ELS DATE: 3/11/14
SHEET 2 OF 3		JOB NO.: 12341
CUSTOMER: A.L. ST. ONGE CONTRACTOR INC.	DRAWING NUMBER 12341-D2	REV. 1

REVISIONS	REVISIONS	REVISIONS	REVISIONS	REVISIONS
REV.	DESCRIPTION	BY	DATE	CK'D DATE
1	REVISED ELASTOMER FROM NEOPRENE TO NATURAL RUBBER PER RFI	JG	5/27/14	SL 5/27/14