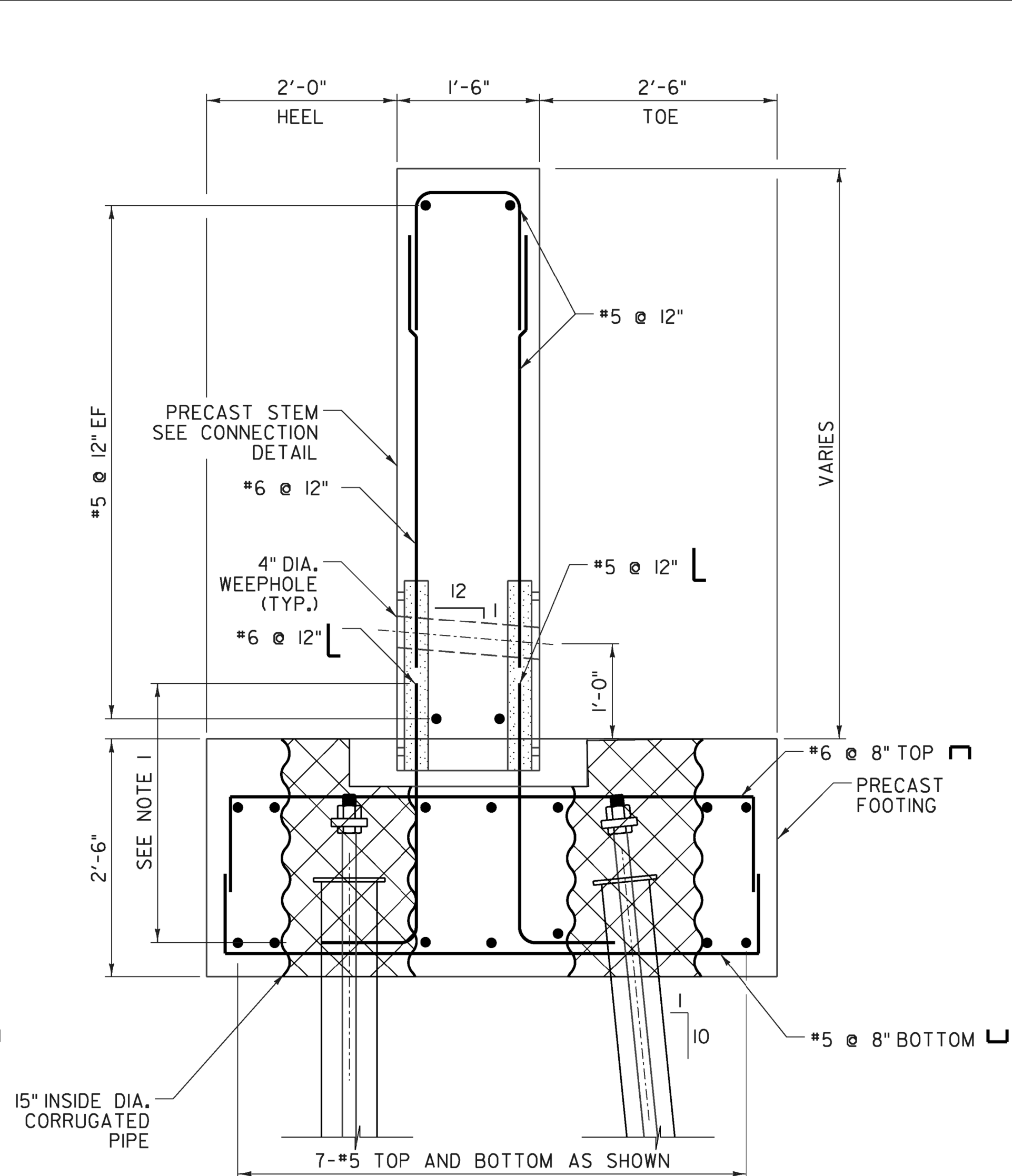
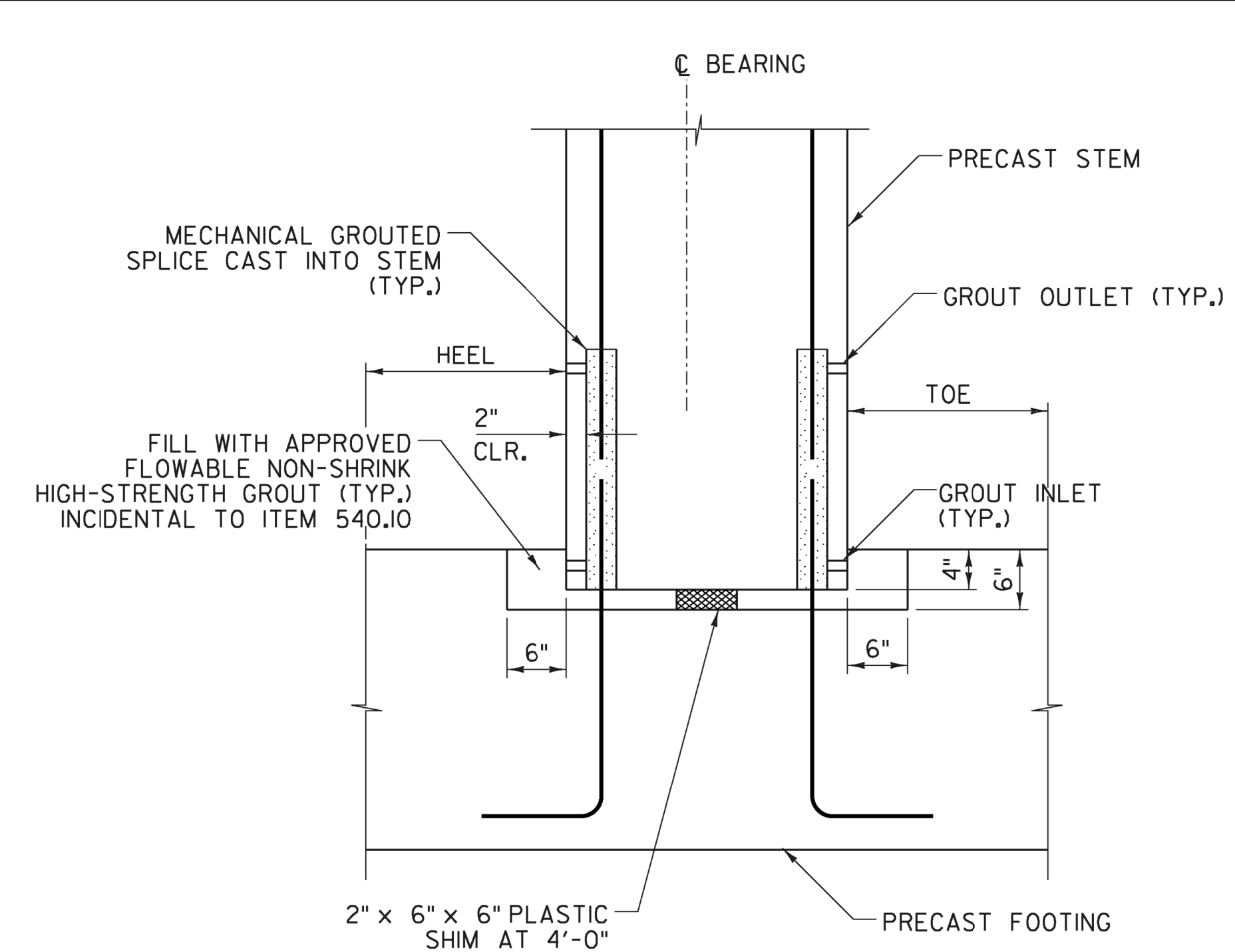


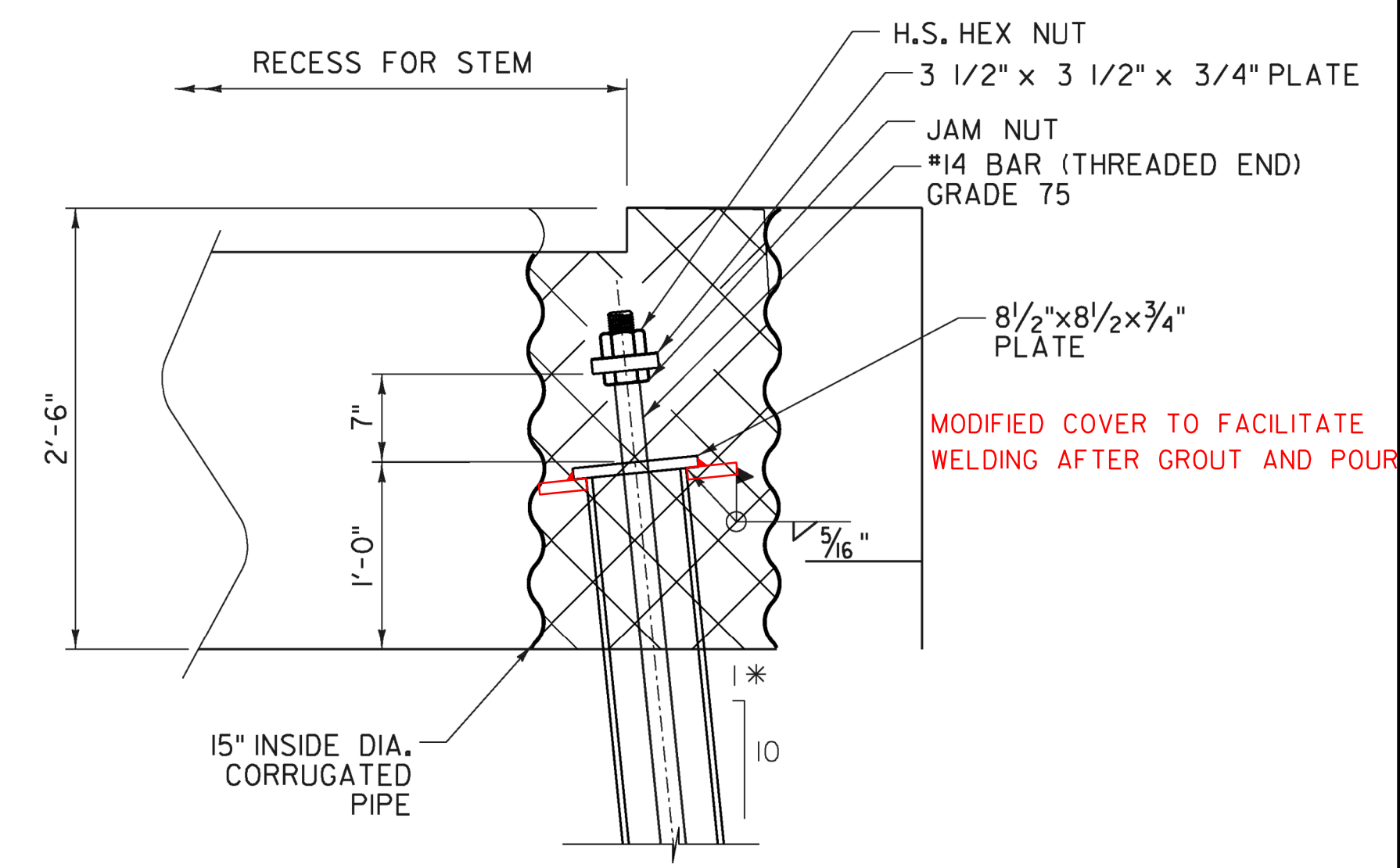
SECTION B-B
SCALE 1" = 1' - 0"



SECTION C-C
SCALE 1" = 1' - 0"

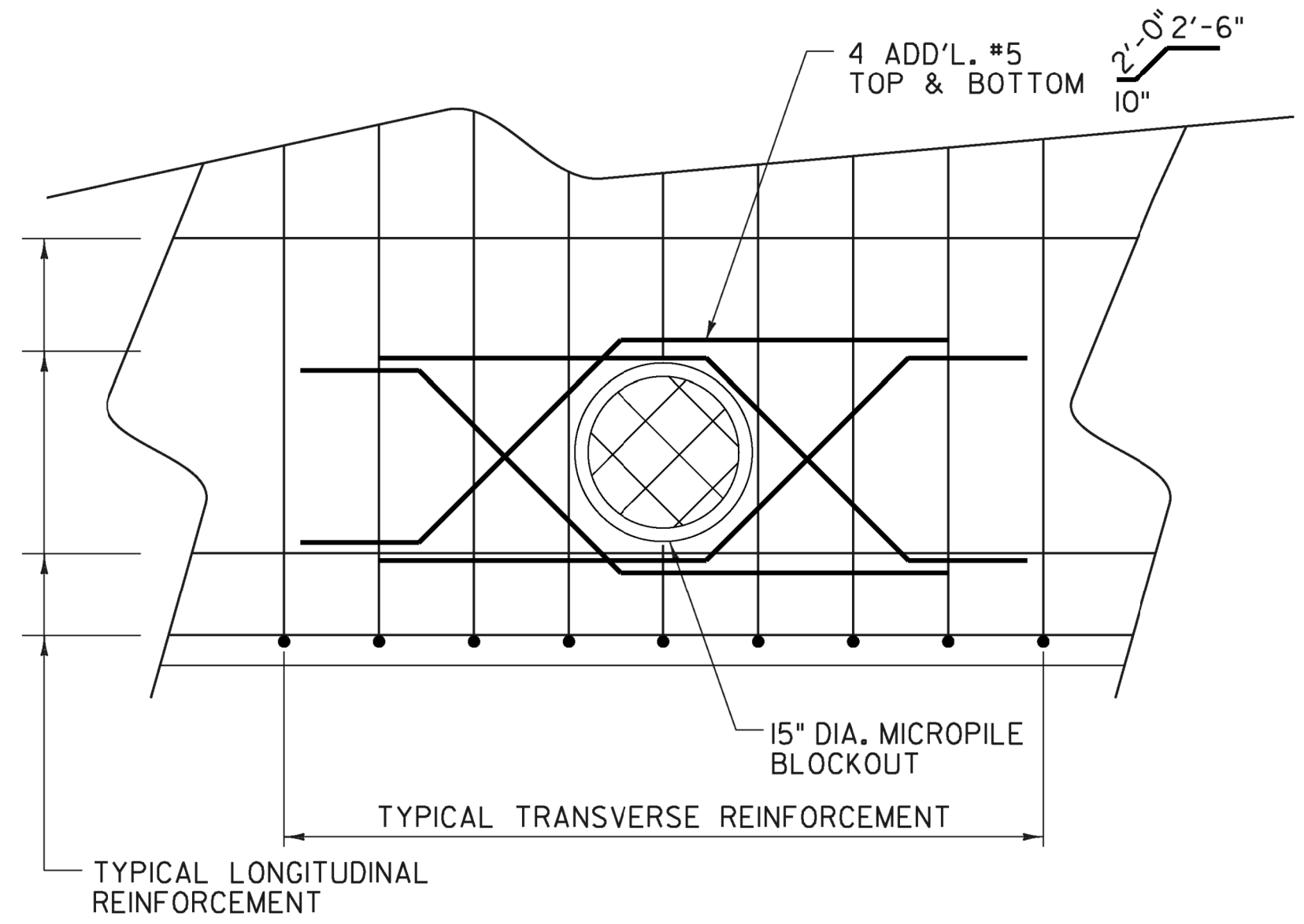


CONNECTION DETAIL
SCALE 1" = 1' - 0"



PILE CAP DETAIL
NOT TO SCALE

- NOTES:
- LEG LENGTH SHALL MEET THE REQUIREMENTS OF THE MECHANICAL CONNECTOR.
 - THE CONNECTION FROM THE PRECAST STEM TO THE FOOTING SHALL BE INCLUDED IN THE FABRICATION DRAWINGS. THE MECHANICAL GROUTED CONNECTION SHALL MEET THE REQUIREMENTS OF ASTM 1034 AND SHALL HAVE A YIELD STRENGTH OF 125% OF THE REINFORCING STEEL YIELD STRENGTH.



ADDITIONAL REINFORCEMENT AT
MICROPILE BLOCKOUT
NOT TO SCALE

* FRONT PILES ONLY; REAR PILES ARE VERTICAL

SPECIAL PROVISION (HIGH PERFORMANCE CONCRETE, RAPID SET)(FPO).

NOTE:
FOR LOCATION OF SECTIONS B-B AND C-C REFER TO SHEETS 28 & 29.

PROJECT NAME:	ENOSBURG	PLOT DATE:	10/4/2013
PROJECT NUMBER:	BRO 1448(40)	DRAWN BY:	L. BUXTON
FILE NAME:	...XX Abut_sect.det.dgn	DESIGNED BY:	T. KNIGHT
PROJECT LEADER:	G. BOGUE	CHECKED BY:	T. KNIGHT
ABUTMENT SECTIONS & DETAILS		SHEET 30 OF 46	

